

# **canadair challenger**

## **GSE TECHNICAL MANUAL**

**KIT – NOSE WHEEL STEERING SCALE AND POINTER  
G600-320015**

**CANADAIR LIMITED**

**P.O. BOX 6087, MONTREAL, QUÉBEC  
CANADA H3C 3G9**

Copyright © 1985 by Canadair Limited

All rights reserved. No part of this work  
may be reproduced or copied in any form  
or by any means without written permission  
of Canadair Limited.

**PREPARED IN ACCORDANCE WITH A.T.A. SPECIFICATION NO. 101**





GSE TECHNICAL MANUAL  
KIT - NOSE WHEEL STEERING SCALE AND POINTER  
G600-320015

LIST OF EFFECTIVE PAGES

<u>Chapter/ Section</u>	<u>Page</u>	<u>Date</u>	<u>Chapter/ Section</u>	<u>Page</u>	<u>Date</u>
Effective Pages	1	Oct 15/85			
Contents	1	Oct 15/85			
1-1	1	Oct 15/85			
1-2	1	Oct 15/85			
	2	Oct 15/85			
1-3	1	Oct 15/85			
1-4	1	Oct 15/85			
1-5	1	Oct 15/85			
4-1	1	Oct 15/85			
	2	Oct 15/85			
4-2	1	Oct 15/85			
	2	Oct 15/85			
	3	Oct 15/85			



GSE TECHNICAL MANUAL  
KIT - NOSE WHEEL STEERING SCALE AND POINTER  
G600-320015

TABLE OF CONTENTS

	<u>Chapter/ Section</u>	<u>Page</u>
<u>Chapter 1 General Information &amp; Operating Instructions</u>		
Description	1-1	1
General		1
Equipment Description		1
Operation	1-2	1
General		1
Installation and Adjustment		1
Specifications and Capabilities	1-3	1
Dimensions		1
Weight		1
Shipping	1-4	1
General		1
Storage	1-5	1
General		1
 <u>Chapter 2 Maintenance</u>		
Not Required		
 <u>Chapter 3 Overhaul</u>		
Not Required		
 <u>Chapter 4 Illustrated Parts List</u>		
General	4-1	1
Introduction		1
Manufacturers' Code Names and Addresses		2
Detailed Parts List	4-2	1
Detailed Parts List		3
 <u>Chapter 5 Manufacturers' Appendices</u>		
Not Required		





KIT - NOSE WHEEL STEERING SCALE AND POINTER  
G600-320015

CHAPTER 1

GENERAL INFORMATION AND OPERATING INSTRUCTIONS

SECTION 1 - DESCRIPTION

1. General

Kit - Nose Wheel Steering Scale and Pointer, G600-320015, is used on Challenger CL-600 and CL-601 aircraft for indicating the Nose Wheel turning angle and is used in the following tests:

- Functional test of steering system,
- Rigging of steering system,
- Adjustment of nose wheel limit switch.

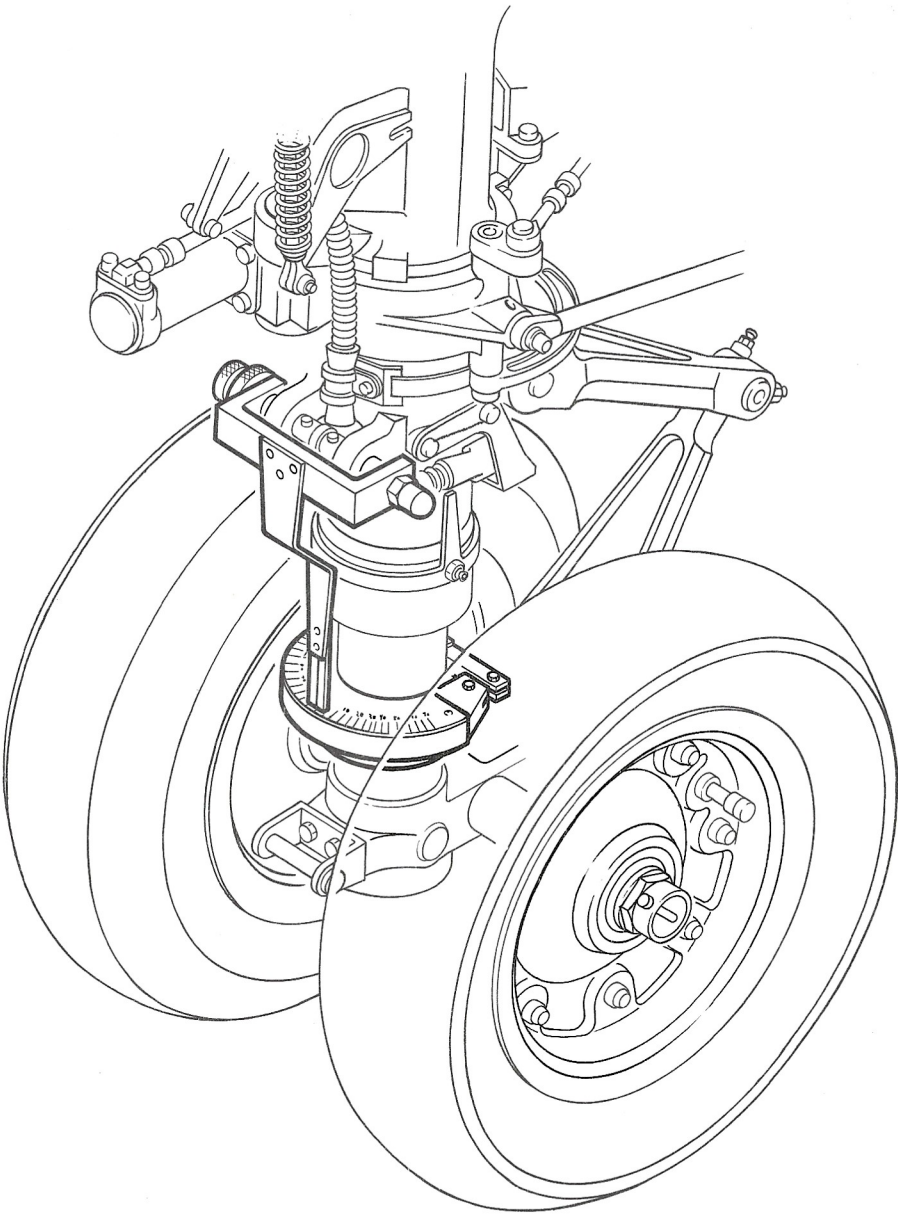
NOTE: The nose wheel steering scale and pointer kit is available in two configurations: the -1 and the -91. The -91 configuration is used with BWB aircraft only (Federal Republic of Germany).

2. Equipment Description (refer to 4-2, Figure 1)

The nose wheel steering scale and pointer kit consists of a foam-lined metal carrying case containing a pointer assembly and a protractor assembly. The protractor scale is engraved, by degree, to 70 degrees each side of zero.

**canadair  
challenger**

GSE TECHNICAL MANUAL  
KIT - NOSE WHEEL STEERING SCALE AND POINTER  
G600-320015





GSE TECHNICAL MANUAL  
KIT - NOSE WHEEL STEERING SCALE AND POINTER  
G600-320015

SECTION 3 - SPECIFICATIONS AND CAPABILITIES

1. Dimensions

Length	18 in.	(45.7 cm)
Width	13 in.	(33.0 cm)
Height	6 in.	(15.2 cm)

2. Weight

Gross weight	7.37 lb	(3.3 kg)
--------------	---------	----------



*canadair*  
*challenger*

GSE TECHNICAL MANUAL  
KIT - NOSE WHEEL STEERING SCALE AND POINTER  
G600-320015

SECTION 4 - SHIPPING

1. General

The nose wheel steering scale and pointer kit should be packed in a strong, well-reinforced container.





*canadair*  
*challenger*

GSE TECHNICAL MANUAL  
KIT - NOSE WHEEL STEERING SCALE AND POINTER  
G600-320015

SECTION 5 - STORAGE

1. General

The nose wheel steering scale and pointer kit should be stored in a dry, dust-free environment.





GSE TECHNICAL MANUAL  
KIT - NOSE WHEEL STEERING SCALE AND POINTER  
G600-320015

CHAPTER 4

ILLUSTRATED PARTS LIST

SECTION 1 - GENERAL

1. Introduction

The Illustrated Parts List describes and illustrates the assemblies, the subassemblies and the detail parts of the KIT - NOSE WHEEL STEERING SCALE AND POINTER, G600-320015, manufactured by Canadair Limited, Montreal, Canada H3C 3G9 (V88308).

The Detailed Parts List provides breakdowns in disassembly order of detail parts.

The Detailed Parts List includes chapter, unit, figure and item numbers; part numbers, nomenclature, additional description when necessary, manufacturers' codes and units per assembly.

The item number shown in the Detailed Parts List corresponds to the item number appearing on the exploded view illustration.

To find a part number when the part number is unknown, locate the part on the illustration and note the item number. Locate the item number in the Detailed Parts List. The part number will be shown on the same line. Item numbers preceded by a dash (-) in the Detailed Parts List are not illustrated.

Numbers listed in the part number column are the numbers under which the parts are manufactured and by which the parts are identified by the manufacturers. Model numbers, catalogue numbers and specification control numbers are not listed in the column; these numbers when significant are included in the nomenclature column.

Nomenclature includes description and descriptive information to adequately define an item. Entries are indented to indicate next higher assembly relationships. The next higher assembly may be obtained by referring to the first indention above and to the left of the item.

All abbreviations used in the nomenclature column are in accordance with MIL-STD-12.

Vendor code numbers are used in the nomenclature column of the Detailed Parts List to identify the manufacturer of a part that is purchased by the contractor manufacturing the equipment. Five-digit manufacturers' codes are preceded by the letter "V". The manufacturers' codes are those listed in the Federal Handbook H4-1. A complete list of the manufacturers' codes used in the Detailed Parts List is listed in paragraph 2.

GSE TECHNICAL MANUAL  
KIT - NOSE WHEEL STEERING SCALE AND POINTER  
G600-320015

Requirements shown in the Unit per Assembly column are per installation or assembly. Installations being non-procurable carry the letters "NP". Items with varying requirements are designated by the letters "AR" (as required). "RF" listed in the units per assembly column indicates that the item is listed as a reference and the requirement is listed in another figure of the Detailed Parts List.

2. Manufacturers' Codes Names and Addresses

Name and Addresses

19178  
ZERO MFG CO.  
288 MAIN ST., MONSON  
MA USA 01057

99862  
CARR LANE MFG CO.  
4200 KRAUSE COURT, ST. LOUIS  
MO USA 63119

**canadair**  
**challenger**

GSE TECHNICAL MANUAL  
KIT - NOSE WHEEL STEERING SCALE AND POINTER  
G600-320015

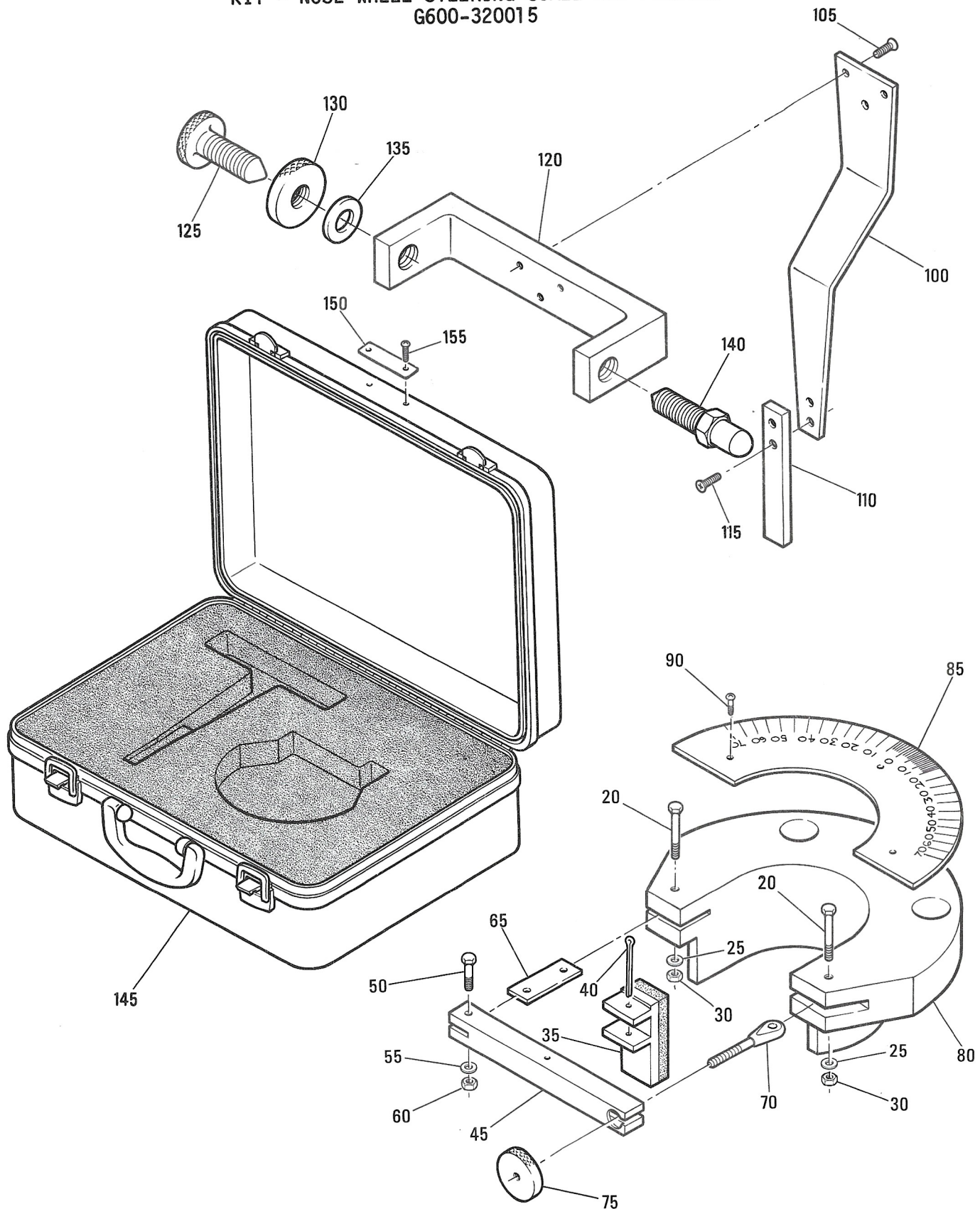
SECTION 2 - DETAILED PARTS LIST

THIS PAGE INTENTIONALLY LEFT BLANK



# canadair challenger

## GSE TECHNICAL MANUAL KIT - NOSE WHEEL STEERING SCALE AND POINTER G600-320015



Kit - Nose Wheel Steering Scale and Pointer  
Figure 1

**KIT - NOSE WHEEL STEERING SCALE AND POINTER  
G600-320015**

FIGURE AND INDEX NUMBER	PART NUMBER	1 2 3 4 5 6 7	NOMENCLATURE	EFFECTIVITY	UNITS PER ASSY
1	-1	G600-320015-1	SCALE AND POINTER - NOSE WHEEL STEERING	B	NP
	-5	G600-320015-91	SCALE AND POINTER - NOSE WHEEL STEERING	A	NP
	-10	G600-320015-3	.PROTRACTOR ASSY		1
	-15	G600-320015-7	..CLAMP ASSY		1
	20	NAS6203-14	ATTACHING PARTS		1
	25	AN960-10L	..SCREW		2
	30	MS21044N3	..WASHER		2
	35	G600-320015-9	..NUT ***		2
	40	MS24665-287	...CLAMP ASSY - SHOE ATTACHING PARTS		1
	45	G600-320015-15	...COTTER PIN ***		1
	50	NAS6203-9	...BAR ATTACHING PARTS		1
	55	AN960-10L	...SCREW		1
	60	MS21044N3	...WASHER		1
	65	G600-320015-17	...NUT ***		1
	70	G600-320015-23	...HINGE		1
	75	G600-320015-25	..EYE-BOLT		1
	80	G600-320015-11	..NUT		1
	85	G600-320015-13	..SUPPORT - PROTRACTOR		1
	90	MS35206-228	..PLATE - PROTRACTOR ATTACHING PARTS		1
	-95	G600-320015-5	..SCREW ***		3
	100	G600-320015-27	.POINTER ASSY ..POINTER		1
	105	MS24693S49	ATTACHING PARTS ..SCREW ***		1
	110	G600-320015-37	..TIP - POINTER ATTACHING PARTS		1
	115	MS24693S4	..SCREW ***		2
	120	G600-320015-29	..CROSSBAR		1
	125	G600-320015-31	..PIN		1
	130	G600-320015-33	..NUT		1
	135	AN960C816	..WASHER		1
	140	CL-LB4	..PIN - (V99862)		1
	145	103X	.CASE - CARRYING (V19178)		1
	150	S5457	.NAME PLATE ATTACHING PARTS		1
	155	MS51861-1C	..SCREW ***		2

A: APPLICABLE TO BWB  
B: NOT APPLICABLE TO BWB