



OPERATION & SERVICE MANUAL

**Model: 01-1237-0000
Sikorsky S-65
Custom Towbar**

05/2002 – Rev. 01

**For Spare Parts, Operations & Service Manuals or Service Needs
Scan the QR code or visit Tronair.com/aftermarket**



REVISION
01

DATE
05/2002

TEXT AFFECTED
Original release

TABLE OF CONTENTS

	<u>PAGE</u>
1.0 PRODUCT INFORMATION	4
1.1 DESCRIPTION.....	4
1.2 MODEL & SERIAL NUMBER.....	4
1.3 MANUFACTURER	4
2.0 PROVISION OF SPARES.....	4
2.1 SOURCE OF SPARE PARTS.....	4
2.2 RECOMMENDED SPARE PARTS LISTS	4
3.0 GUARANTEES/LIMITATION OF LIABILITY	4

This product can not be modified without the written approval of Tronair, Inc. Any modifications done without written approval voids all warranties and releases Tronair, Inc., its suppliers, distributors, employees, or financial institutions from any liability from consequences that may occur. Only Tronair OEM replacement parts shall be used.

1.0 PRODUCT INFORMATION

1.1 DESCRIPTION

Sikorsky Custom Towbar

1.2 MODEL & SERIAL NUMBER

Reference nameplate on unit

1.3 MANUFACTURER

TRONAIR, Inc.
1 Air Cargo Pkwy East
Swanton, Ohio 43558 USA

Telephone: (419) 866-6301 or 800-426-6301
Fax: (419) 867-0634
E-mail: sales@tronair.com
Website: www.tronair.com

2.0 PROVISION OF SPARES

2.1 SOURCE OF SPARE PARTS

Spare parts may be obtained from the manufacturer:

TRONAIR, Inc.
1 Air Cargo Pkwy East
Swanton, Ohio 43558 USA

Telephone: (419) 866-6301 or 800-426-6301
Fax: (419) 867-0634
E-mail: sales@tronair.com
Website: www.tronair.com

For Spare Parts, Operations & Service Manuals or Service Needs:
Scan the QR code or visit Tronair.com/aftermarket



2.2 RECOMMENDED SPARE PARTS LISTS

Reference the following page(s) for Replacement Parts and Kits available.

Recommended Spares to be kept on hand:

K-1114.....Kit, Caster Replacement
K-1736.....Kit, Wheel Replacement

3.0 GUARANTEES/LIMITATION OF LIABILITY

Tronair products are warranted to be free of manufacturing or material defects for a period of one year after shipment to the original customer. This is solely limited to the repair or replacement of defective components. This warranty does not cover the following items:

- a) Parts required for normal maintenance
- b) Parts covered by a component manufacturers warranty
- c) Replacement parts have a 90-day warranty from date of shipment

If you have a problem that may require service, contact Tronair immediately. Do not attempt to repair or disassemble a product without first contacting Tronair, any action may affect warranty coverage. When you contact Tronair be prepared to provide the following information:

- a) Product Model Number
- b) Product Serial Number
- c) Description of the problem

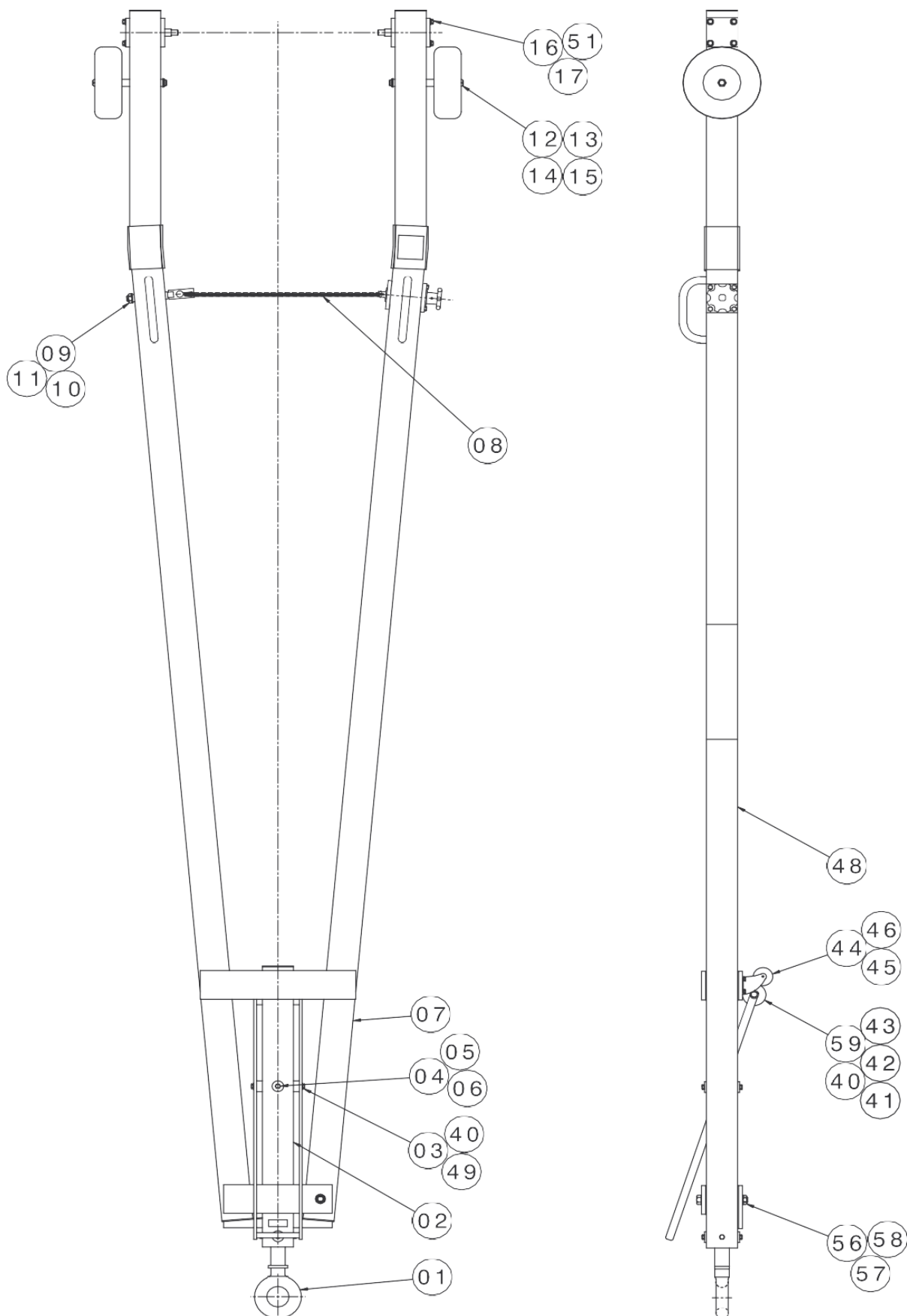
If warranty coverage is approved, either replacement parts will be sent or the product will have to be returned to Tronair for repairs. If the product is to be returned, a Return Material Authorization (RMA) number will be issued for reference purposes on any shipping documents. Failure to obtain a RMA in advance of returning an item will result in a service fee. A decision on the extent of warranty coverage on returned products is reserved pending inspection at Tronair. Any shipments to Tronair must be shipped freight prepaid. Freight costs on shipments to customers will be paid by Tronair on any warranty claims only. Any unauthorized modification of the Tronair products or use of the Tronair products in violation of cautions and warnings in any manual (including updates) or safety bulletins published or delivered by Tronair will immediately void any warranty, express or implied.

The obligations of Tronair expressly stated herein are in lieu of all other warranties or conditions expressed or implied. **Any unauthorized modification of the Tronair products or use of the Tronair products in violations of cautions and warnings in any manual (including updates) or safety bulletins published or delivered by Tronair will immediately void any warranty, express or implied and Tronair disclaims any and all liability for injury (WITHOUT LIMITATION and including DEATH), loss or damage arising from or relating to such misuse.**

This page left blank intentionally.

Parts List

When ordering replacement parts/kits, please specify model, serial number and color of your unit.



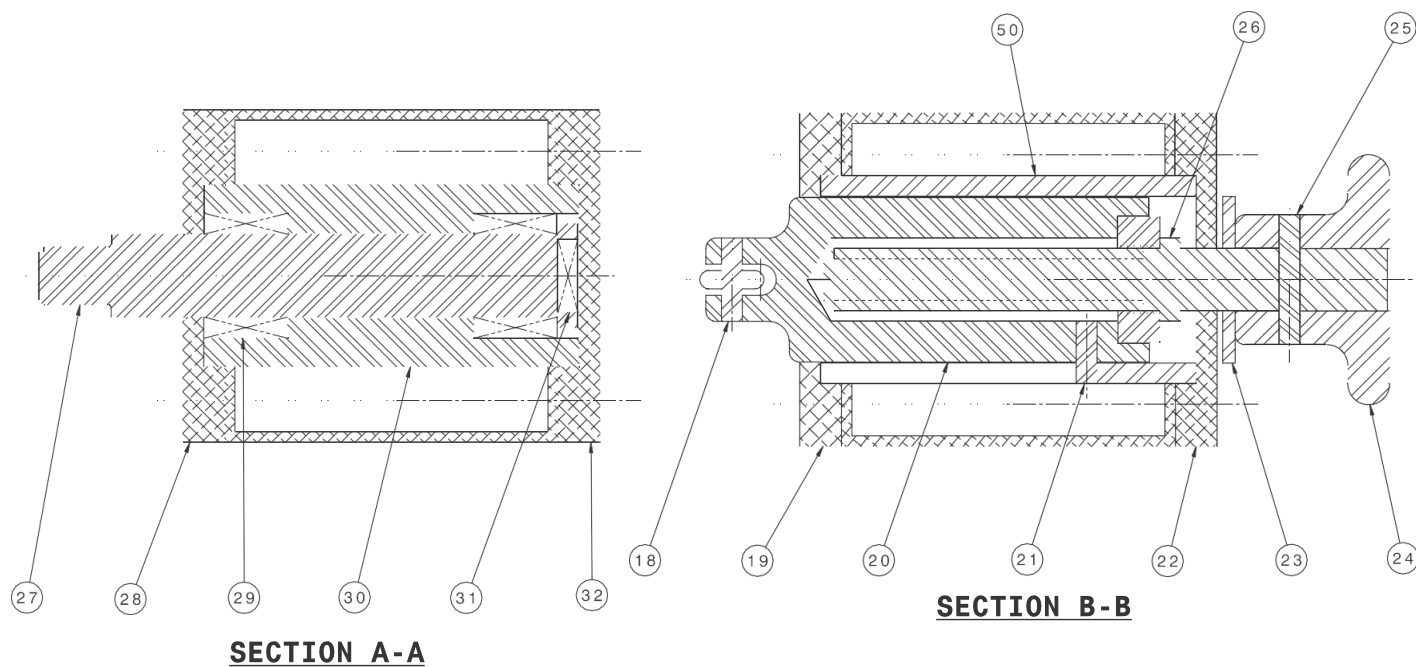
Parts List

When ordering replacement parts/kits, please specify model, serial number and color of your unit.

Item	Part Number	Description	Qty
1	Z-2927	Assembly, Shock	1
2	Z-2930-01	Weldment, Lever Arm	1
3	G-1100-109016	Bolt, Hex Head, Grade 5, 1/2-13 x 1-3/4" long	2
4	R-1502-01	Spacer	6
5	G-1251-1090R	Lockwasher, 1/2 Regular	6
6	G-1100-109012	Bolt, Hex Head, Grade 5, 1/2-13 x 1-1/4" long	6
7	Z-2934-01	Weldment, Towbar	1
8	H-1980-01*29.0	Chain, 1/4 x 29" long	1
9	Z-2929	Weldment, Tightener	1
10	G-1203-1115	Jamnut 3/4-16 Elastic	2
11	G-1255-11	Flatwasher 3/4 AN	1
12	R-1188-05	Axle	2
16	G-1116	Bolt, 3/8-16 Modified	12
17	G-1251-1070R	Lockwasher 3/8 Regular	12
25	G-1300-25140	Pin 1/4 x 1-1/2" long Roll	1
26	R-1508	Rod, Tightener	1
36	G-1100-111560	Bolt, Hex Head, Grade 5, 3/4-16 x 6" long	1
38	G-1250-1110N	Flatwasher, 3/4 Narrow	2
39	G-1100-109570	Bolt, Hex Head, Grade 5, 1/2-20 x 7" long	1
40	G-1250-1090N	Flatwasher, 1/2 Narrow	10
41	TR-1387-01	Tube, Spacer	1
42	G-1202-1095	Stopnut 1/2-20 Elastic	1
43	U-1055	Wheel	2
48	Z-2932-01	Weldment, Movable Arm	1
49	R-1503-01	Spacer	2
50	TR-1416	Tube, Guide	1
51	G-1250-1070N	Flatwasher, 3/8 Narrow	8
	K-1114	Kit, Caster Replacement; consists of:	
44	U-1000	Caster, Swivel	2
45	G-1100-105006	Bolt, Hex Head Grade 5, 1/4 - 20 x 3/4 Long	8
46	G-1251-1050R	Lockwasher, 1/4 Regular	8
N/S	G-1250-1050N	Flatwasher, 1/4 Narrow	8
	K-1736	Kit, Wheel Replacement; consists of:	
13	G-1250-1110N	Flatwasher, 3/4 Narrow	1
14	G-1203-1115	Jamnut, 3/4 - 16 Elastic	1
15	U-1027	Wheel	1

Parts List

When ordering replacement parts/kits, please specify model, serial number and color of your unit.



Item	Part Number	Description	Qty
18	G-1300-25100	Pin 1/4 x 1" long Roll	1
19	J-2238-01	Tightener, Cap	1
20	Z-2943	Tightener, Chain	1
21	G-1300-25050	Pin, 1/4 x 5/8" long Roll	1
22	J-2239-01	Tightener, Cap	1
23	G-1250-1110W	Flatwasher 3/4 Wide	1
24	H-1919	Handle	1
27	R-1504	Pin, Rotation	2
28	J-2236-01	Cap, Sleeve	2
29	H-1884	Bearing, Roller	4
30	TR-1415	Sleeve, Wear	2
31	H-1920	Bearing, Thrust	2
32	J-2237-01	Cap, Sleeve	2