

**Model: 01-1282-0010
Portable Towbar
Canadair CRJ-700**



12/2007 – Rev. 03

REVISION
03

DATE
12/2007

TEXT AFFECTED
Added CE marking and Declaration of Conformity, Modified Parts Lists

TABLE OF CONTENTS

| | <u>PAGE</u> |
|---|-------------|
| 1.0 DESCRIPTION | 1 |
| 1.1 SPECIFICATIONS | 1 |
| 1.2 FEATURES | 1 |
| 2.0 SAFETY INFORMATION..... | 2 |
| 2.1 GENERAL..... | 2 |
| 3.0 OPERATION..... | 2 |
| 3.1 PRELIMINARY CHECKLIST..... | 2 |
| 3.2 USAGE PROCEDURE..... | 2 |
| 4.0 TRAINING..... | 4 |
| 4.1 TRAINING REQUIREMENTS | 4 |
| 4.2 TRAINING PROGRAM..... | 4 |
| 4.3 OPERATOR TRAINING | 4 |
| 5.0 PROVISION OF SPARES | 4 |
| 5.1 SPARE PARTS | 4 |
| 5.2 PARTS LISTS | 4 |
| 6.0 IN-SERVICE SUPPORT | 4 |
| 7.0 GUARANTEES/LIMITATION OF LIABILITY | 4 |

Tronair towbars/heads must only be used with matching Tronair heads/towbars, and Tronair shear pins.

This product can not be modified without the written approval of Tronair, Inc. Any modifications done without written approval voids all warranties and releases Tronair, Inc., its suppliers, distributors, employees, or financial institutions from any liability from consequences that may occur. Only Tronair OEM replacement parts shall be used.

1.0 DESCRIPTION

The Tronair Model 01-1282-0010 Portable Towbar is a lightweight, carry-on towbar for the CRJ-700 manufactured by Canadair Bombardier Aerospace.

The portable towbar includes separating sections for compact storage. The aircraft attachment is by machined pins on the towing head to the nose landing gear. There is an eyebolt with shock protection at the end of the towbar for towing.

1.1 SPECIFICATIONS

Aircraft Application: Canadair Bombardier Aerospace CRJ-700

Maximum Aircraft Gross Weight: 82,775 lbs (37.5 Metric tons)

Dimensions:

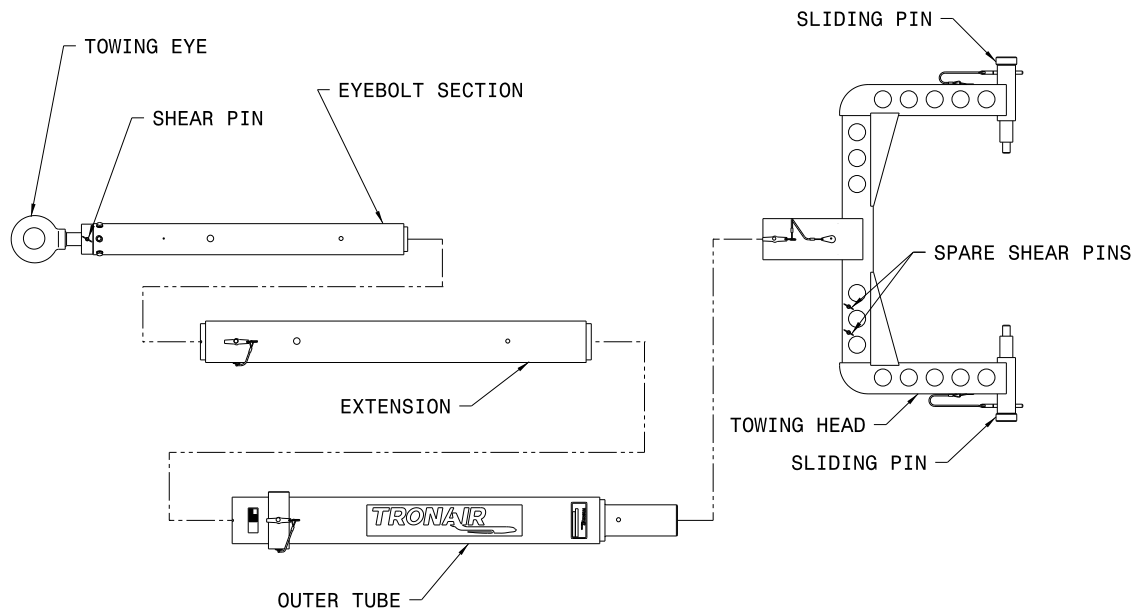
| | | |
|--------|------------------------|---|
| Length | 112.1875 in (285.0 cm) | From eyebolt centerline to aircraft attachment centerline <u>including</u> middle section |
| | 86.1875 in (218.9 cm) | From eyebolt centerline to aircraft attachment centerline without middle section |
| Width | 35.1875 in (89.4 cm) | |
| Height | 8.0625 in (20.5 cm) | |

Weight:

| | |
|-----------------|-------------------|
| Eyebolt Section | 21.5 lbs (9.8 kg) |
| Middle Section | 11.5 lbs (5.2 kg) |
| Towing Head | 22 lbs (10.0 kg) |

Finish: Blue Powder Coat

1.2 FEATURES



Model 01-1282-0010 Features

2.0 SAFETY INFORMATION

2.1 GENERAL

The Tronair Model 01-1282-0010 Portable Towbar is used for moving Canadair CRJ-700 Aircraft only.

To ensure safe operation, please read the following statements and understand their meaning. This manual contains safety precautions which are explained as follows. Please read carefully.



WARNING! Warning is used to indicate the presence of a hazard that can cause **severe personal injury, death, and/or substantial property damage** if the Warning Notice is ignored.

CAUTION! Caution is used to indicate the presence of a hazard which will or can **cause minor personal injury or property damage** if the Caution Notice is ignored.



WARNING!

A damaged or bent towbar should not be used. Towbar should be repaired or replaced.

3.0 OPERATION

3.1 PRELIMINARY CHECKLIST

3.1.1 Towbar

- Check shear pin. Ensure shear pin is not broken or missing. Replace shear pin if broken or missing.



WARNING!

Damage to the aircraft can occur when it is towed with a towbar without shear protection.

- Check lunette for bending, excessive wear and deformity.
- Check ball lok-T pins on extension, outer tube, and towing head sections. Ensure ball lok-T pin is securely attached to towbar via their lanyards. Ensure ball lok-T pins are not missing.

3.1.2 Towing Head

- Check welds between head rail and connector tube for cracks.
- Check welds between side rails and sliding pin wear sleeve for cracks.
- Check sliding pin ball lok-T pin. Ensure ball lok-T pin is securely attached to the side rail via its lanyard. Ensure ball lok-T pin is not missing.
- Check sliding pin for bending or excessive wear. Ensure sliding pin slides freely.
- Check sliding pin roll pin. Ensure roll pin is not loose or missing.

3.2 USAGE PROCEDURE

3.2.1 Aircraft Attachment



CAUTION!

It is recommended that your towbar be attached to the aircraft first, and then connected to the tug to avoid possible aircraft damage.

- Ensure the sliding pin is locked in place using the ball lok-T pin.

3.2.2 Tug Attachment



CAUTION!

Damage to the towbar or aircraft can result from an excessive towbar angle during towing operations. Reference Figure 1.

- Use a pintle height so that the towbar is as level as possible during towing. Also, the pintle hook height should prevent contact of the towbar with the ground during towing.

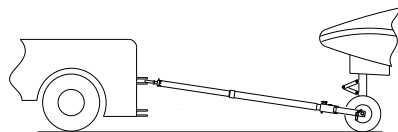


FIGURE 1 – Incorrect

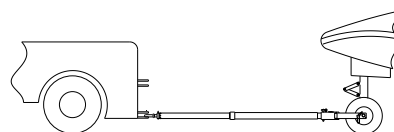


FIGURE 2 – Correct

3.2.3 Couplers



CAUTION!

Damage to the towbar or aircraft can result while towing with the following types of couplers:

- Lift Head
- Standard Duty Latch
- Vertical Side Swing Latch
- Swivel Hook

The couplers listed above are known to cause binding and failure in the eyebolt. Indicators of binding are wear on outside diameter of the eyebolt and indentation on the inside diameter of the eyebolt. **Reference Figure 3.**

Tronair recommends a telecoupler pintle hook arrangement. This arrangement is known to eliminate binding. Tronair offers a Standard Telecoupler, Model Number 01-1950-5000, for use on tugs. **Reference Figure 4.**

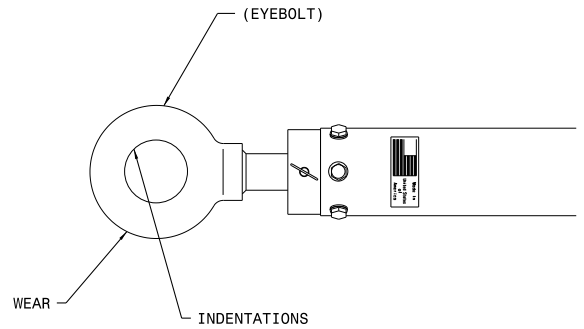


FIGURE 3

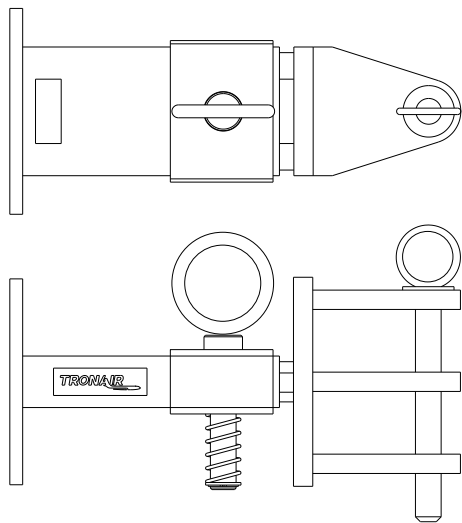


FIGURE 4
01-1950-5000 Standard Telecoupler

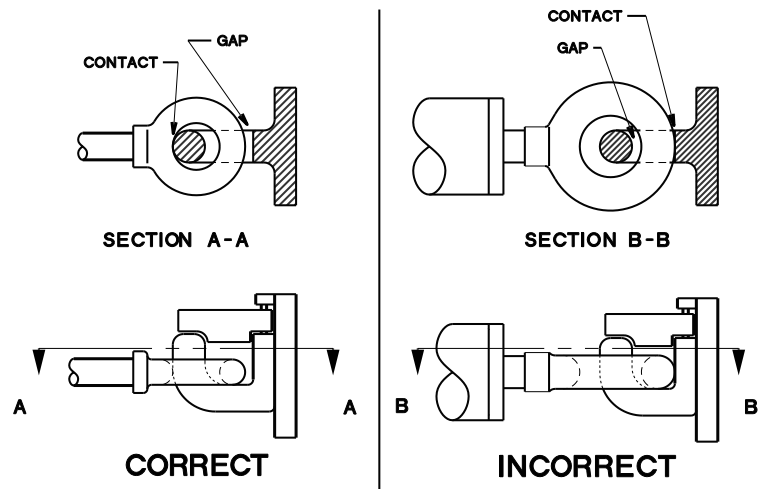


FIGURE 5

Damage to the towbar and/or aircraft can result by towing or pushing an aircraft with an incorrect size eyebolt or pintle pin. A correct size eyebolt will make contact with the pintle pin. A gap between the eyebolt outside diameter and the coupler face plate should be easily seen. An eyebolt which is too large will cause the eyebolt to make contact with the face plate of the coupler. When the eyebolt is too large for the coupler, a gap between the inside diameter of the eyebolt and the coupler face plate will be seen. **Reference Figure 5.**

To ensure proper towing and pushing, check to make sure the pintle pin diameter is not too long for the eyebolt's inside diameter. An approximate one-half inch (1/2") gap between the pin diameter and the eyebolt should be seen. If any of these conditions are not met, please contact Tronair for information to obtain a new coupler.

3.2.4 Towing Operation

Damage to the towbar or aircraft can result from pushing an aircraft while maintaining too sharp of an angle between the tug and the aircraft. Contact between the towbar weldment and the tug must be avoided. It is recommended that the angle between the tug and towbar not exceed 90°. **Reference Figure 6.**

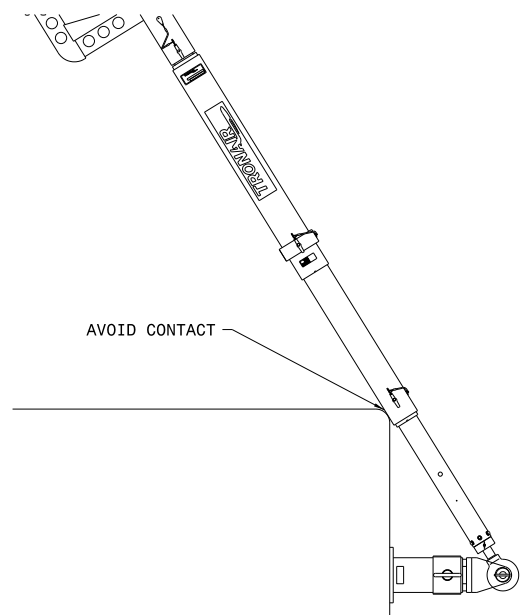


FIGURE 6

4.0 TRAINING

4.1 TRAINING REQUIREMENTS

The employer of the operator is responsible for providing a training program sufficient for the safe operation of the towbar.

4.2 TRAINING PROGRAM

The employer provided operator training program should cover safety procedures concerning use of the towbar in and around the aircraft at the servicing location.

4.3 OPERATOR TRAINING

The operator training should provide the required training for safe operation of the towbar.

NOTE: Maintenance and Trouble Shooting are to be performed by the skilled and trained technician.

5.0 PROVISION OF SPARES

5.1 SPARE PARTS

Spare parts may be obtained from the manufacturer:

TRONAIR, Inc.

1 Swanton Cargo Pkwy East
Swanton, Ohio 43558 USA

Telephone: (419) 866-6301 or 800-426-6301

Fax: (419) 867-0634

E-mail: sales@tronair.com

Website: www.tronair.com



For Spare Parts, Operations & Service Manuals or Service Needs:
Scan the QR code or visit Tronair.com/aftermarket

5.2 PARTS LISTS

Reference following pages for ordering information of Replacement Parts and Kits.

Recommended Spares to be kept on hand:

K-2304.....Kit, Ball Lok Pin Replacement

K-2766.....Kit, Bolt Replacement

K-3201.....Kit, Ball Lok Replacement

6.0 IN-SERVICE SUPPORT

Contact Tronair for technical services and information.

7.0 GUARANTEES/LIMITATION OF LIABILITY

Tronair products are warranted to be free of manufacturing or material defects for a period of one year after shipment to the original customer. This is solely limited to the repair or replacement of defective components. This warranty does not cover the following items:

- a) Parts required for normal maintenance
- b) Parts covered by a component manufacturers warranty
- c) Replacement parts have a 90-day warranty from date of shipment

If you have a problem that may require service, contact Tronair immediately. Do not attempt to repair or disassemble a product without first contacting Tronair, any action may affect warranty coverage. When you contact Tronair be prepared to provide the following information:

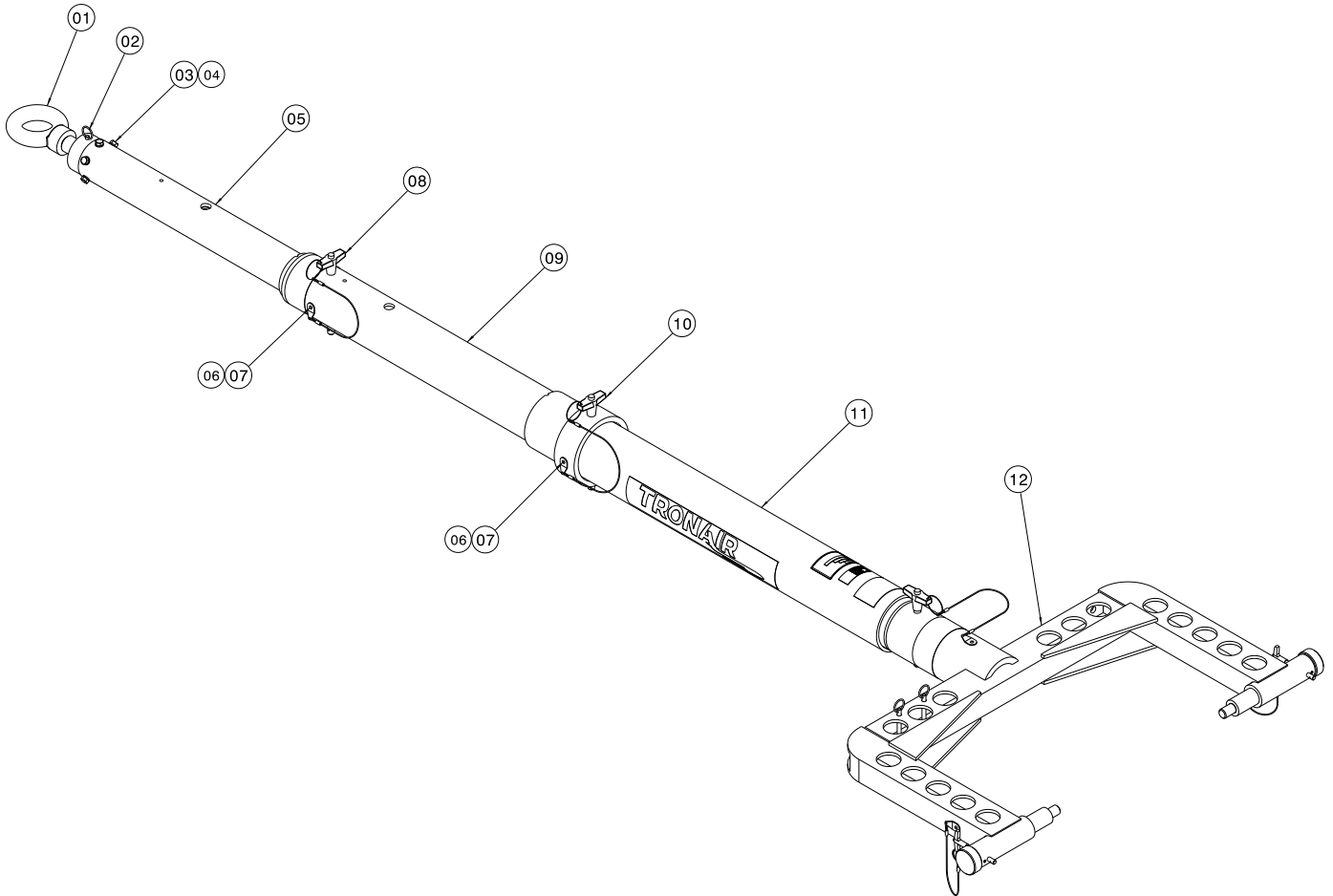
- a) Product Model Number
- b) Product Serial Number
- c) Description of the problem

If warranty coverage is approved, either replacement parts will be sent or the product will have to be returned to Tronair for repairs. If the product is to be returned, a Return Material Authorization (RMA) number will be issued for reference purposes on any shipping documents. Failure to obtain a RMA in advance of returning an item will result in a service fee. A decision on the extent of warranty coverage on returned products is reserved pending inspection at Tronair. Any shipments to Tronair must be shipped freight prepaid. Freight costs on shipments to customers will be paid by Tronair on any warranty claims only. Any unauthorized modification of the Tronair products or use of the Tronair products in violation of cautions and warnings in any manual (including updates) or safety bulletins published or delivered by Tronair will immediately void any warranty, express or implied.

The obligations of Tronair expressly stated herein are in lieu of all other warranties or conditions expressed or implied. **Any unauthorized modification of the Tronair products or use of the Tronair products in violations of cautions and warnings in any manual (including updates) or safety bulletins published or delivered by Tronair will immediately void any warranty, express or implied and Tronair disclaims any and all liability for injury (WITHOUT LIMITATION and including DEATH), loss or damage arising from or relating to such misuse.**

Parts List

When ordering replacement parts/kits, please specify model, serial number and color of your unit.



| Item | Part Number | Description | Qty |
|------|---------------|---|-----|
| ◆ 1 | Z-4605-01 | Assembly, Shock/Shear | 1 |
| 2 | G-1444-30 | Pin, Shear, 9/32" x 3" long | 1 |
| 3 | G-1420-106006 | Bolt, Hex Head, Grade 8, 5/16-18 x 3/4" long | 6 |
| 4 | G-1251-1060R | Lockwasher, 5/16 Regular | 6 |
| 5 | Z-5143-01 | Machining, Towbar 6-Bolt | 1 |
| 6 | G-1351-04 | Rivet, 1/8 Open-End Steel | 1 |
| 7 | H-1026*12.0 | Assembly, Lanyard, 12" long | 2 |
| 8 | G-1310-0848 | Pin, Ball Lok-T, 1/2" diameter x 4 3/4" long | 1 |
| 9 | Z-5145-01 | Machining, Extension | 1 |
| 10 | G-1310-0860 | Pin, Ball Lok-T, 1/2" diameter x 6" long | 1 |
| 11 | Z-5147-01 | Machining, Outer Tube | 1 |
| 12 | X-1115 | Assembly, Head | 1 |
| | K-2304 | Kit, Replacement Ball Lock Pin; consists of: | |
| 6 | G-1351-04 | Rivet, 1/8 Open-End Steel | 1 |
| 7 | H-1026*12.0 | Assembly, Lanyard, 12" long | 2 |
| 8 | G-1310-0848 | Pin, Ball Lok-T, 1/2" diameter x 4 3/4" long | 1 |

◆ Due to the high compression used in assembly, this Shock Assembly should be returned to Tronair for repair. Discuss with your Salesperson.

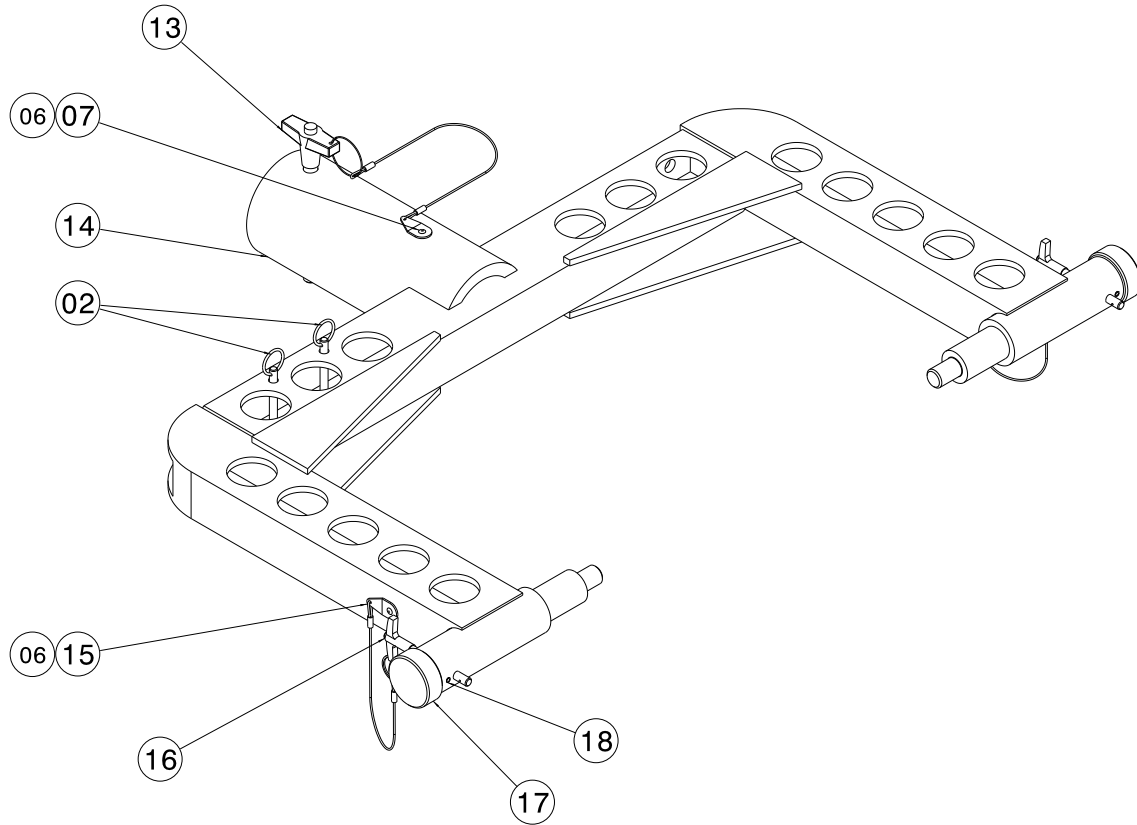
Parts List

When ordering replacement parts/kits, please specify model, serial number and color of your unit.

| Item | Part Number | Description | Qty |
|------|---------------|---|-----|
| | K-2766 | Kit, Replacement Bolt; consists of: | |
| 3 | G-1420-106006 | Bolt, Hex Head, Grade 8, 5/16-18 x 3/4" long | 6 |
| 4 | G-1251-1060R | Lockwasher, 5/16 Regular | 6 |
| | K-3200 | Kit, Replacement Shear Pin; consists of: | |
| 2 | G-1444-30 | Pin, Shear, 9/32" x 3" long | 1 |
| | K-3201 | Kit, Replacement Ball Lock Lanyard; consists of: | |
| 6 | G-1351-04 | Rivet, 1/8 Open-End Steel | 1 |
| 7 | H-1026*12.0 | Assembly, Lanyard, 12" long | 2 |
| 10 | G-1310-0860 | Pin, Ball Lok-T, 1/2 " diameter x 6" long | 1 |

Parts List

When ordering replacement parts/kits, please specify model, serial number and color of your unit.



| Item | Part Number | Description | Qty |
|------|---------------|---|-----|
| 2 | G-1444-30 | Pin, Shear, 9/32" x 3" long | 2 |
| 6 | G-1351-04 | Rivet, 1/8 Open-End Steel | 2 |
| 7 | H-1026*12.0 | Assembly, Lanyard, 12" long | 2 |
| 13 | G-1310-0845 | Pin, Ball Lok-T, 1/2" diameter x 4 1/2" long | 1 |
| 14 | Z-5141-01 | Weldment, Head | 1 |
| 15 | H-1026*07.0 | Assembly, Lanyard, 7" long | 2 |
| 16 | G-1310-0525 | Pin, Ball Lok-T, 5/16" diameter x 2 1/2" long | 2 |
| 17 | R-1776 | Pin, Sliding | 2 |
| 18 | G-1300-19040 | Pin, Roll, 3/16" diameter x 1/2" long | 2 |
| | K-1337 | Kit, Replacement Ball Lock Pin; consists of: | |
| 6 | G-1351-04 | Rivet, 1/8 Open-End Steel | 2 |
| 15 | H-1026*07.0 | Assembly, Lanyard, 7" long | 2 |
| 16 | G-1310-0525 | Pin, Ball Lok-T, 5/16" diameter x 2 1/2" long | 2 |
| | K-2928 | Kit, Replacement Ball Lock Pin; consists of: | |
| 6 | G-1351-04 | Rivet, 1/8 Open-End Steel | 2 |
| 7 | H-1026*12.0 | Assembly, Lanyard, 12" long | 2 |
| 13 | G-1310-0845 | Pin, Ball Lok-T, 1/2" diameter x 4 1/2" long | 1 |
| | K-4046 | Kit, Towbar Head Weldment; consists of: | |
| 14 | Z-5141-01 | Weldment, Head (includes labels) | 1 |



APPENDIX I

Declaration of Conformity



DECLARATION of CONFORMITY

The design, development and manufacture is in accordance with European Community guidelines

Portable Towbar
01-1282-0010

Relevant provisions complied with by the machinery:
2006/42/EC

Relevant standards complied with by the machinery:
EN ISO 12100-1

Identification of person empowered to sign on behalf of the Manufacturer:

A handwritten signature in black ink that reads "Patrick Finch". The signature is written in a cursive style and is positioned above a horizontal line.

Quality Assurance Representative