

Models:
01-1950-5000, 01-1951-5000
01-1952-5000, 01-1953-5000
Telecoupler

03/1993 – Rev. 01

TABLE OF CONTENTS

	<u>PAGE</u>
1.0 GENERAL DESCRIPTION	1
2.0 SPECIFICATIONS	1
3.0 FEATURES.....	1
4.0 PREPARATION FOR USE	1
4.1 TUG INSTALLATION	1
4.2 TELECOUPLER OPERATION.....	1
5.0 PROVISION OF SPARES.....	2
5.1 SPARE PARTS	2
5.2 PARTS LISTS & ILLUSTRATIONS	2
6.0 IN-SERVICE SUPPORT	2
7.0 GUARANTEES/LIMITATION OF LIABILITY.....	2

Tronair towbars/heads must only be used with matching Tronair heads/towbars, and Tronair shear pins.

This product can not be modified without the written approval of Tronair, Inc. Any modifications done without written approval voids all warranties and releases Tronair, Inc., its suppliers, distributors, employees, or financial institutions from any liability from consequences that may occur. Only Tronair OEM replacement parts shall be used.

1.0 GENERAL DESCRIPTION

The Tronair Telecoupler allows a safe one person connection of the towbar to the tug. The telecoupler was designed to facilitate the tug operator, and to help eliminate back injuries often associated with strenuous lifting activity.

2.0 SPECIFICATIONS

Model	Maximum Aircraft Weight	Adapter Plate Dimensions (Inches)	Weight	Overall Length (Inches)
01-1950-5000	100,000 lbs	1 High x 8 Wide x 8 Long	60 lbs	17
01-1951-5000	950,000 lbs	1 High x 8 Wide x 10 Long	132 lbs	23
01-1952-5000	100,000 lbs	1 High x 8 Wide x 8 Long	60 lbs	11
01-1953-5000	950,000 lbs	1 High x 8 Wide x 10 Long	132 lbs	17

Models 01-1952-5000 and 01-1953-5000 are the same as the Telecoupler, however, they have a flat mounting plate instead of the coupler. This allows for the mounting of the present coupler from the tug onto the telescoping mechanism.

3.0 FEATURES

- Single person operation
- Speed up aircraft hook-up
- Limits back injuries
- Easy to mount

4.0 PREPARATION FOR USE

The Telecoupler is shipped fully assembled, and only the following steps are required to make it operational:

4.1 TUG INSTALLATION

1. Find suitable mounting surface on tug.
2. Drill through holes on tug mounting surface for one-half (1/2") bolt (bolt, locknut, and flatwasher supplied). Or, tap mounting surface for one-half (1/2") bolt.

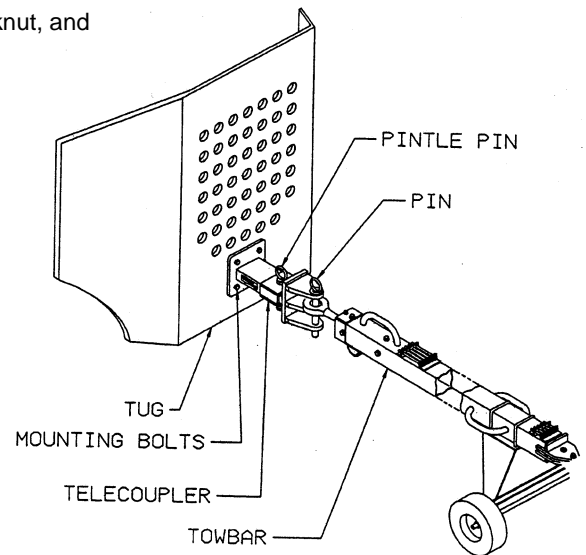
NOTE: Three-quarter inch (3/4") minimum thread in tapped hole required (bolts not supplied; use lockwasher with the application).

3. Torque mounting bolts to 75 ft-lbs.
4. On Models: 01-1952-5000, 01-1953-5000 only, install coupling device onto front of Telecoupler.

4.2 TELECOUPLER OPERATION

Reference Figure

1. Drive the tug within 5-8 inches of the towbar.
2. Pull the pintle pin on the coupler and then extend the coupler to meet the towbar.
3. Connect coupler to towbar.
4. Drive the tug towards the aircraft until the pintle pin snaps into place.
5. Tow aircraft.



Component Location



CAUTION!

Do not tow aircraft with Telecoupler in extended position.

5.0 PROVISION OF SPARES

5.1 SPARE PARTS

Spare parts may be obtained from the manufacturer:

TRONAIR, Inc.

1 Air Cargo Pkwy East

Swanton, Ohio 43558 USA

Telephone: (419) 866-6301 or 800-426-6301

Fax: (419) 867-0634

E-mail: sales@tronair.com

Website: www.tronair.com

5.2 PARTS LISTS & ILLUSTRATIONS

Reference the following page for Replacement Parts and Kits available.

6.0 IN-SERVICE SUPPORT

Contact Tronair for technical services and information.

7.0 GUARANTEES/LIMITATION OF LIABILITY

Tronair products are warranted to be free of manufacturing or material defects for a period of one year after shipment to the original customer. This is solely limited to the repair or replacement of defective components. This warranty does not cover the following items:

- a) Parts required for normal maintenance
- b) Parts covered by a component manufacturers warranty
- c) Replacement parts have a 90-day warranty from date of shipment

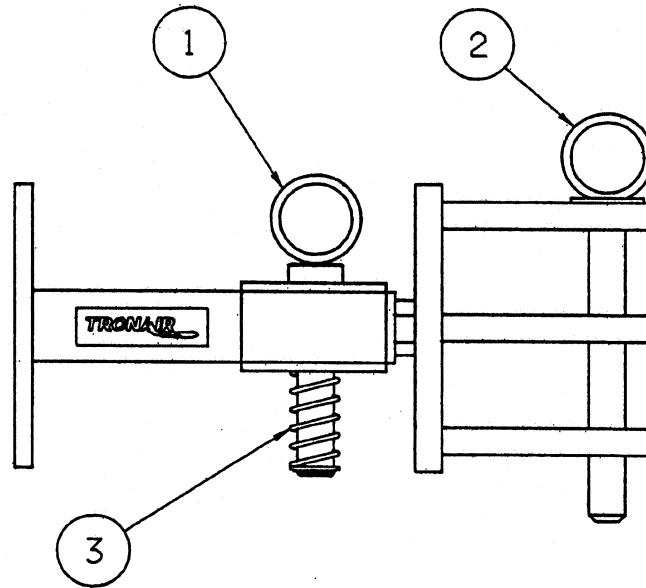
If you have a problem that may require service, contact Tronair immediately. Do not attempt to repair or disassemble a product without first contacting Tronair, any action may affect warranty coverage. When you contact Tronair be prepared to provide the following information:

- a) Product Model Number
- b) Product Serial Number
- c) Description of the problem

If warranty coverage is approved, either replacement parts will be sent or the product will have to be returned to Tronair for repairs. If the product is to be returned, a Return Material Authorization (RMA) number will be issued for reference purposes on any shipping documents. Failure to obtain a RMA in advance of returning an item will result in a service fee. A decision on the extent of warranty coverage on returned products is reserved pending inspection at Tronair. Any shipments to Tronair must be shipped freight prepaid. Freight costs on shipments to customers will be paid by Tronair on any warranty claims only. Any unauthorized modification of the Tronair products or use of the Tronair products in violation of cautions and warnings in any manual (including updates) or safety bulletins published or delivered by Tronair will immediately void any warranty, express or implied.

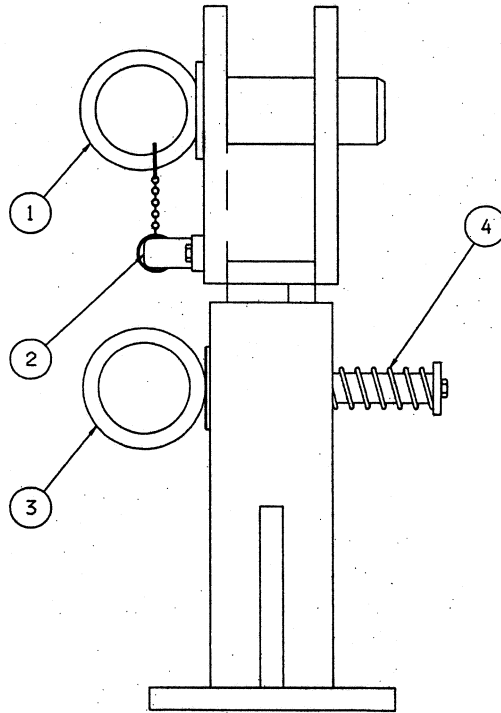
The obligations of Tronair expressly stated herein are in lieu of all other warranties or conditions expressed or implied. **Any unauthorized modification of the Tronair products or use of the Tronair products in violations of cautions and warnings in any manual (including updates) or safety bulletins published or delivered by Tronair will immediately void any warranty, express or implied and Tronair disclaims any and all liability for injury (WITHOUT LIMITATION and including DEATH), loss or damage arising from or relating to such misuse.**

Parts List
Models: 01-1950-5000 & 01-1952-5000



Item	Part Number	Description	Qty
1	Z-2307	Pin, Pintle	1
2	Z-2308	Pin (Model 01-1950-5000 only)	1
3	K-2036	Kit, Spring Replacement; consists of:	
	H-1728	Spring	1
	G-1392-100-S	Ring, External Retainer	1
	G-1284	Washer, Modified	1

Parts List
Models: 01-1951-5000 & 01-1953-5000



Item	Part Number	Description	Qty
3	Z-2341	Weldment, Pintle Pin	1
1	K-2043	Kit, Pin Replacement (Model 01-1951-5000 only); consists of:	
	Z-2342	Weldment, Pin	
	H-1779*012.00	Chain	
	H-1025	Ring, Split Retainer	
2	K-2044	Kit, Handle Replacement; consists of:	
	H-1780	Handle, Grab	
	G-1100-105512	Bolts, ¼-28	
	G-1250-1050N	Flatwasher, ¼ Narrow	
	G-1251-1050N	Lockwasher, ¼ Narrow	
4	K-2045	Kit, Spring Replacement; consists of:	
	H-1728	Spring	
	G-1412	Spring Cup	
	G-1100-105510	Bolt, ¼-28	