

**Models: 01-1280-0000, 01A1280-0000,
01-1280-9000, 01A1280-9000
CASA CN295 Custom Towbar**



01/2023 – Rev. 01

**For Spare Parts, Operations & Service Manuals or Service Needs
Scan the QR code or visit Tronair.com/aftermarket**



REVISION
01

DATE
01/2023

TEXT AFFECTED
Original release

TABLE OF CONTENTS**PAGE**

1.0	PRODUCT INFORMATION	1
1.1	DESCRIPTION.....	1
1.2	MODEL & SERIAL NUMBER.....	1
1.3	MANUFACTURER.....	1
1.4	SPECIFICATIONS.....	1
1.5	FEATURES.....	1
2.0	SAFETY INFORMATION	2
2.1	GENERAL.....	2
2.2	USAGE AND SAFETY INFORMATION.....	2
3.0	TRAINING	2
3.1	TRAINING REQUIREMENTS.....	2
3.2	TRAINING PROGRAM.....	2
3.3	OPERATOR TRAINING.....	2
4.0	OPERATION	3
4.1	PRELIMINARY CHECKLIST.....	3
4.1.1	Towbar.....	3
4.1.2	Towing Head.....	3
4.2	USAGE PROCEDURE.....	3
4.2.1	Aircraft Attachment.....	3
4.2.2	Tug Attachment.....	3
4.2.3	Couplers.....	4
4.2.4	Towing Operation.....	4
5.0	PROVISION OF SPARES	5
5.1	SOURCE OF SPARE PARTS.....	5
5.2	RECOMMENDED SPARE PARTS LISTS.....	5
6.0	IN-SERVICE SUPPORT	5
7.0	GUARANTEES/LIMITATION OF LIABILITY	5

Tronair towbars/heads must only be used with matching Tronair heads/towbars, and Tronair shear pins.

This product cannot be modified without the written approval of Tronair, Inc. Any modifications done without written approval voids all warranties and releases Tronair, Inc., its suppliers, distributors, employees, or financial institutions from any liability from consequences that may occur. Only Tronair OEM replacement parts shall be used.

1.0 PRODUCT INFORMATION

1.1 DESCRIPTION

These custom Towbars are designed for towing CASA C295 Aircraft manufactured by Construcciones Aeronauticas SA.

The towbars have an aircraft attachment by machined pins on the towing head to the nose landing gear tow point. There is a handle and an eyebolt at the end of the towbar for towing.

1.2 MODEL & SERIAL NUMBER

Reference nameplate on unit

1.3 MANUFACTURER

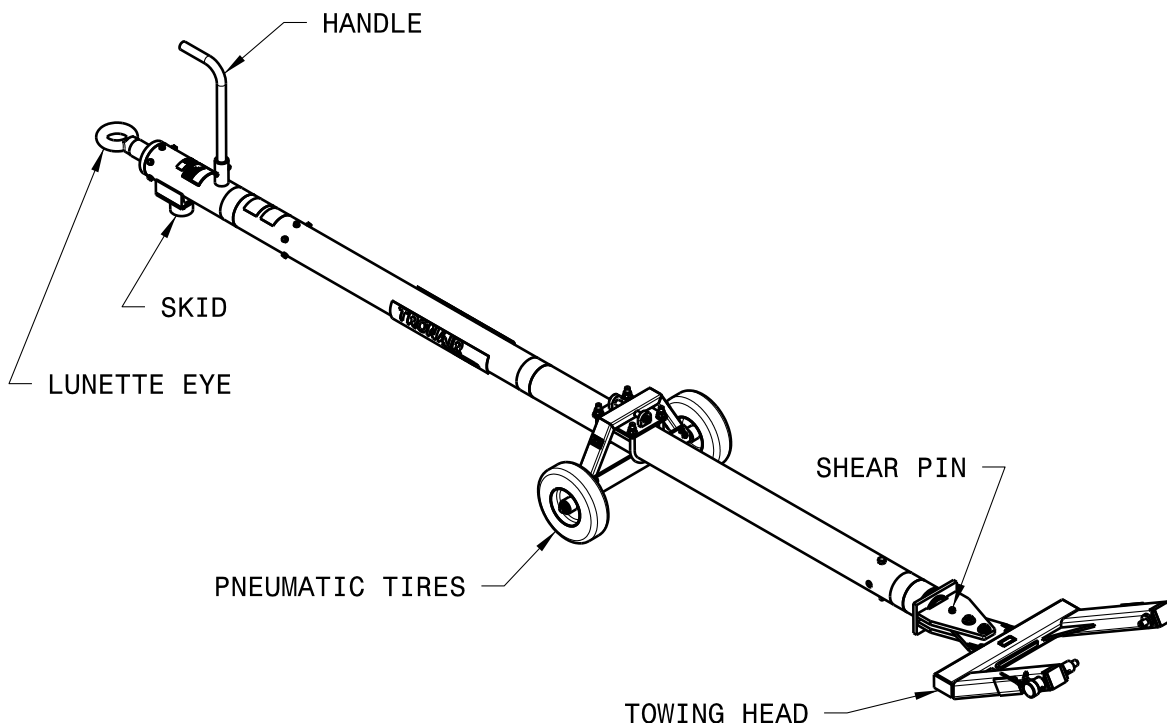
TRONAIR, Inc.
1 Air Cargo Pkwy East
Swanton, Ohio 43558 USA

Telephone: (419) 866-6301 or 800-426-6301
Fax: (419) 867-0634
E-mail: sales@tronair.com
Website: www.tronair.com

1.4 SPECIFICATIONS

Aircraft Application	CASA C295 Aircraft manufactured by Construcciones Aeronauticas SA
Maximum Aircraft Gross Weight.....	51,266 lbs (23.3 Metric tons)
Shear Pin Requirements	
Maximum Axial Shear	10,815 lbs (48,125 N)
Maximum Radial Shear	53,717 lbs-in (6,070 N-m)
Length	152 in (386.1 cm) From eyebolt centerline to aircraft attachment centerline
Width	22.5 in (57.2 cm)
Height.....	16.69 in (42.4 cm) From ground level to aircraft attachment pins
Weight.....	180 lbs (81.6 kg)
Material	Aluminum Towbar Steel Towing Head
Finish.....	Blue Powder Coat (01-1280-0000 & 02A1280-0000) Low-Infrared Olive Drab Paint (01-1280-0000 & 02A1280-0000)

1.5 FEATURES



2.0 SAFETY INFORMATION**2.1 GENERAL**

These Tronair Towbars are used for moving the CASA C295 Aircraft only.

2.2 USAGE AND SAFETY INFORMATION

To insure safe operations please read the following statements and understand their meaning. Also refer to your equipment manufacturer's manual for other important safety information. This manual contains safety precautions which are explained below. Please read carefully.

**WARNING!**

Warning is used to indicate the presence of a hazard that can cause **severe personal injury, death, and/or substantial property damage** if the Warning Notice is ignored.

**CAUTION!**

Caution is used to indicate the presence of a hazard, which will or can cause **minor personal injury or property damage** if the Caution Notice is ignored.

**WARNING!**

A damaged or bent towbar should not be used. Towbar should be repaired or replaced.

3.0 TRAINING**3.1 TRAINING REQUIREMENTS**

The employer of the operator is responsible for providing a training program sufficient for the safe operation of the towbar.

3.2 TRAINING PROGRAM

The employer provided operator training program should cover safety procedures concerning use of the towbar in and around the aircraft at the servicing location.

3.3 OPERATOR TRAINING

The operator training should provide the required training for safe operation of the towbar.

NOTE: Maintenance and Trouble Shooting are to be performed by the skilled and trained technician.

4.0 OPERATION

4.1 PRELIMINARY CHECKLIST

4.1.1 Towbar

- Check eyebolt for bending, excessive wear and deformity.
- Check shock assembly mounting bolts. Ensure they are not loose or missing.

4.1.2 Towing Head

- Check welds between side rails and head rail for cracks.
- Check welds between side rails and stationary pin. Also sliding pin wear sleeve for cracks.
- Check fastener connection of towing head to towbar. Ensure the connection is not loose or missing.
- Check sliding pin ball lok-T pin. Ensure ball lok-T pin is securely attached to the side rail via its lanyard. Ensure ball lok-T pin is not missing.
- Check sliding pin for bending or excessive wear. Ensure sliding pin slides freely.
- Check sliding pin roll pin. Ensure roll pin is not loose or missing.
- Check shear pin. Ensure shear pin is not broken; replace if required.



WARNING!

Towing an aircraft using a towbar with a broken or missing shear pin may cause damage to the aircraft.

4.2 USAGE PROCEDURE

4.2.1 Aircraft Attachment



CAUTION!

It is recommended that your towbar to attached to the aircraft first, and then connected to the tug to avoid possible aircraft damage.

- Ensure the sliding pin is locked in place using the ball lok-T pin.

4.2.2 Tug Attachment



CAUTION!

Damage to the towbar or aircraft can result from an excessive towbar angle during towing operations. Reference Figure 1.

- Use a pintle height so that the towbar is as level as possible during towing. Also, the pintle hook height should prevent contact of the towbar with the ground during towing.

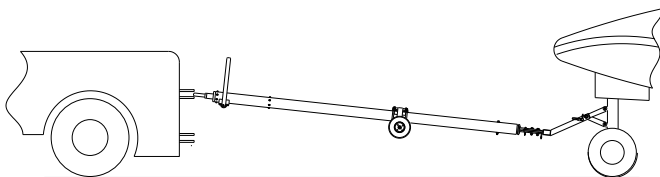


FIGURE 1 – Incorrect

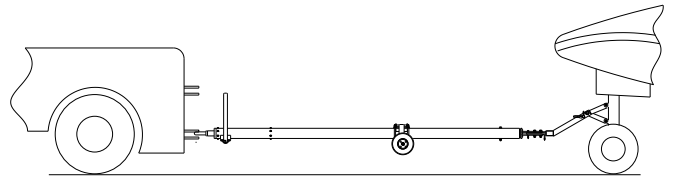


FIGURE 2 – Correct

4.2.3

Couplers



CAUTION!

Damage to the towbar or aircraft can result while towing with the following types of couplers:

- Lift Head
- Standard Duty Latch
- Vertical Side Swing Latch
- Swivel Hook

The couplers listed above are known to cause binding and failure in the eyebolt. Indicators of binding are wear on outside diameter of the eyebolt and indentation on the inside diameter of the eyebolt. **Reference Figure 3.**

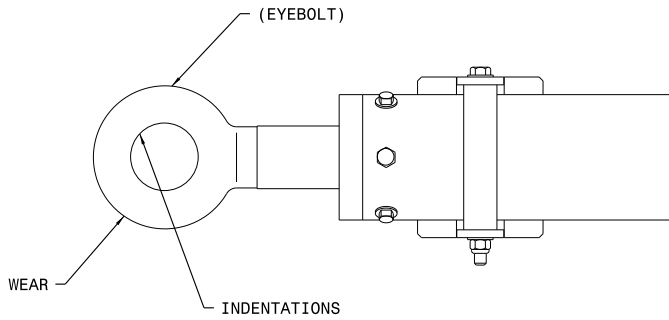


FIGURE 3

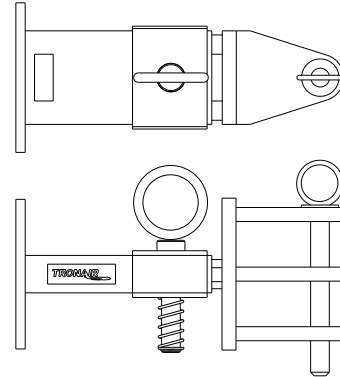


FIGURE 4

01-1950-5000 Standard Telecoupler

Tronair recommends a telecoupler pintle hook arrangement. This arrangement is known to eliminate binding. Tronair offers a Standard Telecoupler, Model Number 01-1950-5000, for use on tugs. **Reference Figure 4.**

Damage to the towbar and/or aircraft can result by towing or pushing an aircraft with an incorrect size eyebolt or pintle pin. A correct size eyebolt will make contact with the pintle pin. A gap between the eyebolt outside diameter and the coupler face plate should be easily seen. An eyebolt which is too large will cause the eyebolt to make contact with the face plate of the coupler. When the eyebolt is too large for the coupler, a gap between the inside diameter of the eyebolt and the coupler face plate will be seen. **Reference Figure 5.**

To ensure proper towing and pushing, check to make sure the pintle pin diameter is not too long for the eyebolt's inside diameter. An approximate one-half inch (1/2") gap between the pin diameter and the eyebolt should be seen. If any of these conditions are not met, please contact Tronair for information to obtain a new coupler.

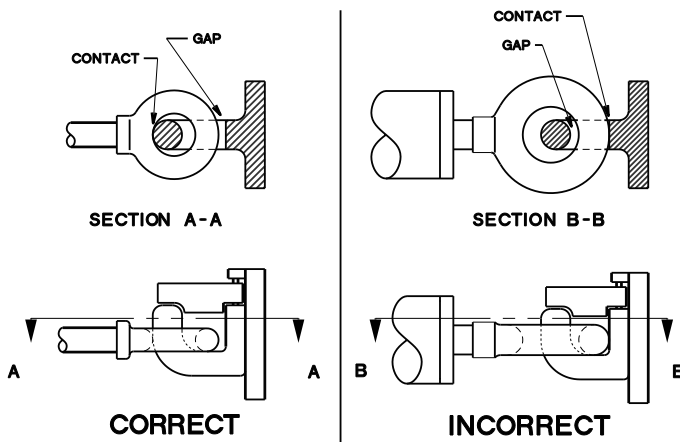


FIGURE 5

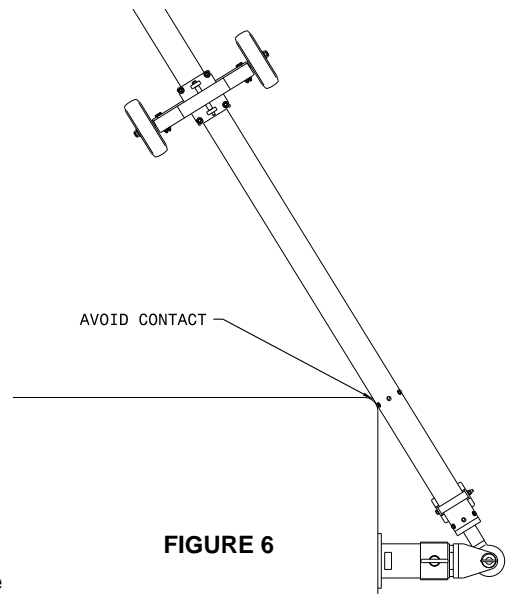


FIGURE 6

4.2.4

Towing Operation

Damage to the towbar or aircraft can result from pushing an aircraft while maintaining too sharp of an angle between the tug and the aircraft. Contact between the towbar weldment and the tug must be avoided. It is recommended that the angle between the tug and towbar not exceed 90°. **Reference Figure 6.**

5.0 PROVISION OF SPARES

5.1 SOURCE OF SPARE PARTS

Spare parts may be obtained from the manufacturer:

TRONAIR, Inc.

1 Air Cargo Pkwy East
Swanton, Ohio 43558 USA

Telephone: (419) 866-6301 or 800-426-6301

Fax: (419) 867-0634

E-mail: sales@tronair.com

Website: www.tronair.com

For Spare Parts, Operations & Service Manuals or Service Needs:
Scan the QR code or visit Tronair.com/aftermarket



5.2 RECOMMENDED SPARE PARTS LISTS

Reference the following page(s) for Replacement Parts and Kits available.

Recommended Spares to be kept on hand:

K-1112.....Kit, Wheel Replacement (Single)

K-1308.....Kit, Ball Loc Pin Replacement

K-2322.....Shear Pin

6.0 IN-SERVICE SUPPORT

Contact Tronair, Inc. for technical services and information. See Section 1.3 – Manufacturer.

7.0 GUARANTEES/LIMITATION OF LIABILITY

Tronair products are warranted to be free of manufacturing or material defects for a period of one year after shipment to the original customer. This is solely limited to the repair or replacement of defective components. This warranty does not cover the following items:

- a) Parts required for normal maintenance
- b) Parts covered by a component manufacturers warranty
- c) Replacement parts have a 90-day warranty from date of shipment

If you have a problem that may require service, contact Tronair immediately. Do not attempt to repair or disassemble a product without first contacting Tronair, any action may affect warranty coverage. When you contact Tronair be prepared to provide the following information:

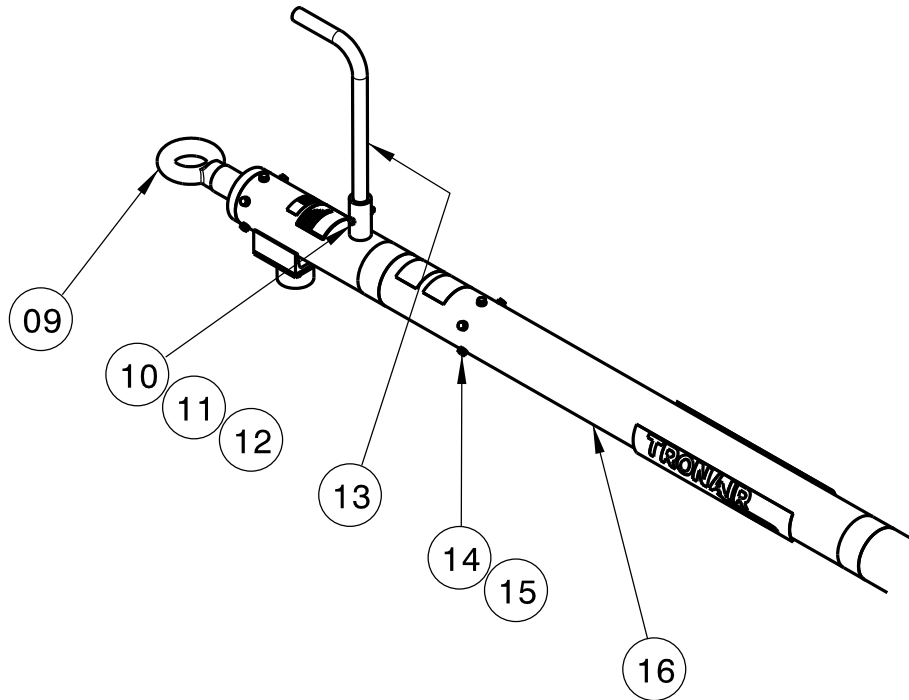
- a) Product Model Number
- b) Product Serial Number
- c) Description of the problem

If warranty coverage is approved, either replacement parts will be sent or the product will have to be returned to Tronair for repairs. If the product is to be returned, a Return Material Authorization (RMA) number will be issued for reference purposes on any shipping documents. Failure to obtain a RMA in advance of returning an item will result in a service fee. A decision on the extent of warranty coverage on returned products is reserved pending inspection at Tronair. Any shipments to Tronair must be shipped freight prepaid. Freight costs on shipments to customers will be paid by Tronair on any warranty claims only. Any unauthorized modification of the Tronair products or use of the Tronair products in violation of cautions and warnings in any manual (including updates) or safety bulletins published or delivered by Tronair will immediately void any warranty, express or implied.

The obligations of Tronair expressly stated herein are in lieu of all other warranties or conditions expressed or implied. **Any unauthorized modification of the Tronair products or use of the Tronair products in violations of cautions and warnings in any manual (including updates) or safety bulletins published or delivered by Tronair will immediately void any warranty, express or implied and Tronair disclaims any and all liability for injury (WITHOUT LIMITATION and including DEATH), loss or damage arising from or relating to such misuse.**

Parts List

When ordering replacement parts/kits, please specify model, serial number and color of your unit.

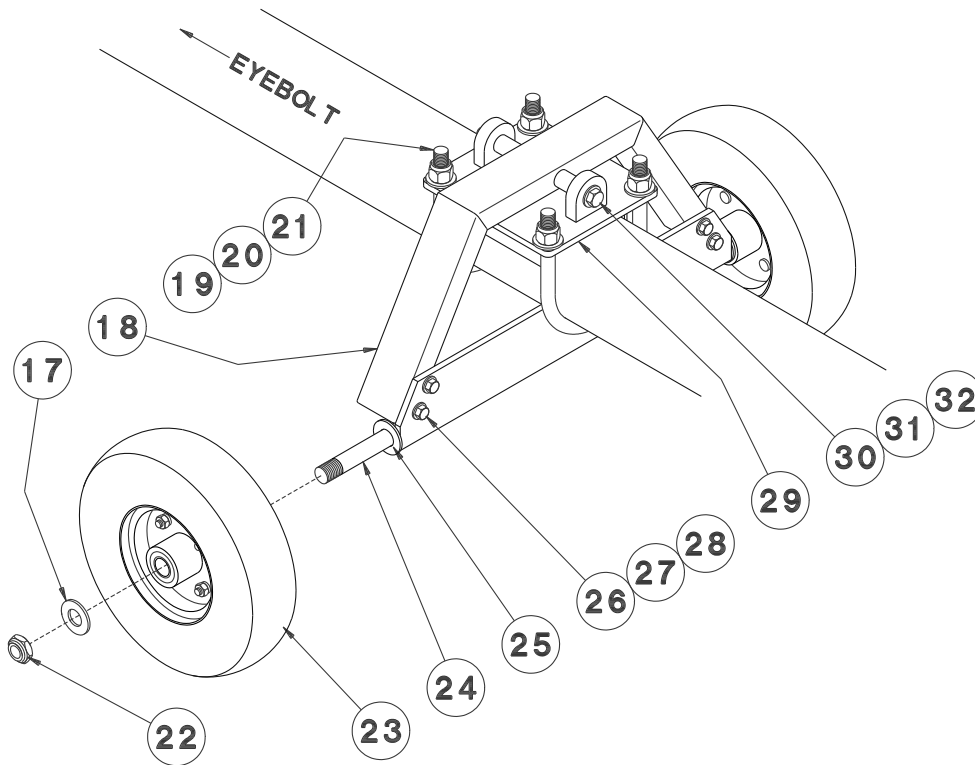


Item	Part Number	Description	Qty
16	Z-6376-01	Machining, Towbar (01-1280-0000/01A1280-0000) - <i>Not Sold Separately</i>	REF
	Z-6376-02	Machining, Towbar (01-1280-9000/01A1280-9000) <i>Not Sold Separately</i>	
10	G-1100-105520	Bolt, Hex Head, Grade 5, ¼ - 28	1
11	G-1202-1055	Stop Nut, ¼ - 28 Elastic	1
12	G-1250-1050N	Flatwasher, ¼ Narrow	1
13	TR-1857-01	Tube, Handle	1
	K-2905	Kit, Shock Replacement (01-1280-0000/01-1280-9000); <i>consists of:</i>	
◆ 9	Z-3999	Assembly, Shock	1
14	G-1420-106006	Bolt, Hex Head, Grade 8, 5/16-18 x ¾" long	12
15	G-1251-1060R	Lockwasher, 5/16 Regular	12
	K-3012	Kit, Shock Replacement (01A1280-0000/01A1280-9000); <i>consists of:</i>	
◆ 9	Z-4137	Assembly, Shock	1
14	G-1420-106006	Bolt, Hex Head, Grade 8, 5/16-18 x ¾" long	12
15	G-1251-1060R	Lockwasher, 5/16 Regular	12

- ◆ Due to the high compression used in assembly, this assembly should be returned to Tronair for repair. Discuss with your Salesperson.

Parts List

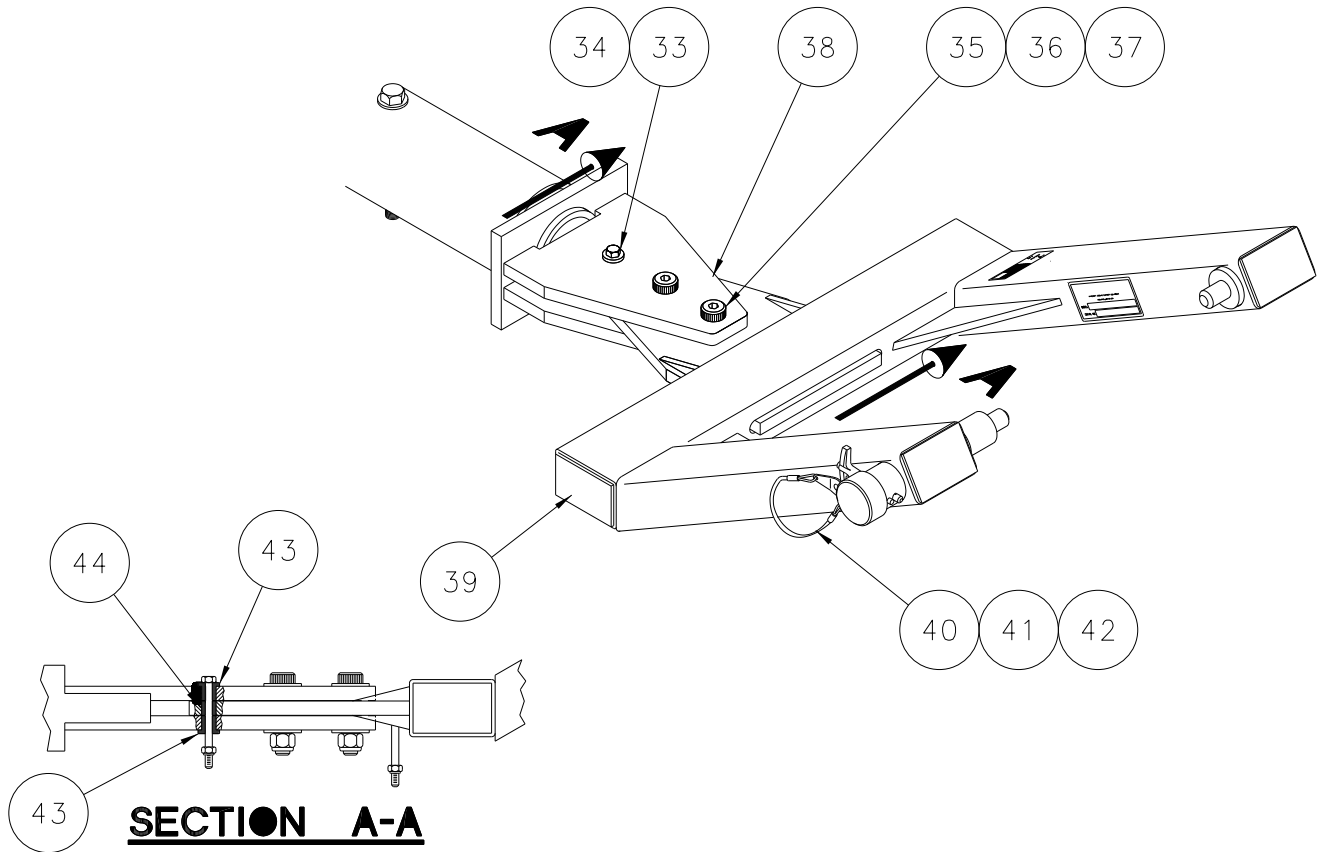
When ordering replacement parts/kits, please specify model, serial number and color of your unit.



Item	Part Number	Description	Qty
18	Z-3697-01	Weldment, Landing Gear (01-1280-0000/01A1280-0000)	1
	Z-3697-02	Weldment, Landing Gear (01-1280-9000/01A1280-9000)	
19	G-1009-33	U-Bolt	2
20	G-1250-1090N	Flatwasher, 1/2 Narrow	4
21	G-1203-1095	Jamnut, 1/2-20 Elastic	4
29	Z-1777-02-02	Weldment, Landing Gear Bracket	1
30	G-1100-107554	Bolt, Hex Head, Grade 5, 3/8-24 x 5 1/2" long	1
31	G-1250-1090N	Flatwasher, 1/2 Narrow	2
32	G-1202-1075	Stopnut, 3/8-24 Elastic	1
	K-1112	Kit, Wheel (Single) Replacement; consists of:	
17	G-1250-1100N	Flatwasher, 5/8 Narrow	1
22	G-1203-1105	Jamnut, 5/16-18 Elastic	1
23	U-1024	Wheel, with Pneumatic Tire	1
	K-1560	Kit, Axle Replacement; consists of:	
17	G-1250-1100N	Flatwasher, 5/8 Narrow	2
22	G-1203-1105	Jamnut, 5/8-18 Elastic	2
24	Z-1790-02	Weldment, Axle Mounting Bracket	1
25	TR-1583	Spacer, Wheel	2
26	G-1100-105526	Bolt, Hex Head, Grade 5, 1/4-28 x 2 3/4" long	4
27	G-1250-1050N	Flatwasher, 1/4 Narrow	8
28	G-1202-1055	Stopnut, 1/4-28 Elastic	4

Parts List

When ordering replacement parts/kits, please specify model, serial number and color of your unit.



Item	Part Number	Description	Qty
35	G-1155-109216	Socket Head Shoulder Screw, 5/8" diameter	2
36	G-1202-1090	Stopnut, 1/2-3 Elastic	2
37	G-1250-1100N	Flatwasher, 5/8 Narrow	4
38	Z-5669-01	Machining, Shear Plate (01-1280-0000/01A1280-0000) - <i>Not Sold Separately</i>	REF
	Z-5669-02	Machining, Shear Plate (01-1280-9000/01A1280-9000) - <i>Not Sold Separately</i>	
39	Z-4072-02	Weldment, Head	1
43	H-1724-03	Bushing, Head Press Fit	2
44	H-1725-03	Bushing, Headless	1
	K-1308	Kit, Ball Lok-T Pin Replacement; consists of:	
40	G-1310-0415	Pin, Ball Lok-T, 1/4" diameter x 1.5" Grip	1
41	G-1351-04	Rivet, 1/8 Open-End Steel	1
42	H-1026*07.0	Assembly, Lanyard	1
	K-2322	Kit, Shear Pin; consists of:	
33	G-1202-1050	Stopnut, 1/4-20 Elastic	1
34	G-1420-105030	Bolt, Hex Head, Grade 8, 1/4-20 x 3" long	1



APPENDIX I

Declaration of Conformity



EU Declaration of Conformity

Model Number(s) 01-1280-0000, 01A1280-0000, 01-1280-9000, 01A1280-9000

Product Type/Name: Custom Towbar

Serial Number(s): Enter serial number(s)

Declaration: Tronair has assessed the equipment described above against the Essential Health and Safety Requirements of one or more Directives. Based on this assessment, the equipment described above is deemed to comply with the directive(s) listed below.

This declaration of conformity is issued under the sole responsibility of the manufacturer.

Directives: European Machinery Directive 2006/42/EC

Standards: EN ISO 12100:2011 Safety of machinery – General principles for design – Risk assessment and risk reduction

Markings: 

The technical documentation for the machinery is available from:

Mr. Joel Nunn
34 Epirus Road, SW6 7UH, London, UK
Email: jnunn@tronair.com

Location of Issue: Tronair, 1 Air Cargo Parkway East, Swanton, OH 43558

Certificate: EU_DoC_01-1280-0000, 01A1280-0000, 01-1280-9000, 01A1280-9000

Identification of person empowered to sign on behalf of the Manufacturer:


Quality Assurance Representative

Enter a date
Date

