

Model: 02-4951-0100
Disabled Aircraft Dolly

05/2023 - Rev. 03

For Spare Parts, Operations & Service Manuals or Service Needs
Scan the QR code or visit [Tronair.com/aftermarket](https://www.tronair.com/aftermarket)



| REVISION | DATE | TEXT AFFECTED |
|----------|---------|---------------------|
| 01 | 03/2006 | Major Revision |
| 02 | 05/2013 | Modified Parts List |
| 03 | 05/2023 | Major revision |

TABLE OF CONTENTS

| | <u>PAGE</u> |
|---|-------------|
| 1.0 PRODUCT INFORMATION | 1 |
| 1.1 DESCRIPTION..... | 1 |
| 1.2 MODEL & SERIAL NUMBER..... | 1 |
| 1.3 MANUFACTURER | 1 |
| 1.4 SPECIFICATIONS | 1 |
| 2.0 SAFETY INFORMATION..... | 1 |
| 2.1 USAGE AND SAFETY INFORMATION | 1 |
| 3.0 ASSEMBLY | 2 |
| 4.0 TRAINING | 2 |
| 4.1 TRAINING REQUIREMENTS | 2 |
| 4.2 TRAINING PROGRAM | 2 |
| 4.3 OPERATOR TRAINING | 2 |
| 5.0 OPERATING PROCEDURES..... | 3 |
| 6.0 MAINTENANCE..... | 4 |
| 7.0 PROVISION OF SPARES..... | 4 |
| 7.1 SOURCE OF SPARE PARTS..... | 4 |
| 7.2 RECOMMENDED SPARE PARTS LISTS | 4 |
| 8.0 IN SERVICE SUPPORT..... | 4 |
| 9.0 GUARANTEES/LIMITATION OF LIABILITY | 4 |

This product can not be modified without the written approval of Tronair, Inc. Any modifications done without written approval voids all warranties and releases Tronair, Inc., its suppliers, distributors, employees, or financial institutions from any liability from consequences that may occur. Only Tronair OEM replacement parts shall be used.

1.0 PRODUCT INFORMATION

1.1 DESCRIPTION

The Tronair Model 02-4951-0100, Disabled Aircraft Dolly is designed to transport disabled aircraft that are immobilized and unable to be transported by normal means due to blown tires or similar faults.

The following features are standard on this unit:

- Simple operation, can be managed by one (1) person
- Heavy structural steel construction, durable
- Solid rubber tires, always ready for use
- Four (4) Steel skid wheels for final positioning
- Expanded metal steel reinforced storage tray
- Mobile, self contained, needs no additional equipment
- A towbar with forged eyebolt facilitates tow tractor transport and manual transport
- Front and rear wheels pivot allowing the dolly to be lowered to the ground for ease of loading damaged aircraft
- Front and rear hydraulic systems for independent control of level dolly operation
- Hand pumps require 35 lb. handle force to actuate total hydraulic cylinder movement; 16,000 lbs. maximum load
- Self-leveling foot pads accommodate uneven towing surfaces
- Heavy duty chain pullers easily cinch aircraft tires

1.2 MODEL & SERIAL NUMBER

Reference nameplate on unit

1.3 MANUFACTURER

TRONAIR, Inc.
1 Air Cargo Pkwy East
Swanton, Ohio 43558 USA

Telephone: (419) 866-6301 or 800-426-6301
Fax: (419) 867-0634
E-mail: sales@tronair.com
Website: www.tronair.com

1.4 SPECIFICATIONS

Length 177 in (449.58 cm)
Width 60 in (152.4 cm)
Height 20 in (50.8 cm)
Weight 1,200 lbs (544.1 kg)
Load Capacity 16,000 lbs (725.75 kg)
Towing Speed 5 mph (8 kph) Maximum
Turning Angle 42° Maximum
Aircraft Wheel Width 33 in (83.82 cm) Maximum

CAUTION



Before operating this disabled aircraft dolly, be sure to follow the aircraft manufacturer's instructions for proper handling and safety procedures

2.0 SAFETY INFORMATION

2.1 USAGE AND SAFETY INFORMATION

To insure safe operations please read the following statements and understand their meaning. Also refer to your equipment manufacturer's manual for other important safety information. This manual contains safety precautions which are explained below. Please read carefully.



WARNING!

Warning is used to indicate the presence of a hazard that can cause **severe personal injury, death, and/or substantial property damage** if the Warning Notice is ignored.



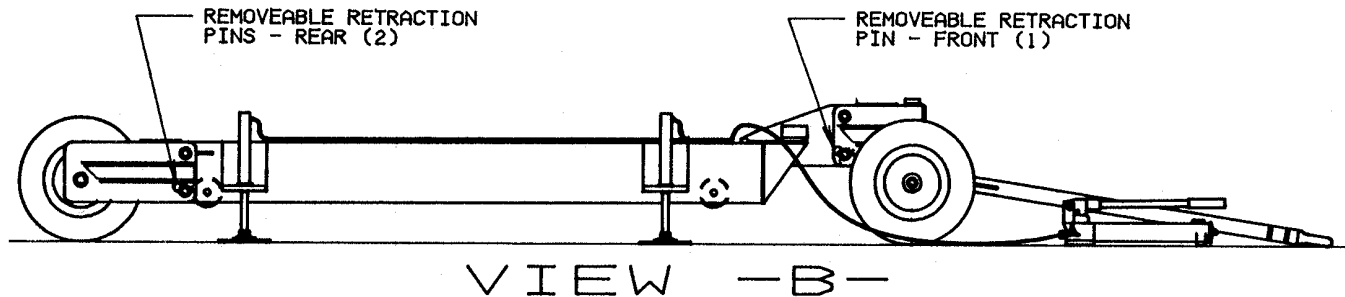
CAUTION!

Caution is used to indicate the presence of a hazard, which will or can cause **minor personal injury or property damage** if the Caution Notice is ignored.

3.0 ASSEMBLY

1. This unit is shipped with the following items loose:
 - a. Two rear pivoting wheel assemblies
 - b. One pivoting towbar truck assembly
2. All three wheel assemblies should be installed with cotter pins securing the top pivot pins, and hairpin clips securing the lower removable pins. See View B.

Be sure that all cotter pins are installed properly and split to ensure that the pin will not be removed.

**4.0 TRAINING****4.1 TRAINING REQUIREMENTS**

The employer of the operator is responsible for providing a training program sufficient for the safe operation of the unit.

4.2 TRAINING PROGRAM

The employer provided operator training program should cover safety procedures concerning use of the unit in and around the intended aircraft at the intended aircraft servicing location.

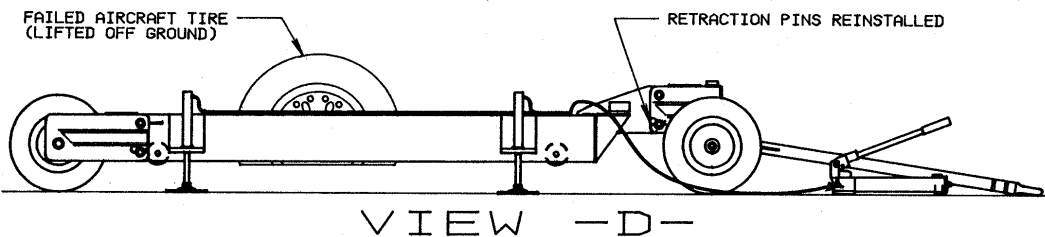
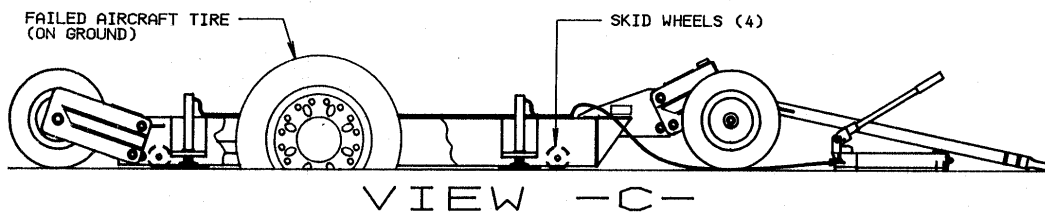
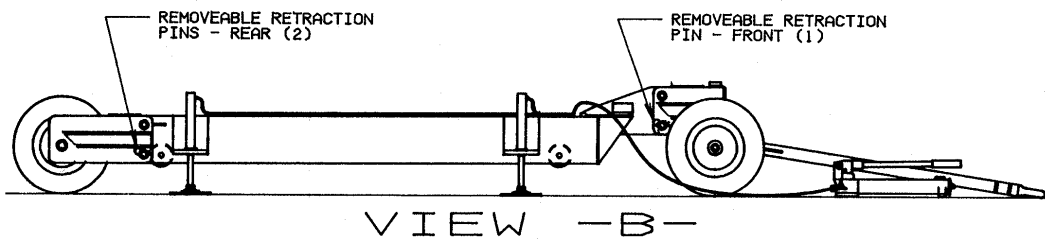
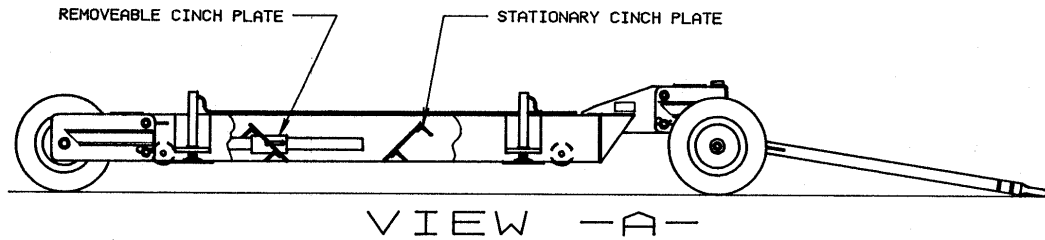
4.3 OPERATOR TRAINING

The operator training should provide the required training for safe operation of the unit.

NOTE: Maintenance and Trouble Shooting are to be performed by a skilled and trained technician.

5.0 OPERATING PROCEDURES

1. Move Disabled Aircraft Dolly to the damaged aircraft. The unit may be towed via a tow-tractor. See View A.
2. Position the unit directly forward of the failed tire/gear assembly.
3. Energize all hydraulic cylinders to lift the weight of the dolly from the main wheels.
4. Remove the sliding cinch plate and remove the three (3) retraction pins. See View B.
5. Release hydraulic pressure and lower dolly to ground. The dolly should now be on the four (4) skid casters. See View C.
6. Position dolly with the stationary cinch plate snug against the failed tire/gear. Reinstall the removable cinch plate behind the aircraft tire and hook the two (2) chain hand pullers to the sliding plate. Secure the failed tire/gear between the two cinch plates.
7. Energize all hydraulic cylinders again to lift the entire disabled aircraft, keeping the dolly level from front to back. When fully raised, carefully replace the three (3) retraction pins and secure with hairpin clips. See View D.



8. De-energize hydraulics.

NOTE: If the **NOSE GEAR** is the damaged wheel/gear assembly, tow the aircraft via the dolly towbar.

If the **MAIN GEAR** is the damaged wheel/gear assembly, tow the aircraft via the aircraft nose gear, and manually guide dolly towbar to follow tug direction.

9. Safely tow disabled aircraft via a tow tractor to a repair location.

6.0 MAINTENANCE

1. Lubricate all four wheel hubs and front truck swivel annually with general purpose grease.
2. It is suggested that the Disabled Aircraft Dolly be stored in a clean dry area when not in use.

7.0 PROVISION OF SPARES**7.1 SOURCE OF SPARE PARTS**

Spare parts may be obtained from the manufacturer:

| | |
|-------------------------|---|
| TRONAIR, Inc. | Telephone: (419) 866-6301 or 800-426-6301 |
| 1 Air Cargo Pkwy East | Fax: (419) 867-0634 |
| Swanton, Ohio 43558 USA | E-mail: sales@tronair.com |
| | Website: www.tronair.com |

For Spare Parts, Operations & Service Manuals or Service Needs:
Scan the QR code or visit Tronair.com/aftermarket

**7.2 RECOMMENDED SPARE PARTS LISTS**

Reference the following page(s) for Replacement Parts and Kits available.

Recommended Spares to be kept on hand:

- K-1500.....Kit, Rear Pivot Pin Replacement
- K-1502.....Kit, Hydraulic Cylinder Seal Replacement
- K-1504.....Kit, Front Pivot Pin Replacement
- K-1508.....Kit, Hydraulic Pump Seal Replacement

8.0 IN SERVICE SUPPORT

Contact Tronair, Inc. for technical services and information. See Section 1.3 – Manufacturer.

9.0 GUARANTEES/LIMITATION OF LIABILITY

Tronair products are warranted to be free of manufacturing or material defects for a period of one year after shipment to the original customer. This is solely limited to the repair or replacement of defective components. This warranty does not cover the following items:

- a) Parts required for normal maintenance
- b) Parts covered by a component manufacturers warranty
- c) Replacement parts have a 90-day warranty from date of shipment

If you have a problem that may require service, contact Tronair immediately. Do not attempt to repair or disassemble a product without first contacting Tronair, any action may affect warranty coverage. When you contact Tronair be prepared to provide the following information:

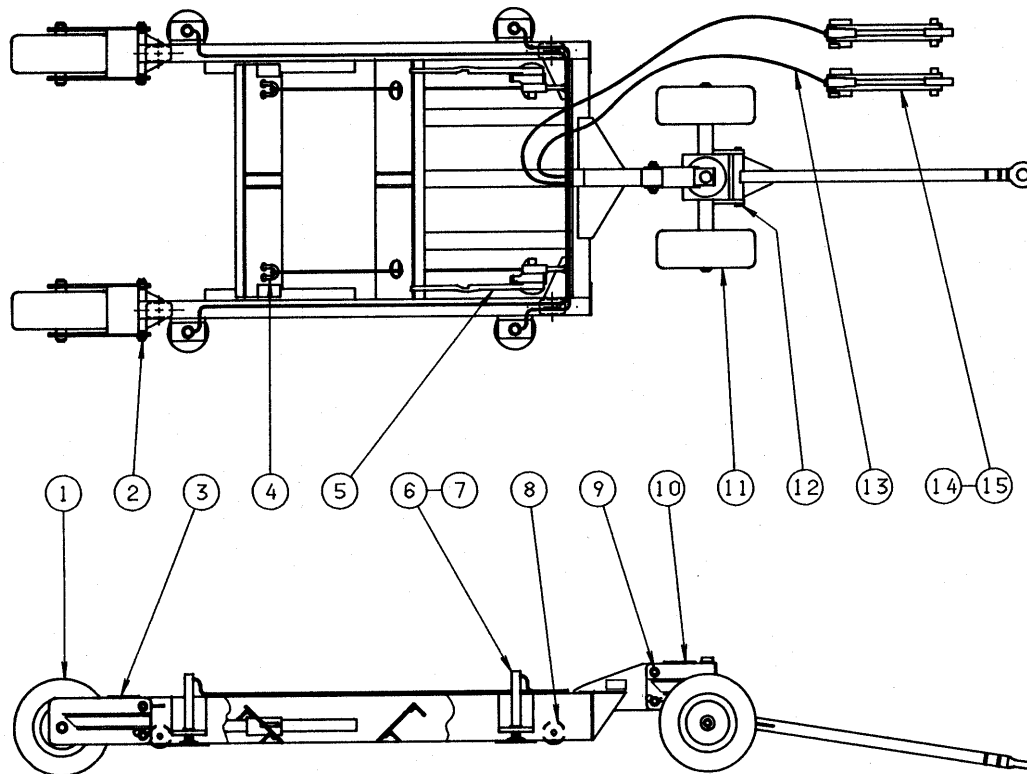
- a) Product Model Number
- b) Product Serial Number
- c) Description of the problem

If warranty coverage is approved, either replacement parts will be sent or the product will have to be returned to Tronair for repairs. If the product is to be returned, a Return Material Authorization (RMA) number will be issued for reference purposes on any shipping documents. Failure to obtain a RMA in advance of returning an item will result in a service fee. A decision on the extent of warranty coverage on returned products is reserved pending inspection at Tronair. Any shipments to Tronair must be shipped freight prepaid. Freight costs on shipments to customers will be paid by Tronair on any warranty claims only. Any unauthorized modification of the Tronair products or use of the Tronair products in violation of cautions and warnings in any manual (including updates) or safety bulletins published or delivered by Tronair will immediately void any warranty, express or implied.

The obligations of Tronair expressly stated herein are in lieu of all other warranties or conditions expressed or implied. **Any unauthorized modification of the Tronair products or use of the Tronair products in violations of cautions and warnings in any manual (including updates) or safety bulletins published or delivered by Tronair will immediately void any warranty, express or implied and Tronair disclaims any and all liability for injury (WITHOUT LIMITATION and including DEATH), loss or damage arising from or relating to such misuse.**

Parts List

When ordering replacement parts/kits, please specify model, serial number and color of your unit.



| Item | Part Number | Description | Qty |
|------|---------------|--|-----|
| 3 | Z-1875 | ASSEMBLY, REAR TRUCK | 1 |
| 4 | Z-1901 | WELDMENT, REMOVABLE SUPPORT | 1 |
| 5 | H-1592-02 | HOIST, HAND PULLER | 2 |
| 10 | Z-1916 | ASSEMBLY, FRONT TRUCK | 1 |
| 13 | TF-1066-28 | HOSE, HEAVY DUTY | 2 |
| 14 | H-2762 | PUMP, HAND | 1 |
| N/S | TF-1066-28 | HOSE, HEAVY DUTY | 1 |
| | K-1784 | KIT; REAR WHEEL REPLACEMENT; consists of: | |
| 1 | H-1590 | ASSEMBLY, WHEEL | 1 |
| | Z-6185 | HUB, HEAVY DUTY | 1 |
| | R-1257 | AXLE, REAR | 1 |
| | G-1392-125-S | RING, EXTERNAL RETAINING | 2 |
| | K-1500 | KIT, REAR PIVOT PIN REPLACEMENT; consists of: | |
| 2 | R-1256 | REAR PIVOT PIN | 2 |
| | G-1301-05 | PIN, COTTER 5/32" DIAMETER X 1 1/2" LONG | 2 |
| | G-1313-07 | COTTER, HAIRPIN | 2 |
| | K-1501 | KIT, HYDRAULIC CYLINDER REPLACEMENT; consists of: | |
| 6 | H-1594-05 | CYLINDER, HYDRAULIC | 1 |
| | TR-1264 | SLEEVE, JAM | 1 |
| | N-2021-10-S | ELBOW, MALE 45° | 1 |
| | R-1265 | UNION, THREADED | 1 |

Parts List

When ordering replacement parts/kits, please specify model, serial number and color of your unit.

| Item | Part Number | Description | Qty |
|------|---------------|---|-----|
| | K-1502 | KIT, HYDRAULIC CYLINDER SEAL REPLACEMENT; consists of: | |
| 7 | HK-1502 | SEAL KIT, HYDRAULIC CYLINDER | 1 |
| | K-1503 | KIT, WHEEL CASTER REPLACEMENT; consists of: | |
| 8 | U-1040-01 | WHEEL, FORGED STEEL | 1 |
| | G-1100-109534 | BOLT, HEX HEAD, GRADE 5, 1/2-20 X 3 1/2" LONG | 1 |
| | G-1203-1095 | JAMNUT, 1/2-20 ELASTIC | 1 |
| | K-1504 | KIT, FRONT PIVOT PIN REPLACEMENT; consists of: | |
| 9 | R-1255 | PIN, FRONT PIVOT | 2 |
| | G-1301-05 | PIN, COTTER, 5/32" DIAMETER X 1 1/2" LONG | 2 |
| | G-1313-07 | COTTER, HAIRPIN | 2 |
| | K-1505 | KIT, FRONT WHEEL REPLACEMENT; consists of: | |
| 11 | H-1590 | ASSEMBLY, WHEEL | 1 |
| | Z-6185 | HUB, HEAVY DUTY | 1 |
| | G-1250-1130N | FLATWASHER 1" NARROW | 1 |
| | G-1230-01 | NUT, AXLE, 1"-14 UNS THREAD | 1 |
| | G-1301-05 | PIN, COTTER, 5/32" DIAMETER X 1 1/2" LONG | 1 |
| | K-1506 | KIT, TOWBAR MOUNT REPLACEMENT; consists of: | |
| 12 | R-1240 | SHAFT | 1 |
| | G-1301-05 | PIN, COTTER, 5/32" DIAMETER X 1 1/2" LONG | 2 |
| | K-1508 | KIT, HYDRAULIC PUMP SEAL REPLACEMENT; consists of: | |
| 15 | HK-1508 | KIT, HYDRAULIC PUMP SEAL | 1 |