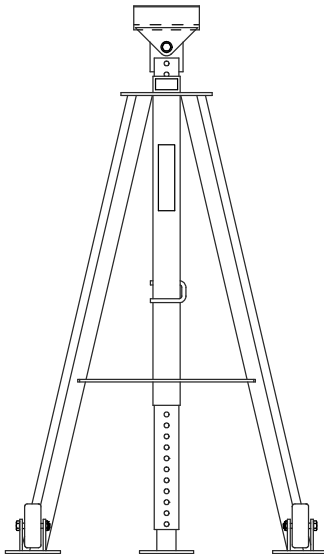




Operation & Service Manual



Model: 03-5819-0000
Tailstand (Dash 8)

08/1997 – Rev. OR

Includes Illustrated Parts Lists

1740 Eber Rd
Holland, OH 43528-9794
USA

Tronair, Inc.
www.tronair.com
Email: sales@tronair.com

Phone: (419) 866-6301
800-426-6301
Fax: (419) 867-0634

**Model: 03-5819-0000
Dash 8 Tailstand**

TABLE OF CONTENTS

	<u>PAGE</u>
1.0 Description	1
2.0 Usage	1
3.0 Assembly Instructions	1
3.1 General Information	1
3.2 Pre-Use Checks	1
3.3 Assembly Steps	1
Parts List	2

Model: 03-5819-0000
Dash 8 Tailstand

This product can not be modified without the written approval of Tronair, Inc. Any modifications done without written approval voids all warranties and releases Tronair, Inc., its suppliers, distributors, employees, or financial institutions from any liability from consequences that may occur. Only Tronair OEM replacement parts shall be used.

1.0 DESCRIPTION

This Tronair Tailstand incorporates the following quality features:

- Steel construction
- Easily maneuverable
- Vertically adjustable to within $\pm 1/4$ inch
- May be disassembled for easy replacement of parts or shipment.

2.0 USAGE

The purpose of this Tailstand is to support aircraft fuselage during maintenance.

3.0 ASSEMBLY INSTRUCTIONS

3.1 GENERAL INFORMATION

This product should be assembled and/or repaired using good workmanship practices and proper tools. Bolts and elastic stopnuts should be tightened to a torque not to exceed industry standards for Grade '5' bolts. The 3/8-24 bolts should be tightened to 35 ft-lbs and the 1/2-20 bolts tightened to 85 ft-lbs.

All replacement parts must be the same as or equal to the original parts supplied.

3.2 PRE-USE CHECKS

Refer to the Tailstand illustrated parts breakdown to identify and assure all parts are present.

Generally check over the unit to assure the tightness of all nuts, bolts and screws with extension collapsed.

3.3 ASSEMBLY STEPS

Fasten cradle assembly to extension tube with 1/2-20 x 2-3/4 inch long hex head bolt, 1/2 inch flatwashers, and 1/2-20 elastic stopnuts (supplied with unit).

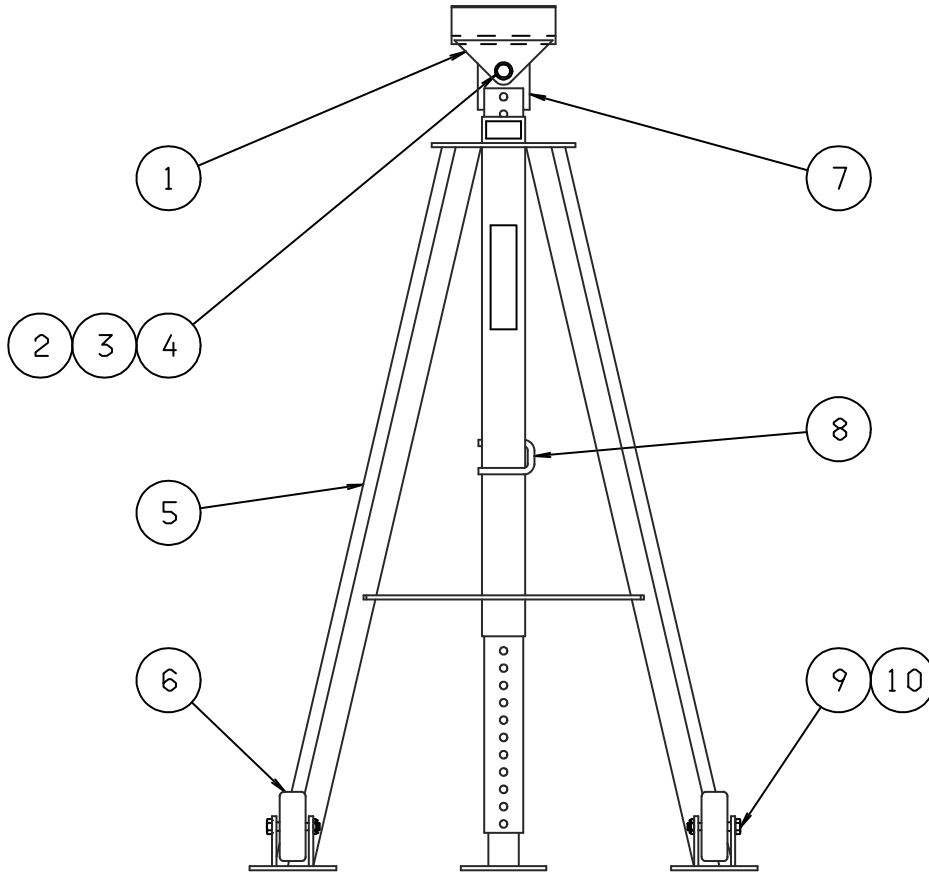
TRONAIR

08/1997 – Rev. OR

- 1 -

Parts List

****When ordering replacement parts/kits, please specify model, serial number and color of your unit.****



ITEM	PART NUMBER	DESCRIPTION	QTY
5	Z-2816-01	Weldment, Tripod	1
7	Z-2646	Extension, Center	1
8	G-1311-02	Pin, Leg Lock	1

(All other parts available in replacement kits only)

ITEM	PART NUMBER	DESCRIPTION	QTY
K-1165			
Kit, Wheel Replacement; consists of:			
6	U-1002	Wheel	1
9	G-1100-109526	Bolt, Hex Head, Grade 5, 1/2-20 x 2-3/4 long	1
10	G-1203-1095	Jamnut, 1/2-20 Elastic	1
K-1176			
Kit, Cradle Assembly Replacement; consists of:			
1	Z-1418	Assembly, Cradle	1
2	G-1100-109520	Bolt, Hex Head, Grade 5, 1/2-20	1
3	G-1202-1095	Stopnut, 1/2-20 Elastic	1
4	G-1250-1090N	Flatwasher 1/2 Narrow	2