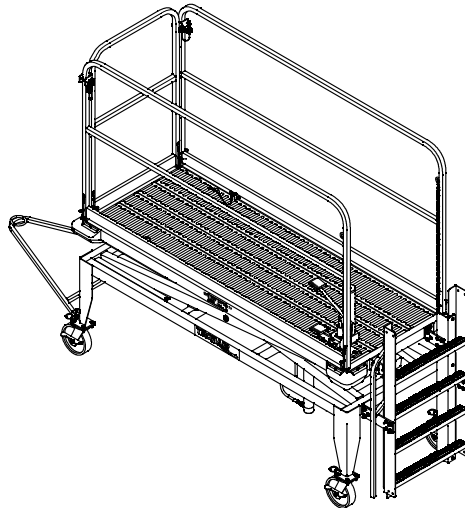




Operation & Service Manual



**Model: 04-6029-5111-A5
B4 Type Maintenance Platform
With Gate**



03/2013 – Rev. 02

Includes Illustrated Parts Lists

REVISION
01
02

DATE
01/2013
03/2013

TEXT AFFECTED
Original release
Modified Parts List



TABLE OF CONTENTS

PAGE

1.0	DESCRIPTION	1
2.0	SPECIFICATIONS	1
3.0	OPERATION INSTRUCTIONS.....	1
APPENDIX I	Declaration of Conformity	

This product can not be modified without the written approval of Tronair, Inc. Any modifications done without written approval voids all warranties and releases Tronair, Inc., its suppliers, distributors, employees, or financial institutions from any liability from consequences that may occur. Only Tronair OEM replacement parts shall be used.

1.0 DESCRIPTION

The Tronair B4 Type Maintenance Platform is shipped completely assembled and ready for use.

Some important features include:

- Mechanical Platform Stops
- Removable Side Rails
- Hydraulic Foot Pedal
- Locking Swivel Casters
- Towbar
- Self Closing Gate
- Optional Pneumatic Foot Pedal

2.0 SPECIFICATIONS

- Capacity: 500 lbs
- Work Platform Area: 3 ft x 8 ft
- Lowered Platform Height: 3½ ft
- Raised Platform Height: 7 ft

3.0 OPERATION INSTRUCTIONS

1. Check reservoir level. Fill as required with MIL-H-5606 hydraulic oil.
2. Ensure mechanical stop pins are not in the stop holes before raising the platform.
3. Raise the platform by pumping the foot pump until the desired height has been reached.
4. Install the mechanical stops. If the hole is blocked, install pins into next hole down.
5. While working on the platform, it is recommended that the safety chain and the railings remain in place.
6. When the platform is in use, it should always be locked in place with the mechanical stop pins.



CAUTION!

Never use the ladder while the platform is raised or lowering.

7. The platform is lowered by first raising it off the mechanical stop pins.
8. Remove the mechanical stop pins.
9. Actuate the relief foot valve on the pump to lower the platform.

CAUTION!



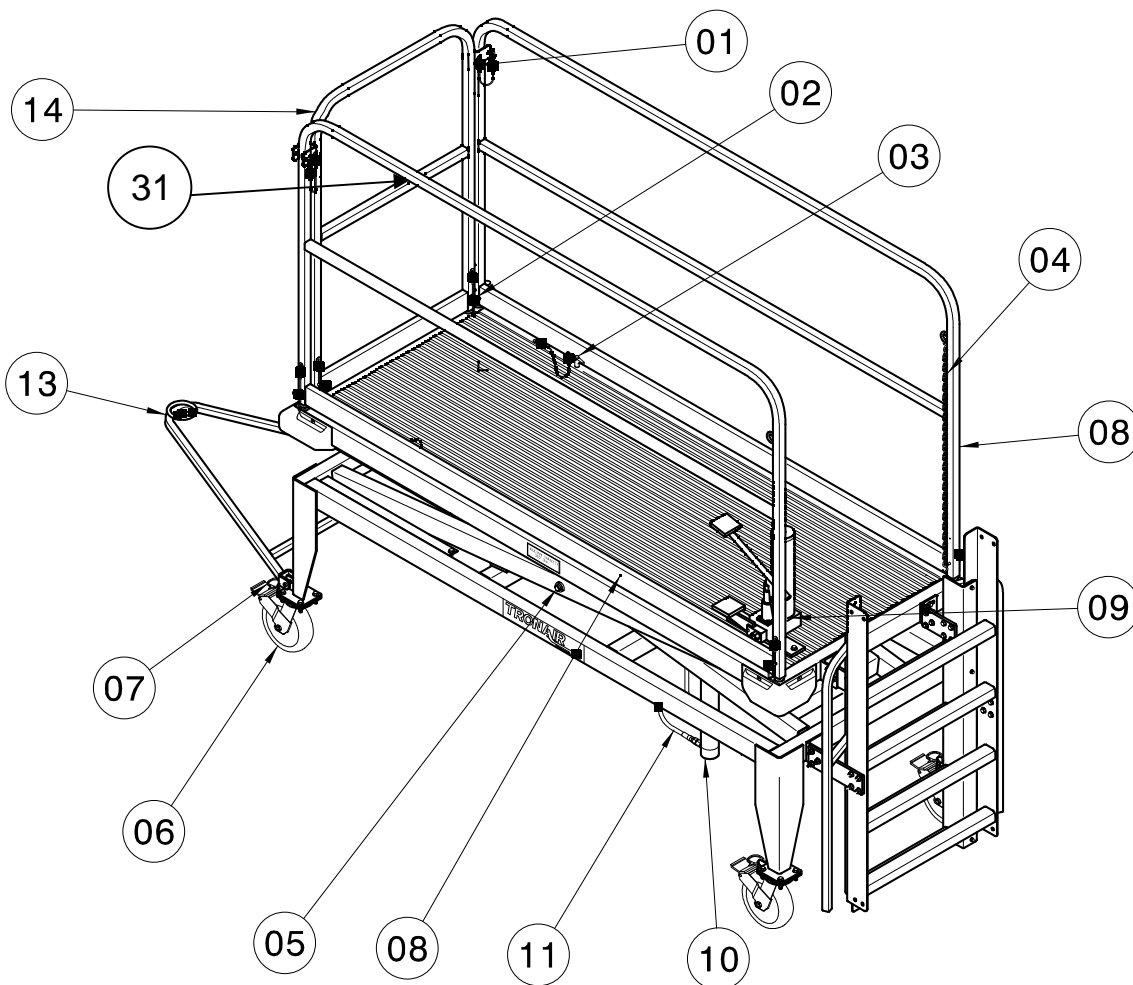
1. Always ensure the ladder and scissors area are clear of obstacles and/or personnel before lowering.
2. Never tow the platform with personnel on it.
3. If the platform experiences a sudden downward surge, the velocity fuse will be activated and the platform will immediately stop lowering. In order to reset the fuse, the relief foot valve on the pump must be depressed and released and the foot pump pedal must be quickly depressed to reset the pump. Failure to reset the fuse through the foot pump could result in pump damage and will cause the platform to no longer raise.



This page left blank intentionally.

Parts List

When ordering replacement parts/kits, please specify model, serial number and color of your unit.



ITEM	PART NUMBER	DESCRIPTION	QTY
8.....	Z-8039-01.....	Weldment, Side Rail.....	1
9.....	HC-1888-01.....	Pump, Hydraulic Foot.....	1
11.....	TF-1043-03*120.....	Assembly, Hose.....	1
13.....	Z-4771.....	Assembly, B4 Stand Towbar.....	1
14.....	Z-4402.....	Assembly, End Rail (includes Item 1, Qty. 2 & Item 2, Qty 2).....	1
31.....	Z-8037-01.....	Weldment, Side Rail.....	1
	K-2752	Kit, Ball Lok-T Replacement; consists of:	
1.....	G-1310-0420.....	Pin, Ball Lok-T, 1/4" diameter x 2" long.....	1
	G-1182-05-01.....	Screw.....	1
	H-1026*07.0.....	Assembly, Lanyard.....	1
	K-3089	Kit, Aerofast Pin Replacement; consists of:	
2.....	G-1307-0418.....	Pin, Aerofast Pin, 1/4" diameter x 1.8" long.....	1
	G-1351-04.....	Rivet, 1/8 Open-End Steel.....	1
	H-1026*07.0.....	Assembly, Lanyard.....	1
	K-2700	Kit, Ball Lok-T Replacement; consists of:	
3.....	G-1310-0855.....	Pin, Ball Lok-T, 1/2" diameter x 5-1/2" long.....	1
	G-1351-04.....	Rivet, 1/8 Open-End Steel.....	1
	H-1026*12.0.....	Assembly, Lanyard.....	1

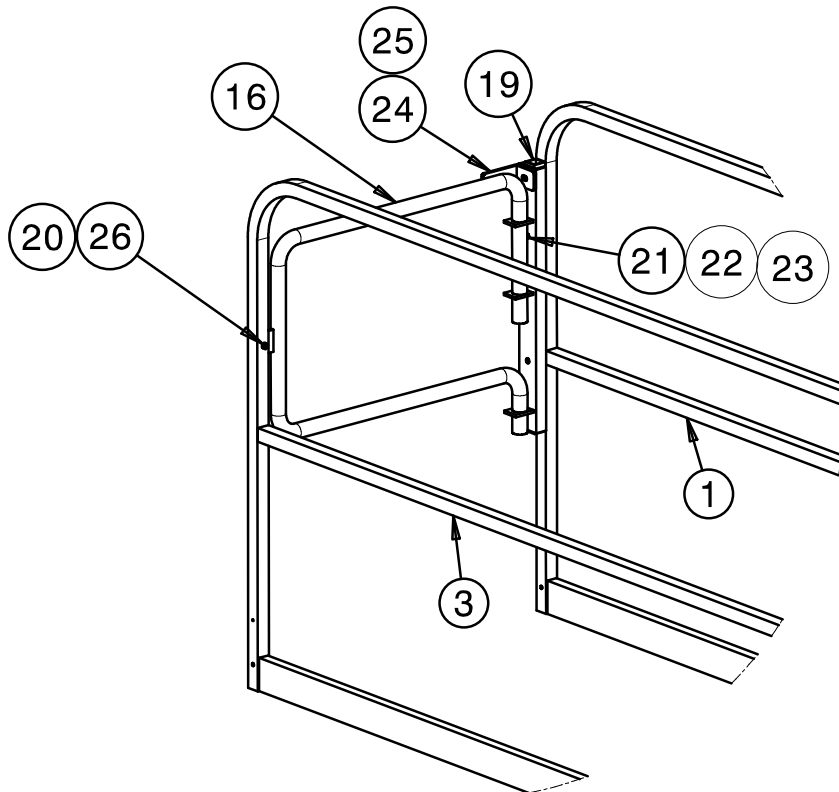
Parts List

When ordering replacement parts/kits, please specify model, serial number and color of your unit.

ITEM	PART NUMBER	DESCRIPTION	QTY
4	K-3090	Kit, Safety Chain Replacement; consists of:	
	H-1024-01*34.0	Chain, Double Loop 2/0	1
	H-1518-03	S-Hook	2
5	K-3129	Kit, Pivot Pin Replacement; consists of:	
	R-1948	Pin, Pivot	1
	G-1301-03	Pin, Cotter	2
	G-1255-11	Washer, 3/4 AN	2
6	K-3289	Kit, Caster Replacement; consists of:	
	G-1100-107014	Bolt, Hex Head, Grade 5, 3/8-16 x 1-1/2" long	4
	G-1202-1070	Stopnut, 3/8-16 Elastic	4
	G-1250-1070N	Flatwasher, 3/8 Narrow	8
	U-1085	Caster, Swivel	1
	U-1087	Lock, De-mountable Swivel	1
7	K-3290	Kit, Towbar Pivot Replacement; consists of:	
	G-1155-106220	Screw, Hex Socket Head Shoulder, 3/8" diameter x 5/16-18 x 2" long	2
	G-1202-1060	Stopnut, 5/16-18 Elastic	2
	G-1250-1060N	Flatwasher, 5/16 Narrow	2
10	K-3450	Kit, Cylinder Replacement; consists of:	
	G-1151-107214	Screw, Socket Head Cap, 3/8-24 x 1-1/2" long	4
	G-1155-110220	Screw, Hex Socket Head Shoulder, 3/4" diameter, 5/8-11 x 2" long	1
	G-1202-1100	Stopnut, 5/8-11 Elastic	1
	HC-2034-01	Cylinder, Hydraulic (Mineral Base)	1

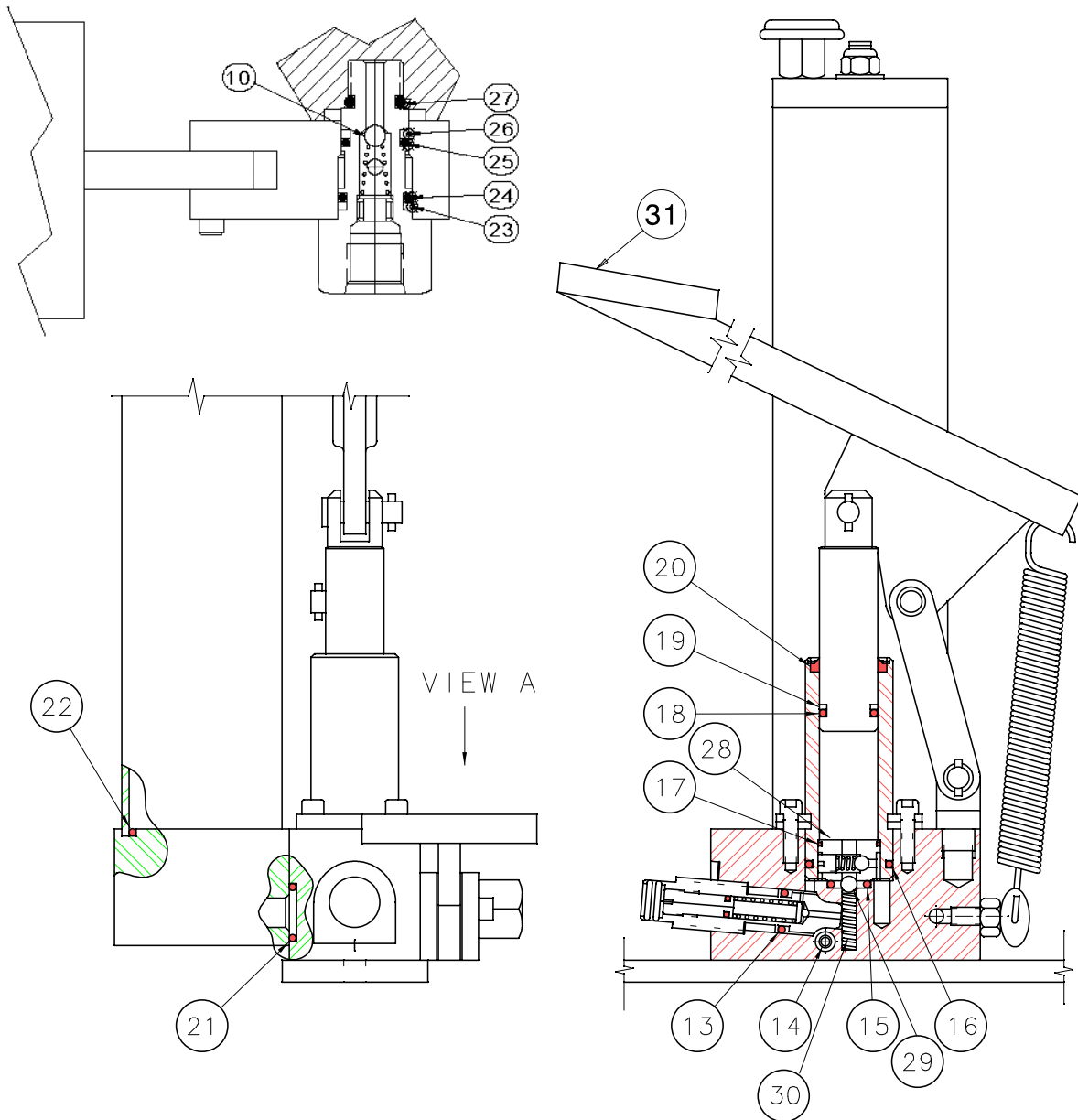
Parts List

When ordering replacement parts/kits, please specify model, serial number and color of your unit.



ITEM	PART NUMBER	DESCRIPTION	QTY
1	Z-8037-01	Weldment, Side Rail	1
3	Z-8039-01	Weldment, Side Rail	1
	K-4746	Kit, Gate Replacement; consists of:	
16	H-3622	Gate, Work Platform	1
19	TS-2443-01	Tube, Gate Support	1
20	G-1351-04	Rivet, Open End Steel	1
21	G-1100-107034	Bolt, HH GR 5 3/8- 16	2
22	G-1202-1070	ESN, 3/8- 16	3
23	G-1250-1070N	Flatwasher, 3/8Narrow	6
24	Z-8108-01	Bracket, End Rail Stop	1
25	G-1100-107036	Bolt, HH GR 5 3/8- 16	1
26	H-1547-01	Bumper, Rubber	1

Parts List - Replacement Pump Seal Kit

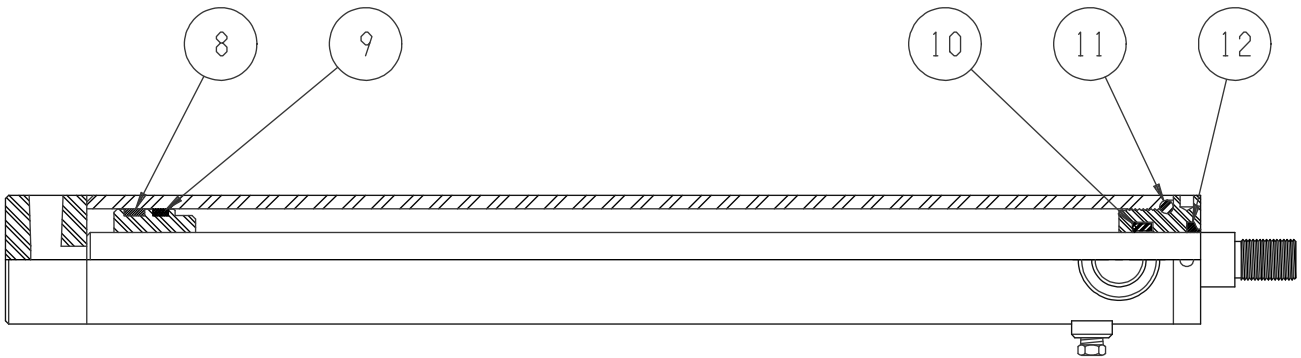


ITEM	PART NUMBER	DESCRIPTION	QTY
31	H-3046	Lever, Foot Pedal	1

Parts List - Replacement Pump Seal Kit

ITEM	PART NUMBER	DESCRIPTION	QTY
	K-4361	Kit, Pump Seal Replacement; consists of:	
10.....		Ball, Inlet Check	2
13.....		O-ring, Release Screw	1
14.....		O-ring, Outlet.....	1
15.....		O-ring, Outlet Check.....	1
16.....		O-ring, Tube Seal	1
17.....		O-ring, Valve Body	1
18.....		O-ring, Piston	1
19.....		Backup Ring, Piston	1
20.....		Wiper, Rod	1
21.....		O-ring, Reservoir Mount	1
22.....		O-ring, Reservoir Seal.....	1
23.....		Backup Ring, Piston	1
24.....		O-ring, Piston	1
25.....		O-ring, Piston	1
26.....		Backup Ring, Piston	1
27.....		O-ring, Seal	1
28.....		Valve Body	1
29.....		Ball, Outlet Check.....	1
30.....		Spring, Outlet Check	1

Parts List - Replacement Cylinder Seal Kit



ITEM	PART NUMBER	DESCRIPTION	QTY
	K-3291	Kit, Cylinder Seals Replacement; consists of:	
8.....		Ring, Seal.....	1
9.....		Seal, PSP.....	1
10.....		Polypak.....	1
11.....		O-ring.....	1
12.....		Wiper, Rod.....	1



APPENDIX - I

**Declaration
of
Conformity**



DECLARATION of CONFORMITY

The design, development and manufacture is in accordance with European Community guidelines

B4 Type Maintenance Platform
04-6029-5111-A5

Relevant provisions complied with by the machinery:
2006/42/EC

Relevant standards complied with by the machinery:
BS EN 1915-1:2001
pr EN 12312-8:1997

Identification of person empowered to sign on behalf of the manufacturer:

A handwritten signature in black ink that reads "David L. Kidd". The signature is written in a cursive style and is positioned above a horizontal line.

Quality Assurance Representative