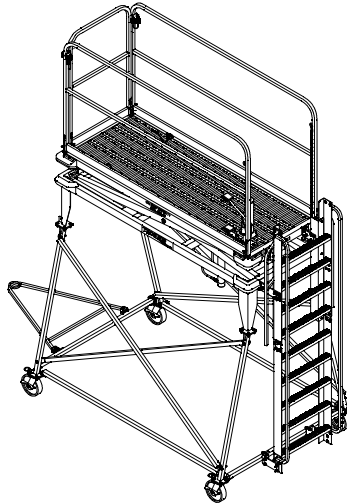




Operation & Service Manual



**Models: 04-6030-5111-A2
B5 Type Maintenance Platform
With Gate**



03/2013 – Rev. 02

Includes Illustrated Parts Lists

1740 Eber Rd
Holland, OH 43528-9794
USA

Tronair, Inc.
www.tronair.com
Email: sales@tronair.com

Phone: (419) 866-6301
800-426-6301
Fax: (419) 867-0634

REVISION
01
02

DATE
01/2013
03/2013

TEXT AFFECTED
Original release
Modified Parts List



TABLE OF CONTENTS

PAGE

1.0	SPECIFICATIONS	1
1.1	FEATURES	1
2.0	ASSEMBLY INSTRUCTIONS	1
3.0	OPERATION INSTRUCTIONS	2
4.0	PARTS LIST	2

APPENDIX I Declaration of Conformity

This product can not be modified without the written approval of Tronair, Inc. Any modifications done without written approval voids all warranties and releases Tronair, Inc., its suppliers, distributors, employees, or financial institutions from any liability from consequences that may occur. Only Tronair OEM replacement parts shall be used.

1.0 SPECIFICATIONS

Capacity:	500 lbs
Work Platform Area:	3 ft x 8 ft
Lowered Platform Height:	8.5 ft
Raised Platform Height:	12 ft

1.1 FEATURES

- Mechanical Platform Stops
- Removable Side Rails
- Hydraulic Foot Pedal
- Locking Swivel Casters
- Towbar
- Self Closing Gate
- Optional Pneumatic Foot Pedal

2.0 ASSEMBLY INSTRUCTIONS

1. Raise work platform assembly approximately 90 inches off the floor.
2. Install platform extensions to the bottom of platform assembly using $\frac{3}{8}$ -16 x 1½ inch long bolts (See **Figure 1**).
NOTE: DO NOT TIGHTEN BOLTS.

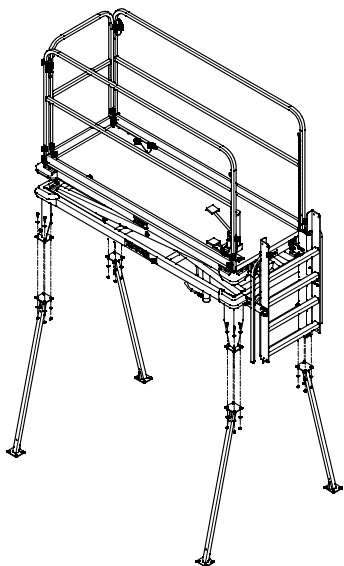


FIGURE 1

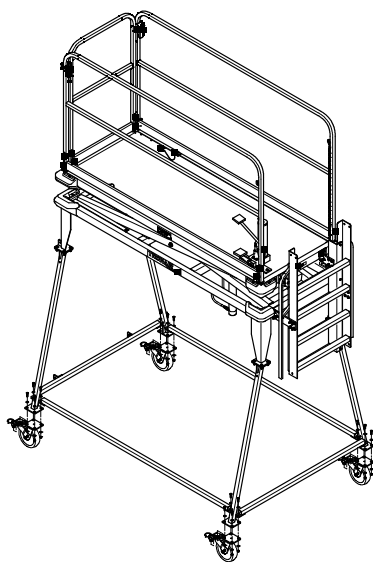


FIGURE 2

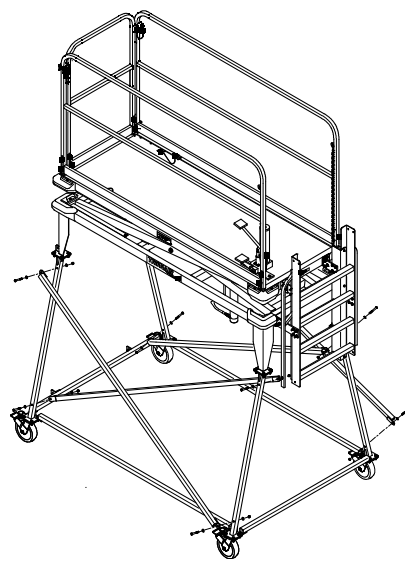


FIGURE 3

3. Install extension braces, casters and swivel locks using $\frac{3}{8}$ -16 x 1½ inch long bolts. (See **Figure 2**)
NOTE: DO NOT TIGHTEN BOLTS.
4. Install cross braces using $\frac{3}{8}$ -16 x 3 inch long bolts (See **Figure 3**).
5. Tighten all bolts; torque to 25 in-lbs.

2.0 ASSEMBLY INSTRUCTIONS *(continued)*

6. Install the ladder extension using the splice plates and $\frac{3}{8}$ -16 x 1½ inch long bolts. Assemble the extension handle using $\frac{3}{8}$ -16 x 1½ inch long bolts and secure the ladder to the extension brace using the U-bolt, angle and $\frac{3}{8}$ -16 x 1½-inch long bolts. (See **Figure 4**).
7. Install the towbar using $\frac{3}{8}$ inch diameter shoulder bolts (See **Figure 5**).

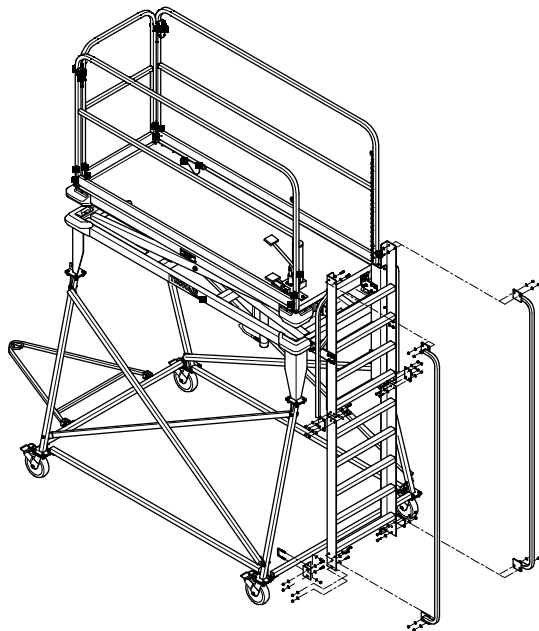


FIGURE 4

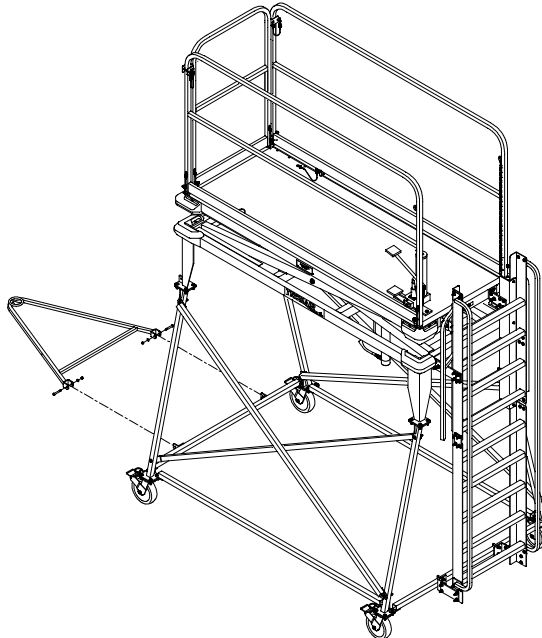


FIGURE 5

3.0 OPERATION INSTRUCTIONS

1. Check reservoir level; fill as required with MIL-H-5606 hydraulic oil.
2. Ensure mechanical stop pins are not in the stop holes before raising the platform.
3. Raise the platform by pumping the foot pump until the desired height has been reached.
4. Install the mechanical stops. If the hole is blocked, install pins into next hole down.
5. While working on the platform, it is recommended that the safety chain and the railings remain in place.
6. When the platform is in use, it should always be locked in place with the mechanical stop pins.



CAUTION!

Never use the ladder while the platform is raised or lowering.

7. The platform is lowered by first raising it off the mechanical stop pins.
8. Remove the mechanical stop pins.
9. Actuate the relief foot valve on the pump to lower the platform.



CAUTION!

1. Always ensure the ladder and scissors area are clear of obstacles and/or personnel before lowering.
2. Never tow the platform with personnel on it.
3. If the platform experiences a sudden downward surge, the velocity fuse will be activated and the platform will immediately stop lowering. In order to reset the fuse, the relief foot valve on the pump must be depressed and released and the foot pump pedal must be quickly depressed to reset the pump. Failure to reset the fuse through the foot pump could result in pump damage and will cause the platform to no longer raise.

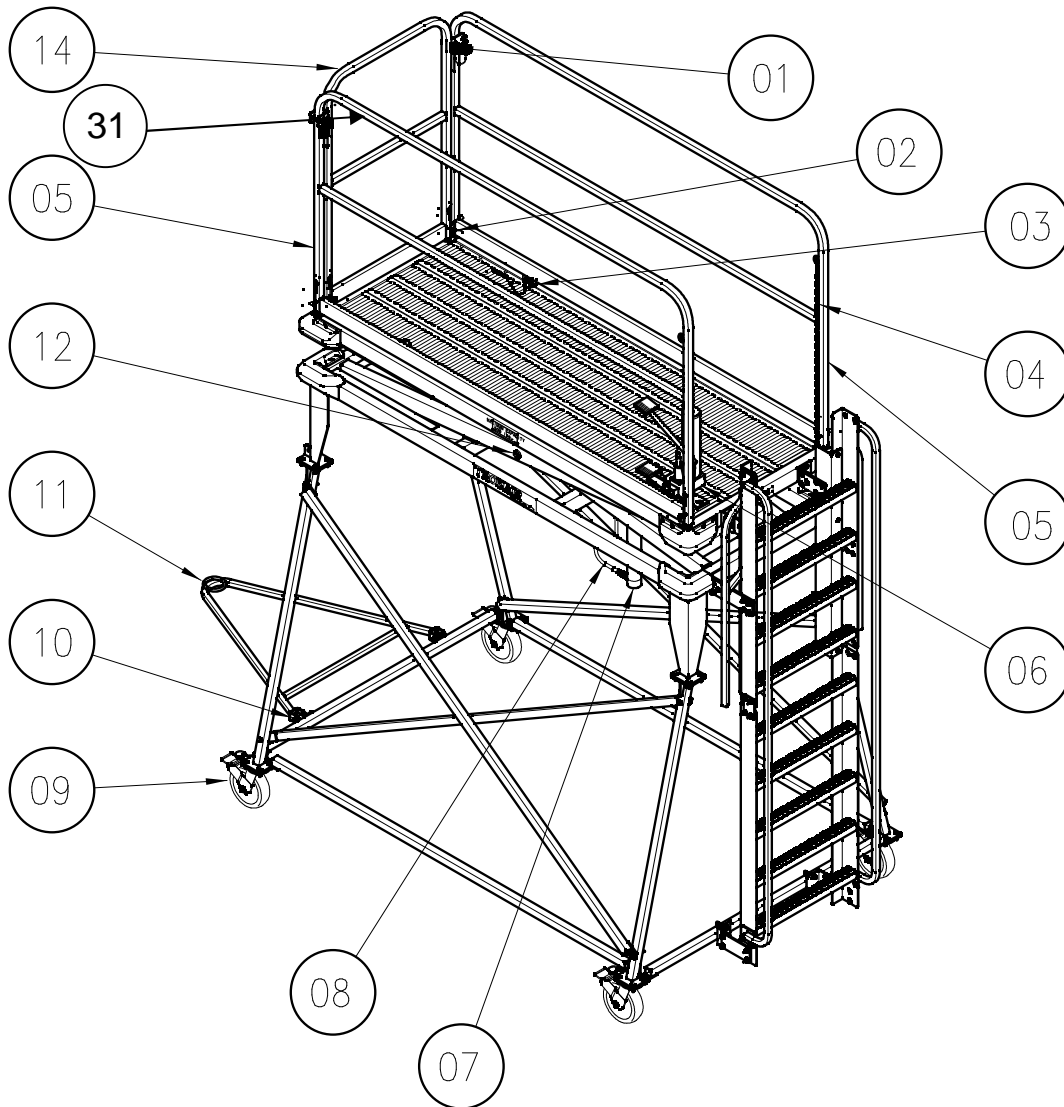
4.0 PARTS LIST

Reference following pages for ordering information of Replacement Parts and Kits.

When ordering Replacement Parts/Kits, please specify Model & Serial Number, as well as the **color** of your product.

Parts List

When ordering replacement parts/kits, please specify model, serial number and color of your unit.



ITEM	PART NUMBER	DESCRIPTION	QTY
5.....	Z-8039-01.....	Weldment, Side Rail.....	1
6.....	HC-1888-02.....	Pump, Hydraulic Foot.....	1
8.....	TF-1043-03*120.....	Assembly, Hose.....	1
11.....	Z-4771.....	Assembly, B4 Stand Towbar.....	1
14.....	Z-4402.....	Assembly, End Rail (includes Item 1, Qty. 2 & Item 2, Qty 2).....	1
31.....	Z-8037-01.....	Weldment, Side Rail.....	1

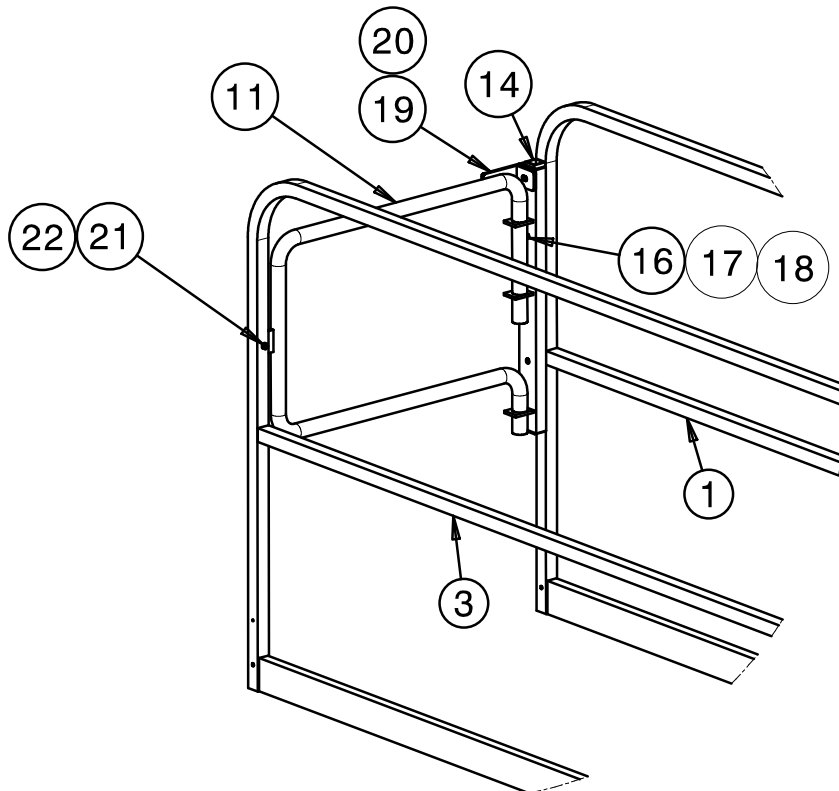
Parts List

When ordering replacement parts/kits, please specify model, serial number and color of your unit.

ITEM	PART NUMBER	DESCRIPTION	QTY
1	K-2752	Kit, Ball Lok-T Replacement; consists of:	
	G-1310-0420	Pin, Ball Lok-T, ¼" diameter x 2" long	1
	G-1182-05-01	Screw	1
	H-1026*07.0	Assembly, Lanyard	1
2	K-3089	Kit, Aerofast Pin Replacement; consists of:	
	G-1307-0418	Pin, Aerofast Pin, ¼" diameter x 1.8" long	1
	G-1351-04	Rivet	1
	H-1026*07.0	Assembly, Lanyard	1
3	K-2700	Kit, Ball Lok-T Replacement; consists of:	
	G-1310-0855	Pin, Ball Lok-T, ½" diameter x 5 ½" long	1
	G-1351-04	Rivet	1
	H-1026*12.0	Assembly, Lanyard	1
4	K-3090	Kit, Safety Chain Replacement; consists of:	
	H-1024-01*34.0	Chain, Double Loop 2/0	1
	H-1518-03	S-Hook	2
7	K-3450	Kit, Cylinder Replacement; consists of:	
	HC-2034-01	Cylinder, Hydraulic (Mineral Base)	1
	G-1151-107214	Screw, Socket Head Cap, ¾ -24 x 1 ½" long	4
	G-1155-110220	Screw, Hex Socket Head Shoulder ¾" diameter, 5/8 -11 x 2" long	1
	G-1202-1100	Stopnut, 5/8 -11 Elastic	1
9	K-3289	Kit, Caster Replacement; consists of:	
	U-1085	Caster, Swivel	1
	U-1087	Lock, Demountable Swivel	1
	G-1100-107014	Bolt, Hex Head, Grade 5, ¾ -16 x 1 ½" long	4
	G-1202-1070	Stopnut, ¾ -16 Elastic	4
	G-1250-1070N	Flatwasher, ¾ Narrow	8
10	K-3290	Kit, Towbar Pivot Replacement; consists of:	
	G-1155-106220	Screw, Hex Socket Head Shoulder ¾" diameter x 5/16 -18 x 2" long	2
	G-1202-1060	Stopnut, 5/16 -18 Elastic	2
	G-1250-1060N	Flatwasher, 5/16 Narrow	2
12	K-3129	Kit, Pivot Pin Replacement; consists of:	
	R-1948	Pin, Pivot	1
	G-1301-03	Pin, Cotter	2
	G-1255-11	Washer, ¾ AN	2

Parts List

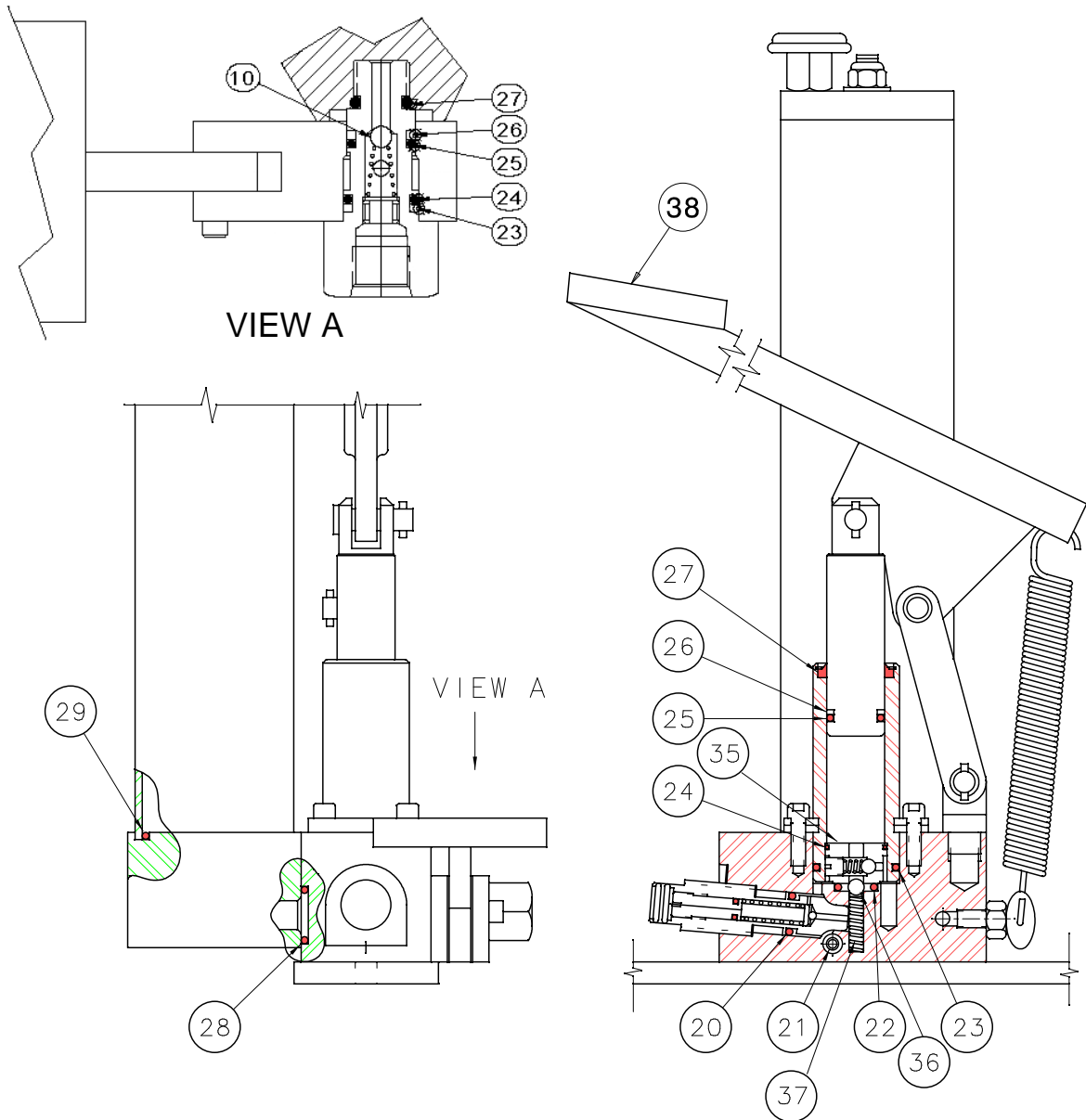
When ordering replacement parts/kits, please specify model, serial number and color of your unit.



ITEM	PART NUMBER	DESCRIPTION	QTY
1	Z-8037-01	Weldment, Side Rail	1
3	Z-8039-01	Weldment, Side Rail	1
	K-4746	Kit, Gate Replacement; consists of:	
11	H-3622	Gate, Work Platform	1
14	TS-2443-01	Tube, Gate Support	1
16	G-1100-107034	Bolt, HH GR 5 3/8- 16	2
17	G-1202-1070	ESN, 3/8- 16	3
18	G-1250-1070N	Flatwasher, 3/8 Narrow	6
19	Z-8108-01	Bracket, End Rail Stop	1
20	G-1100-107036	Bolt, HH GR 5 3/8- 16	1
21	H-1547-01	Bumper, Rubber	1
22	G-1351-04	Rivet, Open End Steel	1

Parts List

When ordering replacement parts/kits, please specify model, serial number and color of your unit.



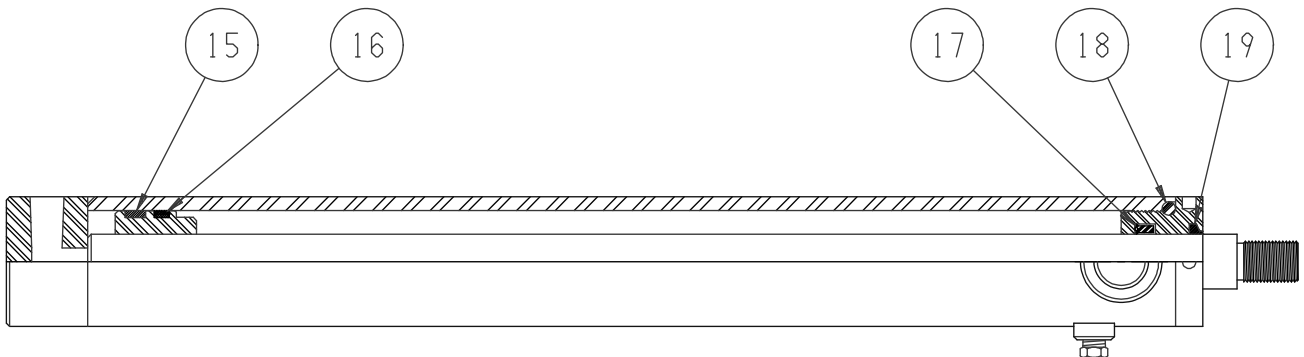
ITEM	PART NUMBER	DESCRIPTION	QTY
38.....	H-3046.....	Lever, Foot Pedal.....	1

Parts List - Replacement Pump Seal Kit

ITEM	PART NUMBER	DESCRIPTION	QTY
	K-4361	Kit, Pump Seal Replacement; consists of:	
10.....		Ball, Inlet Check	2
20.....		O-ring, Release Screw	1
21.....		O-ring, Outlet.....	1
22.....		O-ring, Outlet Check.....	1
23.....		O-ring, Tube Seal	1
24.....		O-ring, Valve Body	1
25.....		O-ring, Piston	1
26.....		Backup Ring, Piston	1
27.....		Wiper, Rod	1
28.....		O-ring, Reservoir Mount	1
29.....		O-ring, Reservoir Seal.....	1
30.....		Backup Ring, Piston	1
31.....		O-ring, Piston	1
32.....		O-ring, Piston	1
33.....		Backup Ring, Piston	1
34.....		O-ring, Seal	1
35.....		Valve Body	1
36.....		Ball, Outlet Check.....	1
37.....		Spring, Outlet Check	1

Parts List - Replacement Cylinder Seal Kit

When ordering replacement parts/kits, please specify model, serial number and color of your unit.



ITEM	PART NUMBER	DESCRIPTION	QTY
	K-3291	Kit, Cylinder Seals Replacement; consists of:	
15.....		Ring, Seal.....	1
16.....		Seal, PSP.....	1
17.....		Polypak.....	1
18.....		O-ring.....	1
19.....		Wiper, Rod.....	1



APPENDIX - I

**Declaration
of
Conformity**



DECLARATION of CONFORMITY

The design, development and manufacture is in accordance with European Community guidelines

B5 Type Maintenance Platforms
04-6030-5111-A2

Relevant provisions complied with by the machinery:
2006/42/EC

Relevant standards complied with by the machinery:
BS EN 1915-1:2001
pr EN 12312-8:1997

Identification of person empowered to sign on behalf of the manufacturer:

A handwritten signature in black ink that reads "David L. Kidd". The signature is written in a cursive style and is positioned above a horizontal line.

Quality Assurance Representative