

**Model: 04-6035-1100
Maintenance Stand**

06/2024 – Rev. 03

**For Spare Parts, Operations & Service Manuals or Service Needs
Scan the QR code or visit Tronair.com/aftermarket**



The Tronair Group of Companies: Tronair | EBIS | Columbus Jack | Eagle | DAE | Malabar International

Tronair, Inc.
1 Air Cargo Pkwy East
Swanton, OH 43558

Phone: (419) 866-6301 | 800-426-6301
Web: www.tronair.com
Email: sales@tronair.com

REVISION	DATE	TEXT AFFECTED
01	06/2009	Original Release
02	10/2010	Major Revision
03	06/2024	Major revision

TABLE OF CONTENTS

PAGE

1.0 PRODUCT INFORMATION	1
1.1 DESCRIPTION	1
1.2 MODEL & SERIAL NUMBER	1
1.3 MANUFACTURER.....	1
2.0 SAFETY INFORMATION.....	1
2.1 USAGE AND SAFETY INFORMATION.....	1
3.0 TRAINING.....	1
3.1 TRAINING REQUIREMENTS.....	1
3.2 TRAINING PROGRAM.....	1
3.3 OPERATOR TRAINING.....	1
4.0 PREPARATION FOR USE	1
5.0 MAINTENANCE.....	2
5.1 MAINTENANCE SCHEDULE	2
5.2 LOAD TESTING	2
6.0 PROVISION OF SPARES	3
6.1 SOURCE OF SPARE PARTS	3
6.2 RECOMMENDED SPARE PARTS LISTS.....	3
7.0 IN SERVICE SUPPORT	3
8.0 GUARANTEES/LIMITATION OF LIABILITY.....	3

This product can not be modified without the written approval of Tronair, Inc. Any modifications done without written approval voids all warranties and releases Tronair, Inc., its suppliers, distributors, employees, or financial institutions from any liability from consequences that may occur. Only Tronair OEM replacement parts shall be used.

1.0 PRODUCT INFORMATION

1.1 DESCRIPTION

This manual contains instructions for operating and maintaining 04-6035-1100 Maintenance Stand. Illustrated breakdowns of all parts used in the maintenance stand are included for identification of parts and parts ordering information.

Capacity 750 lbs (340 kg)

1.2 MODEL & SERIAL NUMBER

Reference nameplate on unit

1.3 MANUFACTURER

TRONAIR, Inc.

1 Air Cargo Pkwy East
Swanton, Ohio 43558 USA

Telephone: (419) 866-6301 or 800-426-6301

Fax: (419) 867-0634

E-mail: sales@tronair.com

Website: www.tronair.com

2.0 SAFETY INFORMATION

2.1 USAGE AND SAFETY INFORMATION

To ensure safe operations please read the following statements and understand their meaning. Also refer to your equipment manufacturer's manual for other important safety information. This manual contains safety precautions which are explained below. Please read carefully.



WARNING!

Warning is used to indicate the presence of a hazard that can cause **severe personal injury, death, and/or substantial property damage** if the Warning Notice is ignored.



CAUTION!

Caution is used to indicate the presence of a hazard, which will or can cause **minor personal injury or property damage** if the Caution Notice is ignored.

3.0 TRAINING

3.1 TRAINING REQUIREMENTS

The employer of the operator is responsible for providing a training program sufficient for the safe operation of the unit.

3.2 TRAINING PROGRAM

The employer provided operator training program should cover safety procedures concerning use of the unit in and around the intended aircraft at the intended aircraft servicing location.

3.3 OPERATOR TRAINING

The operator training should provide the required training for safe operation of the unit.

NOTE: Maintenance and Trouble Shooting are to be performed by a skilled and trained technician.

4.0 PREPARATION FOR USE

The maintenance stand has been lubricated and adjusted at the factory and no additional preparation is required. A general inspection should be made to determine if any damage was sustained in transit. If any damage was sustained the transportation company should be notified immediately.

5.0 MAINTENANCE

5.1 MAINTENANCE SCHEDULE

TASK	Daily	3 Months	6 Months	Annually	5 Years *
Check for loose or missing hardware. Tighten or replace before use	X				
Check frame for damage. If damage is found, stand shall be removed from service until repaired	X				
Oil pivot points - apply a few drops of oil to ungreased pivot points to prevent binding		X			
Grease pivot points - Apply EP2 lithium grease or equivalent to all major pivot points using provided zerk fittings			X		
Remove wheel hubs and repack with EP2 lithium grease or equivalent				X	
Check hydraulic level - level to be no more than 1.5" down from top of hydraulic tank with stand in lowest position. If necessary, fill with a high performance anti-wear hydraulic oil. Tronair recommends Mobil DTE 10 Excel 15				X	
Replace hydraulic filter element				X	
Inspect step attachment bolts for wear and/or deformation. Replace as necessary.				x	
Perform load test using 125% of rated load (938 lbs / 425 kg). See load test instructions below				X	
Perform load test using 200% of rated load (1,500 lbs / 680 kg). See load test instructions below					X

*and after major repairs due to damage

5.2 LOAD TESTING

See Maintenance Schedule for recommended load and frequency.

With platform at lowest height, place test load on the center of the platform. The load should be tethered in a way that prevents dangerous shifting of the weight in the event of failure of the stand. Observe the entire stand for any material or weld failures. If damage is found, stand shall be removed from service until repaired and retested.

6.0 PROVISION OF SPARES

6.1 SOURCE OF SPARE PARTS

Spare parts may be obtained from the manufacturer:

TRONAIR , Inc.	Telephone: (419) 866-6301 or 800-426-6301
1 Air Cargo Pkwy East	Fax: (419) 867-0634
Swanton, Ohio 43558 USA	E-mail: sales@tronair.com
	Website: www.tronair.com



For Spare Parts, Operations & Service Manuals or Service Needs:
Scan the QR code or visit Tronair.com/aftermarket

6.2 RECOMMENDED SPARE PARTS LISTS

Reference the following page(s) for Replacement Parts and Kits available.

Recommended Spares:
1502749 Filter Assembly

7.0 IN SERVICE SUPPORT

Contact Tronair, Inc. for technical services and information. See Section 1.3 – Manufacturer.

8.0 GUARANTEES/LIMITATION OF LIABILITY

Tronair products are warranted to be free of manufacturing or material defects for a period of one year after shipment to the original customer. This is solely limited to the repair or replacement of defective components. This warranty does not cover the following items:

- a) Parts required for normal maintenance
- b) Parts covered by a component manufacturers warranty
- c) Replacement parts have a 90-day warranty from date of shipment

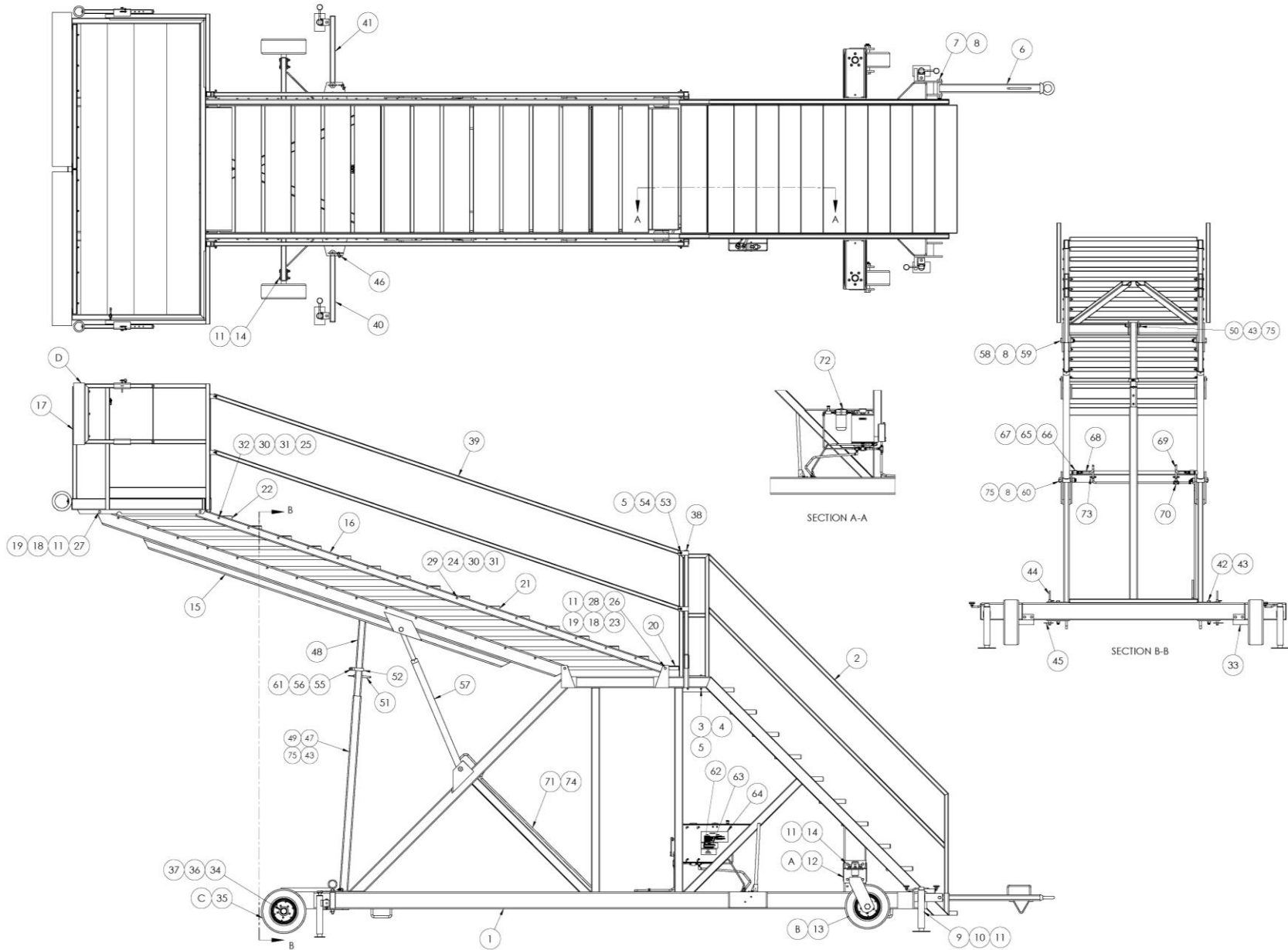
If you have a problem that may require service, contact Tronair immediately. Do not attempt to repair or disassemble a product without first contacting Tronair, any action may affect warranty coverage. When you contact Tronair be prepared to provide the following information:

- a) Product Model Number
- b) Product Serial Number
- c) Description of the problem

If warranty coverage is approved, either replacement parts will be sent or the product will have to be returned to Tronair for repairs. If the product is to be returned, a Return Material Authorization (RMA) number will be issued for reference purposes on any shipping documents. Failure to obtain a RMA in advance of returning an item will result in a service fee. A decision on the extent of warranty coverage on returned products is reserved pending inspection at Tronair. Any shipments to Tronair must be shipped freight prepaid. Freight costs on shipments to customers will be paid by Tronair on any warranty claims only. Any unauthorized modification of the Tronair products or use of the Tronair products in violation of cautions and warnings in any manual (including updates) or safety bulletins published or delivered by Tronair will immediately void any warranty, express or implied.

The obligations of Tronair expressly stated herein are in lieu of all other warranties or conditions expressed or implied. **Any unauthorized modification of the Tronair products or use of the Tronair products in violations of cautions and warnings in any manual (including updates) or safety bulletins published or delivered by Tronair will immediately void any warranty, express or implied and Tronair disclaims any and all liability for injury (WITHOUT LIMITATION and including DEATH), loss or damage arising from or relating to such misuse.**

Parts List Illustration



Parts List

When ordering replacement parts/kits, please specify model, serial number and color of your unit.

Item	Part Number	Description	Qty
1	15W5210	Base Frame Weldment	1
2	15W5213	Lower Handrail Weldment	2
3	1501375	5/16 – 24 x 5" LG CS	4
4	150251	5/16 Washer	4
5	150315	5/16 – 24 Nylok Nut	12
6	15W3839	Towbar Weldment	1
7	1503063	1-14 x 6 ½ LG CS	1
8	150597	1 – 14 Nylok Nut	5
9	1505873	Jack	4
10	150625	½ - 20 x 3 ¼ LG CS	4
11	150586	½ - 20 Nylok Nut	34
12	15W5211	Caster Mount	2
13	15F2700	Caster Assembly	2
14	1501344	½ - 20 UNF x 3 ½ LG CS	12
15	15W5216	Lower Lift Rail	1
16	15W5217	Lift Rail	2
17	15F2684	4' x 9' Platform Assembly	1
18	15L14428	Lift Rail Spacer	8
19	1505866	Grease Zerk 45°	8
20	15W5218	Step Weldment	1
21	15W5219	Step Weldment	14
22	15W5504	Step Weldment	1
23	15L21059	Lower Step Spacer	4
24	15L21060	Bushing	56
25	15L22068	Step Spacer	4
26	150825	½ - 20 x 5 ½ LG CS	4
27	150323	½ - 20 x 4 ½ LG CS	4
28	150255	½ Washer	2
29	150753	3/8 – 24 x 3 ¼ LG CS	56
30	150246	Wrought Washer	60
31	150308	3/8 – 24 UNF Nylok Nut	60
32	150150	3/8 – 24 UNF x 4 LG CS	4
33	15W5209	Axle Weldment	2
34	1504668	Hub Assembly	2
35	15F1892	Tire & Wheel Assembly	2
36	1504399	1-14 Slotted Nut	2
37	1502258	1/8 x 2 LG Cotter Key	2
38	15W5215	Top Post	4
39	15L21054	Handrail Tube	4
40	15W5365	Stabilizer Tube Weldment RH	1
41	15W5430	Stabilizer Tube Weldment LH	1
42	1505526	¾ - 16 x 8 LG CS	2
43	150320	¾ - 16 Nylok Nut	4

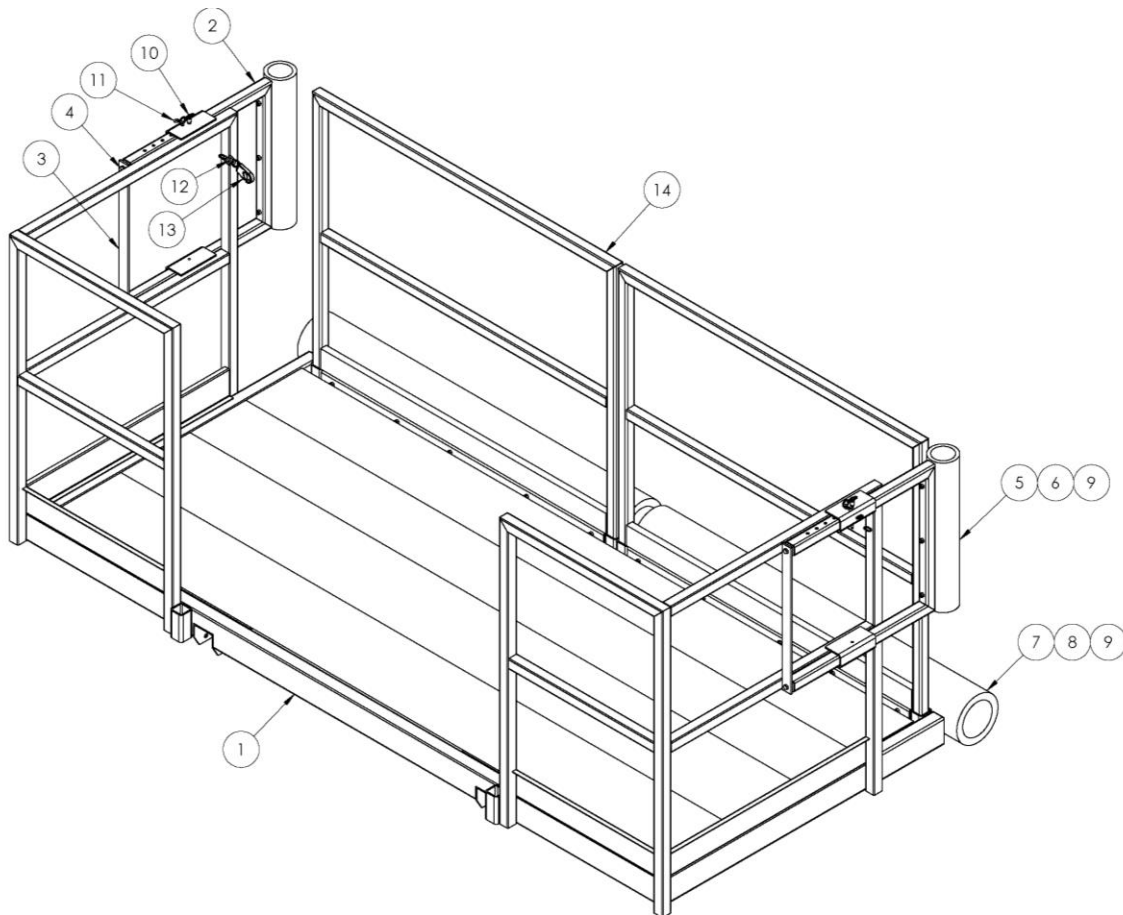
Parts List

When ordering replacement parts/kits, please specify model, serial number and color of your unit.

Item	Part Number	Description	Qty
44	15W5366	Outrigger Pin	2
45	150276	Hair Pin	2
46	1504006	S-Hook	2
47	15W5120	Lower Strut	1
48	15W5505	Upper Tube Weldment	1
49	15L22064	Modified Bolt	1
50	15L22065	Modified Bolt	1
51	1504459	Ball Detent Pin	1
52	1505514	Cylinder Strap	1
53	150736	5/16 – 24 x 2 ¾ LG CS	8
54	150316	AN Washer	16
55	150748	¼ - 28 x 1 LG CS	1
56	150298	¼ - 28 Nylok Nut	1
57	1505469	Cylinder	2
58	15L23163	Spacer, Cylinder Shaft	4
59	1504455	1 – 14 x 4 ½ LG CS	2
60	15L22066	Cylinder Pin	2
61	15L16640	Chain	1
62	15L16864	Placard	1
63	15L21439	Placard	1
64	15L22083	Placard	1
65	1502418	½ x 3/8 Hex Bushing	2
66	1505937	Check Valve	2
67	150680	Swivel, 3/8 Male x ¼ Female	2
68	15F987	Hose Assembly	2
69	15F1937	Hose Assembly	1
70	1501117	¼ Tee	1
71	15F2631	Hose Assembly	1
72	15F2697	Hydraulic Assembly	1
73	1502587	Conduit Clamp	2
74	1501419	Vinyl Clamp	2
75	1505865	Grease Zerk, 3/16 Drive In	4

Parts List

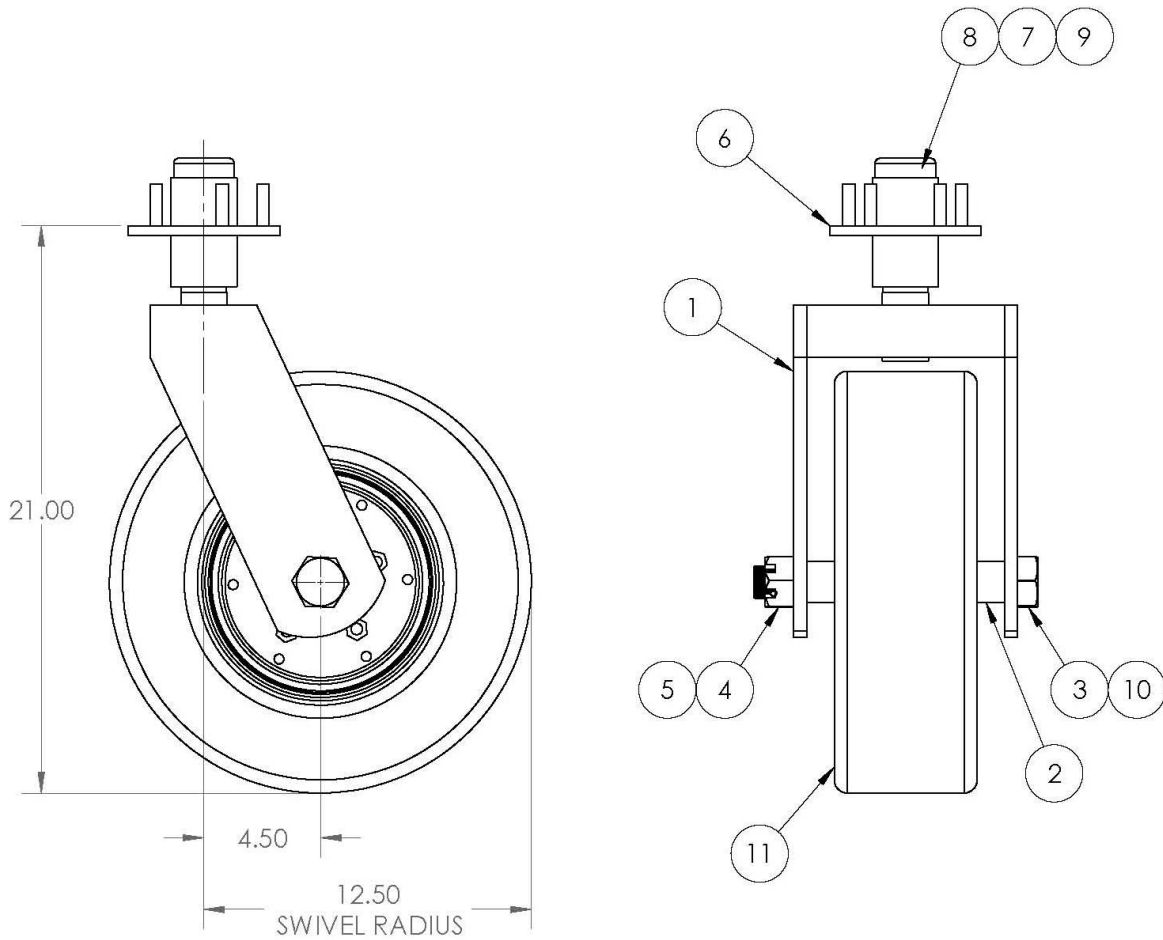
When ordering replacement parts/kits, please specify model, serial number and color of your unit.



Item	Part Number	Description	Qty
1	15W5472	Platform Weldment	1
2	15W5139	Handrail Extension	2
3	15L20749	End Cap Flat	2
4	1502119	3/8 – 24 x 3/4 LG CS	4
5	15L19565	Bumper	2
6	15W4886	Bumper Strip Weldment	2
7	15L21938	Bumper	2
8	15W5473	Bumper Strip	2
9	150315	5/16 - 24 Nylok Nut	16
10	1504705	Ball Lock Pin	2
11	1505325	S Hook	1
12	1504006	S Hook	1
13	1505314	Chain Snap	1
14	15W5474	Handrail, Front	2

Parts List

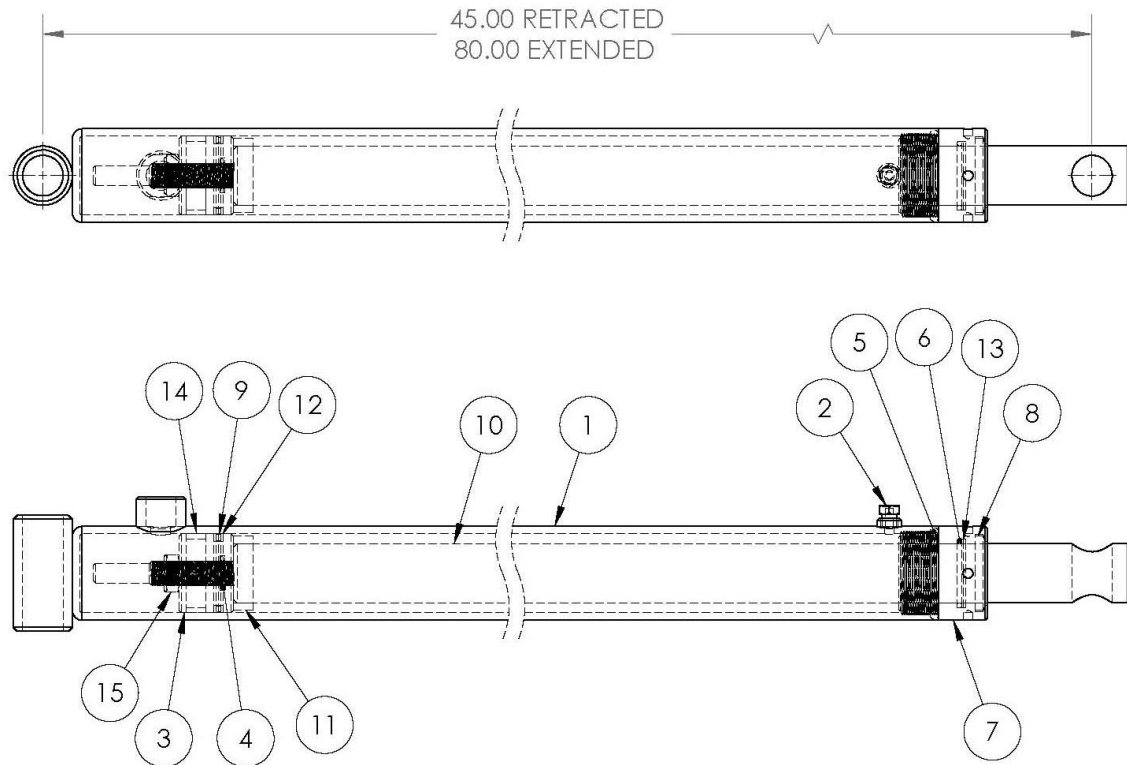
When ordering replacement parts/kits, please specify model, serial number and color of your unit.



Item	Part Number	Description	Qty
1	15W5508	Caster Frame Weldment	1
2	15L22082	Spacer	2
3	15L22081	Axle Bolt	1
4	1505055	1 ¼ Slotted Nut	1
5	150318	¼ x 1 ¾ LG Roll Pin	1
6	1504668	Hub Assembly	1
7	1504722	1.015 ID AN Washer	1
8	1504399	1 – 14 Slotted Nut	1
9	1502258	1/8 x 2 LG Cotter Key	1
10	1504492	5 Bolt Hub	1
11	15F1892	Tire & Wheel Assembly	1

Parts List

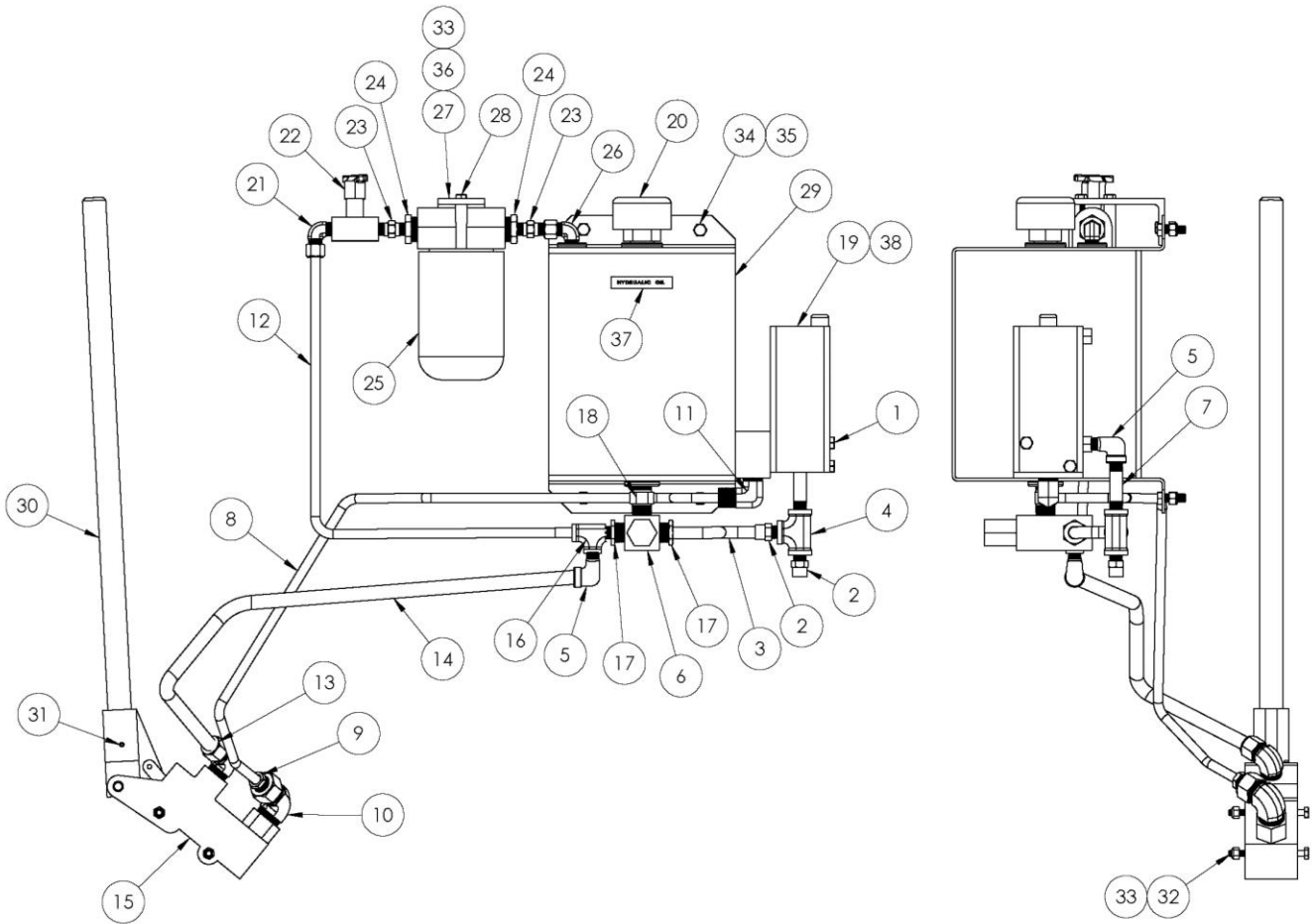
When ordering replacement parts/kits, please specify model, serial number and color of your unit.



Item	Part Number	Description	Qty
1	1505703	Jacket Assembly	1
2	1505705	1/8 NPT Breather	1
3	1505346	Piston (Steel)	1
4	1505349	O-Ring	1
5	1505706	O-Ring	1
6	1505707	O-Ring	1
7	1505709	Gland Nut	1
8	1505356	Rod Wiper	1
9	1505347	Polypak	1
10	1505704	Piston Rod	1
11	1505702	Stop Tube	1
12	1505348	Teflon Backup	1
13	1505708	Backup Washer	1
14	1505345	Wear Ring	1
15	1505344	Lock Nut	1

Parts List

When ordering replacement parts/kits, please specify model, serial number and color of your unit.

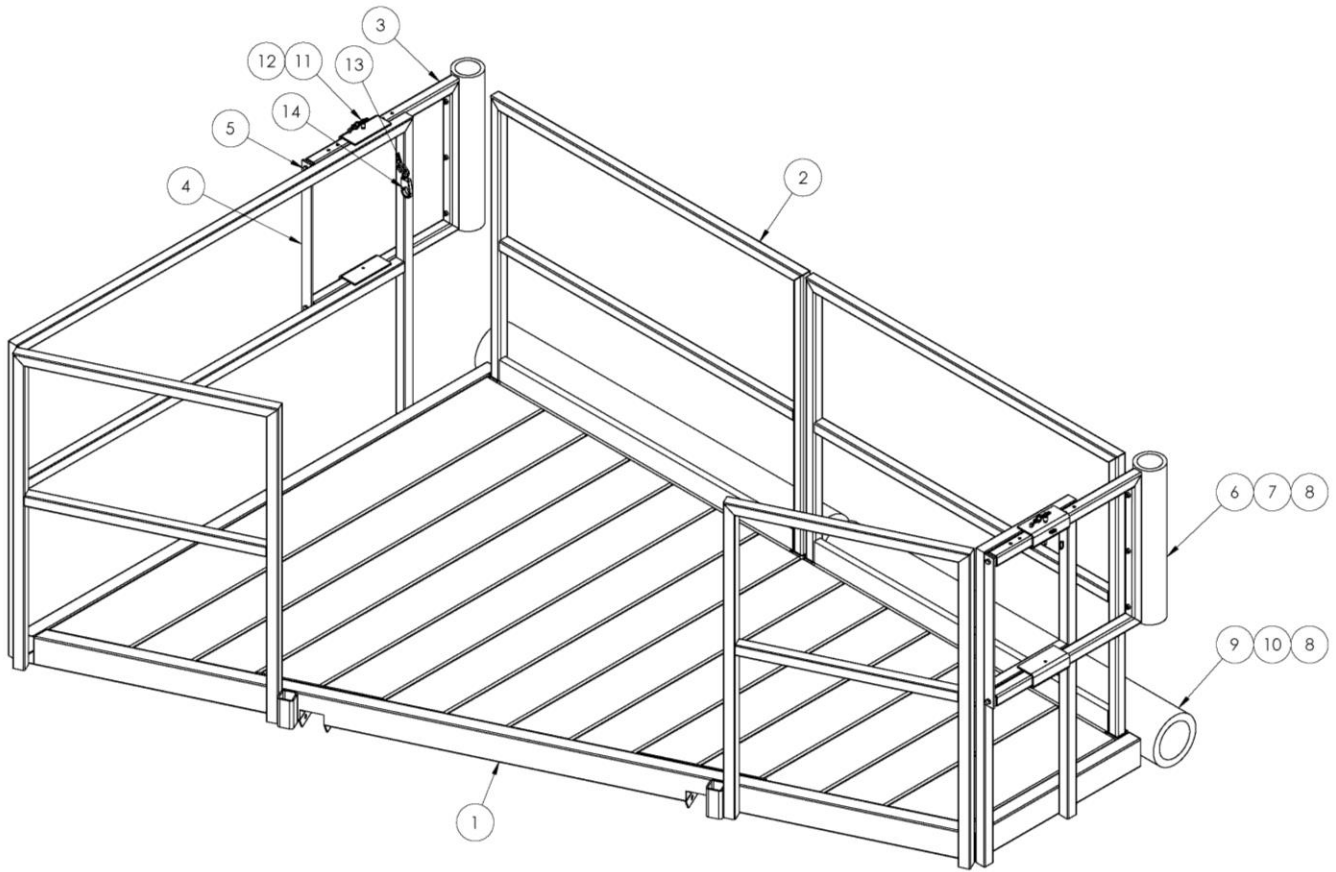


Parts List

When ordering replacement parts/kits, please specify model, serial number and color of your unit.

Item	Part Number	Description	Qty
1	1501357	5/16 – 24 x 3 ½ LG CS	2
2	1502199	Swivel	2
3	15F1914	Hose Assembly	1
4	1501117	¼ Tee	1
5	1502117	¼ NPT Street Elbow	2
6	1505612	Prince Valve	1
7	1505614	¼ x 2 ½ LG Straight Nipple	1
8	15F1034	Hose Assembly	1
9	1502243	3/8 x ¼ RHex Bushing	1
10	1504468	Swivel	1
11	150479	3/8 NPT Street Elbow	1
12	15F1942	Hose Assembly	1
13	1504467	Swivel	1
14	15F918	Hose Assembly	1
15	1504446	Dual Acting Pump	1
16	1503952	¼ NPT Male Tee Run	1
17	1502350	½ to ¼ Bushing	2
18	150901	½ NPT Hex Nipple	1
19	1505613	Pump	1
20	1502022	Breather	1
21	1501110	¼ 90° Male Swivel	1
22	1502995	¼ Needle Valve	1
23	1501108	¼ Hex Nipple	2
24	1503877	¾ to ¼ Bushing	2
25	1502749	Filter	1
26	15W5507	Return Fitting Weldment	1
27	15L21946	Oil Filter Bracket	1
28	1502552	¼ - 20 x ¾ LG CS	2
29	15W5506	Oil Reservoir	1
30	15L6779	Pump Handle	1
31	150338	3/16 x 1 ½ LG Roll Pin	1
32	1503604	¼ NF x 3 ¼ LG CS	2
33	150298	¼ - 28 Nylok Nut	4
34	150191	5/16 – 24 x 1 LG CS	5
35	150315	5/16 - 24 Nylok Nut	4
36	150304	¼ - 28 x ¾ LG CS	2
37	15L13490	Placard, Hydraulic Oil	1
38	1505907	Pump Seal Kit	1

Optional Platform Parts List



Item	Part Number	Description	Qty
1	15W5598	Platform Weldment	1
2	15W5474	Handrail, Front	2
3	15W5139	Handrail Extension	2
4	15L20749	End Cap Flat	2
5	1502119	3/8 – 24 x 3/4 LG CS	4
6	15L19565	Bumper	2
7	15W4886	Bumper Strip Weldment	2
8	150315	5/16 - 24 Nylok Nut	16
9	15L21938	Bumper	2
10	15W5473	Bumper Strip	2
11	1504705	Ball Lock Pin	2
12	1505325	S Hook	2
13	1504006	S Hook	1
14	1505314	Chain Snap	1