

TRONAIR

OPERATION & SERVICE MANUAL

Models:

06-5020-1500

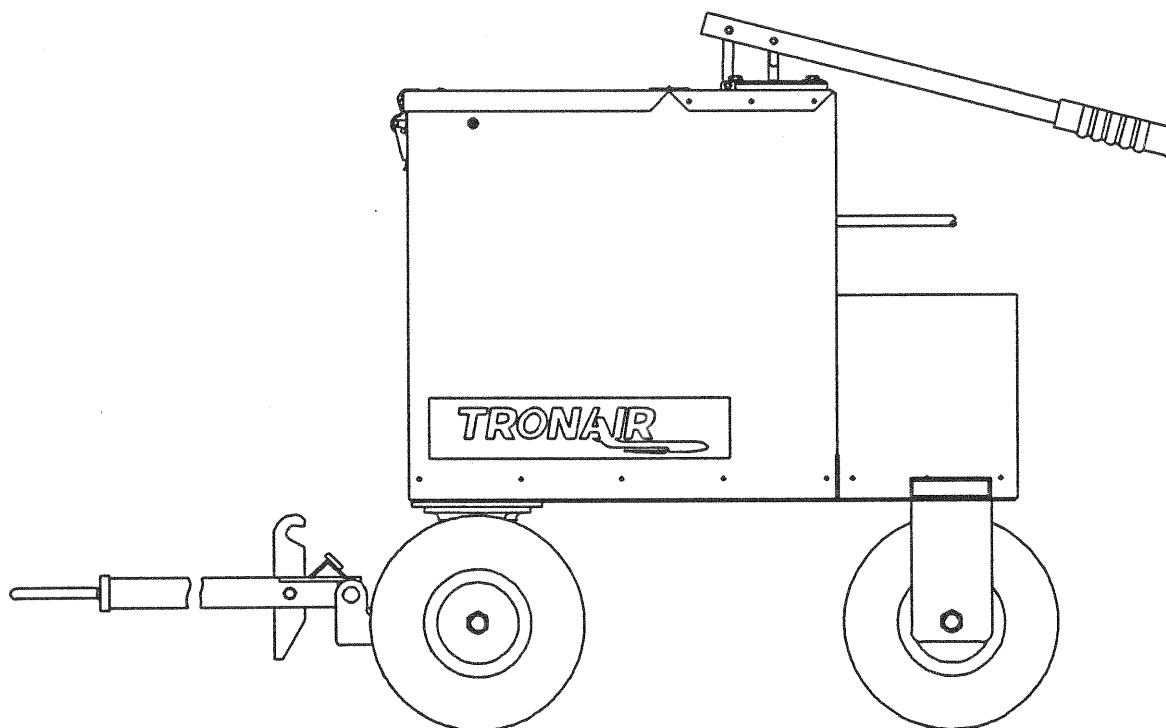
06-5020-3600

06-5020-8600

RESERVOIR SERVICING UNIT

September, 1995

Rev: 05



Tronair

South 1740 Eber Road
Holland, Ohio 43528-9794

Phone: (419) 866-6301 • 800-426-6301

Fax: (419) 867-0634

RESERVOIR SERVICING UNIT

1.0 GENERAL DESCRIPTION

The Tronair Reservoir Service Unit is a compact unit primarily designed to provide a source of clean fluid for filling reservoirs. It is not intended for performing any pressure testing tasks. A unique feature is that the unit pumps fluid directly from standard 5 gallon containers.

2.0 SPECIFICATIONS

<u>MODEL NUMBER</u>	<u>FLUID</u>	<u>MAX. PRESSURE</u>	<u>FILTER (MICRON)</u>
06-5020-1500	MIL-H-5606/83282	75 PSI	3 & 15
06-5020-3600	SKYDROL/HYJET	75 PSI	3 & 15
06-5020-8600	SKYDROL/HYJET	75 PSI	3 & 15

DIMENSIONS: 30" W x 28" L x 31" H

WEIGHT: 210 pounds

PUMP DISPLACEMENT: 9 cubic inch / stroke

3.0 FEATURES

- 15 foot hose
- Pickup tube fits all standard 5 gallon cans
- 3 micron main filter with 15 micron inline filter at end of hose on hydraulic fluid units
- Pneumatic tires

4.0 PREPARATION FOR USE

The unit is shipped fully assembled, and only the following steps are required to make it operational:

- Set 5 gallon cans of fluid inside the unit and lock in place with slide lock.

NOTE: On 06-5020-1500 units only, apply appropriate fluid level to inside of lid.

CAUTION: ONLY USE THE TYPE OF FLUID FOR WHICH THE UNIT IS DESIGNED. USING OTHER FLUIDS WILL CAUSE CONTAMINATION AND SEAL DETERIORATION.

- Remove the cap and seal from one container, pull out plastic spout, and insert pickup tube into the neck. Screw down the fitting to form a snug fit.
- Operate hand pump several times to fill line and purge air. Install coupling at hose end if applicable.

RESERVOIR SERVICING UNIT

5.0 OPERATION

To use the unit:

- Make sure pickup tube is completely tightened down.
- Securely attach hose to aircraft.
- Operate pump handle at a slow to moderate pace with even pressure.

NOTE:

- It is not necessary to operate pump rapidly. The pump moves a large volume of oil per stroke and will fill a reservoir much faster than standard pumps.
- A slow movement of the pump handle with a steady pressure works best.

When service has been completed:

- Disconnect hose from aircraft.
- Replace protective cap on hose end to prevent dirt ingestion.

6.0 MAINTENANCE

TIRES

Maintain 45-50 PSI tire pressure.

FILTERS

Both filters are of a non-bypass design. This means that, if either filter becomes clogged, no fluid will pass to the aircraft and a high handle force will result. If this happens, service the filters. DO NOT force the pump handle as damage to unit components could result.

SERVICE

The 3 micron main filter inside the unit is of a throw-away design and is not cleanable. The 15 micron hose end filter may be cleaned by removing and back flushing with clean hydraulic fluid or a neutral fluid. DO NOT use chlorinated solvents for this purpose. If desired, this filter may be replaced.

PARTS LIST

MODEL: 06-5020-XX00 Reservoir Servicing Unit

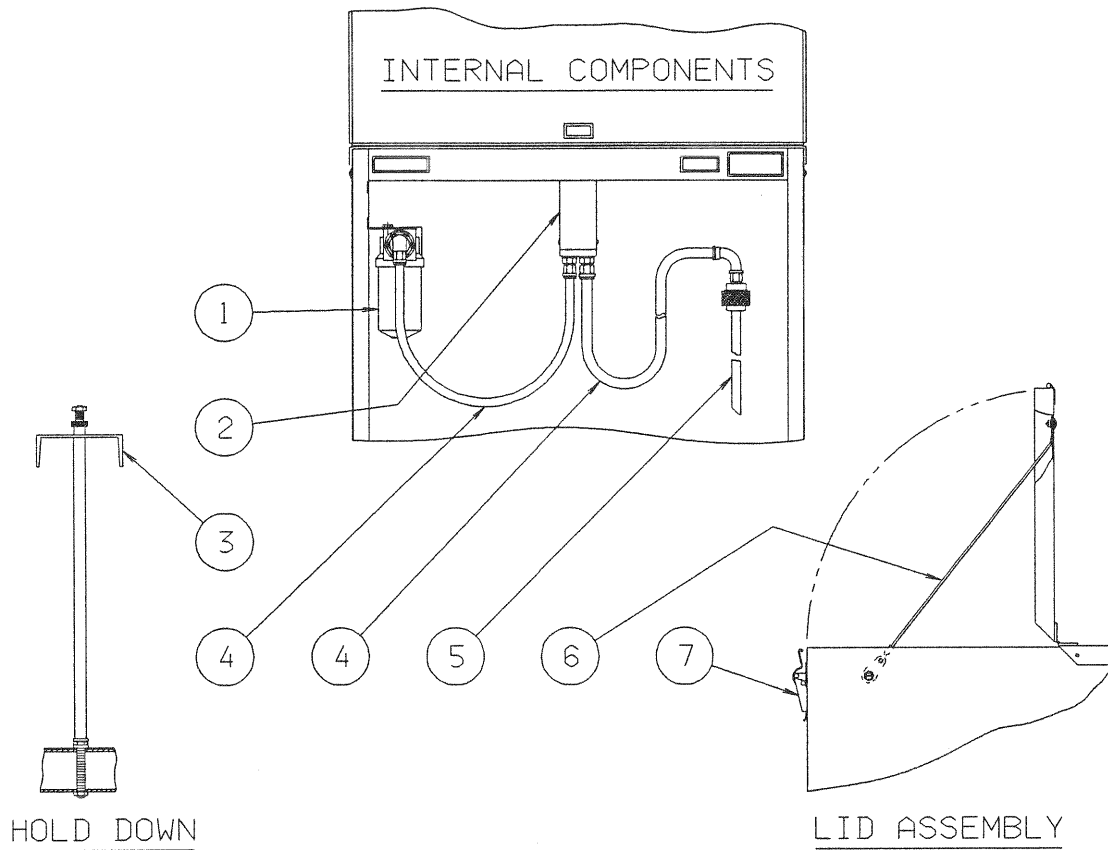
March 1995

<u>ITEM</u>	<u>PART NO.</u>	<u>DESCRIPTION</u>	<u>QTY.</u>
1	HC-1480 HC-1481	Assembly, Filter (Phosphate Ester) Assembly, Filter (Mineral)	1
2	Z-2030 Z-2029	Hand Pump (Phosphate Ester) Hand Pump (Mineral)	1
3	K-1766	Kit, Hold Down Assembly	1
4	K-1769 K-1772	Kit, Internal Hose (Phosphate Ester) Kit, Internal Hose (Mineral)	1
5	Z-2031	Assembly, Pickup Tube	1
6	K-1767	Kit, Lanyard Assembly	2
7	K-1768	Kit, Latch	1
8	HC-1484	Filter, Inline	1
9	K-1764 K-1771	External Hose Kit (Phosphate Ester) External Hose Kit (Mineral)	1
10	K-1250	Kit, Pneumatic Tire	4
11	K-1765	Kit, Axle	1
12	Z-2036	Weldment, Tongue	1
13	N-2052-06	Expander Tube (not shown)	1

TRONAIR

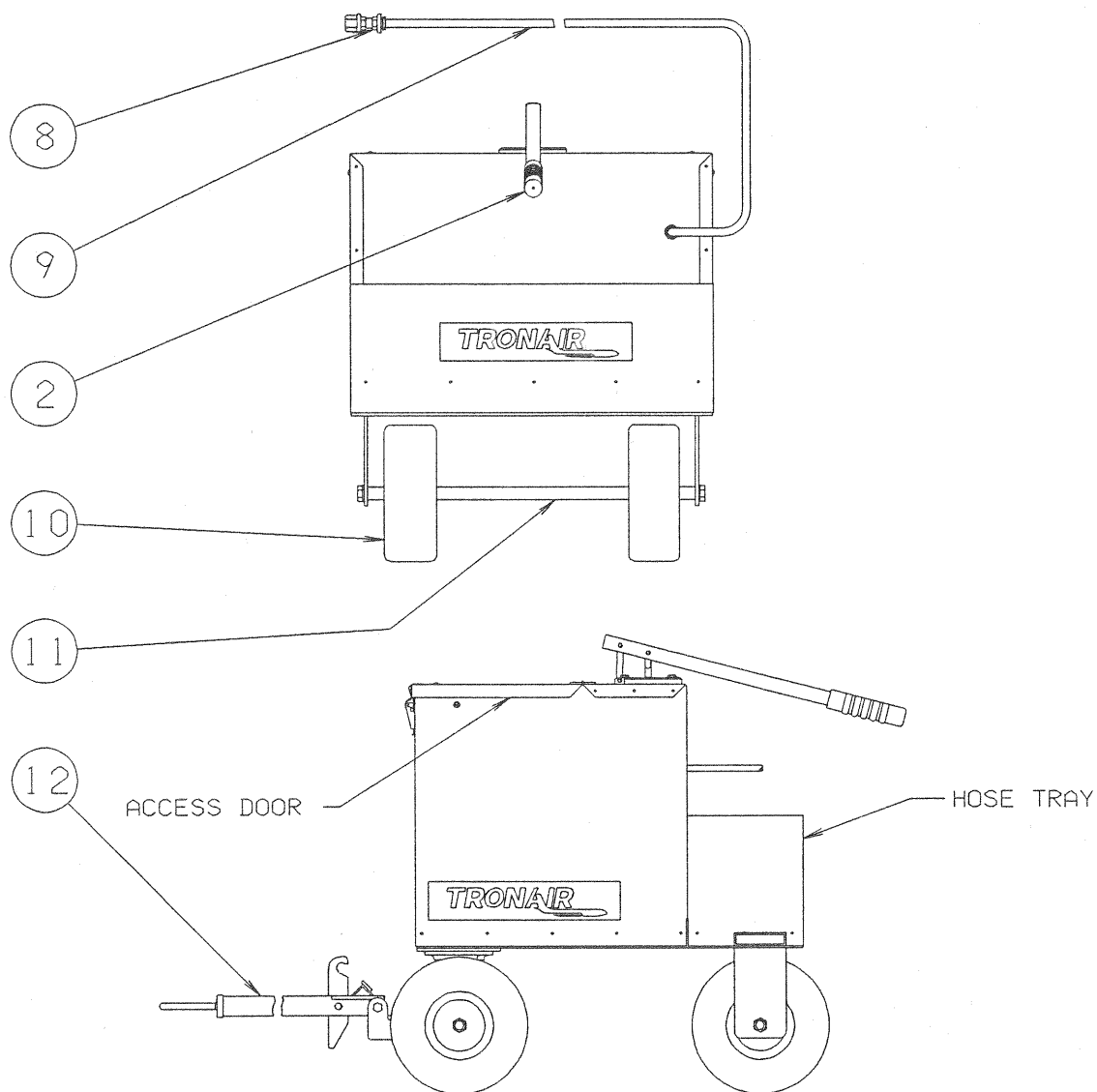
South 1740 Eber Road • Holland, Ohio 43528
(419) 866-6301 • 1-800-426-6301
Fax (419) 867-0634

RESERVOIR SERVICING UNIT

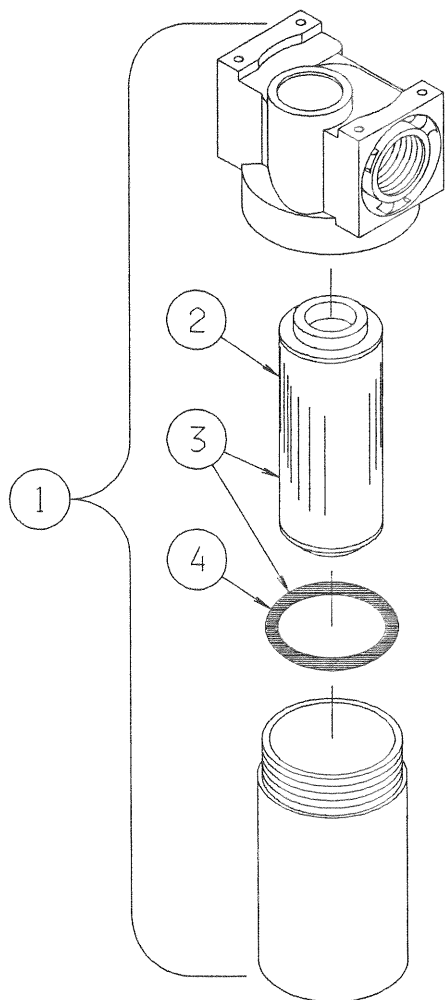


06-5020-XX00 RESERVOIR SERVICING UNIT

EXTERNAL VIEW



06-5020-XX00 RESERVOIR SERVICING UNIT



<u>ITEM</u>	<u>PART NO.</u>	<u>DESCRIPTION</u>	<u>QTY.</u>
1	HC-1481	Filter Assembly (Mineral Base)	1
	HC-1480	Filter Assembly (Phosphate Ester)	1
2	HC-1482	Filter Element (Mineral Base)	1
	HC-1483	Filter Element (Phosphate Ester)	1
FILTER REPLACEMENT PARTS			
3	K-1742	Filter Element Kit (Mineral Base)	1
	K-1743	Filter Element Kit (Phosphate Ester)	1
4	HC-2007-143	O-Ring Series 2 (BUNA)	1
	HC-2006-143	O-Ring Series 2 (EPR)	1

06-5020-XX00 RESERVOIR SERVICING UNIT

TOWBAR ASSEMBLY

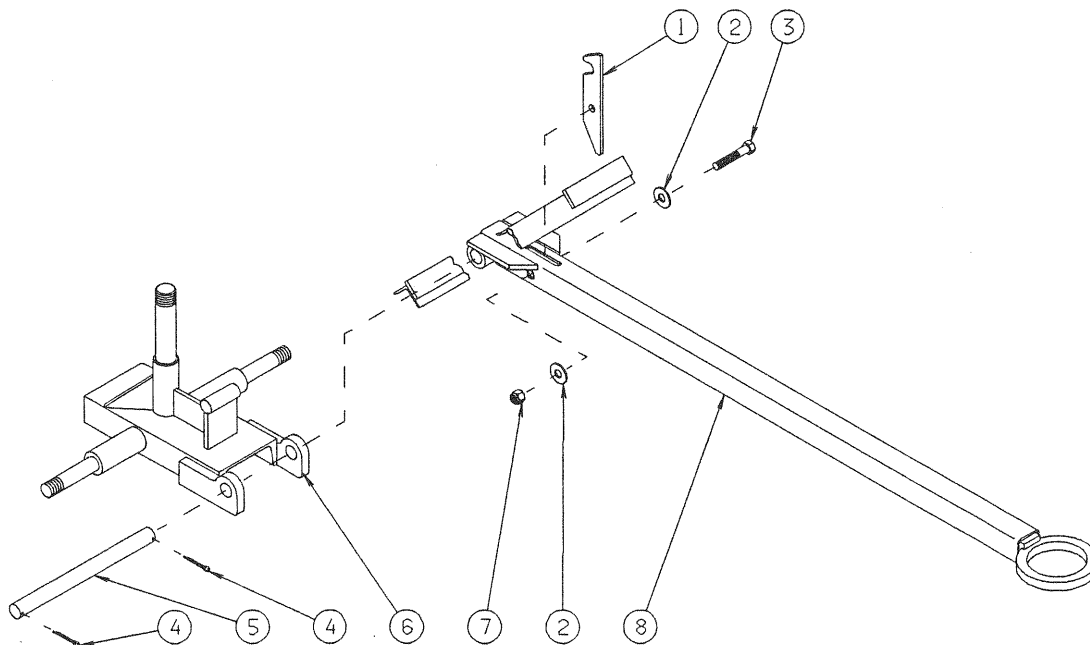
REPLACEMENT PARTS

<u>ITEM</u>	<u>PART NO.</u>	<u>DESCRIPTION</u>	<u>QTY.</u>
6	Z-2037	Weldment, Truck	1
8	Z-2036	Weldment, Tongue	1

(All other parts available in replacement kits only)

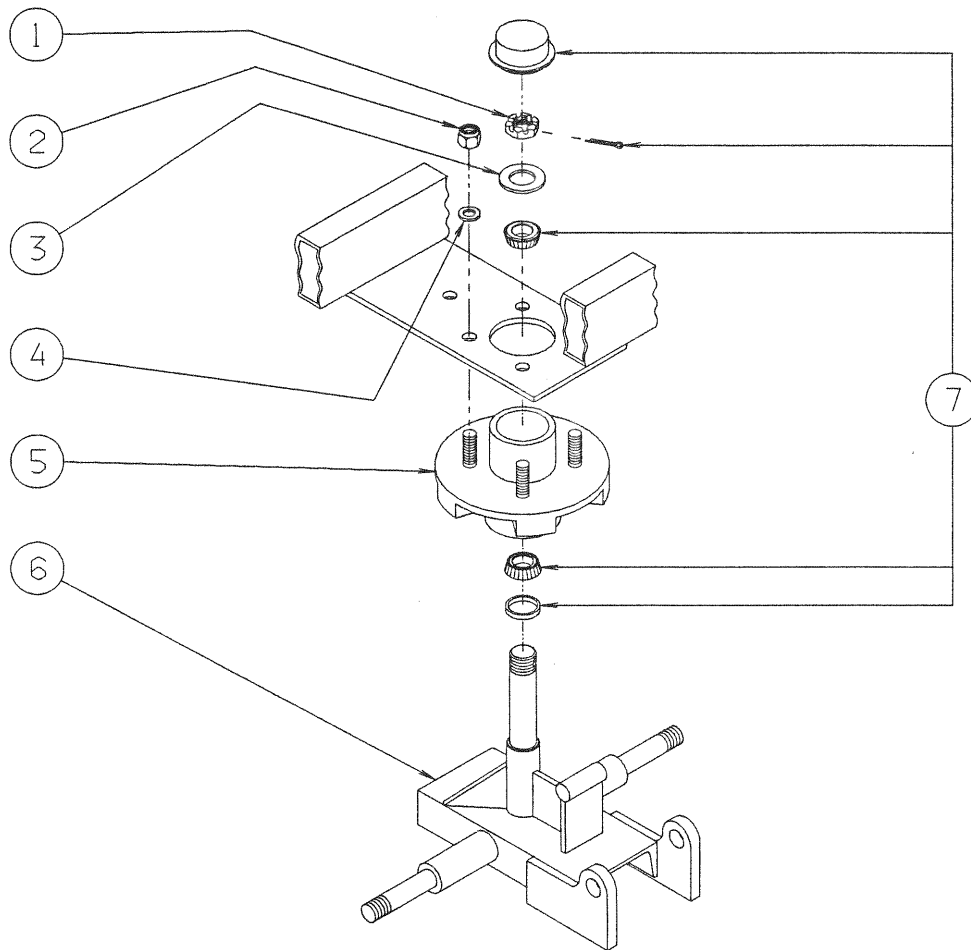
REPLACEMENT KITS

K-1320	Locking Lever, Replacement Kit; consists of:		
	- Item 1	Brake	1
	- Item 2	Flatwasher, 1/2"	2
	- Item 3	H.H. Bolt, GR 5, 1/2-20 x 2 1/4" Long	1
	- Item 7	Elastic Stopnut, 1/2-20	1
K-1249	Towbar Pin, Replacement Kit, consists of:		
	- Item 4	Cotter Pin, 1/8 Dia. x 1 1/2" Long	2
	- Item 5	Towbar Pin	1



06-5020-XX00 RESERVOIR SERVICING UNIT

TRUCK ASSEMBLY



REPLACEMENT KITS

K-1253	Hub Bearing and Seal Kit; consists of:		
	- Item 7	Bearing Kit: consists of:	1
		Grease Seal	1
		Bearings	2
		Dust Cap	1
		Cotter Pin	1
K-1255	Hub Assembly Kit; consists of:		
	- Item 1	Hex Nut	1
	- Item 2	Nut	4
	- Item 4	Washer	4
	- Item 5	Hub	1
	- Item 6	Weldment, Truck	1
	- Item 7	Bearing Kit	1

REPLACEMENT PARTS

- Item 3	Spindle Washer	1
----------	----------------	---

PARTS LIST

MODEL: 06-5020-XX00 Hand Pump Z-2029, Z-2030

March 1995

REPLACEMENT PARTS

<u>ITEM</u>	<u>PART NO.</u>	<u>DESCRIPTION</u>	<u>QTY.</u>
7	TR-1277	Cylinder	1
8	R-1289	Piston	1
11	G-1154-103004	Screw, Button HD Soc. Cap #10-24 x ½ Lg.	2
12	G-1303-06070	Roll Pin	1
13	R-1287	End Cap/Valve	1
15	N-2007-11-S	Connector, Str	1
16	R-1288	Head, Pump	1
19	R-1286	Rod, Piston	1
20	G-1203-1050	Elastic Jam Nut, ¼-20	1
24	HC-1493	Output Fitting	1

(All other parts available in Replacement Kits only)

REPLACEMENT KITS

K-1771	Seals and Valve Kit (Mineral); consists of:		
K-1753	Seals and Valve Kit (Phos. Ester); consists of:		
	- Item 9	Backup Ring	1
	- Item 10	O-Ring (Phosphate Ester)	1
		O-Ring (Mineral)	
	- Item 14	Ball	2
	- Item 17	Rod Wiper	1
	- Item 22	O-Ring (Phosphate Ester)	1
		O-Ring (Mineral)	
	- Item 23	Spring	1
	- Item 25	O-Ring (Phosphate Ester)	2
		O-Ring (Mineral)	
K-1763	Handle Kit; consists of:		
	- Item 1	Bolt, Shoulder ¼" Dia. X 1" long	2
	- Item 2	Nut, ESN #10-24 UNC	2
	- Item 3	Handle	1
	- Item 5	Clevis Pin, ¼ Dia. X 2¼" long	1
	- Item 6	Cotter Pin, 1/16 Dia. X ½" long	1
	- Item 18	Grip, Handle	1



South 1740 Eber Road • Holland, Ohio 43528
 (419) 866-6301 • 1-800-426-6301
 Fax (419) 867-0634

TRONAIR

06-5020-XX00
RESERVOIR SERVICING UNIT

HAND PUMP

