

**Model: 06-5022-6800-A2  
Fluid Servicing Unit**



02/2021 - Rev. 02

REVISION  
01  
02

DATE  
04/2017  
09/2021

TEXT AFFECTED  
Original release  
Updated Parts List

**TABLE OF CONTENTS**

	<b><u>PAGE</u></b>
<b>1.0 PRODUCT INFORMATION .....</b>	<b>1</b>
1.1 DESCRIPTION.....	1
1.2 MODEL & SERIAL NUMBER.....	1
1.3 MANUFACTURER.....	1
1.4 SPECIFICATIONS .....	1
1.5 FEATURES.....	1
<b>2.0 SAFETY INFORMATION.....</b>	<b>1</b>
2.1 USAGE AND SAFETY INFORMATION .....	1
<b>3.0 PREPARATION FOR USE .....</b>	<b>1</b>
<b>4.0 TRAINING.....</b>	<b>2</b>
4.1 TRAINING REQUIREMENTS .....	2
4.2 TRAINING PROGRAM .....	2
4.3 OPERATOR TRAINING.....	2
<b>5.0 OPERATION.....</b>	<b>2</b>
<b>6.0 MAINTENANCE.....</b>	<b>2</b>
6.1 FILTER.....	2
<b>7.0 PROVISION OF SPARES.....</b>	<b>2</b>
7.1 SOURCE OF SPARE PARTS.....	2
7.2 RECOMMENDED SPARE PARTS LISTS .....	2
<b>8.0 GUARANTEES/LIMITATION OF LIABILITY .....</b>	<b>3</b>
<b>9.0 APPENDICES .....</b>	<b>3</b>



## 4.0 TRAINING

### 4.1 TRAINING REQUIREMENTS

The employer of the operator is responsible for providing a training program sufficient for the safe operation of the unit.

### 4.2 TRAINING PROGRAM

The employer provided operator training program should cover safety procedures concerning use of the unit in and around the intended aircraft at the intended aircraft servicing location.

### 4.3 OPERATOR TRAINING

The operator training should provide the required training for safe operation of the unit.

**NOTE: Maintenance and Trouble Shooting are to be performed by a skilled and trained technician.**

## 5.0 OPERATION

### To Use the Unit:

1. Securely attach hose to aircraft.
2. Operate pump handle at a slow to moderate pace with even pressure.

**NOTES:** 1. *It is not necessary to operate pump rapidly. The pump moves a large volume of oil per stroke and will fill a reservoir much faster than standard pumps.*  
2. *A slow movement of the pump handle with a steady pressure works best.*

### When Service Has Been Completed:

1. Disconnect hose from aircraft.
2. Replace protective cap on hose end to prevent dirt ingestion.

## 6.0 MAINTENANCE

### 6.1 FILTER

The filter is of a non-bypass design. This means that, if the filter becomes clogged, no fluid will pass to the aircraft *and* a high handle force will result. If this happens, replace filter element. **DO NOT FORCE** the pump handle as damage to unit components could result.

Element replacement schedule should be based on usage and actual fluid samples. For units with low usage, element should be changed at least once annually.

## 7.0 PROVISION OF SPARES

### 7.1 SOURCE OF SPARE PARTS

Spare parts may be obtained from the manufacturer:

**TRONAIR**, Inc.

1 Air Cargo Pkwy East

Swanton, Ohio 43558 USA

Telephone: (419) 866-6301 or 800-426-6301

Fax: (419) 867-0634

E-mail: sales@tronair.com

Website: www.tronair.com

### 7.2 RECOMMENDED SPARE PARTS LISTS

Reference the following page(s) for Replacement Parts and Kits available.

## 8.0 GUARANTEES/LIMITATION OF LIABILITY

Tronair products are warranted to be free of manufacturing or material defects for a period of one year after shipment to the original customer. This is solely limited to the repair or replacement of defective components. This warranty does not cover the following items:

- a) Parts required for normal maintenance
- b) Parts covered by a component manufacturers warranty
- c) Replacement parts have a 90-day warranty from date of shipment

If you have a problem that may require service, contact Tronair immediately. Do not attempt to repair or disassemble a product without first contacting Tronair, any action may affect warranty coverage. When you contact Tronair be prepared to provide the following information:

- a) Product Model Number
- b) Product Serial Number
- c) Description of the problem

If warranty coverage is approved, either replacement parts will be sent or the product will have to be returned to Tronair for repairs. If the product is to be returned, a Return Material Authorization (RMA) number will be issued for reference purposes on any shipping documents. Failure to obtain a RMA in advance of returning an item will result in a service fee. A decision on the extent of warranty coverage on returned products is reserved pending inspection at Tronair. Any shipments to Tronair must be shipped freight prepaid. Freight costs on shipments to customers will be paid by Tronair on any warranty claims only. Any unauthorized modification of the Tronair products or use of the Tronair products in violation of cautions and warnings in any manual (including updates) or safety bulletins published or delivered by Tronair will immediately void any warranty, express or implied.

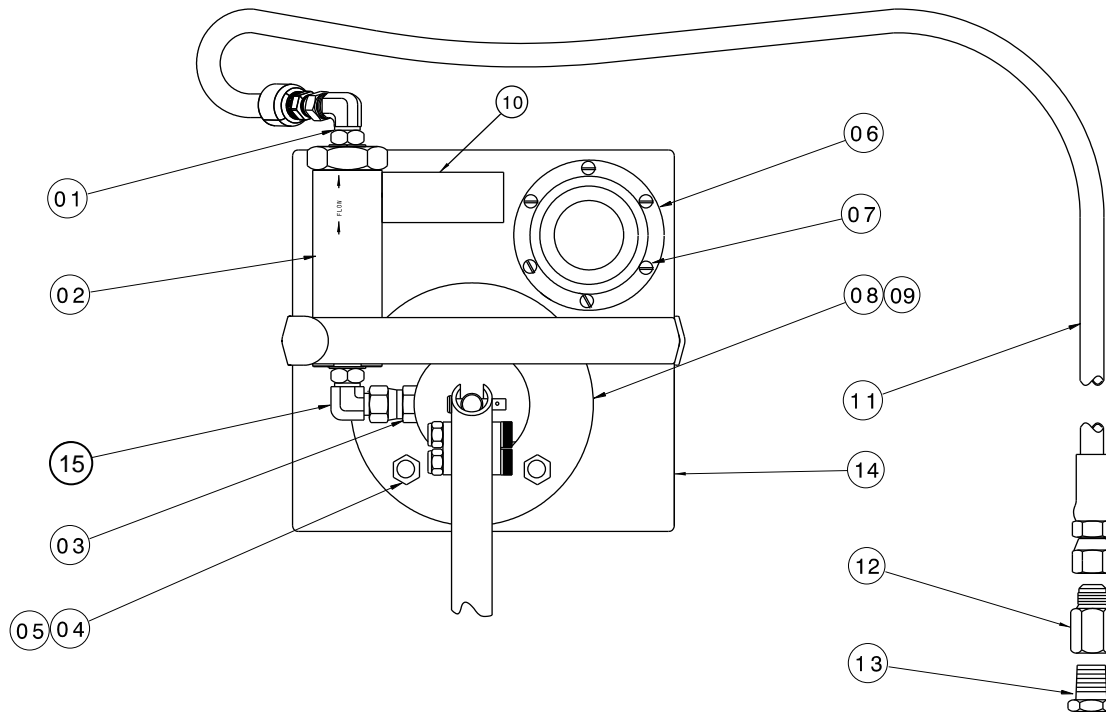
The obligations of Tronair expressly stated herein are in lieu of all other warranties or conditions expressed or implied. **Any unauthorized modification of the Tronair products or use of the Tronair products in violations of cautions and warnings in any manual (including updates) or safety bulletins published or delivered by Tronair will immediately void any warranty, express or implied and Tronair disclaims any and all liability for injury (WITHOUT LIMITATION and including DEATH), loss or damage arising from or relating to such misuse.**

## 9.0 APPENDICES

APPENDIX I Declaration of Conformity

## Parts List

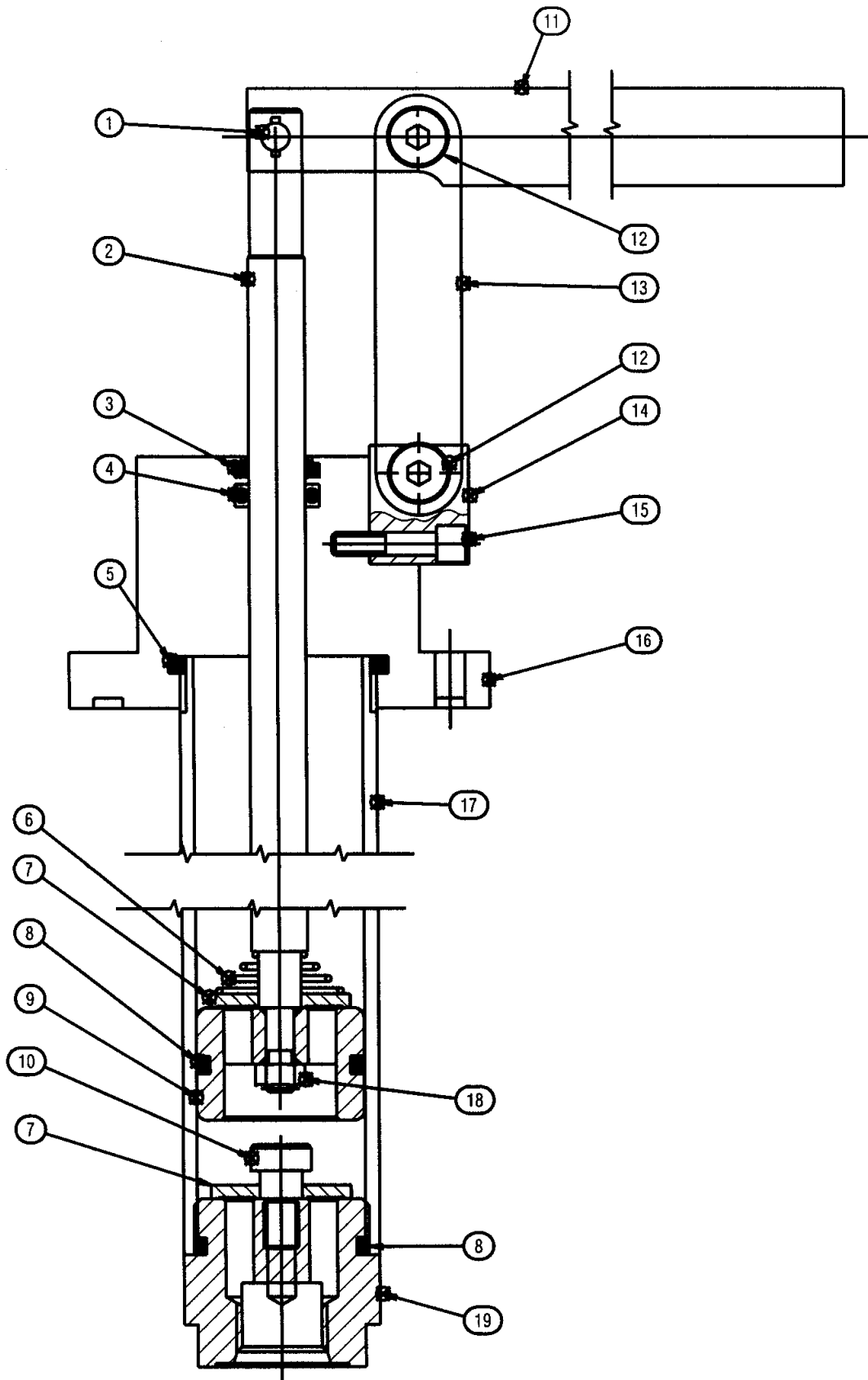
When ordering Replacement Parts/Kits, please specify Model & Serial Number of your product.



Item	Part Number	Description	Qty
1	N-2001-12-S-V	Elbow, Straight Thread	1
2	HC-2141	Filter, inline (Viton)	1
3	N-2036-03- S-V	Swivel, 37° JIC	1
4	G-1463-1070	Nut, 3/8 Acorn Hex	4
5	G-1250-1070N	Flatwasher, 3/8 Narrow	4
6	HC-1030	Filler-Breather	1
7	G-1157-103504	Screw, #10-32 Pan Head Cross Recess x 1/2 Long	6
8	HC-2171	Pump, Hand	1
9	HC-2007-334	O-ring, Series 2 (Viton)	1
10	V-1596	Lavel, DOD-PRF-85734	1
11	TF-1220	Assembly, Hose	1
12	N-2010-12-S	Connector, Female (8-8)	1
13	N-2006-05-S	Plug, 1/2 NPT	1
14	Z-5587	Weldment, 2 Gallon Container	1
15	N-2001-08-S-V	Elbow, Straight Thread	1

◆ Reference Pages 5& 6 for Item 8 (Hand Pump) View and Replacement Parts.

**Parts List - Hand Pump Illustration**





### Parts List

When ordering Replacement Parts/Kits, please specify Model & Serial Number of your product.

Item	Part Number	Description	Qty
2	CXD-020004-004	Piston Rod	1
6	CENT-TA-2098	Spring	1
7	CXD-020004-006	Flapper	2
9	CXD-020004-005	Piston	1
13	512-000	Strap	2
14	CXD-020004-009	Mounting Block	1
15	09-ADDF-0J-32 x 14	Socket Head Cap Screw	1
16	CXD-020004-002	Cap & Mounting Flange	1
17	CXD-020004-003	Tube	1
18	08-ADFH-04-28	Prevailing Locknut	1
19	CXD-020004-001	End Cap, Blind End	1
N/S	CXD-020057-001	Grip, Handle	1
	<b>HK-3715</b>	<b>Kit, Pump Seal Replacement; consists of:</b>	
3		Wiper, Viton	1
4		O-ring, Viton	1
5		O-ring, Viton	1
8		O-ring, Viton	2
	<b>HK-3768</b>	<b>Kit, Handle Replacement; consists of:</b>	
1		Pin, Linkage Assembly	1
11		Pump Handle	1
12		Pin Linkage Assembly	2
N/S	<b>K-3659</b>	<b>Kit, Filter Element; consists of:</b>	
	HC-2007-011	O-ring, Series 2	1
	HC-2014-914	O-ring, Series 3	1
	HC-2142	Element, Filter	1





## **APPENDIX I**

### **Declaration of Conformity**





## DECLARATION of CONFORMITY

The design, development and manufacture is in accordance with European Community guidelines

Fluid Servicing Unit  
06-5022-6800-A2

Relevant provisions complied with by the machinery:  
2006/42/EC

Identification of person empowered to sign on behalf of the Manufacturer:

A handwritten signature in cursive script that reads "Patrick Finch". The signature is written in black ink and is positioned above a solid horizontal line that spans the width of the signature.

Quality Assurance Representative