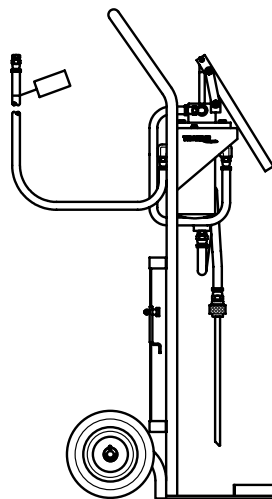




Operation & Service Manual



**Models: 06-5044-1500
06T5044-1500
Fluid Service Unit**

12/2004 - AB - Rev. 03

Includes Illustrated Parts Lists

Tronair, Inc.

*1740 Eber Road
Holland, Ohio 43528-9794
USA*

Telephone: (419) 866-6301 • 800-426-6301

Fax: (419) 867-0634

Web Site: www.tronair.com E-mail: mail@tronair.com

Models: 06-5044-1500 & 06T5044-1500
Fluid Service Unit

TABLE OF CONTENTS

PAGE

1.0	General Description.....	1
2.0	Specifications	1
3.0	Features	1
4.0	Preparation For Use.....	1
5.0	Operation.....	2
5.1	To Use The Reservoir Service Unit.....	2
5.2	When Service Has Been Completed.....	2
6.0	Maintenance	2
6.1	Tires	2
6.2	Filter.....	2
7.0	Options	2
7.1	Totalizer	2
8.0	Parts List.....	2

Models: 06-5044-1500 & 06T5044-1500
Fluid Service Unit

Revision	Date	Text Affected
03	12/2004	Throughout document changed Reservoir to Fluid pg 1 2.0 modified Fluid and Dimensions pg 2 7.0 modified Series number pg 7 Modified fluid in items 14, 19, 21 and 22

Models: 06-5044-1500 & 06T5044-1500
Fluid Service Unit

1.0 GENERAL DESCRIPTION

The Tronair Fluid Service Unit 06-5044-1500 is a compact unit primarily designed to provide a source of clean fluid for filling reservoirs. It is not intended for performing any pressure testing tasks. A unique feature is that the unit pumps fluid directly from standard five gallon (18.9 lt) containers.

The 06T5044-1500 model is of the same design as the standard unit with the addition of a totalizer option.

2.0 SPECIFICATIONS

06-5044-1500:	Fluid Service Unit
06T5044-1500:	Fluid Service Unit with Totalizer Option
Fluid:	Mobil 291
Maximum Pressure:	150 psi (10.3 bar)
Filter:	2 (Micron)
Dimensions:	
Width:	21 inches (53.3 cm)
Length:	19 1/8 inches 68.6 cm)
Height:	45 1/2 inches (116.8 cm)
Weight:	45 pounds (20.4 kg)
Pump Displacement:	4.4 cubic inch/stroke (72.1 cubic centimeters)

3.0 FEATURES

- 15 foot (4.6 m) hose
- Pickup tube fits all standard five gallon (18.9 lt) cans
- 2 micron main filter on hydraulic fluid units

4.0 PREPARATION FOR USE

The unit is shipped fully assembled, and only the following steps are required to make it operational:

1. Set five gallon (18.9 lt) can of fluid inside the ring and lock in place with slide lock.



CAUTION!

Only use the type of fluid for which the unit is designed. Using other fluids will cause contamination and seal deterioration.

2. Remove the cap and seal from the container, pull out plastic spout, and insert pickup tube into the neck. Screw down the fitting to form a snug fit.
3. Operate hand pump several times to fill line and purge air. Install coupling at hose end if applicable.

Models: 06-5044-1500 & 06T5044-1500
Fluid Service Unit

5.0 OPERATION

5.1 TO USE THE RESERVOIR SERVICE UNIT

1. Make sure pickup tube is completely tightened down.
2. Securely attach hose to aircraft.
3. Operate pump handle at a slow-to-moderate pace with even pressure.

NOTE: *It is not necessary to operate pump rapidly. The pump moves a large volume of oil per stroke and will fill a reservoir much faster than standard pumps.*

A slow movement of the pump handle with a steady pressure works best.

5.2 WHEN SERVICE HAS BEEN COMPLETED

1. Disconnect hose from aircraft.
2. Replace protective cap on hose end to prevent dirt ingestion.

6.0 MAINTENANCE

6.1 TIRES

Maintain 45 to 50 psi (3.1 to 4.4 bar) tire pressure.

6.2 FILTER

The filter is of a non-bypass design. This means, that if filter becomes clogged, no fluid will pass to the aircraft **and** a high handle force will result. If this happens, replace the filter element. **DO NOT** force the pump handle as damage to unit components could result. The 2 micron filter is of a throwaway design and is **not cleanable**.

7.0 OPTIONS

The following Option is available on 06-5044 Series Reservoir Service Units:

7.1 TOTALIZER

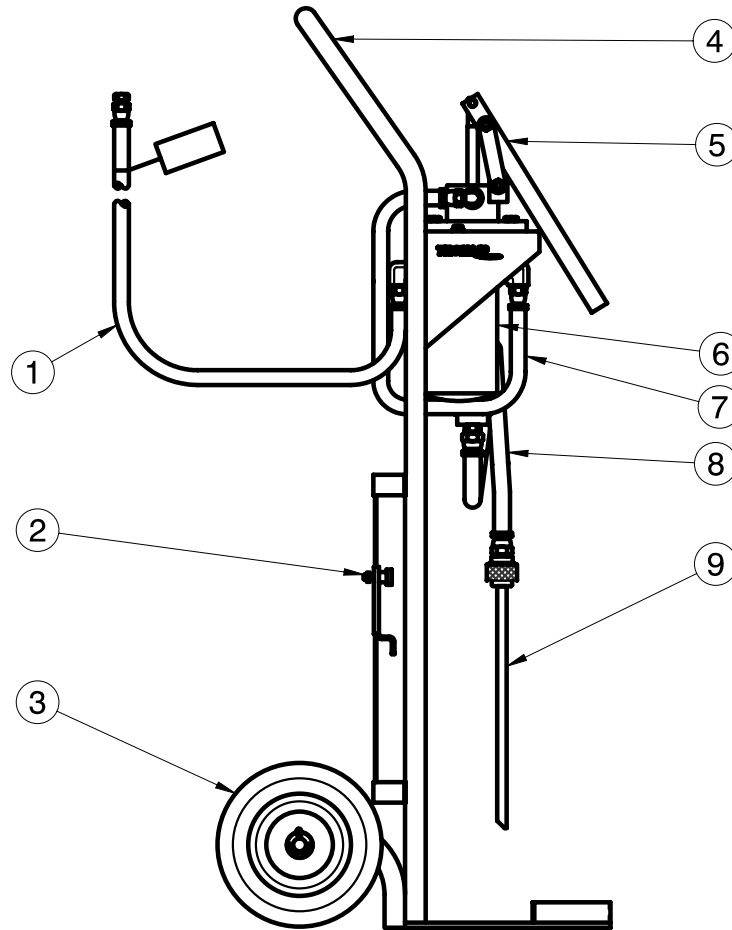
The totalizer indicates amount of fluid dispensed. After each use, the dispenser must be reset to zero for a true reading during next use. Refer to Illustrated Parts List for Replacement Parts.

8.0 PARTS LIST

Reference Pages 3 – 7 for ordering information of Replacement Parts and Kits.

Parts List

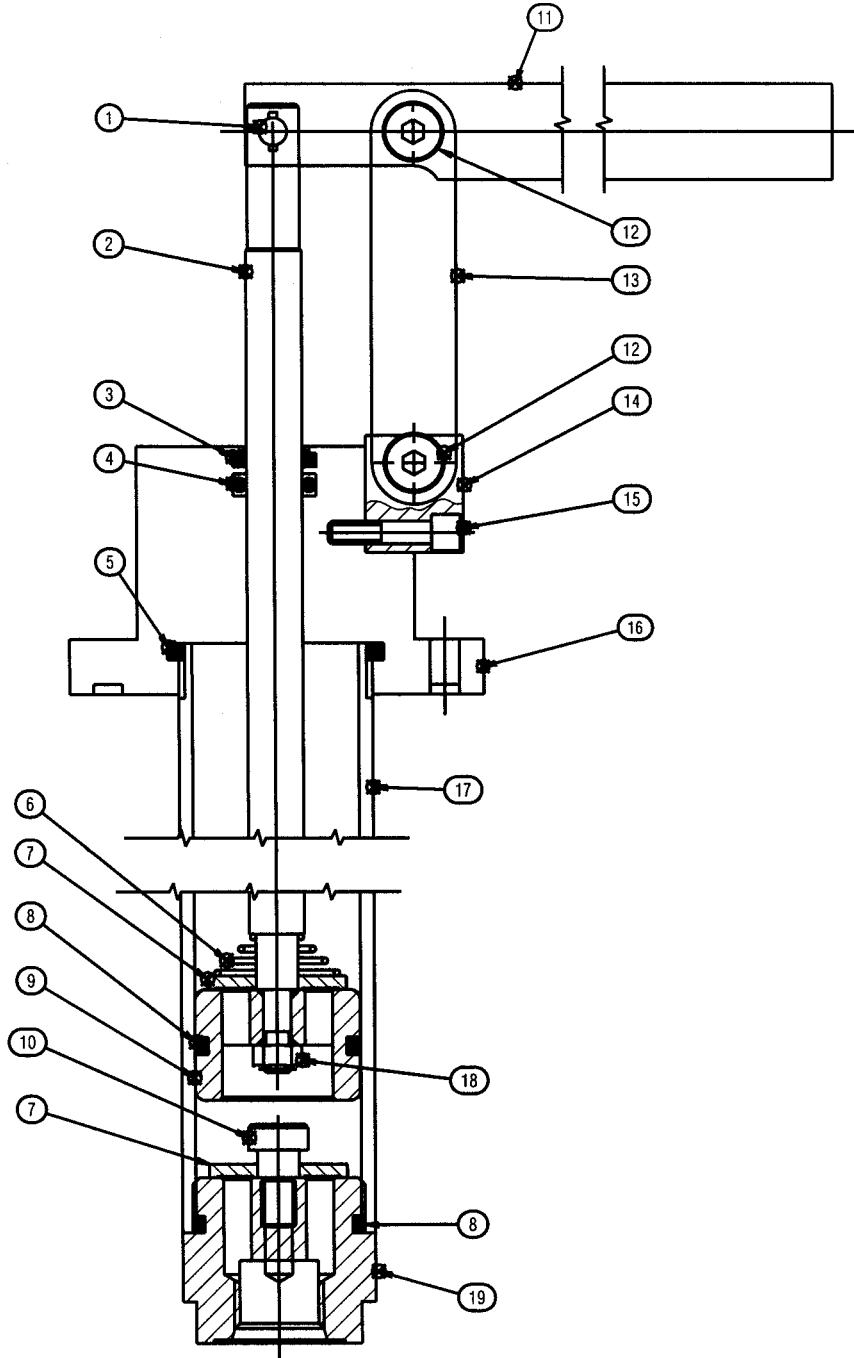
When ordering Replacement Parts/Kits, please specify Model & Serial Number of your product.



ITEM	PART NUMBER	DESCRIPTION	QTY
1	TF-1105-06*180	Hose, #6 Push-lok	1
2	K-1780	Kit, Hold Down Assembly	1
3	K-2082	Kit, Wheel	2
4	Z-5379-02	Weldment, Hand Truck	1
◆ 5	HC-2171	Hand Pump (Viton)	1
	HK-3715	Kit, Hand Pump Seal (Viton)	1
7	TF-1105-06*180	Hose, #6 Push-lok	1
6	HC-2078	Filter Element	1
8	TF-1105-08*180	Hose, #8 Push-lok	1
9	Z-2031	Assembly, Pickup Tube	1
Not Shown	N-2052-06	Tube Expander	1

◆ See Pages – for HC-2171 and Parts List information.

HC-2171 Hand Pump



HC-2171 (Viton Fluid) Hand Pump

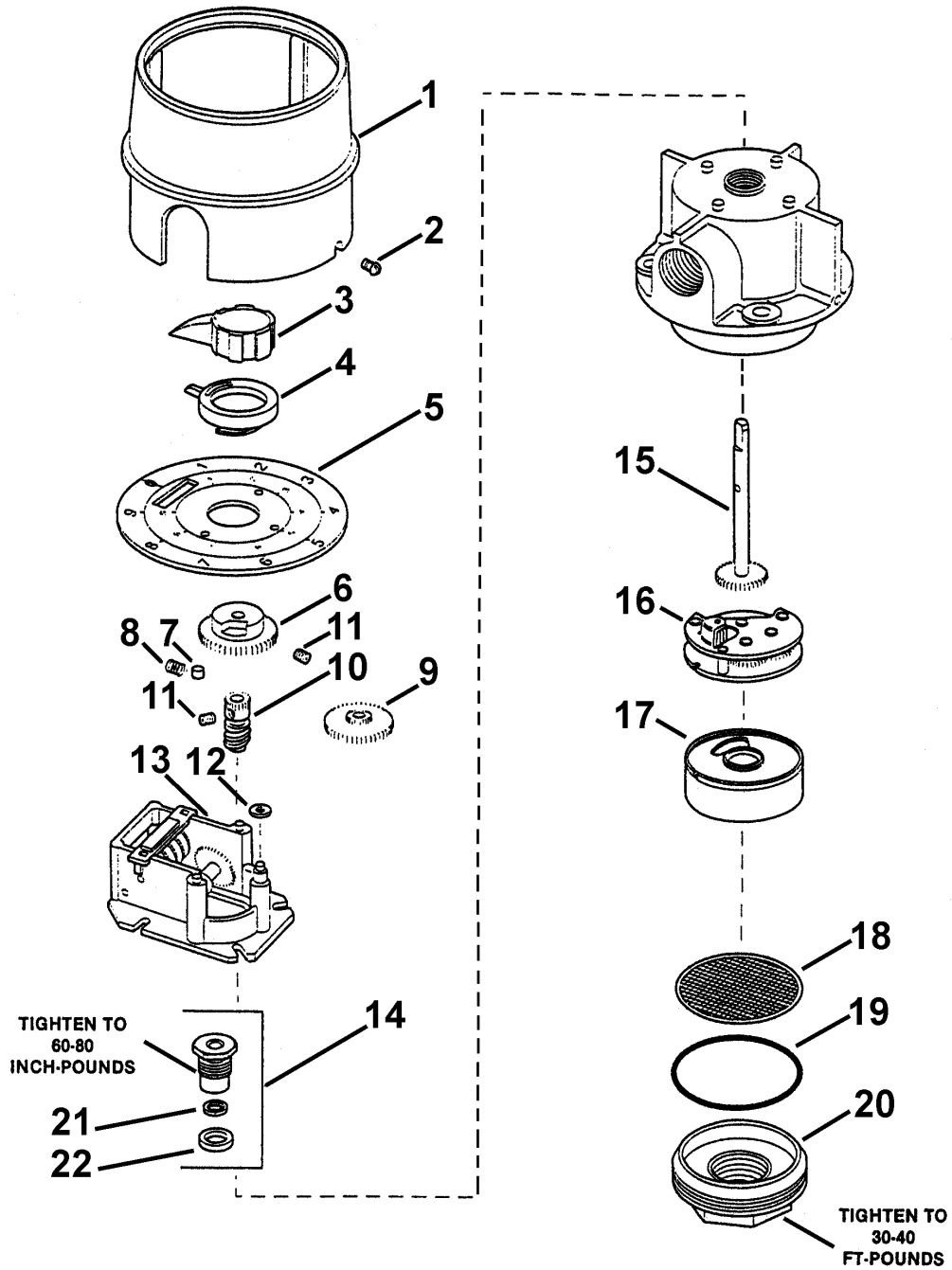
When ordering Replacement Parts/Kits, please specify Model & Serial Number of your product.

ITEM	PART NUMBER	DESCRIPTION	QTY
2	CXD-020004-004	Piston Rod	1
6	CENT-TA-2098	Spring	1
7	CXD-020004-006	Flapper	2
10	09-AHDF-06-18 x 04	Shoulder Screw	1
14	CXD-020004-009	Mounting Block	1
15	09-ADDF-0J-32 x 14	Socket Head Cap Screw	1
16	CXD-020004-002	Cap & Mounting Flange	1
17	CXD-020004-003	Tube	1
18	08-ADFH-04-28	Prevailing Locknut	1
19	CXD-020004-001	End Cap, Blind End	1
	HK-3715	Kit, Pump Seal Replacement; consists of:	1
3		Wiper, Viton	1
4		O-ring, Viton	1
5		O-ring, Viton	1
8		O-ring, Viton	2
9		Piston	1
	HK-3717	Kit, Handle Replacement; consists of:	1
1		Pin Linkage Assembly	1
11		Pump Handle	1
12		Pin Linkage Assembly	2
13		Strap	2

Parts List

Totalizer Option

When ordering Replacement Parts/Kits, please specify Model & Serial Number of your product.



Parts List

Totalizer Option

When ordering Replacement Parts/Kits, please specify Model & Serial Number of your product.

ITEM	FLUID	PART NUMBER	DESCRIPTION
1	N/A	66871-13	Shroud
2	N/A	66871-5	Screw (2)
3	N/A	242912	Knob Assembly
4	N/A	66871-53	Pointer
5	N/A	68410-26	Dial Assembly
6	N/A	66871-50	Cam
7	N/A	66871-4	Clutch Roller
8	N/A	66871-3	Spring
9	N/A	66871-17	Gear
10	N/A	66871-54	Worm
11	N/A	50541	Set Screw (2)
12	N/A	69304-23	Spacer
13	N/A	69795-3	Totalizer
14	MIL-L-23699, MIL-PRF-87257	N/A	N/A
15	N/A	66871-111	Spindle
16	N/A	66871-136	Gear Train Assembly
17	N/A	66871-25	Chamber Assembly
18	N/A	66871-92	Screen
19	MIL-L-23699, MIL-PRF-87257	HC-2007-223	O-ring
20	N/A	41204	Housing Cap
21	MIL-L-23699, MIL-PRF-87257	HC-2007-008	O-ring
22	MIL-L-23699, MIL-PRF-87257	HC-2007-001	O-ring