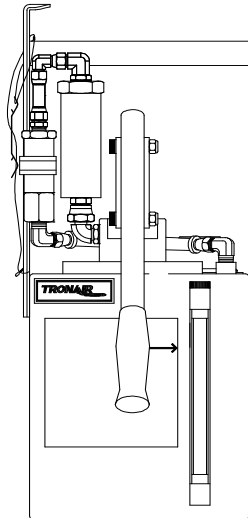




Operation & Service Manual



Model: 06-5072-6500
Fluid Service Unit

03/2009 – Rev. 02

Includes Illustrated Parts Lists

Tronair, Inc.

1740 Eber Road
Holland, Ohio 43528-9794
USA

Telephone: (419) 866-6301 • 800-426-6301

Fax: (419) 867-0634

Web Site: www.tronair.com E-mail: sales@tronair.com

TABLE OF CONTENTS

PAGE

1.0	General Description.....	1
2.0	Specifications	1
3.0	Features.....	1
4.0	Preparation For Use	1
5.0	Operation.....	2
6.0	Maintenance	2
7.0	Parts Lists & Illustrations	2

Model: 06-5072-6500
Fluid Service Unit

Revision	Date	Text Affected
01	11/2008	Original release
02	03/2009	Modified Parts List

**Model: 06-5072-6500
Fluid Service Unit**

This product can not be modified without the written approval of Tronair, Inc. Any modifications done without written approval voids all warranties and releases Tronair, Inc., its suppliers, distributors, employees, or financial institutions from any liability from consequences that may occur. Only Tronair OEM replacement parts shall be used.

1.0 GENERAL DESCRIPTION

The Tronair 06-5072-6500 Fluid Service Unit is a commercial unit with features added to support control of contamination in aircraft hydraulic systems through the servicing process.

There are three primary contaminants for hydraulic fluid; dirt, air, and water. The unit will remove dirt, metal, or other solid particles with a 2 micron filter located in the output (servicing) line. Re-circulating the fluid, prior to servicing, removes particulate contamination from the servicing line and couplings. This will also remove air, which will be visible in the transparent return hose. Pressure and vacuum valves in the reservoir fill cap minimize tank breathing and thereby control the entry of water into the fluid.

2.0 SPECIFICATIONS

Weight:	Approximately 27 lbs (12 kg) Dry
Height:	21 in (53.3 cm)
Width (Overall):	8 11/16 in (22 cm)
Depth (Overall):	13 1/8 in (33 cm)
Fluid:	MIL-PRF-83282
Filtration:	2 micron inline filter with replaceable element
External Hose:	15 ft (4.6 m) 0.25 in (6.35 mm) I.D.
Reservoir:	Sealed, 2 ga (7.6 liter) capacity, stainless steel tank, with carrying handle
Pump:	4 cubic in (65.5 cu cms) per stroke (cycle). Pressure relief set at 45 psi (3 bar)

3.0 FEATURES

- 8 in (20.3 cm) sight glass for easy detection of fluid level
- Sealed fill cap with pressure relief and vacuum breaker valves
- Transparent return line for purging air from system prior to servicing aircraft

4.0 PREPARATION FOR USE

The unit is shipped fully assembled with the exception of customer supplied quick-disconnect couplings. Only the following steps are required to make it operational.



CAUTION!

Use only the type of fluid for which the unit is labeled. Using other fluids will cause contamination and seal deterioration.

1. Install the applicable quick-disconnect couplings to the service hose and unit
2. Connect the pressure hose to the relief valve coupling
3. Remove the fill cap and fill reservoir to maximum fill arrow

NOTE: Filling must be accomplished in a dry area to control water contamination.

4. Stroke hand pump several cycles to purge air from the service line

5.0 OPERATION

The Fluid Service Unit has a two inch fill cap for gravity filling from one quart or one gallon cans. The unit can also be filled with a pressure fill unit through the aircraft quick-disconnect coupling.

NOTE: Remove the fill cap from the unit to vent the reservoir when filling with a pressure fill unit.

Filling must be accomplished in a dry area. The fill cap must always be kept securely closed when the reservoir is not being filled. The cap is equipped with a dual check valve to prevent humid air from contaminating the fluid. One portion of the check valve prevents the dry air in the reservoir from escaping until internal pressure reaches 5 psi (0.34 bar). The second portion of the valve prevents moist air from entering the reservoir until a vacuum of approximately 0.5 (1/2) psi (0.034 bar) is created. This fill cap automatically vents the unit to allow fluid to be dispensed but greatly limits the exchange of air with the atmosphere during daily temperature changes.

To Use the Fluid Service Unit:

1. Stroke the pump several times prior to each servicing operation. Check to see that no air bubbles are visible in the clear hose that is returning fluid to the reservoir. If the pumps action is spongy, re-circulate the fluid using full strokes to eliminate air in the pump. The pump handle should stay completely down when released.

6.0 MAINTENANCE

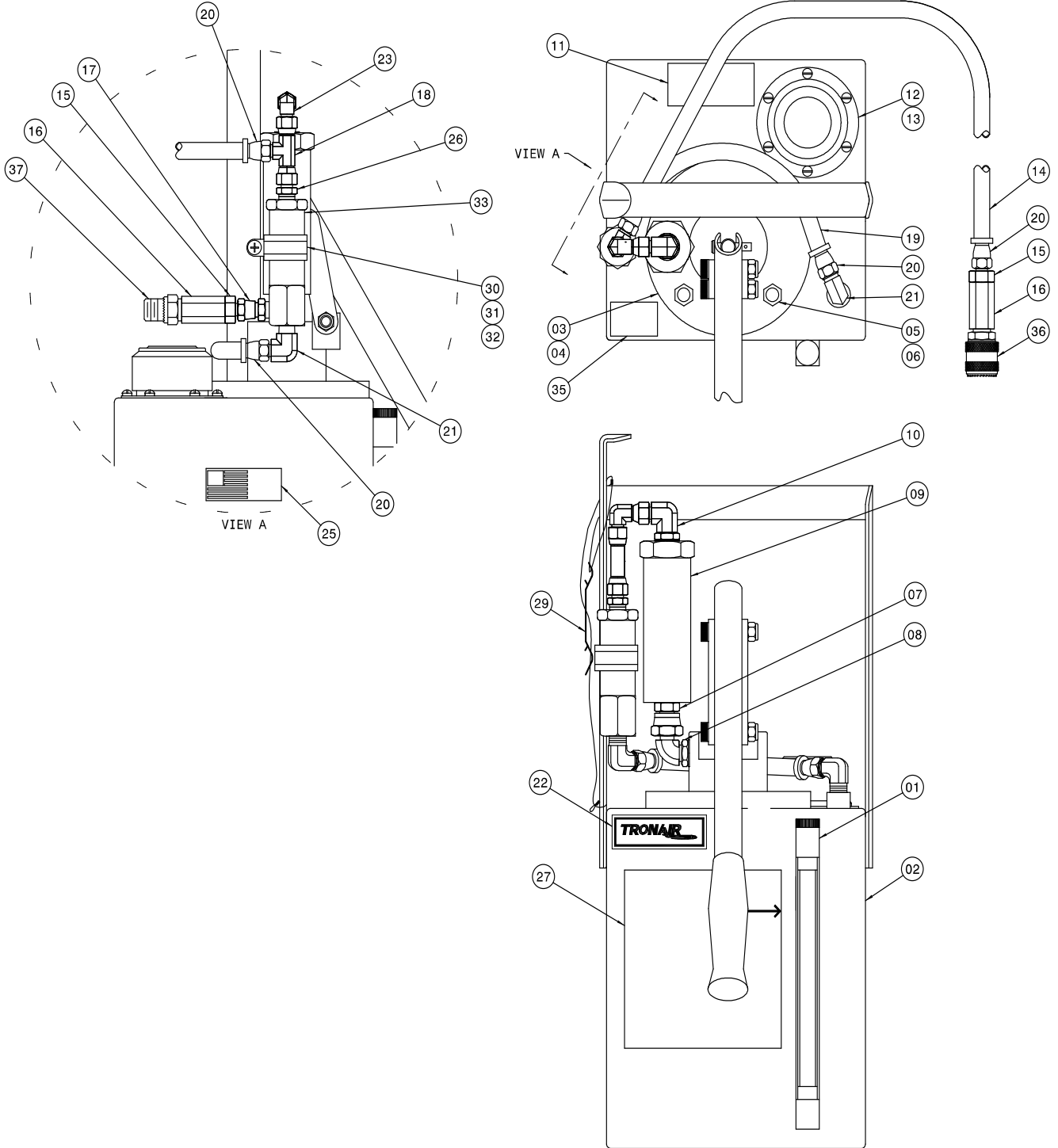
- The filter is of a non-bypass design with a replaceable element. As the filter element becomes clogged, higher handle force may be required for a given flow rate. High handle force while in a re-circulating or other "free flow" condition indicates the need for filter element replacement.
- DO NOT force the pump handle when a clogged filter element is suspected.
- It is best to set up a filter maintenance schedule based on usage and actual fluid samples. For units with low usage, the filter element should be changed at least once annually.

7.0 PARTS LISTS & ILLUSTRATIONS

Reference Pages 4 to 6 for Replacement Parts and Kits available.

Parts List

When ordering Replacement Parts/Kits, please specify Model & Serial Number of your product.



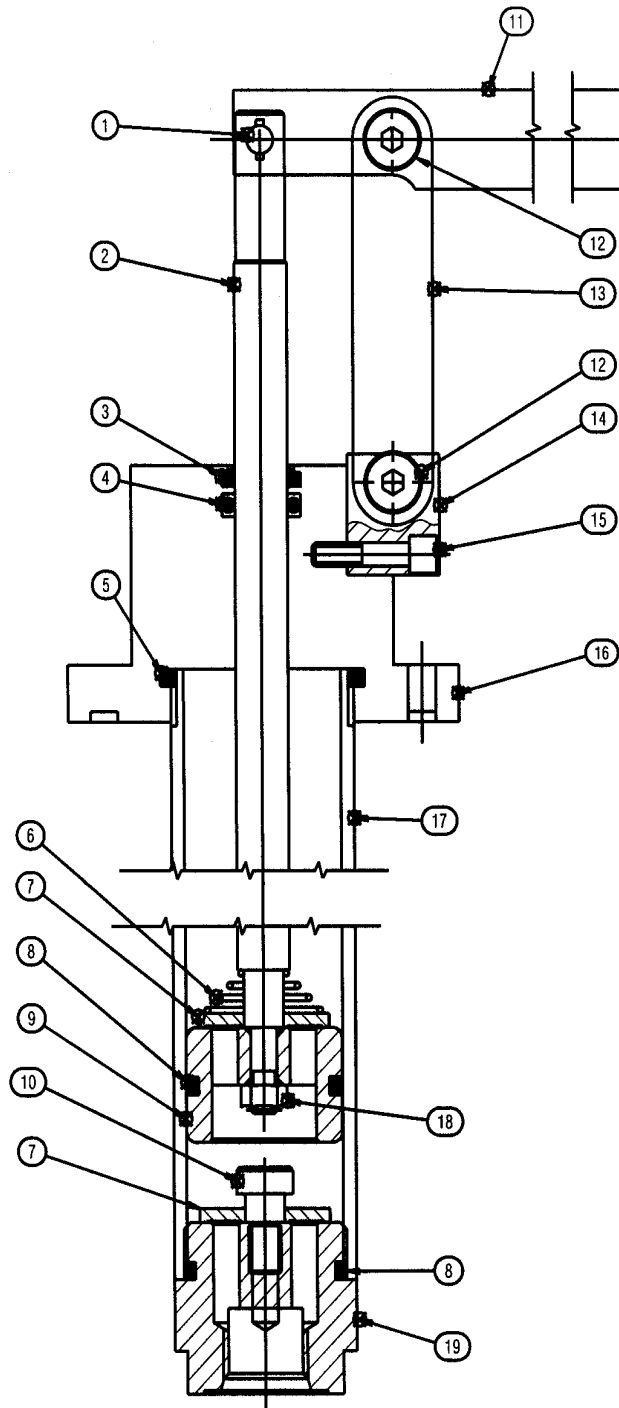
Parts List

When ordering Replacement Parts/Kits, please specify Model & Serial Number of your product.

ITEM	PART NUMBER	DESCRIPTION	QTY
1	HC-1382-08	Gauge, Sight	1
2	Z-6972	Weldment, 2 gallon (7.6 lt) Container	1
3	HC-2195 (See Page6)	Pump, Hand (Mineral Base)	1
5	G-1463-1070	Nut, 3/8-16 Acorn Hex	4
6	G-1250-1070N	Flatwasher, 3/8 Narrow	4
7	N-2036-03-S-B	Swivel, Female 37°	1
8	N-2001-08-S-B	Elbow, Straight Thread	1
9	HC-2141	Filter, In-Line (Viton)	1
10	N-2001-05-S-B	Elbow, Straight Thread	1
11	V-1101	Label, MIL-PRF-83282	1
12	HC-2166	Filler-Breather	1
13	G-1157-103506	Screw, #10-32 Pan Hd Crs Rec	6
14	TF-1047-01*180	Hose, Gray Push-Lok, ¼ ID	1
15	N-2007-05-S-B	Connector, STR Thread	2
16	N-2836-06	Adaptor, STR Thread	2
17	N-2030-01-S	Swivel, Female	1
18	N-2835-04	Tee, Swivel	1
19	TF-1136-10*10.5	Hose, Vinyl Tubing, 3/8 OD x ¼ ID	1
20	N-2026-01-S	Swivel, JIC 37°	4
21	N-2005-04-S	Elbow, Male	2
22	V-1197	Label, Tronair	2
23	N-2002-03-S	Elbow, Swivel Nut	1
24	V-1003	Lable, Serial No	1
25	V-1001	Label, Made In USA	1
26	N-2009-04-S	Connector, Male	1
27	V-1990	Label, Operation	1
29	Z-5677	Assembly, Can Opener with Lanyard	1
30	G-1497-105006	Screw, RD HD CRS REC Stainless, ¼ - 20	1
31	G-1501-1050	ESN, Stainless, ¼ - 20	1
32	H-1721-13	Clamp	1
33	HC-2449	Valve, Adjustable Relief	1
35	V-2290	Label, Relief Setting	1
36	N-2842	Coupling, QD	1
37	N-2843	Bulkhead, Half	1

Parts List

HC-2195 (Mineral Base) Hand Pump



Parts List

HC-2195 (Mineral Base) Hand Pump

When ordering Replacement Parts/Kits, please specify Model & Serial Number of your product.

ITEM	PART NUMBER	DESCRIPTION	QTY
2	CXD-020004-004	Piston Rod	1
6	CENT-TA-2098	Spring	1
7	CXD-020004-006	Flapper	2
9	CXD-020004-005	Piston	1
10	09-AHDF-06-18 x 04	Shoulder Screw	1
13	512-000	Strap	2
14	CXD-020004-009	Mounting Block	1
15	09-ADDF-0J-32 x 14	Socket Head Cap Screw	2
16	CXD-020004-002	Cap & Mounting Flange	1
17	CXD-020004-003	Tube	1
18	08-ADFH-04-28	Prevailing Locknut	1
19	CXD-020004-001	End Cap, Blind End	1
Not Shown	CXD-020057-001	Grip, Handle	1
	HK-3682	Kit, Pump Seal Replacement; consists of:	
3		Wiper, Urethane	1
4		O-ring, BUNA	1
5		O-ring, BUNA	1
8		O-ring	2
	HK-3768	Kit, Handle Replacement; consists of:	
1		Pin Linkage Assembly	1
11		Pump Handle	1
12		Pin Linkage Assembly	2
Not Shown	K-3659	Kit, Filter Element; consists of:	
	HC-2007-011	O-ring, Series 2	1
	HC-2014-914	O-ring, Series 3	1
	HC-2142	Element, Filter	1