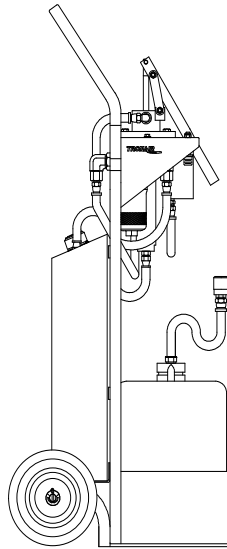




Operation & Service Manual



**Model: 06-5073-0800
Fluid Servicing Unit**



04/2010 - Rev. 01

Includes Illustrated Parts List

1740 Eber Rd
Holland, OH 43528-9794
USA

Tronair, Inc.
www.tronair.com
Email: sales@tronair.com

Phone: (419) 866-6301
800-426-6301
Fax: (419) 867-0634

REVISION
01

DATE
04/2010

TEXT AFFECTED
Original release



TABLE OF CONTENTS

PAGE

1.0	GENERAL DESCRIPTION.....	1
2.0	SPECIFICATIONS.....	1
3.0	FEATURES.....	1
4.0	PREPARATION FOR USE.....	1
5.0	OPERATION.....	1
6.0	MAINTENANCE	1
6.1	TIRES.....	1
6.2	FILTERS	1
7.0	TOTALIZER OPTION	1
8.0	PARTS LIST	1

APPENDIX I Declaration of Conformity

This product can not be modified without the written approval of Tronair, Inc. Any modifications done without written approval voids all warranties and releases Tronair, Inc., its suppliers, distributors, employees, or financial institutions from any liability from consequences that may occur. Only Tronair OEM replacement parts shall be used.

1.0 GENERAL DESCRIPTION

The Fluid Reservoir Service Unit is a compact unit primarily designed to provide a source of clean fluid. It is not intended for performing any pressure testing tasks.

2.0 SPECIFICATIONS

Fluid: MIL-L-23699

Maximum Pressure: 200 psi (13.8 bar)

Filter: 2 Micron

Dimensions: Width: 21 in (53.4 cm)
Length: 20 1/8 in (51 cm)
Height: 45 1/2 in (116.8 cm)

Weight: 50 lbs (22.7 kg)

Pump Displacement: 4.4 cubic in/stroke (72.1 cc/stroke)

3.0 FEATURES

- 4 gallon reservoir
- 5 gallon detachable waste tank
- Inline totalizer, pint graduations
- Supply and return couplings with stow points
- 7 ft supply hose
- Hose hanger

4.0 PREPARATION FOR USE

The unit is shipped fully assembled



CAUTION!

Only use the type of fluid for which the unit is designed. Using other fluids will cause contamination and seal deterioration.

1. Fill reservoir with appropriate fluid. Remove service hose coupling, aim hose into empty container.
2. Operate hand pump several times to fill line and purge air. Re-install coupling at hose end.

5.0 OPERATION

To Use the Unit:

1. Make sure reservoir is filled.
2. Securely attach hose to aircraft.
3. Operate pump handle at a slow to moderate pace with even pressure.

NOTES: 1. *It is not necessary to operate pump rapidly. The pump moves a large volume of oil per stroke and will fill a reservoir much faster than standard pumps.*
2. *A slow movement of the pump handle with a steady pressure works best.*

When Service Has Been Completed:

1. Disconnect hose from aircraft.
2. Stow service hose to appropriate bulkhead stow point.

6.0 MAINTENANCE

6.1 TIRES

Maintain 45 to 50 psi (3.1 to 4.4 bar) tire pressure.

6.2 FILTERS

The filter is of a non-bypass design. This means that, if filter becomes clogged, no fluid will pass to the aircraft **and** a high handle force will result. If this happens, service the filter. **Do not force** the pump handle, as damage to unit components could result. The 2 micron main filter element is of a throw-away design and is **not cleanable**. Refer to Page 5 for replacement filter element kit.

7.0 TOTALIZER OPTION

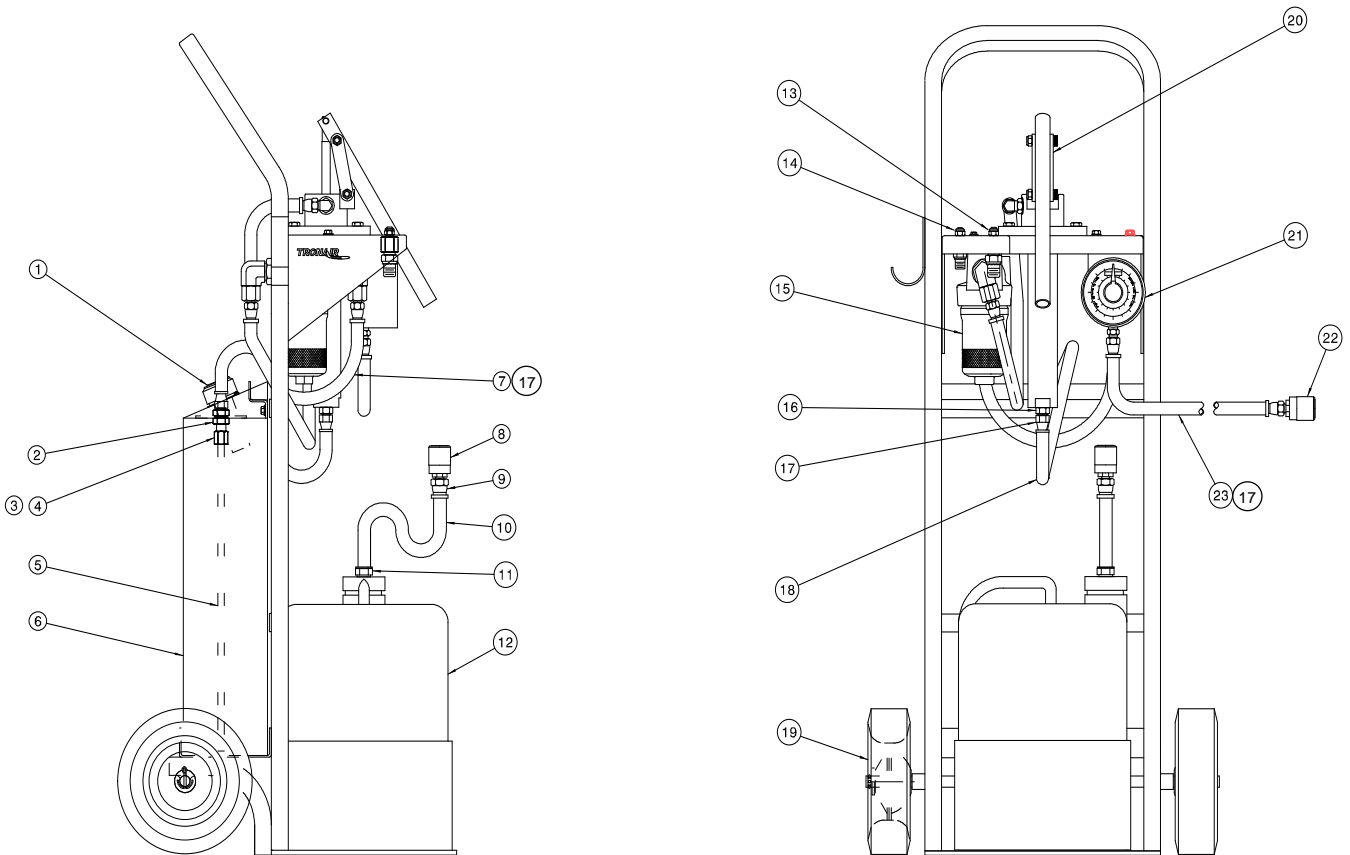
The Totalizer indicates amount of fluid dispersed. After each use, the pointer must to reset to zero for an accurate reading during next use. Refer to Parts List for replacement parts.

8.0 PARTS LIST

Reference following pages for ordering information of Replacement Parts and Kits.

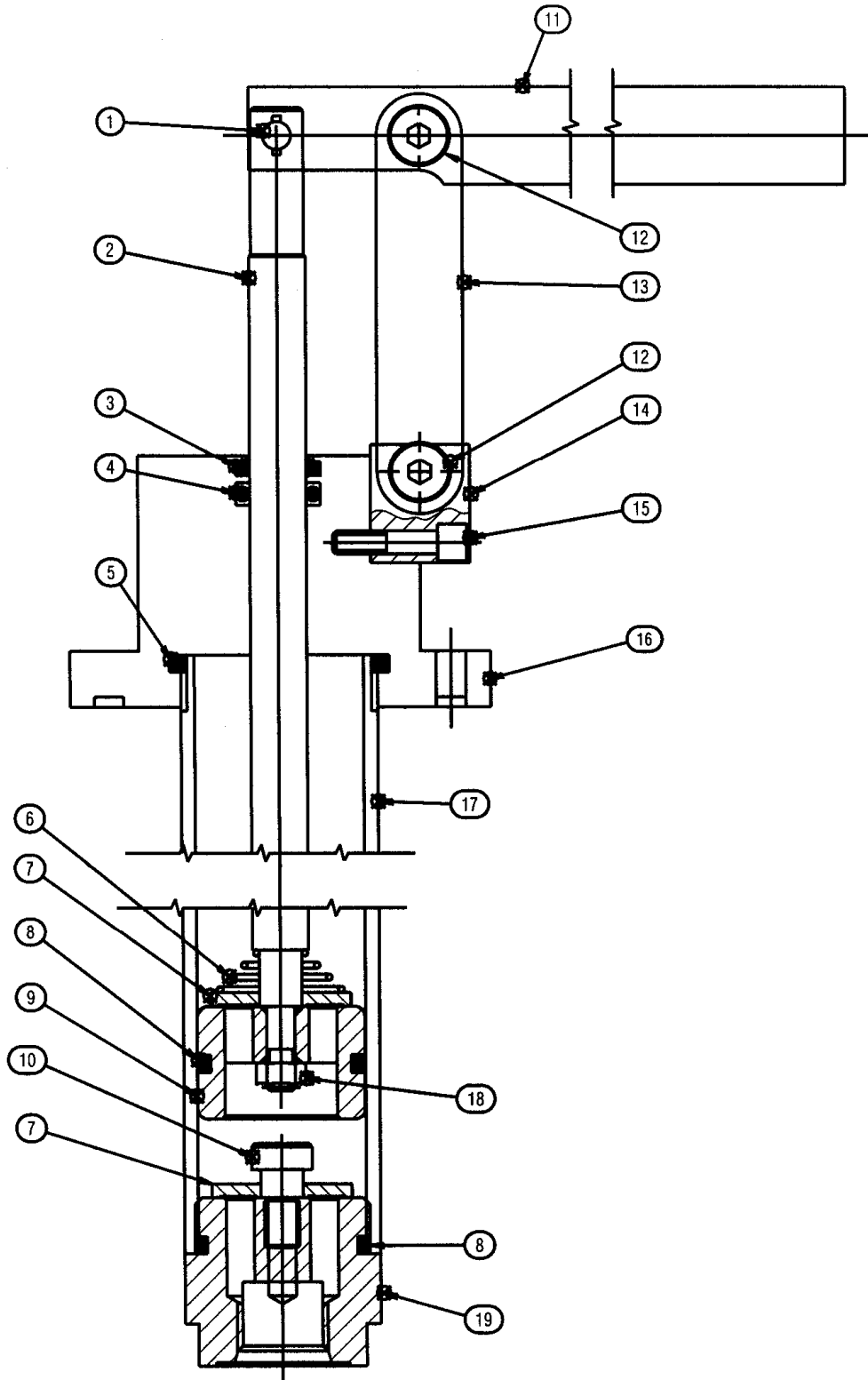
Parts List

When ordering Replacement Parts/Kits, please specify Model & Serial Number of your product.



ITEM	PART NUMBER	DESCRIPTION	QTY
1	HC-2498	Filler Breather, Tank	1
2	N-2061-03-S	Union, Bulkhead	1
3	N-2019-05-SS	Sleeve, Stainless	1
4	N-20005-05-S	Nut, Tube	1
5	TR-2154	Tube, Pick-Up	1
6	H-3320	Tank, Reservoir	1
7	TF-1105-06*20.0	Hose, Push-Lok 3/8 ID	1
8	N-2422-01	Coupling, Half	1
9	N-2026-05-B	Swivel, 08 - 1/2 Hose	1
10	TF-1105-08*18.0	Hose, Push-Lok 1/2 ID	1
11	N-2800-11-B	Fitting, Male Pipe 3/4 NPT - 1/2 Hose	1
12	HC-2273	Container, 5 gal	1
13	N-2877-02	Bulkhead, Half	1
14	N-2877-01	Bulkhead, Half	1
15	HC-1826	Assembly, Filter	1
16	N-2007-09-S-V	Connector, STR THD	1
17	N-2026-03-B	Swivel, JIC 37° 3/8 Hose	8
18	TF-1105-06*36.0	Hose, Push-Lok 3/8 ID	1
19	U-1001-02	Wheel	2
20	HC-2171	Pump, Hand	1
21	HC-2502	Totalizer	1
22	N-2422-02	Coupling, Half	1
23	TF-1105-06*84.0	Hose, Push-Lok 3/8 ID	1

HC-2156/HC-2157/HC-2171 Hand Pump



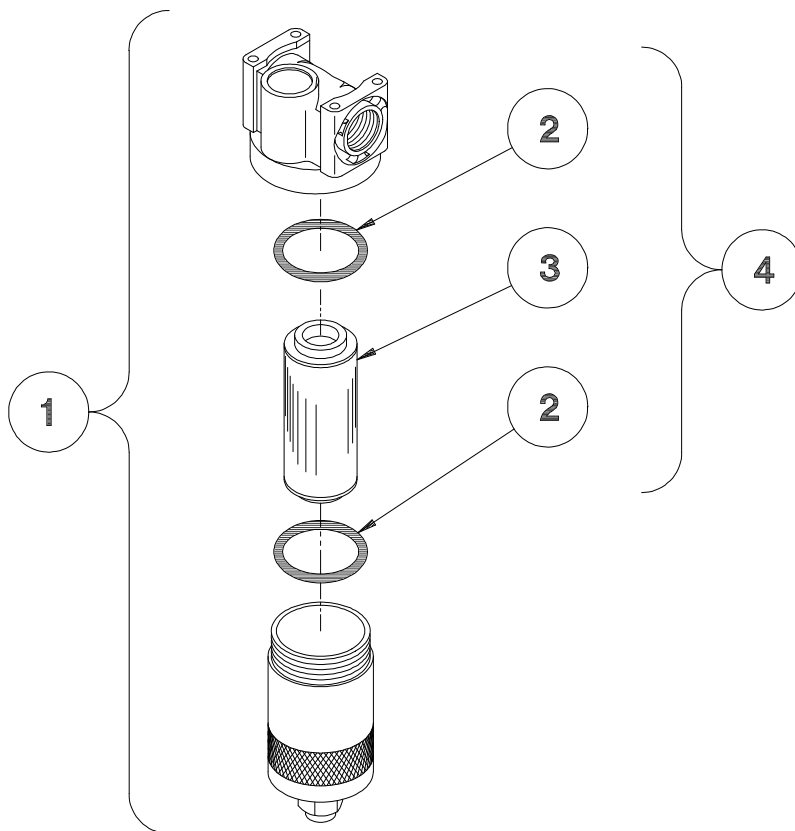
Parts List

When ordering Replacement Parts/Kits, please specify Model & Serial Number of your product.

ITEM	PART NUMBER	DESCRIPTION	QTY
2	CXD-020004-004	Piston Rod	1
6	CENT-TA-2098	Spring	1
7	CXD-020004-006	Flapper	2
9	CXD-020004-055	Piston	1
10	09-AHDF-06-18 x 04	Shoulder Screw	1
13	512-000	Strap	2
14	CXD-020004-009	Mounting Block	1
15	09-ADDF-0J-32 x 14	Socket Head Cap Screw	1
16	CXD-020004-002	Cap & Mounting Flange	1
17	CXD-020004-003	Tube	1
18	08-ADFH-04-28	Prevailing Locknut	1
19	CXD-020004-001	End Cap, Blind End	1
	HK-3717	Kit, Handle Replacement; consists of:	1
1		Pin Linkage Assembly	1
11		Pump Handle	1
12		Pin Linkage Assembly	2
	HC-2171 (MIL-L-23699, MIL-PRF-87257)		
	HK-3715	Kit, Pump Seal Replacement; consists of:	1
3		Wiper, Viton	1
4		O-ring, Viton	1
5		O-ring, Viton	1
8		O-ring, Viton	2

Filter Assembly

When ordering Replacement Parts/Kits, please specify Model & Serial Number of your product.



ITEM	FLUID	PART NUMBER	DESCRIPTION	QTY
1	MIL-L-23699/MIL-PRF-87257	HC-1826	Assembly, Filter	1
3	All Mineral Base	HC-1482	Element, Filter	1

Filter Replacement Parts

When ordering Replacement Parts/Kits, please specify Model & Serial Number of your product.

ITEM	FLUID	PART NUMBER	DESCRIPTION	QTY
2	All Mineral Base	HC-2007-142	O-Ring, Series 2 (VITON)	2
4	All Mineral Base	K-3098	Kit, Filter Element	1

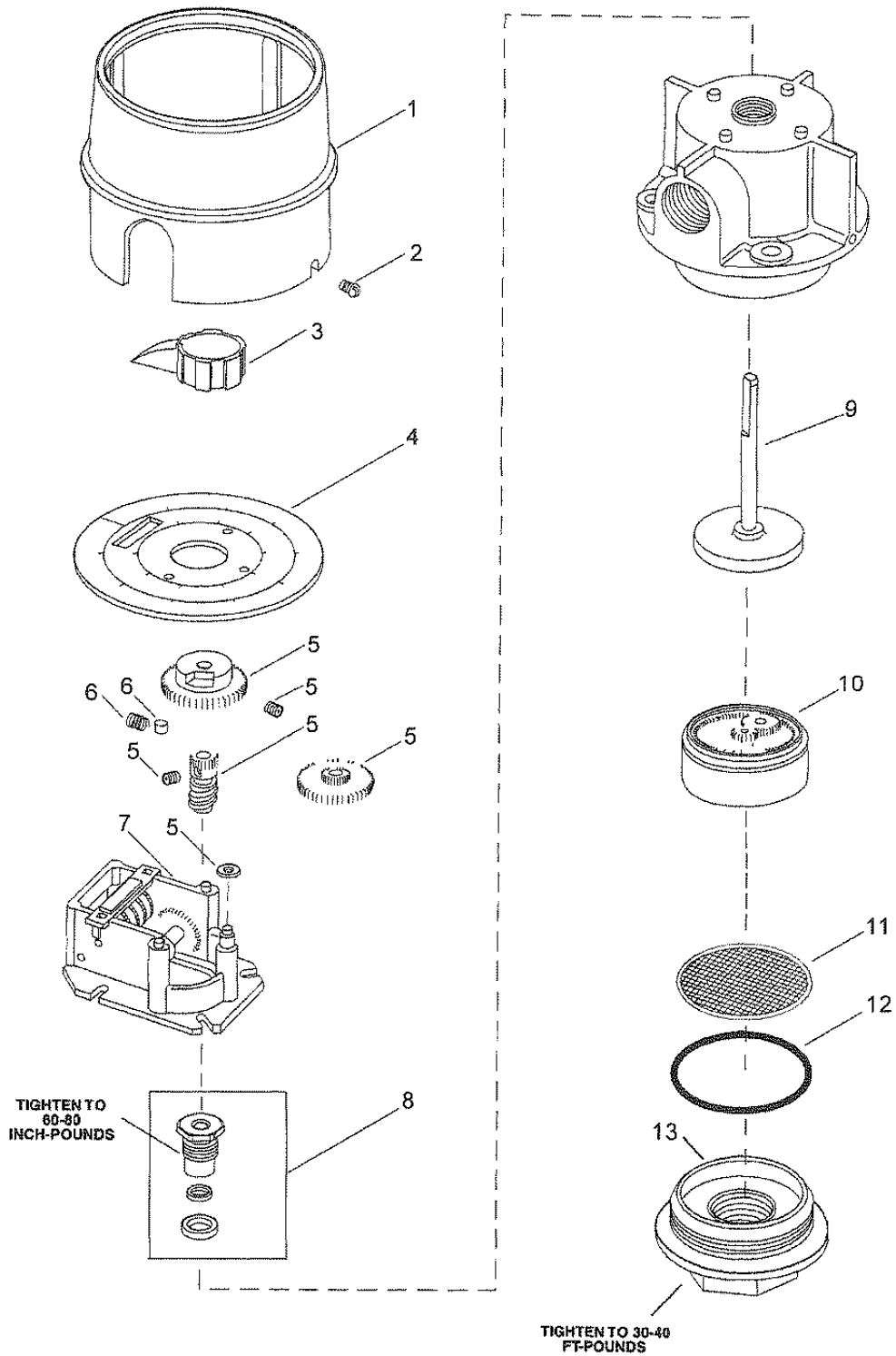
This page left blank intentionally.

Totalizer Option

When ordering Replacement Parts/Kits, please specify Model & Serial Number of your product.

HC-2502 (MIL-H-23699, MIL-PRF-87257)

Totalizer Meter





Totalizer Option

When ordering Replacement Parts/Kits, please specify Model & Serial Number of your product.

ITEM	PART NUMBER	DESCRIPTION
1	66871-13	Shroud
2	6687-5 (4)	Shroud Screw
3	242912	Knob Assembly
4	66871-117	Dial Assembly
5	272156	Gear Kit
6	272155	Clutch Kit
7	66871-153	Register Assembly
8	237388	Packing Kit
9	66871-99	Upper Drive Pawl Worm Gear
10	66871-25	Chamber & Piston Assembly
11	66871-92	Screen
12	O-Ring	66871-12
13	41204	Housing Cap



APPENDIX I

**Declaration
Of
Conformity**



DECLARATION of CONFORMITY

The design, development and manufacture is in accordance with European Community guidelines

Fluid Servicing Unit
06-5073-0800

Relevant provisions complied with by the machinery:
2006/42/EC

Identification of person empowered to sign on behalf of the manufacturer:

A handwritten signature in black ink that reads "David L. Kidd". The signature is written in a cursive style and is positioned above a horizontal line.

Quality Assurance Representative