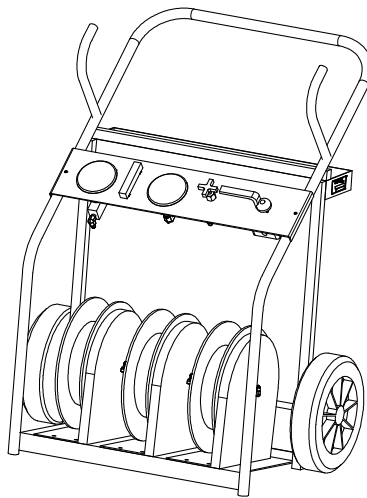




Operation & Service Manual



Model: 06-5076-9400 Brake Bleed Cart

01/2014 – Rev. 02

Includes Illustrated Parts Lists

REVISION
01
02

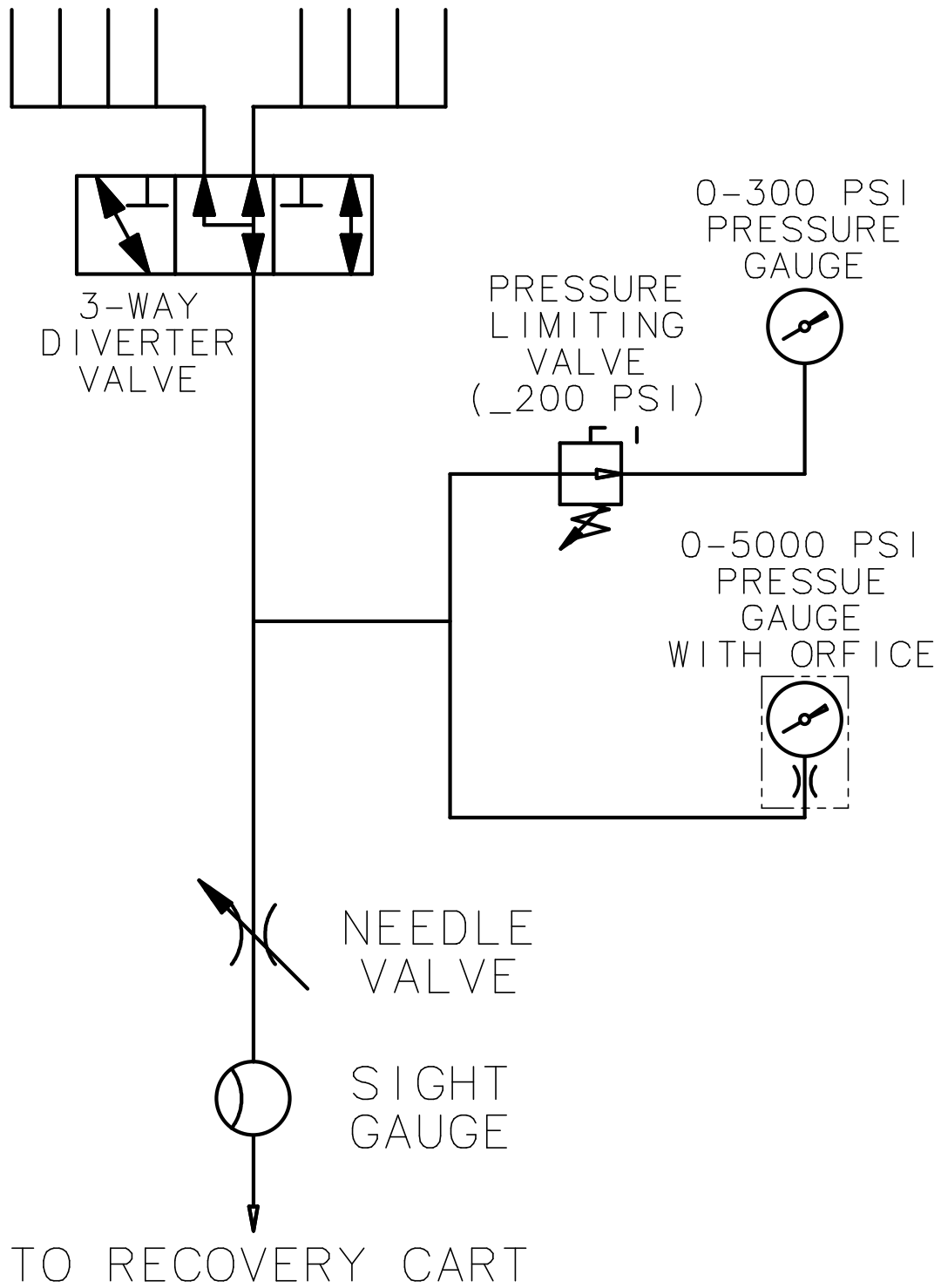
DATE
06/2011
01/2014

TEXTAFFECTED
Original Release
Modified Parts List

TABLE OF CONTENTS

| | <u>PAGE</u> |
|----------------------------------|-------------|
| Hydraulic Schematic..... | 1 |
| 1.0 SPECIFICATIONS/FEATURES..... | 2 |
| 2.0 OPERATION..... | 2 |
| 2.1 BRAKE BLEEDING | 2 |
| 2.2 BRAKE TEST..... | 2 |

FIGURE 1 – Hydraulic Schematic



This product can not be modified without the written approval of Tronair, Inc. Any modifications done without written approval voids all warranties and releases Tronair, Inc., its suppliers, distributors, employees, or financial institutions from any liability from consequences that may occur. Only Tronair OEM replacement parts shall be used.

1.0 SPECIFICATIONS/FEATURES

The Tronair 06-5076-9400 Brake Bleed Cart was designed to allow for brake bleeding and measure brake pressures at the calipers.

- Weight: 90 lbs (40.8 kg)
- Dimensions: Length: 33.5 in (85.09 cm)
Width: 25.5 in (64.77 cm)
Height: 43 in (109.22 cm)
- Fluid: Phosphate Ester
- Gauges: 0-300 psi, ± 1% accuracy of full scale
0-5000 psi, ± 1% accuracy of full scale
- Sight Gauge
- Selector Valve
- Brake Adapters
- 30 ft Hose Assembly with Plug

2.0 OPERATION

CAUTION!



All brake maintenance to be performed in accordance to Aircraft Manufacturer's Maintenance Manual & Government Regulations, as applicable

2.1 BRAKE BLEEDING

1. Connect the hose provided with unit to the brake caliper per aircraft manufacturer procedure.



CAUTION!

Make sure sample valve on unit is closed and brake pressure is at zero.

2. Open sample valve.
3. Observe oil for air through sight gauge.
4. Close valve when all air is removed.

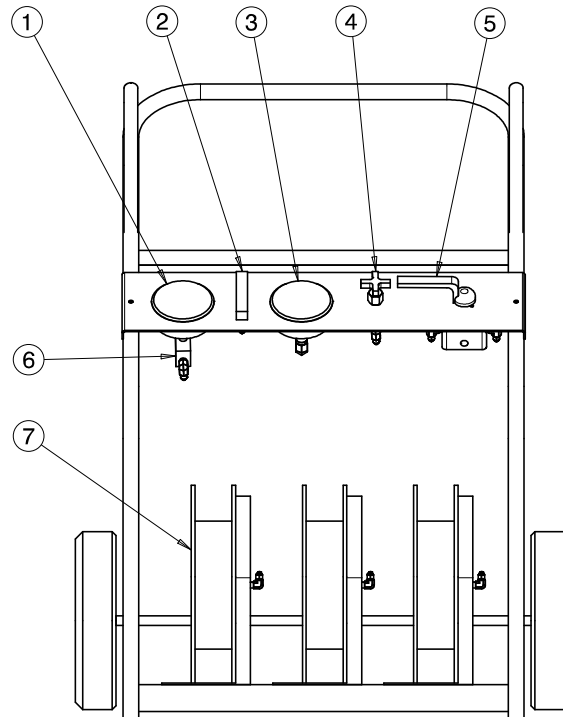
2.2 BRAKE TEST

1. Test per manufacturer's maintenance manual.
2. Use sample valve to relieve pressure prior to disconnecting hose.

NOTE: Gauge Cutout Valve is set to prevent Low Pressure Gauge from exceeding 300 PSIG

Parts List

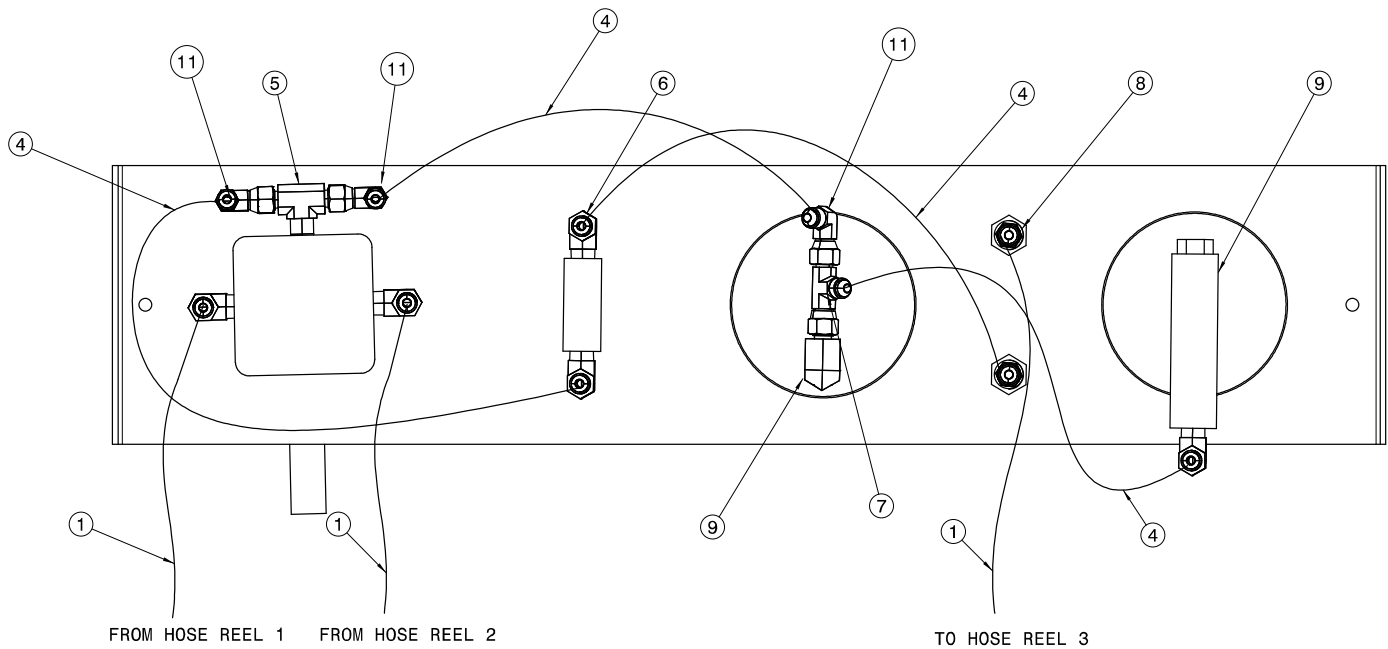
When ordering replacement parts/kits, please specify model, serial number and color of your unit.



| Item | Part Number | Description | Qty |
|------|-------------|------------------------------|-----|
| 1 | HC-1423 | Gauge, Pressure (0-300 psi) | 1 |
| 2 | HC-1383-03 | Gauge, Sight | 1 |
| 3 | HC-1399 | Gauge, Pressure (0-5000 psi) | 1 |
| 4 | HC-1081-02 | Valve, Needle | 1 |
| 5 | HC-2538 | Valve, 3-Way Director | 1 |
| 6 | HC-1855-01 | Valve, Gauge Cutout | 1 |
| 7 | H-3418 | Reel, Hose | 3 |

Parts List

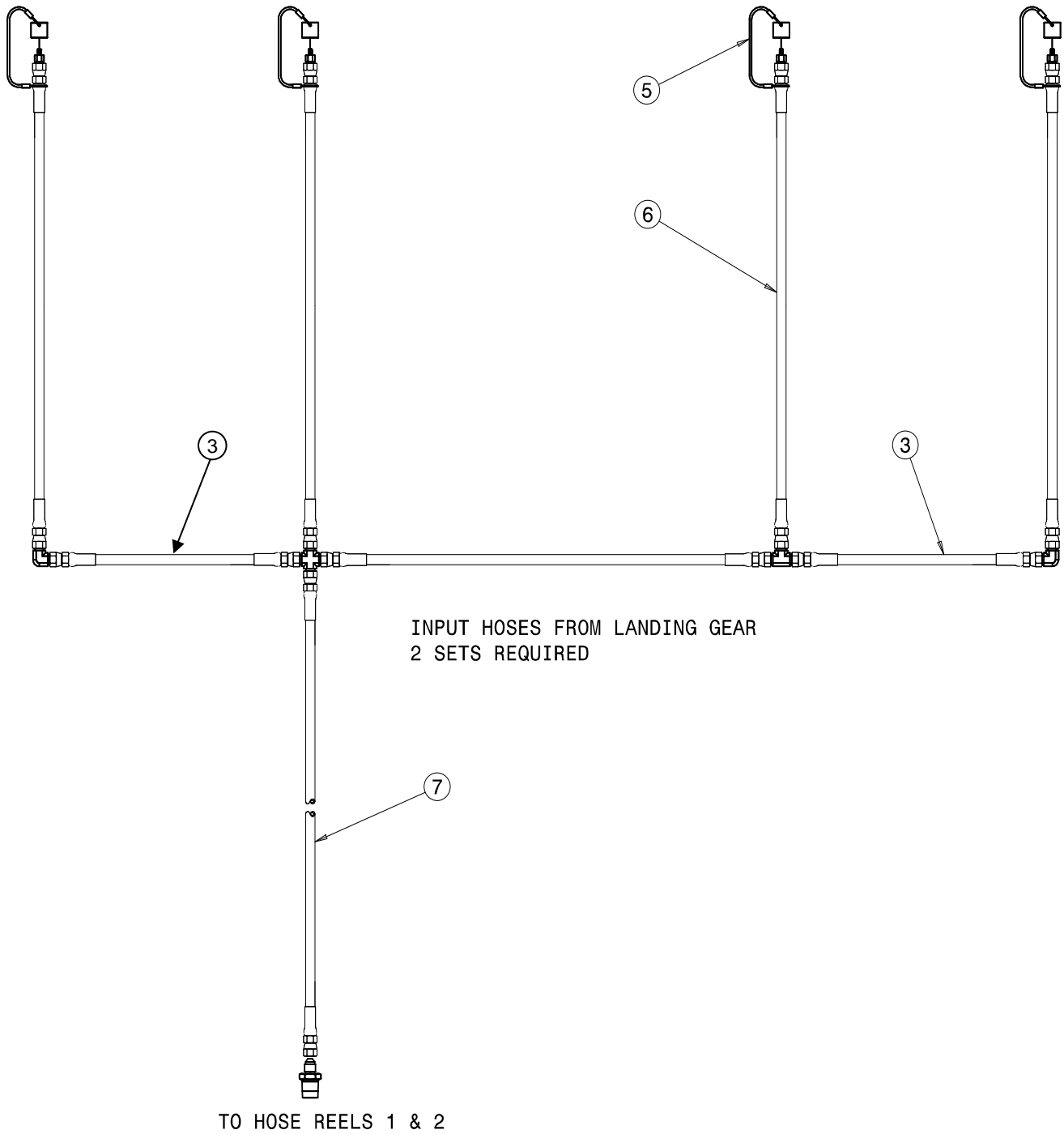
When ordering replacement parts/kits, please specify model, serial number and color of your unit.



| Item | Part Number | Description | Qty |
|------|-----------------|----------------------|-----|
| 1 | TF-1041-05*20.0 | Assembly, Hose | 4 |
| 4 | TF-1041-05*16.0 | Assembly, Hose | 3 |
| 5 | N-2018-04-S | Tee, Male Branch | 1 |
| 6 | N-2005-04-S | Elbow, Male | 5 |
| 7 | N-2016-03-S | Tee, Run, Swivel Nut | 1 |
| 8 | N-2009-03-S | Connector, Male | 2 |
| 9 | N-2006-04-S | Elbow, Female | 1 |
| 11 | N-2002-03-S | Elbow, Swivel Nut | 3 |

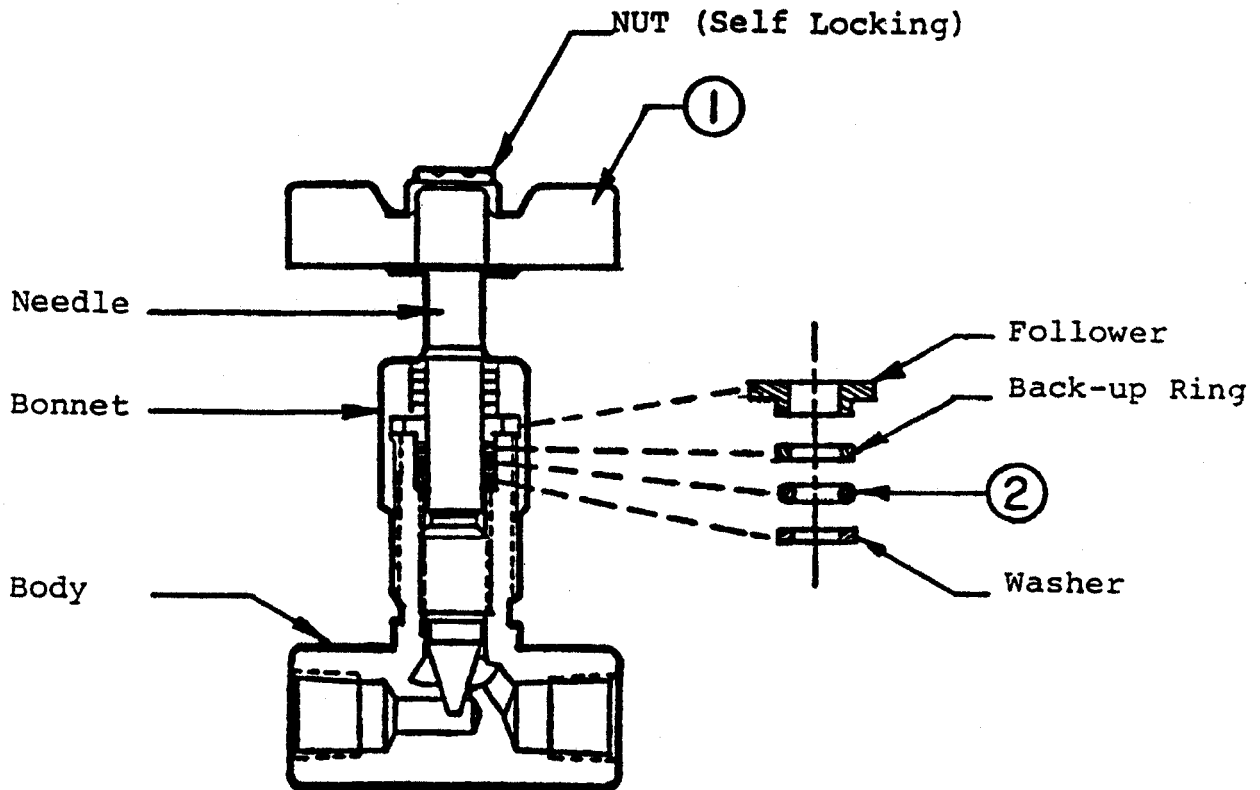
Parts List

When ordering replacement parts/kits, please specify model, serial number and color of your unit.



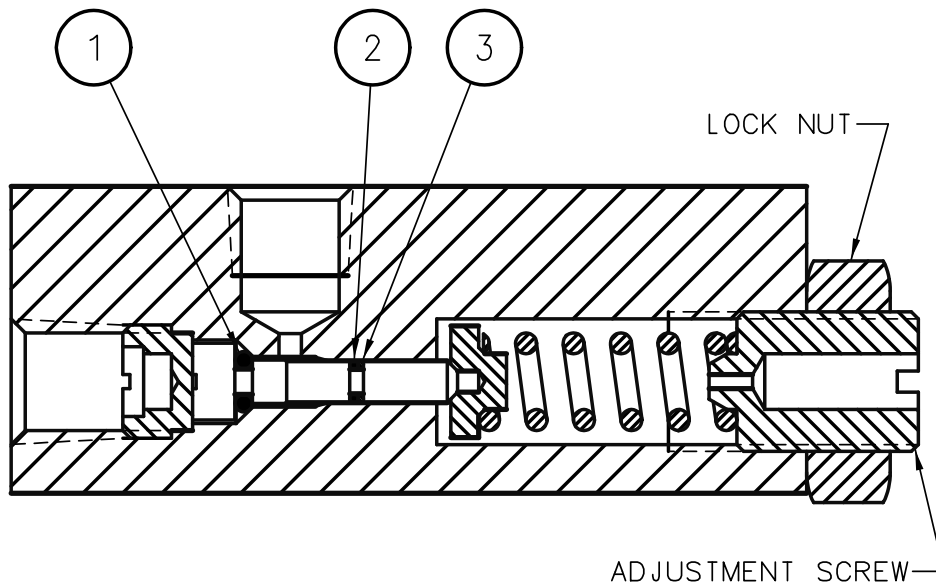
| Item | Part Number | Description | Qty |
|------|-----------------|--------------------|-----|
| 3 | TF-1041-05*09.9 | Assembly, Hose | 4 |
| 5 | K-4395 | Kit, Brake Adapter | 8 |
| 6 | TF-1041-05*18.0 | Assembly, Hose | 10 |
| 7 | TF-1041-05*120 | Assembly, Hose | 2 |

Parts List
Needle Valve Assembly
HC-1081-02



| Item | Part Number | Description | Qty |
|------|-------------|---------------|-----|
| 1 | HC-1082 | Handle, Valve | 1 |
| 2 | HC-2006-011 | O-Ring | 1 |

Parts List
Gauge Cutout Valve
HC-1855-01



| Item | Part Number | Description | Qty |
|------|---------------|--|-----|
| | K-3106 | Kit, Seal Replacement; consists of: | |
| 1 | HC-2030 | O-ring | 1 |
| 2 | HC-2031 | O-ring | 1 |
| 3 | HC-2032 | Ring, Backup | 1 |