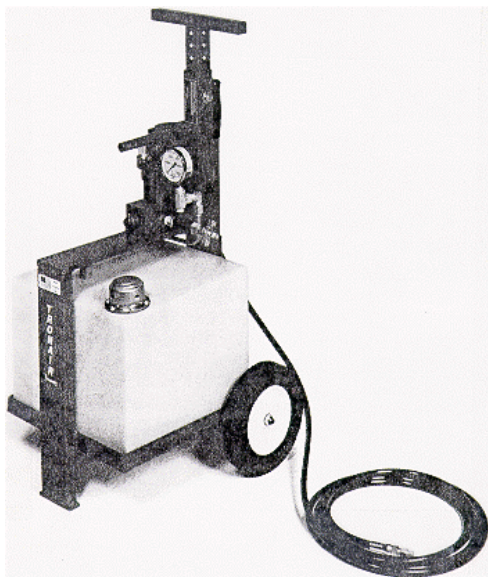




Operation & Service Manual



**Model: 06-8012-3600
Hydraulic Service Unit**

04/2000 – Rev. 08

Includes Illustrated Parts List

Tronair, Inc.

*1740 Eber Road
Holland, Ohio 43528-9794
USA*

Telephone: (419) 866-6301 • 800-426-6301

Fax: (419) 867-0634

Web Site: www.tronair.com E-mail: mail@tronair.com

Model: 06-8012-3600
Hydraulic Service Unit

TABLE OF CONTENTS

| | <u>PAGE</u> |
|----------------------------------|--------------------|
| 1.0 GENERAL DESCRIPTION..... | 1 |
| 2.0 SPECIFICATIONS | 1 |
| 3.0 FEATURES..... | 1 |
| 4.0 PREPARATION FOR USE | 1 |
| 5.0 OPERATION..... | 2 |
| PARTS LISTS & ILLUSTRATIONS..... | 3-6 |

Model: 06-8012-3600
Hydraulic Service Unit

1.0 GENERAL DESCRIPTION

The Tronair Hydraulic Service Unit (HSU) is a compact unit designed to provide a source of clean, pressurized fluid for filling reservoirs, bleeding brakes and other maintenance functions.

2.0 SPECIFICATIONS

| | |
|-------------------|-----------------------|
| Tank Capacity: | 8 gallons |
| Maximum Pressure: | 500/4000 PSIG |
| Fluid: | Hyjet IV/Skydrol 500B |
| Filtration: | 3 Micron |
| Weight: | 55 lbs. |

3.0 FEATURES

- 15 foot hose
- Pressure gauge
- Shut-off valve for component testing
- 4000 PSI hi-low pump provides high flow and high pressure capability

4.0 PREPARATION FOR USE

The HSU is shipped fully assembled and only the following steps are required to make the unit operational.

1. Service Reservoir: Fill reservoir with appropriate clean fluid.
2. Adjust handle height to suit.

Remove Air From HSU System By:

1. Close manual pump release screw. (Located at lower right corner of pump base block.)
2. Open shut-off valve. (Adjacent to pressure gauge.)
3. Flow fluid by actuating manual pump.

5.0 OPERATION

5.1 HSU USE

Follow the steps below:

1. Securely attach hose to the aircraft.
2. Close pump release screw.
3. Open shut-off valve.
4. Transfer hydraulic fluid by actuating the manual hydraulic pump.

When service has been completed:

1. Open pump release screw to relieve hydraulic pressure.
2. Disconnect hose from aircraft.
3. Install hose end dust plug.

5.2 COMPONENT TESTING

A shut-off valve has been provided to assure no back flow of fluid and therefore is to be closed after the required pressure has built up in the system.

Pressure is relieved by opening this shut-off valve and the pump release screw.

Model: 06-8012-3600
Hydraulic Service Unit

Parts List

(Reference Parts Illustration on Page 4.)

REPLACEMENT PARTS

| ITEM | PART NUMBER | DESCRIPTION | QTY |
|-------------|--------------------|--------------------|------------|
| 1 | HC-1084 | Assembly, Filter | 1 |
| 2 | Z-1218-02 | Frame | 1 |
| 3 | C-189 | Tank | 1 |
| 4 | U-1001-01 | Wheel | 2 |
| 5 | Z-1083-01 | Weldment, Handle | 1 |
| 6 | HC-1042 | Gauge, Pressure | 1 |
| * 7 | HC-1101-02 | Valve, Shut Off | 1 |
| 9 | HC-1030 | Breather | 1 |
| 10 | H-1009-01 | Handle, Pump | 1 |
| 11 | TF-1041-05*180 | Assembly, Hose | 1 |
| 12 | V-1100 | Label - Fluid Type | 1 |
| 13 | TF-1030-01*06.5 | Hose, Pump Suction | 1 |
| Not Shown | 06-8011-6400 | Kit, Coupling | 1 |

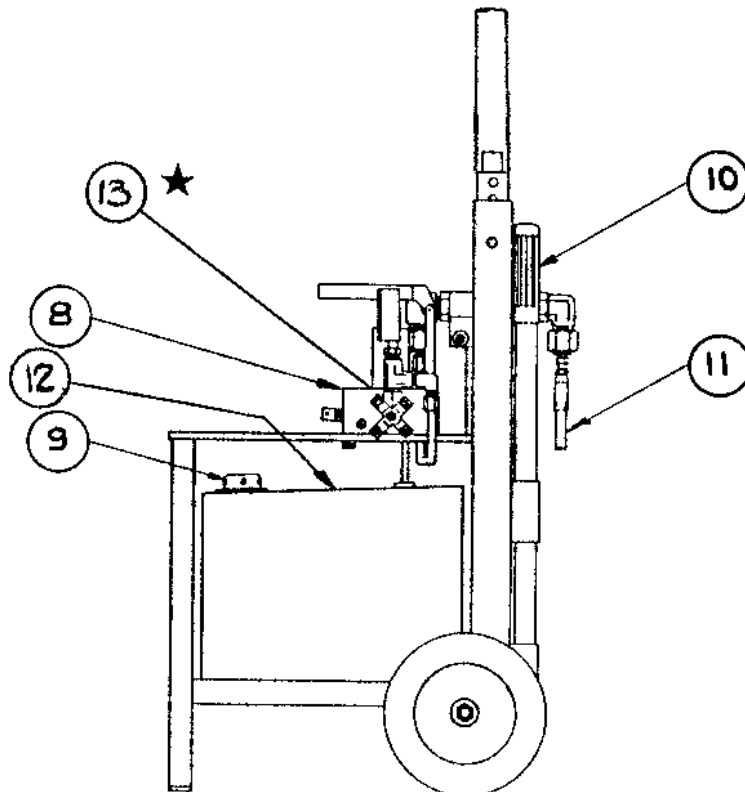
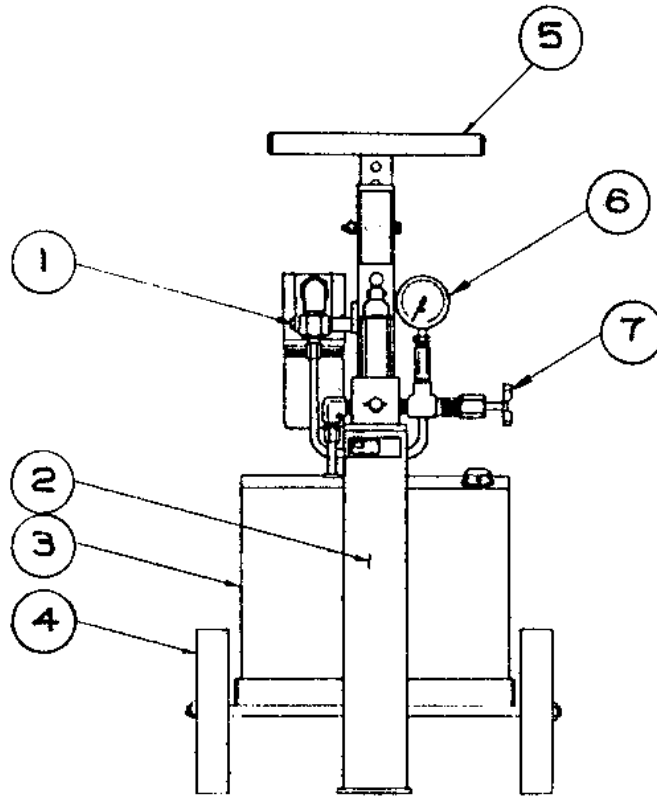
* For details, see Appendix: HC-1101 Valve Shut-Off Parts List.

REPLACEMENT KITS

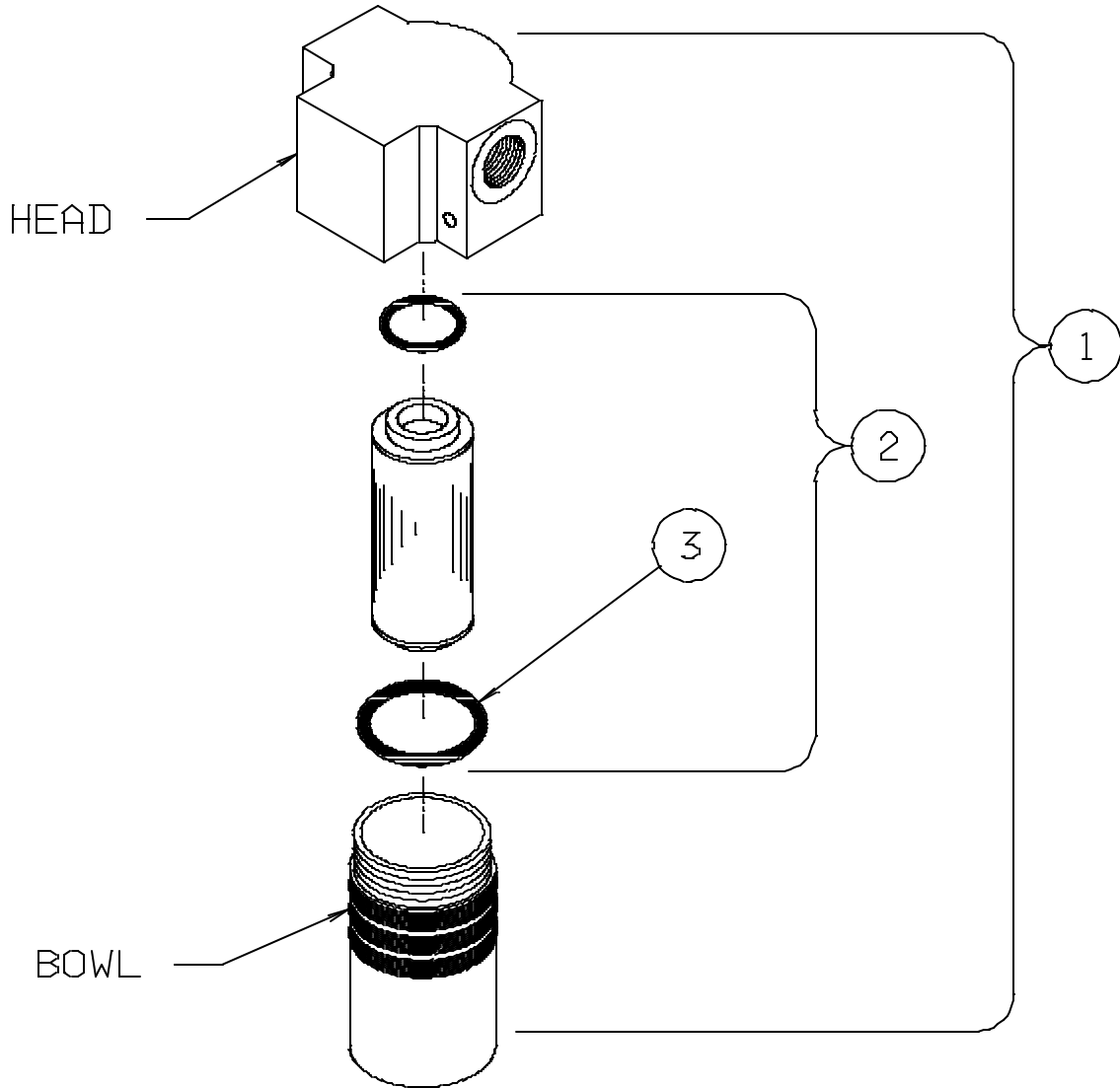
| ITEM | PART NUMBER | DESCRIPTION | QTY |
|-------------|--------------------|---|-------------|
| Not Shown | K-1985 | Kit, Replacement Release Screw: HK-1985 Screw, Replacement Screw Kit | 1 |
| 8 | K-2466-02 | Kit, Pump Replacement: HC-1035-02 Pump, 2 Stage Hydraulic (PE) INS-1334 Instruction, Pump Replacement TF-1030-01*12.0 Hose | 1 1 1 |

ORDERING: **When ordering spare parts or replacement parts, please call out Item number, Part Number, Description, Equipment Model Number (if available) and parts list date found in lower left corner of this document.**

Parts List Illustration



4" Pressure Filter Assembly



| ITEM | FLUID | PART NUMBER | DESCRIPTION | QTY |
|------|-----------------|-------------|------------------|-----|
| 1 | Mineral Base | HC-1083 | Assembly, Filter | 1 |
| | Phosphate Ester | HC-1084 | Assembly, Filter | 1 |

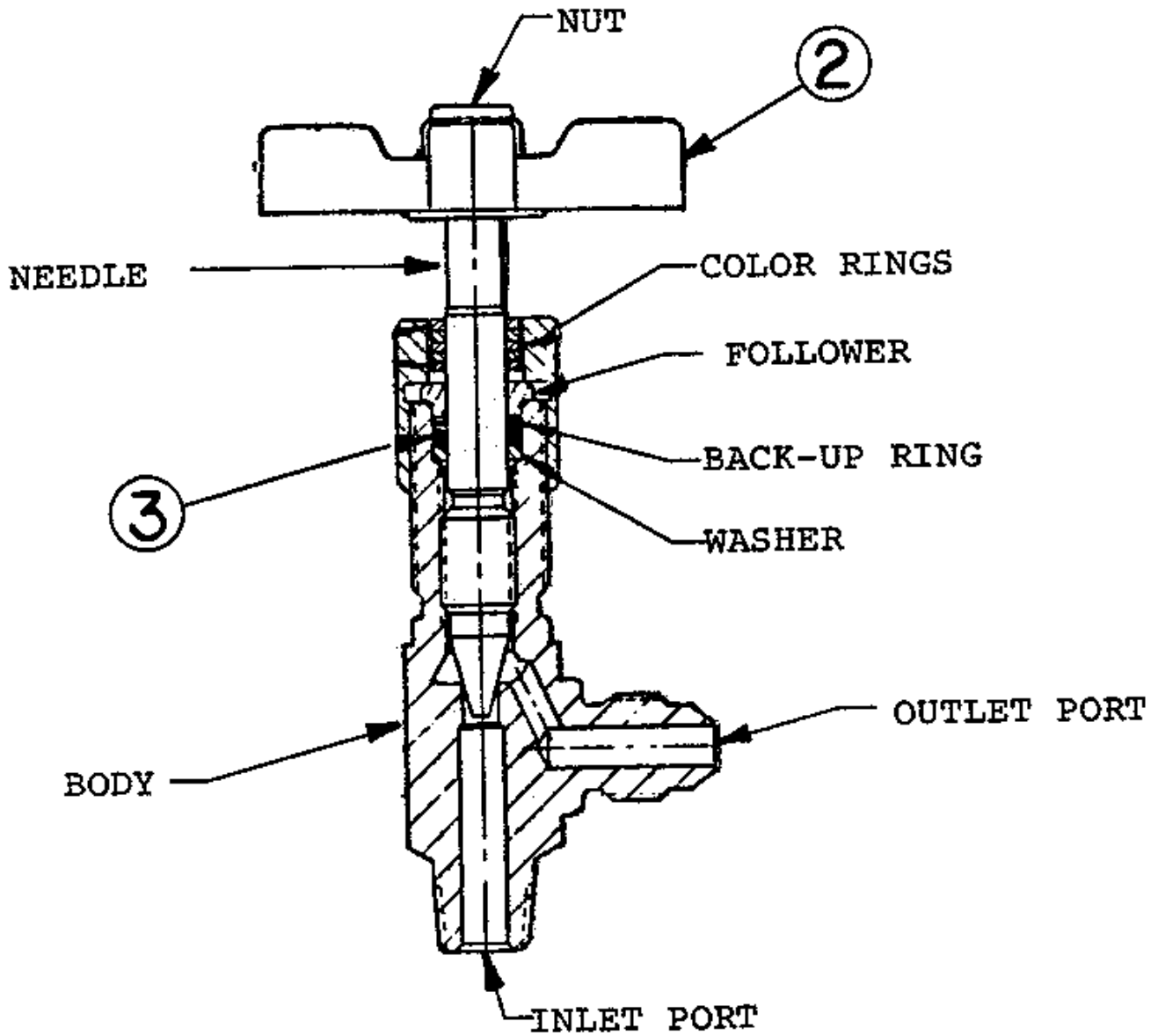
FILTER REPLACEMENT PARTS

| | | | | |
|---|-----------------|--------|---------------------|---|
| 2 | Mineral Base | K-1414 | Kit, Filter Element | 1 |
| | Phosphate Ester | K-1415 | Kit, Filter Element | 1 |

* * *Item #3 Included in Item #2* * *

| | | | | |
|---|-----------------|-------------|--------------|---|
| 3 | Mineral Base | HC-2000-138 | O-Ring, Bowl | 1 |
| | Phosphate Ester | HC-2006-138 | O-Ring, Bowl | 1 |

HC-1101 Valve Shut-Off



| ITEM | FLUID | PART NUMBER | DESCRIPTION | QTY |
|----------------------|---------------------------------|-------------|-----------------|-----|
| (Complete Component) | Mineral Base Phosphate Ester | HC-1101-01 | Assembly, Valve | 1 |
| | | HC-1101-02 | Assembly, Valve | 1 |
| 2 | N/A | HC-1082 | Handle, Valve | 1 |
| 3 | Mineral Base Phosphate Ester | HC-2000-011 | O-ring | 1 |
| | | HC-2006-011 | O-ring | 1 |