



**Model: 10-6409-0000
Lavatory Service Unit**



11/2021 – Rev. 03

REVISION

01
02
03

DATE

08/2007
06/2008
11/2021

TEXT AFFECTED

Original Release
Modified Parts List
Major revision

TABLE OF CONTENTS

	<u>PAGE</u>
1.0 PRODUCT INFORMATION	1
1.1 DESCRIPTION	1
1.2 MODEL & SERIAL NUMBER	1
1.3 MANUFACTURER.....	1
1.4 TECHNICAL SPECIFICATIONS.....	1
1.5 FILL (FRESH) SYSTEM	1
1.6 DUMP SYSTEM.....	1
1.7 MECHANICAL	1
1.8 FIELD INSTALLED KITS	1
2.0 SAFETY INFORMATION.....	2
2.1 USAGE AND SAFETY INFORMATION.....	2
3.0 PREPARATION FOR USE	2
4.0 TRAINING.....	2
4.1 TRAINING REQUIREMENTS.....	2
4.2 TRAINING PROGRAM	2
4.3 OPERATOR TRAINING.....	2
5.0 OPERATING INSTRUCTIONS	2
6.0 TROUBLE SHOOTING.....	2
6.1 FAILURE TO PUMP LIQUID	2
7.0 MAINTENANCE.....	3
8.0 PROVISION OF SPARES.....	3
8.1 SOURCE OF SPARE PARTS	3
8.2 RECOMMENDED SPARE PARTS LISTS	3
9.0 IN SERVICE SUPPORT	3
10.0 GUARANTEES/LIMITATION OF LIABILITY.....	3
11.0 APPENDICES.....	3

This product can not be modified without the written approval of Tronair, Inc. Any modifications done without written approval voids all warranties and releases Tronair, Inc., its suppliers, distributors, employees, or financial institutions from any liability from consequences that may occur. Only Tronair OEM replacement parts shall be used.

1.0 PRODUCT INFORMATION

1.1 DESCRIPTION

The Tronair Model 10-6409-0000 Lavatory Service Unit (LSU) provides a clean, sanitary means of servicing the aircraft lavatory system and transporting the waste fluid to the dump station.

Some important features are:

- Easily maneuverable with towbar
- Drain back system on dump hose to prevent fluid spillage
- Heavy duty fill pump
- Fill and dump tanks made of non-corroding HD polyethylene material with UV inhibitor
- Permanent connection of dump hose to dump tank

1.2 MODEL & SERIAL NUMBER

Reference nameplate on unit

1.3 MANUFACTURER

TRONAIR, Inc.
1 Air Cargo Pkwy East
Swanton, Ohio 43558 USA

Telephone: (419) 866-6301 or 800-426-6301
Fax: (419) 867-0634
E-mail: sales@tronair.com

1.4 TECHNICAL SPECIFICATIONS

Length..... 65 ¼ in (165.7 cm)

Width..... 39 ¼ in (99.7 cm)

Height..... 27 ¼ in (69.2 cm)

Weight..... 194 lbs (88 kg)

1.5 FILL (FRESH) SYSTEM

- 25 gallon tank capacity; HD polyethylene with UV inhibitor
- One (1) gallon per four (4) strokes fill pump
- Two (2) inch fill port
- Twelve (12) foot fill hose
- 20 psi max fill pump pressure

1.6 DUMP SYSTEM

- 30 gallon tank capacity; HD polyethylene with UV inhibitor
- Ten (10) inch tank clean out port with cover
- Four (4) inch aluminum tank flange for aircraft dump hose connection
- 10 foot dump tank hose

1.7 MECHANICAL

- Ten (10) inch pneumatic tires; 50 psi tire pressure maximum
- Roller bearings in wheels; zerk fittings
- 10 mph maximum towing speed.

1.8 FIELD INSTALLED KITS

- K-2030Kit, Dump Connector
- K-3606Kit, Hose Cap (Dump Hose)

2.0 SAFETY INFORMATION

2.1 USAGE AND SAFETY INFORMATION

To insure safe operations please read the following statements and understand their meaning. Also refer to your equipment manufacturer's manual for other important safety information. This manual contains safety precautions which are explained below. Please read carefully.



WARNING!

Warning is used to indicate the presence of a hazard that can cause **severe personal injury, death, and/or substantial property damage** if the Warning Notice is ignored.



CAUTION!

Caution is used to indicate the presence of a hazard, which will or can cause **minor personal injury or property damage** if the Caution Notice is ignored.

3.0 PREPARATION FOR USE

This lavatory service unit has been thoroughly inspected and tested prior to packaging and shipment. The unit is shipped completely assembled and is ready to use.

You are requested to generally check over the unit to assure the tightness of all nuts, bolts and screws that may have loosened during shipment. Bolts and elastic stopnuts should be tightened to a torque not to exceed industry standards for Grade '5' bolts.

Tire pressure should not exceed 50 PSI.

4.0 TRAINING

4.1 TRAINING REQUIREMENTS

The employer of the operator is responsible for providing a training program sufficient for the safe operation of the unit.

4.2 TRAINING PROGRAM

The employer provided operator training program should cover safety procedures concerning use of the unit in and around the intended aircraft at the intended aircraft servicing location.

4.3 OPERATOR TRAINING

The operator training should provide the required training for safe operation of the unit.

NOTE: Maintenance and Trouble Shooting are to be performed by a skilled and trained technician.

5.0 OPERATING INSTRUCTIONS

1. Open access panel on aircraft. Remove drain and fill coupling caps.
2. Connect the dump hose assembly to the aircraft drain coupling and fill hose assembly to mating aircraft coupling.
3. Follow aircraft manufacturer's instructions to drain sewage from aircraft into dump tank.
4. Follow aircraft manufacturer's requirements for flushing. Four (4) strokes of fill pump will deliver one (1) gallon.
5. Remove dump and fill hoses from aircraft. Flush dump hose and dump tank several times.
6. Following aircraft manufacturer's instructions, replace coupling caps on aircraft fittings. Close the access panel securely.
7. Pump sewage into approved disposal system. Refill fill tank as required. Lavatory Service Unit is now ready for reuse.

6.0 TROUBLE SHOOTING

If fill pump fails during use, refer to illustration of WC-1053 Pump Assembly on Page 6 and disassemble for inspection of pump internals. Clean inside of pump. Replace any damaged parts.

6.1 FAILURE TO PUMP LIQUID

Pump Will Not Prime Possible Clogged Suction; check that suction tubes are clear.

Not Enough Flow Check suction and discharge hoses for clogging or pinching. Verify that nozzle is not clogged.

7.0 MAINTENANCE

1. Lubricate wheel bearings with multi-purpose grease a minimum of every six (6) months.
2. Lubricate front caster swivel plate bearings with multi-purpose grease every six (6) months; minimum.
3. Periodically check for leaks at hose connections and tighten hose clamps as required.
4. Daily check fluid levels in tanks.
5. Monthly clean finish with mild soap and water.
6. Rinse dump hose and tank with fresh water after every use.
7. Regularly wash tanks and hoses with a mild detergent according to local procedures and regulations.

8.0 PROVISION OF SPARES

8.1 SOURCE OF SPARE PARTS

Spare parts may be obtained from the manufacturer:

TRONAIR, Inc.

1 Air Cargo Pkwy East
Swanton, Ohio 43558 USA

Telephone: (419) 866-6301 or 800-426-6301

Fax: (419) 867-0634

E-mail: sales@tronair.com

Website: www.tronair.com

8.2 RECOMMENDED SPARE PARTS LISTS

Reference the following page(s) for Replacement Parts and Kits available.

9.0 IN SERVICE SUPPORT

Contact Tronair, Inc. for technical services and information. See Section 1.3 – Manufacturer.

10.0 GUARANTEES/LIMITATION OF LIABILITY

Tronair products are warranted to be free of manufacturing or material defects for a period of one year after shipment to the original customer. This is solely limited to the repair or replacement of defective components. This warranty does not cover the following items:

- a) Parts required for normal maintenance
- b) Parts covered by a component manufacturers warranty
- c) Replacement parts have a 90-day warranty from date of shipment

If you have a problem that may require service, contact Tronair immediately. Do not attempt to repair or disassemble a product without first contacting Tronair, any action may affect warranty coverage. When you contact Tronair be prepared to provide the following information:

- a) Product Model Number
- b) Product Serial Number
- c) Description of the problem

If warranty coverage is approved, either replacement parts will be sent or the product will have to be returned to Tronair for repairs. If the product is to be returned, a Return Material Authorization (RMA) number will be issued for reference purposes on any shipping documents. Failure to obtain a RMA in advance of returning an item will result in a service fee. A decision on the extent of warranty coverage on returned products is reserved pending inspection at Tronair. Any shipments to Tronair must be shipped freight prepaid. Freight costs on shipments to customers will be paid by Tronair on any warranty claims only. Any unauthorized modification of the Tronair products or use of the Tronair products in violation of cautions and warnings in any manual (including updates) or safety bulletins published or delivered by Tronair will immediately void any warranty, express or implied.

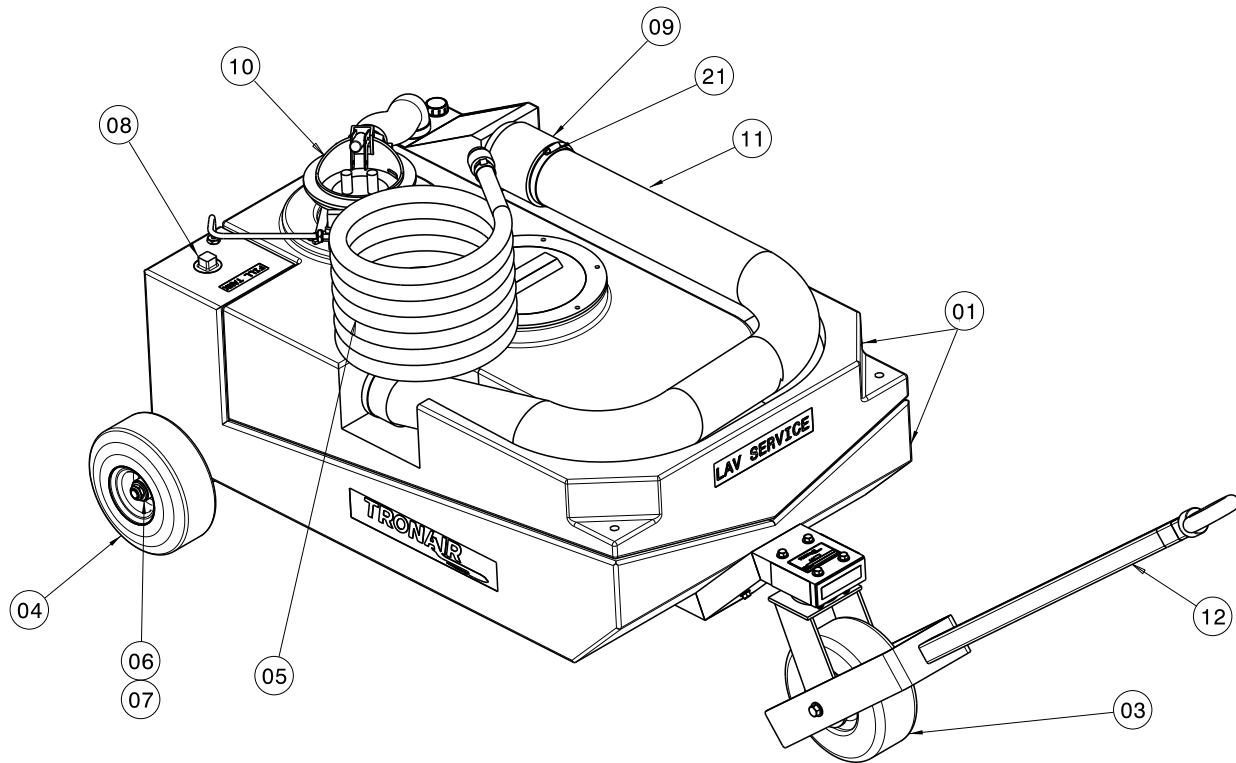
The obligations of Tronair expressly stated herein are in lieu of all other warranties or conditions expressed or implied. **Any unauthorized modification of the Tronair products or use of the Tronair products in violations of cautions and warnings in any manual (including updates) or safety bulletins published or delivered by Tronair will immediately void any warranty, express or implied and Tronair disclaims any and all liability for injury (WITHOUT LIMITATION and including DEATH), loss or damage arising from or relating to such misuse.**

11.0 APPENDICES

APPENDIX I Declaration of Conformity

Parts List

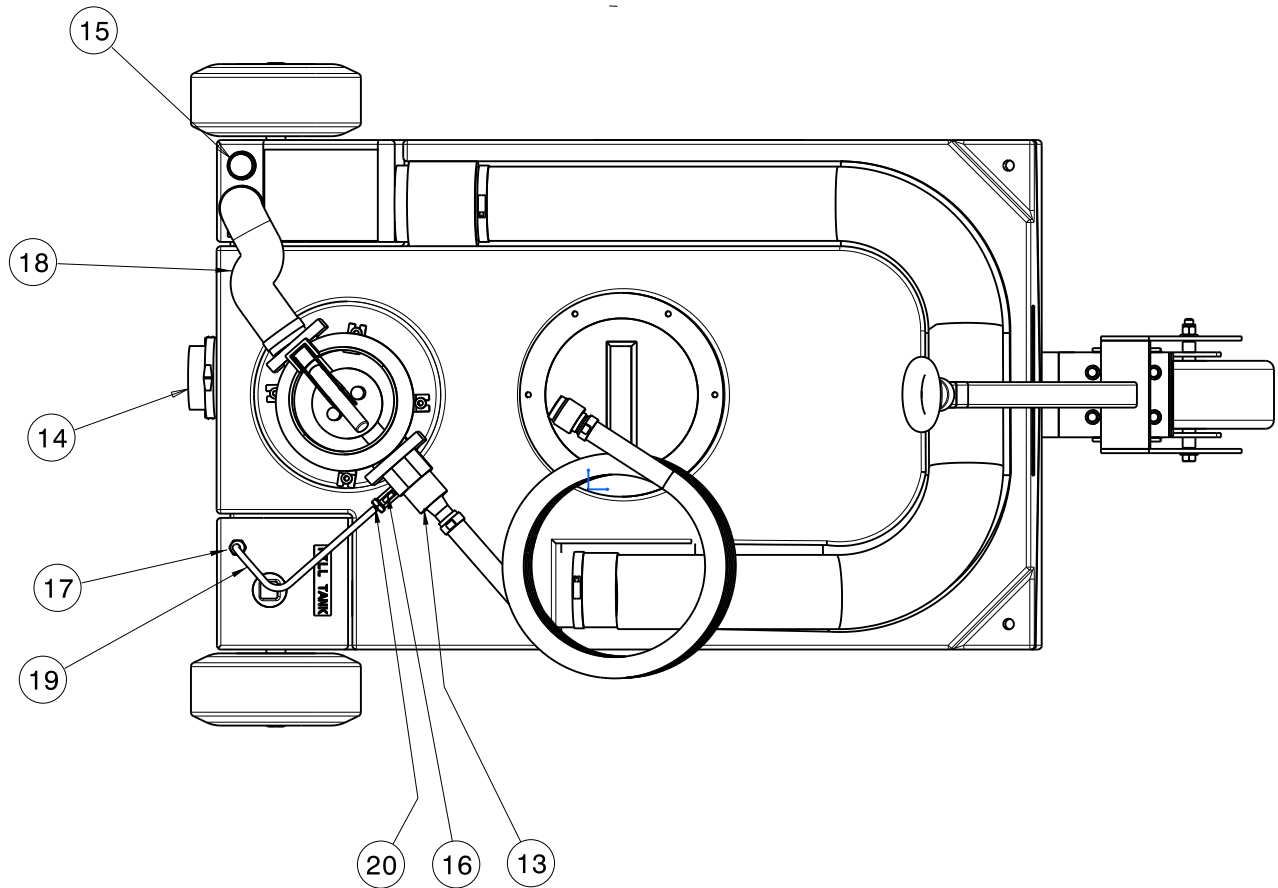
When ordering replacement parts/kits, please specify model, serial number and color of your unit.



Item	Part Number	Description	Qty
1	K-4708	Kit, Tanks	1
3	U-1125	Caster, Pneumatic Swivel	1
4	U-1126	Wheel, Pneumatic	2
6	G-1250-1110N	Flatwasher, ¾ Narrow	2
7	G-1203-1115	EJN, ¾ - 16	2
8	N-1507	Plug, 2" PVC	1
9	H-1956	Coupler, Dump	1
11	TF-1157*072.00	Hose, Waste	1
21	H-1426-17	Clamp, Hose	2
5	K-4167	Kit, Fill Hose; consists of:	
	TF-1081-07*144		1
	H-1954		1
	N-2440-04-A		1
	H-1426-05		2
12	K-4165	Kit, Towbar Weldment; consists of:	
	G-1100-109580	Bolt, ½ - 20 HH Gr 5	1
	G-1202-1095	Stopnut, ½ - 20 Elastic	1
	G-1250-1090N	Flatwasher, ½ Narrow	1
	TR-2008	Spacer, Wheel	2
	Z-6637-01	Weldment, Towbar	1
10	K-4843	Kit, Pump Modified; consists of:	
	Z-6722	Pump, Modified	1
Not Shown	K-4166	Kit, Waste Outlet hose; consists of:	
	H-1332		1
	H-1426-12		1
	TF-1158*120.00		1

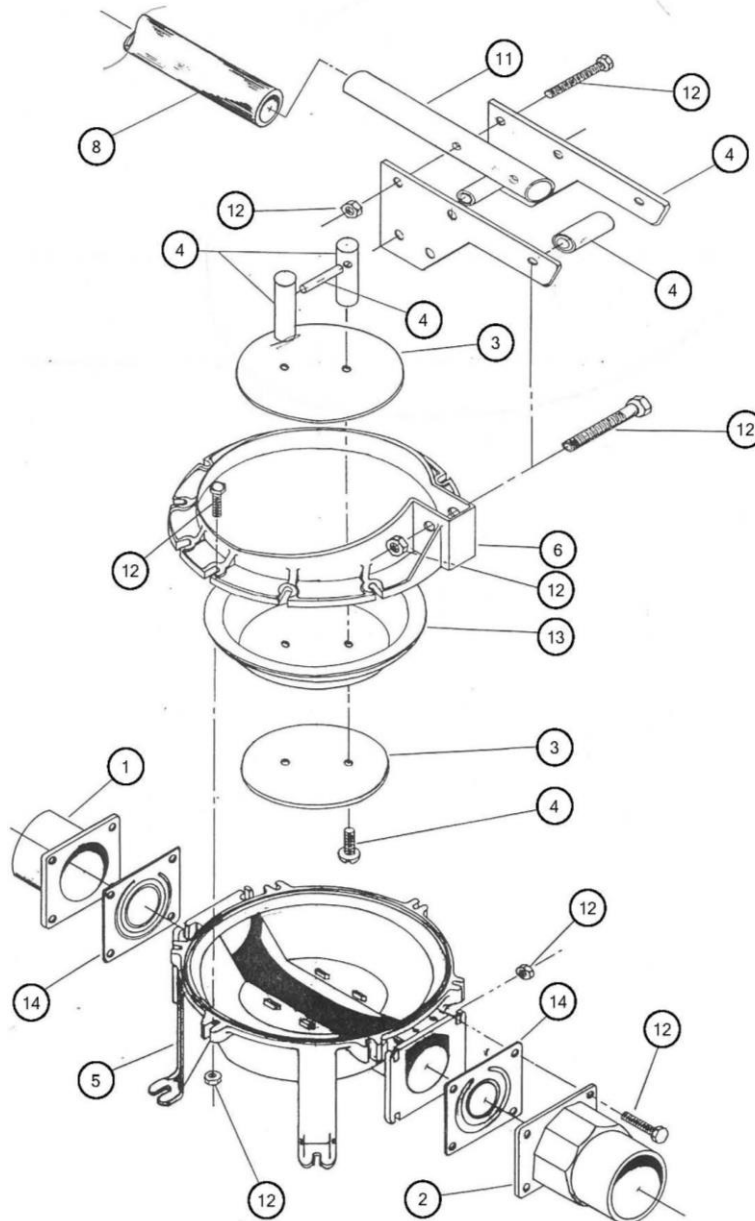
Parts List

When ordering replacement parts/kits, please specify model, serial number and color of your unit.



Item	Part Number	Description	Qty
13	H-3028	Reducer, Pipe To Hose	1
14	H-1333	Valve, Drain	1
15	H-1045	Breather	1
16	H-3026	Valve, Bleed Line	1
17	N-2409-01	Elbow, 45° Male 1/8 NPT x 1/4 Hose	1
18	TF-1159*013.00	Hose, 2" ID	1
19	TF-1009-02*010.00	Hose, Bleed Line	1
20	N-2412-05	Fitting, Hose 1/4 NPT x 1/4 Hose	1

Pump Assembly Component Parts List



Item	Part Number	Description	Qty
	K-4843	Kit, Pump Modified; consists of:	
1	WC-1053-01	Inlet Flange	1
2	Contact Tronair for replacement	Outlet Flange, Modified	1
3	WC-1053-03	Button	2
4	WC-1053-04	Clevis Assembly; consists of:	
	WC-1053-05	Clevis Pin	1
	WC-1053-06	Clevis Supports	2
	WC-1053-07	Side Plates	2
	WC-1053-08	Bushings A & B	2
	WC-1053-09	O-Rings #111	2
	WC-1053-10	SS Washers	2
	WC-1053-11	TH 1/4 - 20 x 5/8	2

Pump Assembly Component Parts List

Item	Part Number	Description	Qty
5	WC-1053-12	Body	1
6	WC-1053-13	Clamp Ring	1
8	WC-1053-14	Handle With Grip	1
11	WC-1053-15	Actuator Extension	1
12	WC-1053-16	Hardware Set; <i>Consists of:</i>	
	WC-1053-17	HH ¼ - 20 x 7/8 (Inlet/Outlet)	8
	WC-1053-18	HH ¼ - 20 x 1 (Clamp Ring)	6
	WC-1053-19	HN ¼ - 20	14
	WC-1053-20	HH 5/16 – 18 x 1 ¼ (Actuator)	2
	WC-1053-21	HN 5/16 – 18 (Actuator)	2
	WC-1053-22	HH 3/8 – 16 x 2 (Actuator)	1
	WC-1053-23	HN 3/8 – 16 (Actuator)	1
13	WC-1053-24	Diaphragm	1
14	WC-1053-25	Flapper Valves	2



APPENDIX I

Declaration of Conformity



DECLARATION of CONFORMITY

The design, development and manufacture is in accordance with European Community guidelines

Lavatory Service Unit
10-6409-0000

Relevant provisions complied with by the machinery:
2006/42/EC

Relevant standards complied with by the machinery:
EN ISO 12100-1

Identification of person empowered to sign on behalf of the Manufacturer:

A handwritten signature in cursive script that reads "Patrick Finch". The signature is written in black ink and is positioned above a horizontal line.

Quality Assurance Representative