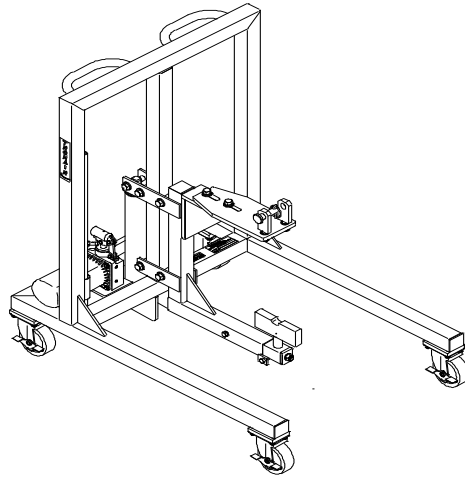




Operation & Service Manual



Model: 14-6890-0100 Main Landing Gear Installation Dolly

08/2012 - Rev. 01

Includes Illustrated Parts Lists

**For Spare Parts, Operations & Service Manuals or Service Needs
Scan the QR code or visit Tronair.com/aftermarket**



The Tronair Group of Companies: Tronair | EBIS | Columbus Jack | Eagle | DAE | Malabar International

Tronair, Inc.
1 Air Cargo Pkwy East
Swanton, OH 43558

Phone: (419) 866-6301 | 800-426-6301
Web: www.tronair.com
Email: sales@tronair.com

TABLE OF CONTENTS

PAGE

1.0	Description	1
2.0	Usage.....	1
3.0	Specifications	1
4.0	Operation	1
5.0	Maintenance.....	1

Model: 14-6890-0100
Main Landing Gear Installation Dolly

REVISION
OR
01

DATE
11/1999
08/2012

TEXT AFFECTED
Original Release
Modified Parts List

Model: 14-6890-0100
Main Landing Gear Installation Dolly

This product can not be modified without the written approval of Tronair, Inc. Any modifications done without written approval voids all warranties and releases Tronair, Inc., its suppliers, distributors, employees, or financial institutions from any liability from consequences that may occur. Only Tronair OEM replacement parts shall be used.

1.0 DESCRIPTION

The Tronair Main Landing Gear Installation Dolly incorporates the following quality features:

- Heavy-duty steel construction
- Easy maneuverability
- Can be fixed into static position with locking casters
- Adjustable arm for left and right main landing gear
- Hydraulic lifting

2.0 USAGE

The purpose of this landing gear dolly is to allow for positioning of aircraft landing gear for installation.

3.0 SPECIFICATIONS

Weight: 250 lbs.
Length: 39 inches
Width: 28 inches
Height: 40 ¾ inches
Hydraulic Lift: 17 7/8 inches

4.0 OPERATION

1. Adjust the main arm adapter and jack pad to fit the landing gear. The main arm adapter can be adjusted up and down or in and out by loosening four (4) bolts. Once the main arm adapter is in the desired position, tighten the four (4) bolts to a torque value of 85 ft-lbs. The jack pad can be adjusted in and out by turning the adjusting screw on the lower arm. (See Figure 1)
2. Locate dolly in approximate location for installation and lock casters.
3. Using the hand pump, raise gear into mounting location.
4. Remove landing gear attachment points and lower arm from gear after the landing gear is installed.

5.0 MAINTENANCE

1. Lubricate swivel caster bearing race with multi-purpose grease.
2. Lubricate all pivot points.
3. Maintain hand pump reservoir level with MIL-L-5606 fluid.
4. Periodically check all pivot pins for wear.

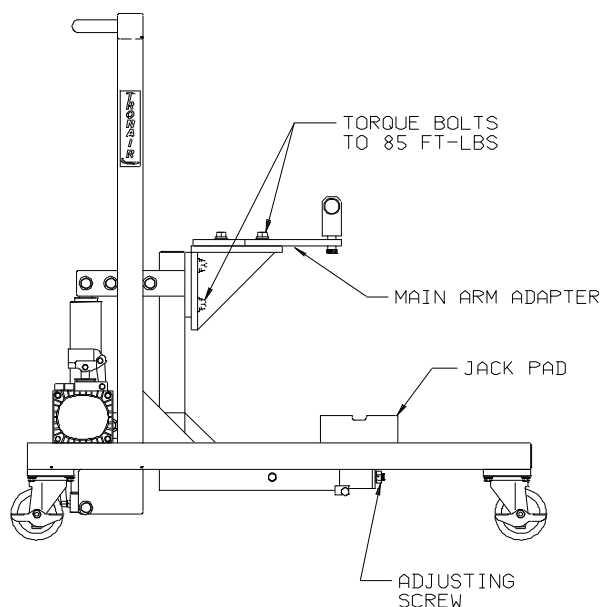


Figure 1

Parts List

When ordering replacement parts/kits, please specify model, serial number and color of your unit.

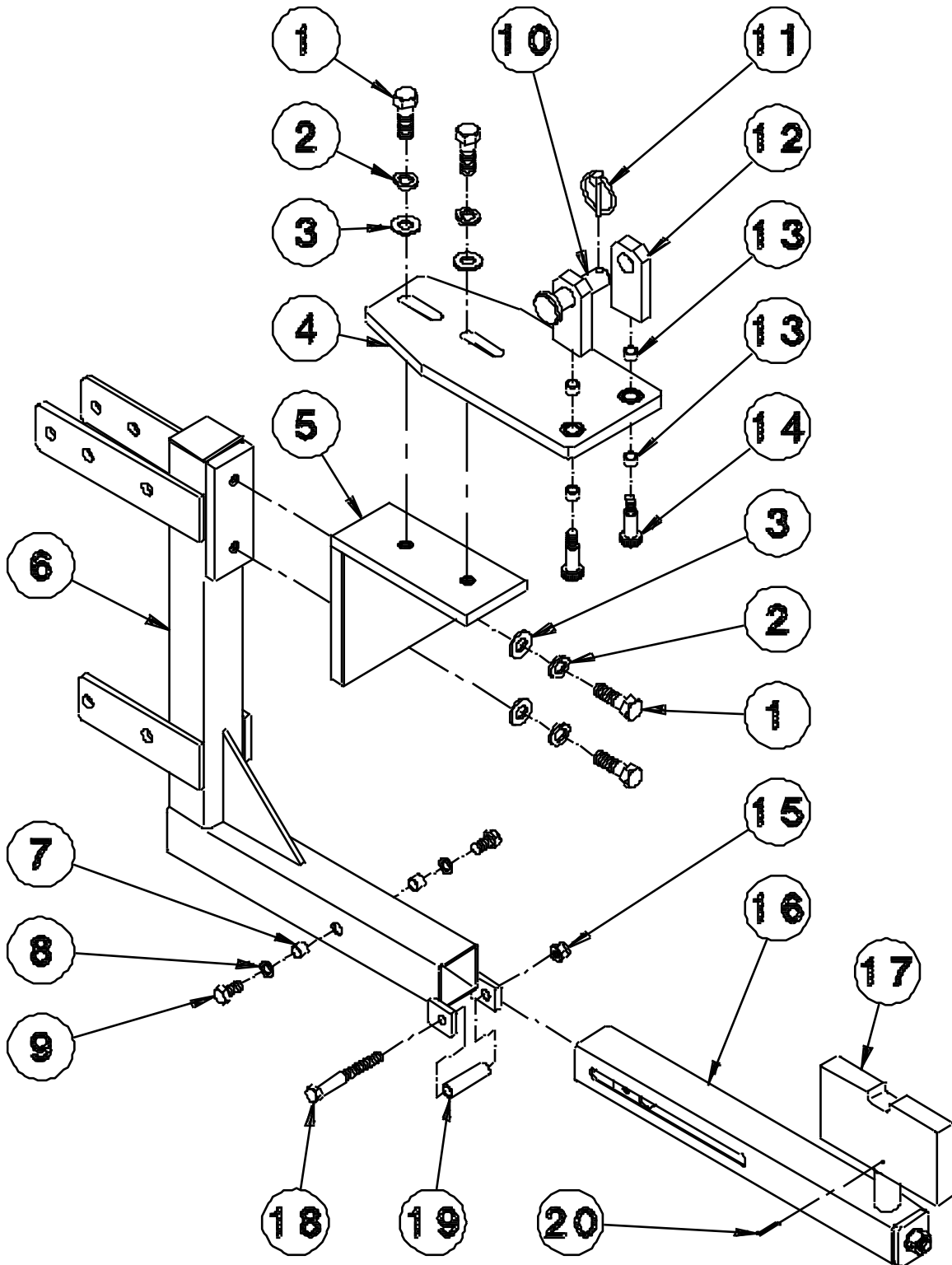
ITEM	PART NUMBER	DESCRIPTION	QTY
6	Z-4423-01	Weldment, Main Arm	1
10	R-1950	Pin, Clevis	1
11	G-1320-01	Pin, Lynch	1
21	Z-4421-01	Weldment, Frame	Not Sold Separately
38	TF-1043-01*24.0	Assembly, Hose (#4 SAE)	1
42	R-1887	Ring, Inner	1
43	Z-4428	Assembly, Piston	1
48	R-1888	Ring, Outer	1
49	TR-1640-02	Cylinder, Stage 1	1
53	Z-4427	Weldment, Cylinder	1
Not Shown	H-1010-01	Handle, Pump	1
	K-3061	Kit, Cylinder Seal Replacement; consist of:	
40	G-1399-137	Ring, Internal	2
41	HC-1619-1000	Wiper, Ring	1
44	HC-2023-316	Backup, Parbak	1
45	HC-2000-316	O-ring	1
51	HC-2000-326	O-ring	1
50	HC-2020-326	Backup, Parbak	1
46	G-1399-212	Ring, Internal	2
47	HC-1619-1750	Wiper, Ring	1
52	G-1391-12	Ring, Internal	1
	K-3131	Kit, Arm Extension Plate; consist of:	
1	G-1420-109514	Bolt, Hex Head, Grade 8, 1/2-20 x 1 1/2" long	2
2	G-1251-1090R	Lockwasher, 1/2 Regular	2
3	G-1250-1090N	Flatwasher, 1/2 Narrow	2
4	Z-4430	Assembly, Arm Extension Plate	1
		includes:	
	H-2237-01	Bearing, Spherical	2
	K-3132	Kit, Bracket Replacement; consist of:	
1	G-1420-109514	Bolt, Hex Head, Grade 8, 1/2-20 x 1 1/2" long	2
2	G-1251-1090R	Lockwasher, 1/2 Regular	2
3	G-1250-1090N	Flatwasher, 1/2 Narrow	2
5	Z-4422-01	Weldment, Bracket	1
	K-3133	Kit, Support Arm Replacement; consist of:	
7	TR377-03*000.38	Spacer	2
8	G-1255-07	Washer, 3/8 AN	2
9	G-1100-107506	Bolt, Hex Head, Grade 5, 3/8-24 x 3/4" long	2
16	Z-4426	Assembly, Support Arm	1
	K-3134	Kit, Pivot Adapter Replacement; consists of:	
12	J-2996	Adapter, Pivot	1
13	TR378-03*000.31	Spacer	2
14	G-1155-107210	Screw, Socket Head Shoulder 3/8-16, 1/2" diameter x 1" long	1
	K-3135	Kit, Roller (Support Arm) Replacement; consists of:	
15	G-1202-1075	Stopnut, 3/8-24 Elastic	1
18	G-1100-107532	Bolt, Hex Head, Grade 5, 3/8-24 x 3 1/4" long	1
19	TR377-03*001.94	Roller	1
	K-3136	Kit, Jack Pad Replacement; consists of:	
17	J-3004	Plate, Jack Pad	1
20	G-1300-13060	Pin, Roll (1/8" diameter x 3/4" long)	1

Parts List

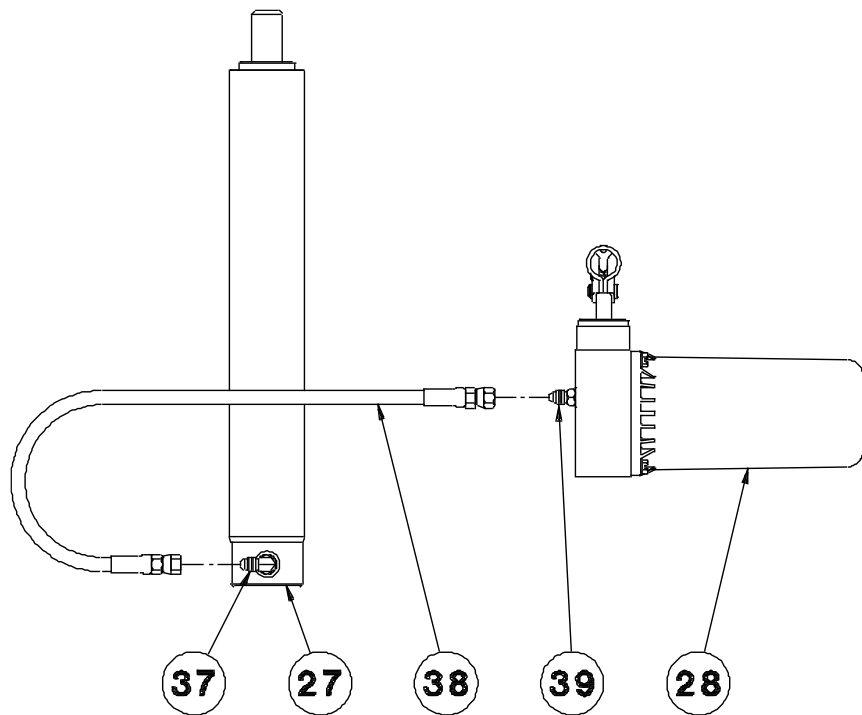
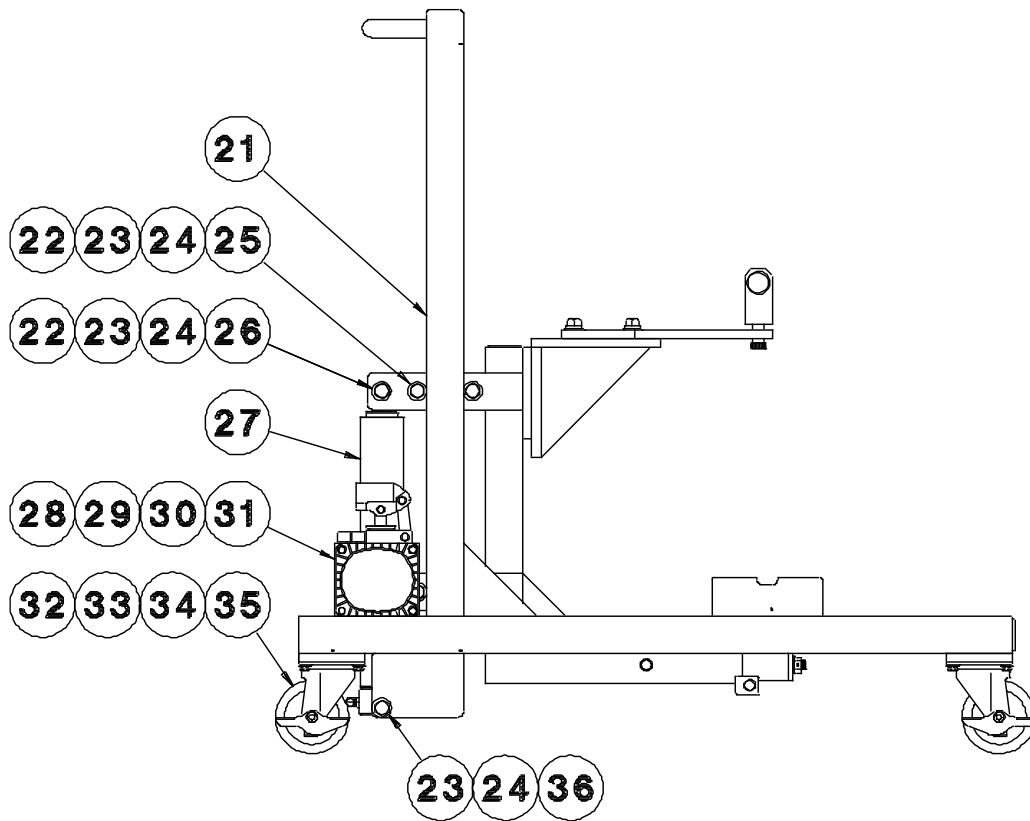
When ordering replacement parts/kits, please specify model, serial number and color of your unit.

ITEM	PART NUMBER	DESCRIPTION	QTY
	K-3137	Kit, Roller (Main Arm) Replacement; consists of:	
22.....	G-1100-109534	Bolt, Hex Head, Grade 5, 1/2-20 x 3 1/2" long	4
23.....	G-1250-1090N.....	Flatwasher, 1/2 Narrow	8
24.....	G-1202-1095	Stopnut, 1/2-20 Elastic	4
25.....	R-1949.....	Roller.....	4
	K-3138	Kit, Cylinder Replacement; consists of:	
22.....	G-1100-109534	Bolt, Hex Head, Grade 5, 1/2-20 x 3 1/2" long	1
23.....	G-1250-1090N.....	Flatwasher, 1/2 Narrow	4
24.....	G-1202-1095	Stopnut, 1/2-20 Elastic	2
26.....	TR378-03*000.50	Spacer.....	2
27.....	Z-4429.....	Assembly, Cylinder.....	1
36.....	G-1100-109544	Bolt, Hex Head, Grade 5, 1/2-20 x 4 1/2" long	1
37.....	N-2001-03-S-B	Elbow (Str Thd), #4 SAE x 1/4-37o JIC	1
	K-4693	Kit, Hand Pump Replacement; consists of:	
28.....	HC-2587	Pump, Hand (includes label)	1
29.....	G-1100-107010	Bolt, Hex Head, Grade 5, 3/8-16 x 1" long	2
30.....	G-1251-1070R.....	Lockwasher, 3/8 Regular.....	2
31.....	G-1250-1070N.....	Flatwasher, 3/8 Narrow	2
39.....	N-2007-03-S-B	Connector, (Str Thd) #4 SAE x 1/4-37o JIC	1
	K-3140	Kit, Caster Replacement; consists of:	
32.....	U-1082.....	Caster, Swivel	1
33.....	G-1100-105506	Bolt, Hex Head, Grade 5, 1/4-28 x 3/4" long	4
34.....	G-1251-1050R.....	Lockwasher, 1/4 Regular.....	4
35.....	G-1250-1050N.....	Flatwasher, 1/4 Narrow	4

Parts Lists Illustrations



Parts Lists Illustrations



Parts Lists Illustrations

