



Model: 14-6896-6000
Lear
Main Landing Gear
Separation Tool

Parts List
With Illustrations

03/2005 – Rev. 03

For Spare Parts, Operations & Service Manuals or Service Needs
Scan the QR code or visit Tronair.com/aftermarket



The Tronair Group of Companies: Tronair | EBIS | Columbus Jack | Eagle | DAE | Malabar International

Tronair, Inc.
1 Air Cargo Pkwy East
Swanton, OH 43558

Phone: (419) 866-6301 | 800-426-6301
Web: www.tronair.com
Email: sales@tronair.com

Model: 14-6896-6000
Lear Main Landing Gear Separation Tool

This product can not be modified without the written approval of Tronair, Inc. Any modifications done without written approval voids all warranties and releases Tronair, Inc., its suppliers, distributors, employees, or financial institutions from any liability from consequences that may occur. Only Tronair OEM replacement parts shall be used.

1.0 USAGE

- This tool is to be used in compliance with the aircraft manufacturer's manual.
- The 14-6896-6000 tool is for piston/hub separation on main landing gear of LearJet Model 60, (with kits available for LearJet Models: 24E/F, 25D/F, 28, 29, 31A, 35A, 36A, 54, 55, and 56).
- The 14-6896-6000 tool is to be used in conjunction with an upright shop press (customer supplied).



WARNING!

Do not exceed maximum tonnage identified in aircraft maintenance manual.

2.0 PROCEDURE

1. Insert landing gear strut shaft through hole in stop plate and slide shaft/stop plate through hole in holding fixture from inside outward.
2. Clamp correct insert on end of strut shaft. Ensure insert engages shaft properly and holes for pin are aligned. Tighten four (4) bolts in crisscross pattern until snug. Torque bolts to 60-70 ft-lbs in three increments in crisscross pattern. Place in press, insert side down with stop plate resting on press table and press cylinder contacting rib on top of holding fixture. See *Figure 1*.
3. See Aircraft Maintenance Manual for further instructions.

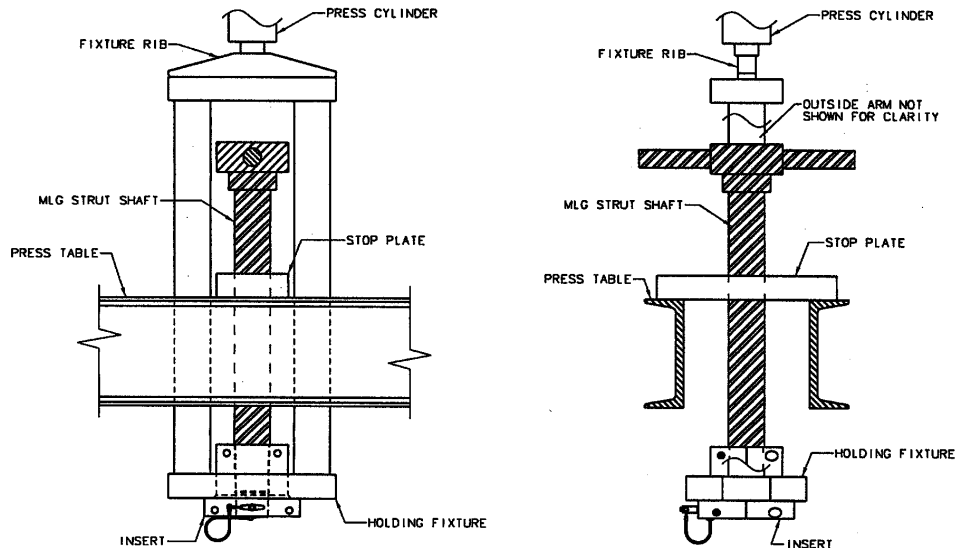
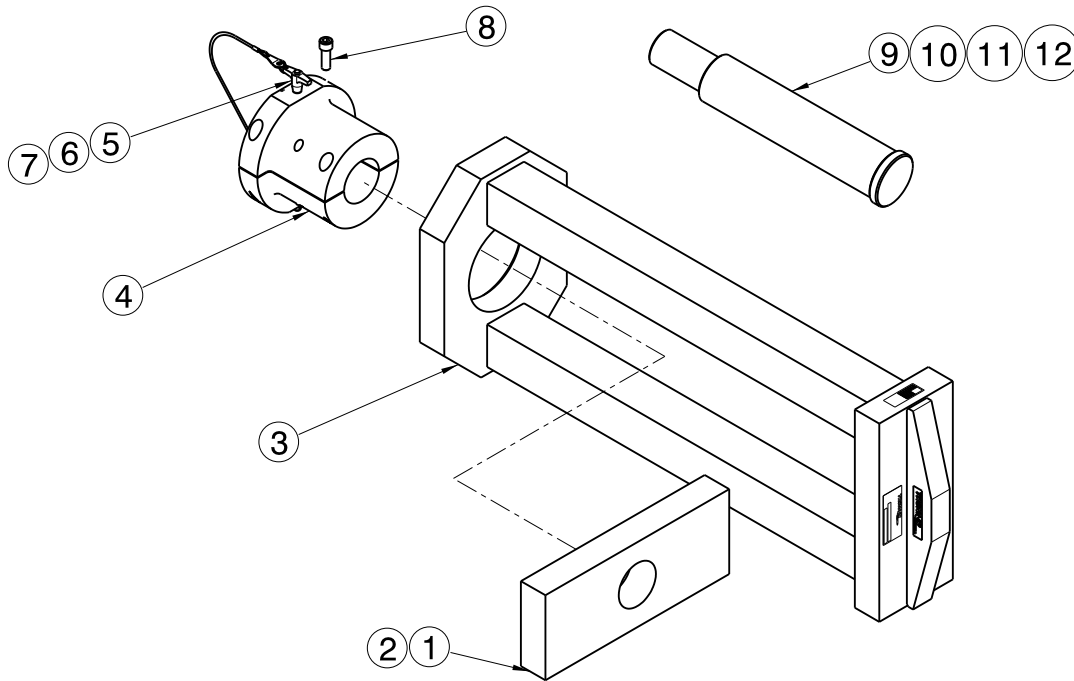


FIGURE 1

Model: 14-6896-6000
Lear Main Landing Gear Separation Tool

Parts List



ITEM	PART NUMBER	DESCRIPTION	QTY
1.....	J-3248-01	Plate, Stop	1
2.....	J-3248-02	Plate, Stop	1
3.....	Z-5106	Weldment, Holding Fixture	1
♦ 4.....	Z-5107	Assembly, LearJet Model 60 Insert	1
5.....	G-1310-0780	Pin, 716" diameter x 2" long, Ball Lok-T	1
6.....	H-1026*18.0	Assembly, Lanyard	1
7.....	G-1350-12	Rivet, 316 Closed-End Aluminum	1
8.....	G-1151-109520	Screw, 1/2 x 2" long, Hex Socket Head Cap	4
9.....	R-2189-1	Pin	1
10.....	R-2189-2	Pin	1
11.....	R-2189-3	Pin	1
12.....	R-2189-4	Pin	1

NOTE: LearJet Models 24E/F, 25D/F, 28, 29, 31A, 35A, 36A, 54, 55, and 56 are equipped with one of the two different piston assemblies. The part number for the piston assembly is rubber-stamped on the piston O.D. toward the end opposite the hub.



WARNING!

Failure to use correct insert will result in strut damage.

- ♦ K-3485 Kit, LearJet Insert (fits models listed above **with the exception of 60**, that use #5441003 Piston Assembly) consists of Z-5162 LearJet Insert Assembly
- ♦ K-3555 Kit, LearJet Insert (fits models listed above **with the exception of 60**, that use #2441107 Piston Assembly) consists of Z-5333 LearJet Insert Assembly.

TRONAIR

03/2005– Rev. 03