

**Model: 14-6919-0110  
Strut Service Device**



06/2015 – Rev. 02

REVISION  
01  
02

DATE  
03/2015  
06/2015

TEXT AFFECTED  
Original Release  
Modified Parts List

**TABLE OF CONTENTS**

	<b><u>PAGE</u></b>
<b>1.0</b>	<b>PRODUCT INFORMATION ..... 1</b>
1.1	DESCRIPTION ..... 1
1.2	MODEL & SERIAL NUMBER ..... 1
1.3	MANUFACTURER ..... 1
1.4	SPECIFICATIONS ..... 1
<b>2.0</b>	<b>SAFETY INFORMATION ..... 1</b>
2.1	USAGE AND SAFETY INFORMATION ..... 1
<b>3.0</b>	<b>TRAINING ..... 1</b>
3.1	TRAINING REQUIREMENTS ..... 1
<b>4.0</b>	<b>OPERATING INSTRUCTIONS ..... 2</b>
4.1	OPERATING CONTROLS ..... 2
4.2	TO RAISE BOOM ..... 3
4.3	TO LOWER BOOM ..... 3
<b>5.0</b>	<b>ADAPTER LISTING ..... 3</b>
<b>6.0</b>	<b>INSPECTION/MAINTENANCE ..... 3</b>
<b>7.0</b>	<b>PROVISION OF SPARES ..... 3</b>
7.1	SPARE PARTS ..... 3
7.2	PARTS LISTS & ILLUSTRATIONS ..... 3
<b>8.0</b>	<b>IN SERVICE SUPPORT ..... 4</b>
<b>9.0</b>	<b>GUARANTEES/LIMITATION OF LIABILITY ..... 4</b>
<b>10.0</b>	<b>APPENDICES ..... 4</b>

This product can not be modified without the written approval of Tronair, Inc. Any modifications done without written approval voids all warranties and releases Tronair, Inc., its suppliers, distributors, employees, or financial institutions from any liability from consequences that may occur. Only Tronair OEM replacement parts shall be used.

## 1.0 PRODUCT INFORMATION

### 1.1 DESCRIPTION

This Tronair Strut Service Device, Model 14-6919-0100, is designed to compress landing gear struts.

### 1.2 MODEL & SERIAL NUMBER

Reference nameplate on unit

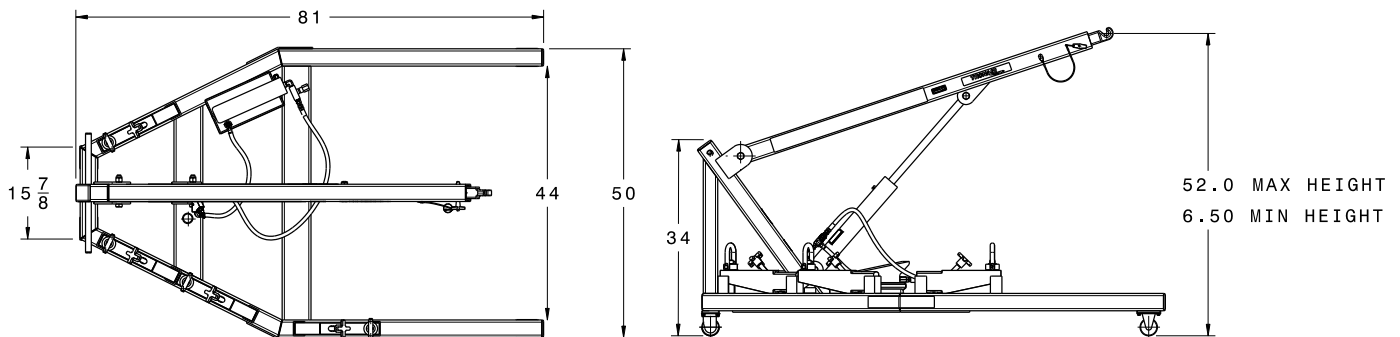
### 1.3 MANUFACTURER

**TRONAIR, Inc.**  
1 Air Cargo Pkwy East  
Swanton, Ohio 43558 USA

Telephone: (419) 866-6301 or 800-426-6301  
Fax: (419) 867-0634  
E-mail: sales@tronair.com  
Website: www.tronair.com

### 1.4 SPECIFICATIONS

- Maximum Lifting Capacity ..... 1,500 lbs (680.4 kg)
- Boom Height, Collapsed ..... 6.5 in (15.9 cm)
- Boom Height, Extended ..... 52 in (132.1 cm)
- Air Pressure Max..... 125 psi (8.6 bar)
- Pump Pressure Relief ..... 950 psi (65.5 bar)



## 2.0 SAFETY INFORMATION

### 2.1 USAGE AND SAFETY INFORMATION

To insure safe operations please read the following statements and understand their meaning. Also refer to your equipment manufacturer's manual for other important safety information. This manual contains safety precautions which are explained below. Please read carefully.



**WARNING!** — Warning is used to indicate the presence of a hazard that **can cause severe personal injury, death, or substantial property damage** if the warning notice is ignored.

**CAUTION!** — Caution is used to indicate the presence of a hazard that **will or can cause minor personal injury or property damage** if the caution notice is ignored.

## 3.0 TRAINING

### 3.1 TRAINING REQUIREMENTS

The employer of the operator is responsible for providing a training program sufficient for the safe operation of the Strut Service Tool.

**NOTE: Maintenance and Trouble Shooting are to be performed by a skilled and trained technician.**

## 4.0 OPERATING INSTRUCTIONS



### CAUTION!

Operator injury and/or component damage can result.

- Do not transport components on this lift.
- This lift is designed to only compress landing gear struts on aircraft.

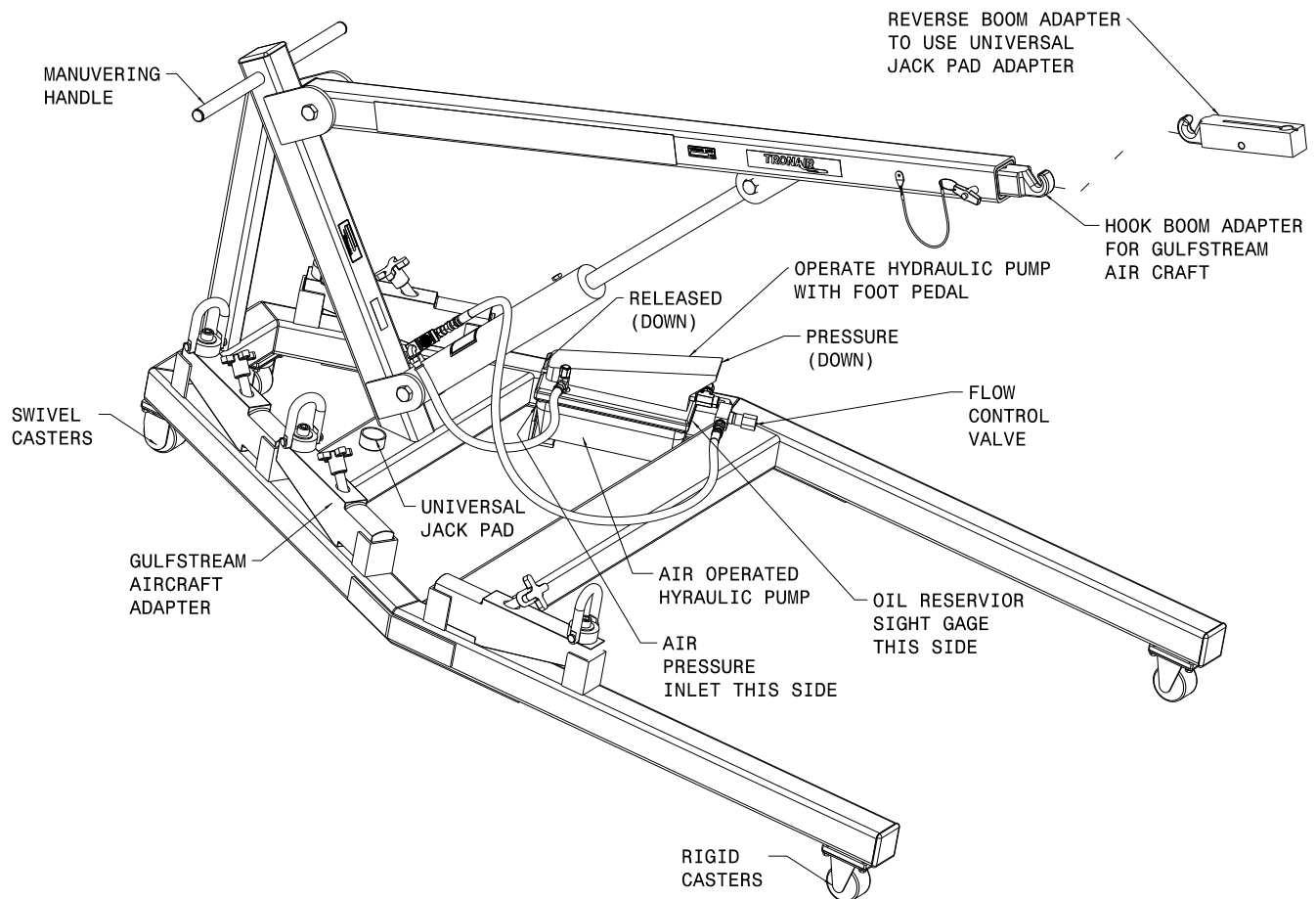


Universal Jack Pad



Gulfstream MLG Adapter

## 4.1 OPERATING CONTROLS



## 4.0 OPERATING INSTRUCTIONS *(continued)*

### 4.2 TO RAISE BOOM

1. Place Strut Service Device on hard level surface.
2. Use appropriate adaptors.
3. Actuate foot pedal to "Pressure" side until desired boom height is reached.
4. Use flow control valve to adjust speed of boom.

### 4.3 TO LOWER BOOM

1. Actuate foot pedal to "release" side.
2. Use flow control valve to adjust speed of boom.



#### CAUTION!

**Component damage and/or operator injury could result if release valve is opened too quickly.**

## 5.0 ADAPTER LISTING

### Included with unit

HJ-532-01 ... Universal jack adapter pad (.75 radius)

### Sold Separately

K-4126..... Includes kits K-4127, K-4128, K-4129, K-4130

K-4127..... Axle adapter assembly, 3.340 diameter, for Gulfstream GII, GIII, GIV, GIVSP, G400

K-4128..... Axle adapter assembly, 3.536 diameter, for Gulfstream GII, GIII, GIV, GIVSP, G400

K-4129..... Axle adapter assembly, 3.610 diameter, for Gulfstream GV, GVSP, G350, G450, G500, G550, G650

K-4130..... Axle adapter assembly, 3.840 diameter, for Gulfstream GV, GVSP, G350, G450, G500, G550, G650

**NOTE: Aircraft adapters will vary depending on Gulfstream aircraft model and aircraft service change 155**

## 6.0 INSPECTION/MAINTENANCE

To keep your Tronair equipment fully operational and last for years you should adhere to the following suggestions:

1. Before each use:  
Visually inspect unit to ensure all components are present and functional
  - a. All pivot bolts & nuts are secure
  - b. Cylinder is free of leaks & relief valve is operational
  - c. All casters & locks are operational
  - d. No bent or broken components

#### WARNING!



**Ensure lift components are free of damage and or excessive wear. Never use lift if any component is bent or broken**

2. Periodically:  
Check cylinder reservoir level. Replenish with MIL-5606
  - a. Check oil level with cylinder fully retracted
  - b. Ensure Fluid is at acceptable level
3. Annually:  
Check pump pressure relief

#### WARNING!



**Pressure relief is factory set. DO NOT attempt to reset or adjust the relief valve. Send pump to an authorized Enerpac dealer.**

#### WARNING!



**Failure to remove landing gear strut servicing tool prior to inflating shock strut may cause fatal or serious injuries to personnel and damage to aircraft.**

## 7.0 PROVISION OF SPARES

### 7.1 SPARE PARTS

Spare parts may be obtained from the manufacturer:

**TRONAIR, Inc.**  
1 Air Cargo Pkwy East  
Swanton, Ohio 43558 USA

Telephone: (419) 866-6301 or 800-426-6301  
Fax: (419) 867-0634  
E-mail: sales@tronair.com  
Website: www.tronair.com

### 7.2 PARTS LISTS & ILLUSTRATIONS

Reference the following page for Replacement Parts available.

## 8.0 IN SERVICE SUPPORT

Contact Tronair, Inc. for technical services and information. See Section 1.3 – Manufacturer.

## 9.0 GUARANTEES/LIMITATION OF LIABILITY

Tronair products are warranted to be free of manufacturing or material defects for a period of one year after shipment to the original customer. This is solely limited to the repair or replacement of defective components. This warranty does not cover the following items:

- a) Parts required for normal maintenance
- b) Parts covered by a component manufacturers warranty
- c) Replacement parts have a 90-day warranty from date of shipment

If you have a problem that may require service, contact Tronair immediately. Do not attempt to repair or disassemble a product without first contacting Tronair, any action may affect warranty coverage. When you contact Tronair be prepared to provide the following information:

- a) Product Model Number
- b) Product Serial Number
- c) Description of the problem

If warranty coverage is approved, either replacement parts will be sent or the product will have to be returned to Tronair for repairs. If the product is to be returned, a Return Material Authorization (RMA) number will be issued for reference purposes on any shipping documents. Failure to obtain a RMA in advance of returning an item will result in a service fee. A decision on the extent of warranty coverage on returned products is reserved pending inspection at Tronair. Any shipments to Tronair must be shipped freight prepaid. Freight costs on shipments to customers will be paid by Tronair on any warranty claims only. Any unauthorized modification of the Tronair products or use of the Tronair products in violation of cautions and warnings in any manual (including updates) or safety bulletins published or delivered by Tronair will immediately void any warranty, express or implied.

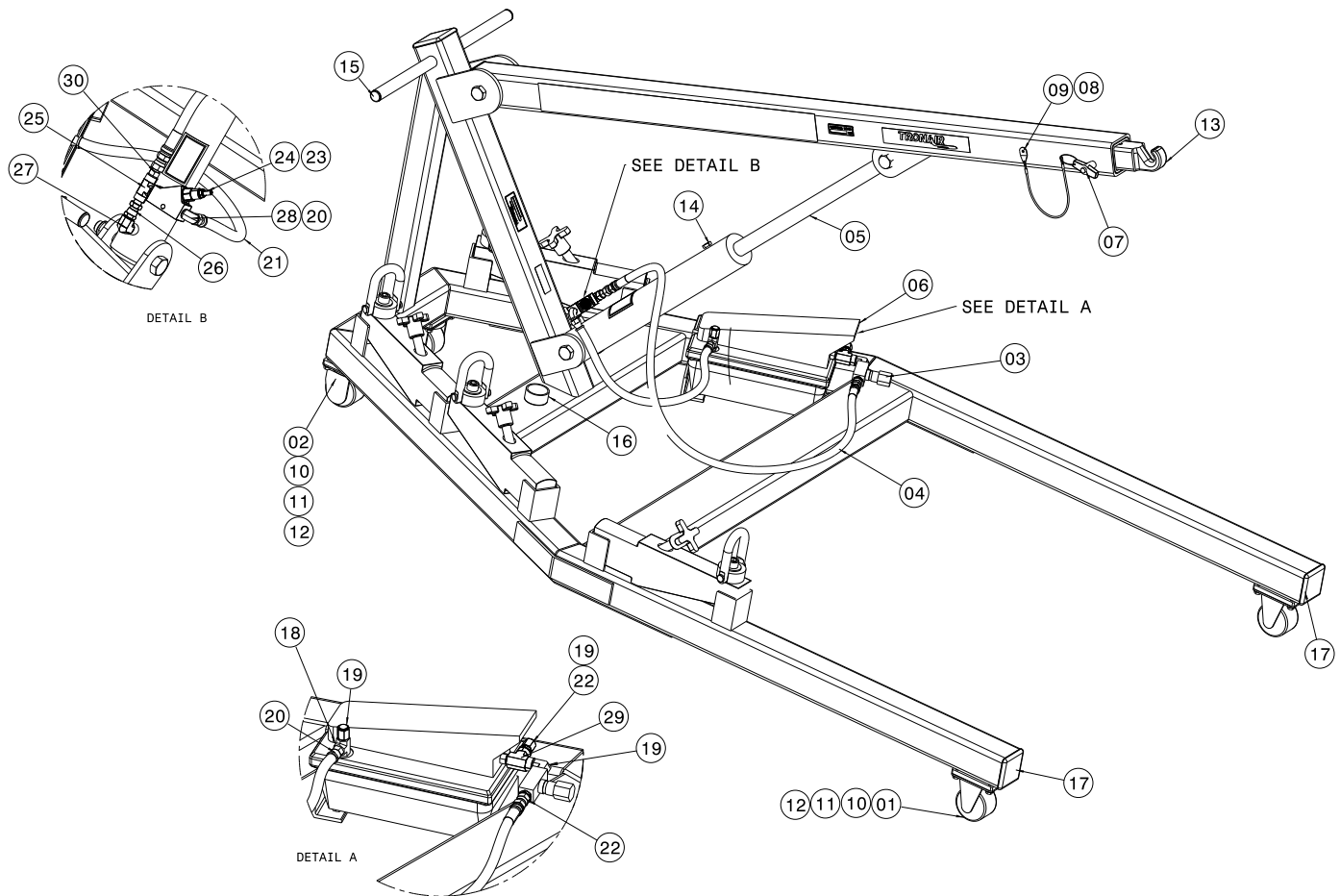
The obligations of Tronair expressly stated herein are in lieu of all other warranties or conditions expressed or implied. **Any unauthorized modification of the Tronair products or use of the Tronair products in violations of cautions and warnings in any manual (including updates) or safety bulletins published or delivered by Tronair will immediately void any warranty, express or implied and Tronair disclaims any and all liability for injury (WITHOUT LIMITATION and including DEATH), loss or damage arising from or relating to such misuse.**

## 10.0 APPENDICES

APPENDIX I	Declaration of Conformity
APPENDIX II	Enerpac Turbo II Air Pump
APPENDIX III	Royal Line 2500 PSI Cylinder

## Parts List

When ordering replacement parts/kits, please specify model, serial number and color of your unit.



Item	Part Number	Description	Qty
1	U-1123	Caster, Rigid	2
2	U-1124	Caster, Swivel	2
3	HC-2247	Valve, Flow Control	1
4	TF-1043-06*38.00	Hose, 3/8 ID	1
5	HC-2346	Cylinder, Hydraulic	1
6	HC-2347	Pump, Hydraulic	1
7	G-1310-0831	Pin, T-Handle Ball Lock	1
8	H-1026*07.0	Lanyard	1
9	G-1351-02	Rivet	1
10	G-1100-106504	Bolt	16
11	G-1250-1060N	Flatwasher	16
12	G-1251-1060R	Lockwasher	16
13	J-4122	Adapter, Hook	1
14	H-3016	Vent, Breather	1
15	H-2589	Cap, Plug	2
16	HJ-532-01	Pad, Jack	1
17	H-2649-16	Cap, Plug	2
18	N-2017-10-S	Tee, Male Run	1
19	N-2008-05-S	Cap	2
20	N-2026-03-S	Swivel, JIC 37° Hose Fitting	2



**Parts List**

When ordering replacement parts/kits, please specify model, serial number and color of your unit.

Item	Part Number	Description	Qty
21	TF-1047-04*15.0	Hose, 3/8 Gray	1
22	N-2009-10-S	Swivel, Female, 37° JIC x 3/8	2
23	HC-2653	Manifold, In-Line	1
24	HC-2652	Cartridge, Relief Valve	1
25	N-2208-03-S	Tee, Male Branch	1
26	N-2030-03-S	Swivel, #6 JIC x 1/4 NPT	2
27	N-2005-10-S	Elbow, 3/8 Male	1
28	N-2005-08-S	Elbow, Male	1
29	N-2209-06-S	Tee, Street	1
30	N-2009-08-S	Connector, Male	1





## **APPENDIX I**

### **Declaration of Conformity**





## DECLARATION of CONFORMITY

The design, development and manufacture is in accordance with European Community guidelines

Strut Service Device  
14-6919-0100

Relevant provisions complied with by the machinery:  
2006/42/EC

Relevant standards complied with by the machinery:  
EN ISO 12100-1

Identification of person empowered to sign on behalf of the Manufacturer:

A handwritten signature in black ink that reads "Patrick Finch". The signature is written in a cursive style and is positioned above a solid horizontal line.

Quality Assurance Representative





## APPENDIX II

### Enerpac Turbo II Air Pump



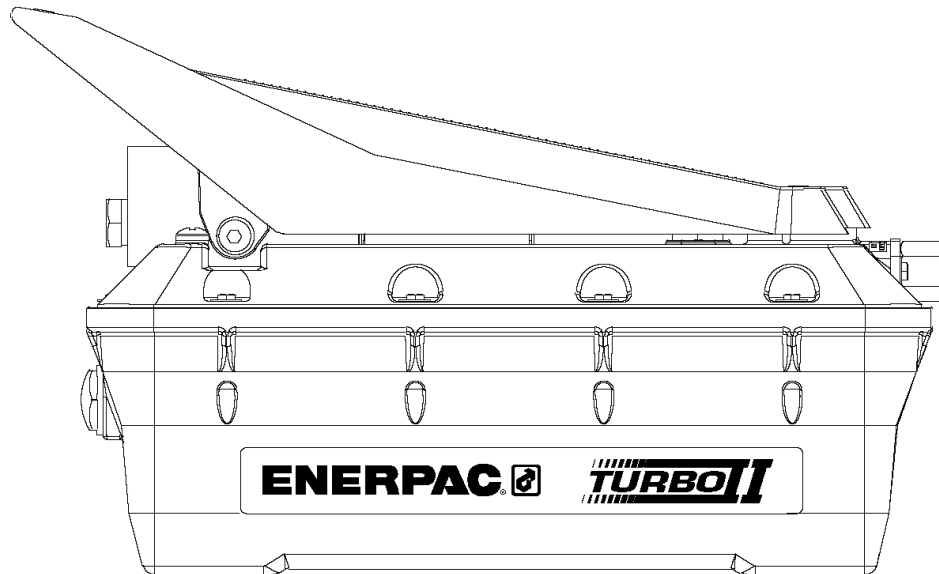


**To Protect Your Warranty, Use Only ENERPAC Hydraulic Oil.**

Enerpac recommends that all kit components be installed to insure optimum performance of the repaired product.

**Note: Storing the pump in the vertical position may cause it to lose its prime. If pump loses its prime:**

1. Remove cover.
2. Remove relief valve.
3. Fill chamber with oil.
4. Apply Loctite 545 to threads and torque to 10-12 ft-lbs. [14-16 Nm].
5. Replace pump cover. See Figure 1 for gasket orientation detail and cover screw torquing sequence.



**Contents:**

Figure 1 — Treadle Assembly, T Version .....	2	Figure 7 — Air Motor Assembly .....	8
Figure 2 — Treadle Assembly, M, C, S Version .....	3	Figure 8 — Release Valve.....	9
Figure 2a & 2b — Handle Assembly, R Version .....	4	Figure 9 — Manual Valve.....	10
Figure 3 — Cover Assembly.....	5	Figure 10 — Pump Manifolds, PAS Version .....	11
Figure 4 — Hydraulic Section Detail .....	6	Figure 11 — Pump Manifold, PAC Version.....	11
Figure 5 — Seal Push Tool .....	7	Table 1 — Relief Valve Setting.....	12
Figure 6 — Seal Push Tool .....	7	Table 2 — Repair Kit Application.....	12

\* Turbo II original release starts at Date Code "C".

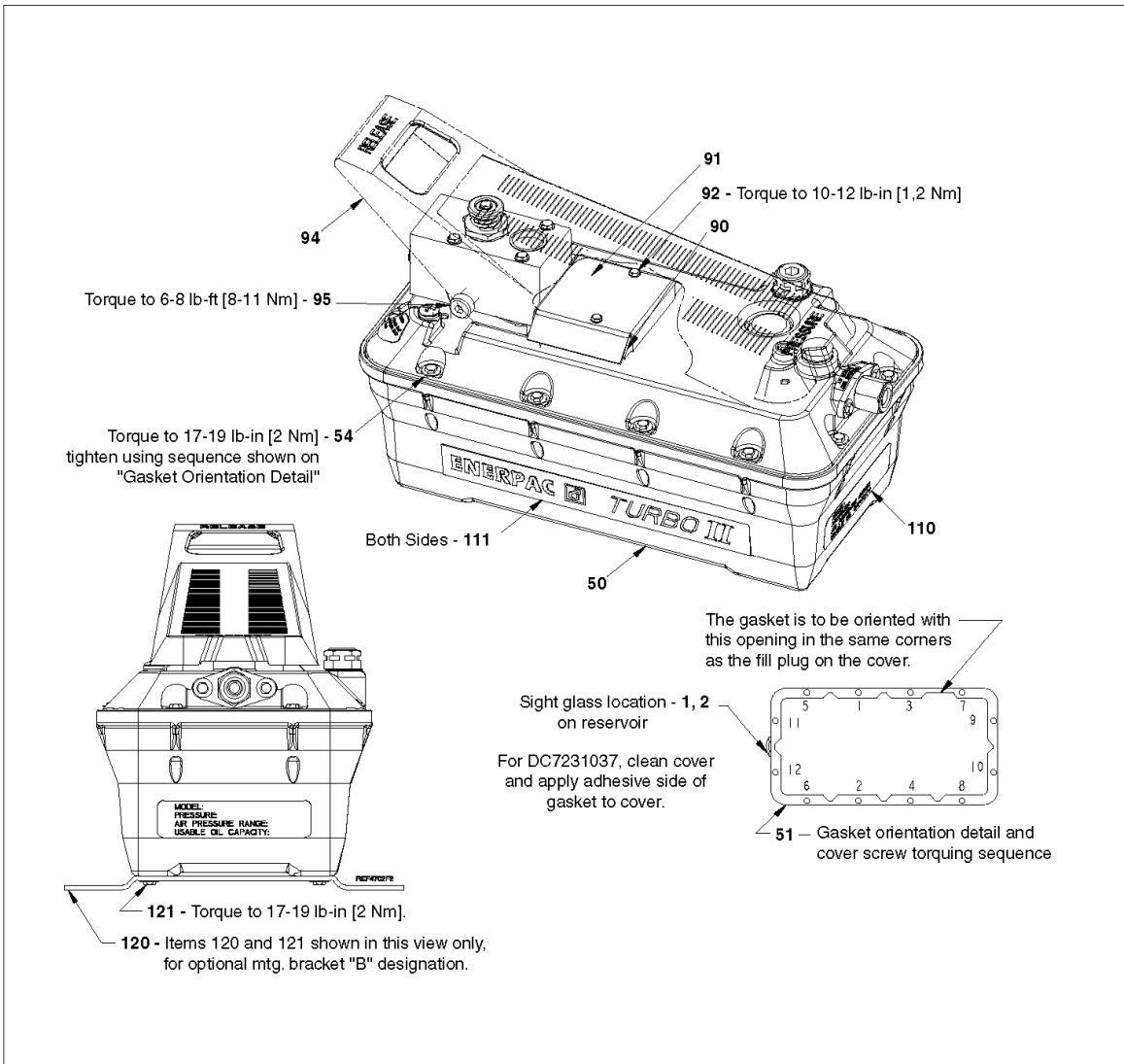


Figure 1, Treadle Assembly, T Version

Repair Parts List for Figure 1							
Item	Part Number	Qty.	Description	Item	Part Number	Qty.	Description
1	DA12288022	1	Sight Glass	91	DA5690098	1	Muffler Cover
2	★ B1908503	1	O Ring	92	DC7851028	2	Hi Lo Screw
50	DC4321900SR	1	Reservoir, 2 L, Yellow	94	DA4849218	1	Treadle
	DC4322900SR	1	Reservoir, 2 L, Black	95	DA4236242	2	Shoulder Screw
	DC4323900SR	1	Reservoir, 2 L, Red	110	DA4296026	1	Model No. Decal
	DC4320900SR	1	Reservoir, 5 L, Black	111	DC2262026	2	Decal, Enerpac Turbo II Bk
51	★ DC4027167	1	Reservoir Gasket, 2 L		DC2260026	2	Decal, Enerpac Turbo II Wht
	†★ DC7231037	1	Reservoir Gasket, 5 L (foam)	120	DA5389111	2	Mtg. Bracket
54	DA5938028	12	Hi Lo Screw	121	DA5938028	4	Hi Lo Screw
90	DA8625116	1	Muffler				

★ Items included in Pump Repair Kit, see Table 2 on page 12.  
† Replaces DC714517 O-ring gasket.

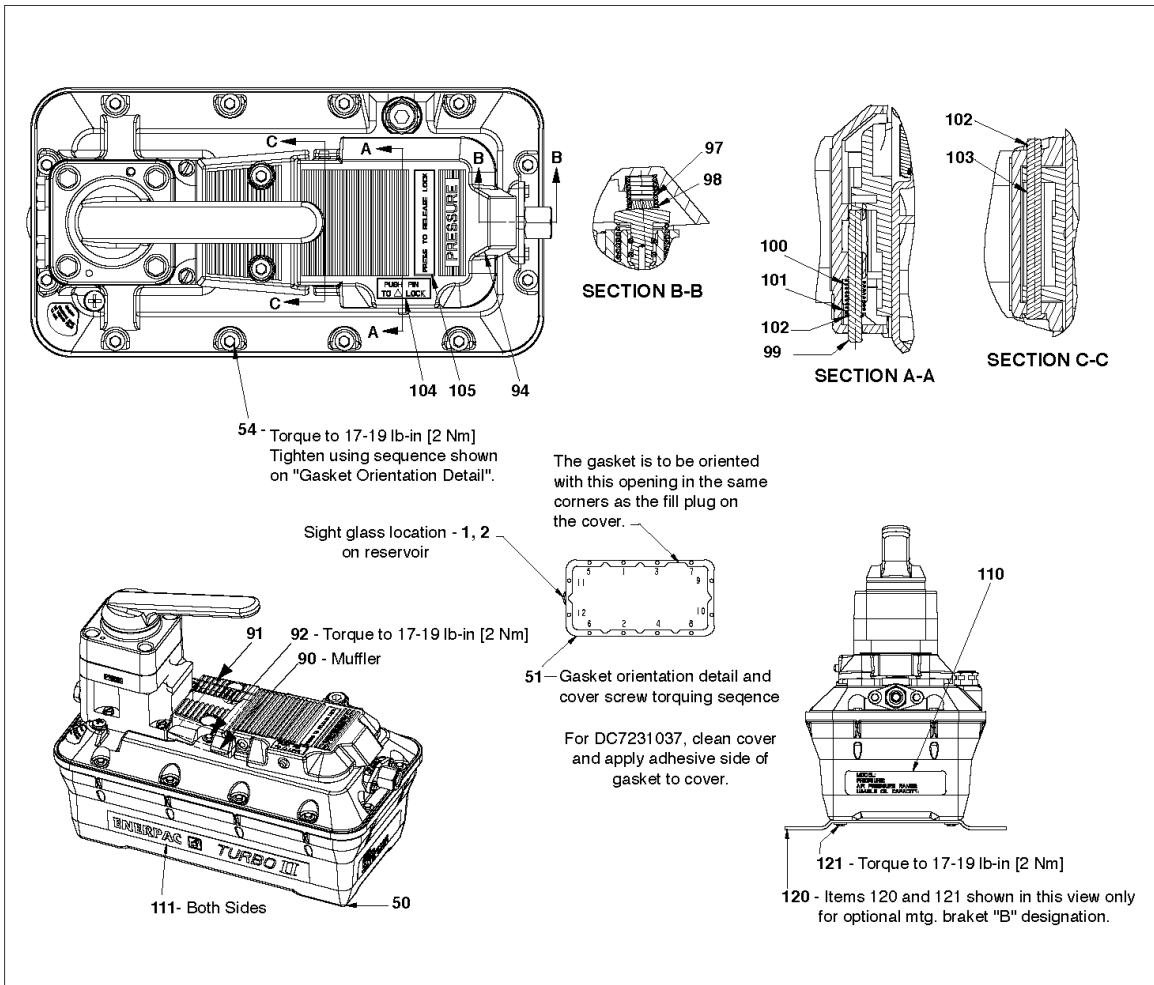


Figure 2, Treadle Assembly, M, C, S Version

Repair Parts List for Figure 2						
Item	Part Number	Qty.	Description	Item	Part Number	Qty. Description
1	DA12288022	1	Sight Glass	97	DA8506110	1 Spring
2	★ B1908503	1	O Ring	98	DA8670013	1 Spring Guide
50	DC4321900SR	1	Reservoir, 2 L, Yellow	99	DA7940061	1 Latch Pin
	DC4322900SR	1	Reservoir, 2 L, Black	100	DA8508110	1 Spring
	DC4323900SR	1	Reservoir, 2 L, Red	101	DA8505186	1 Spacer
	DC4320900SR	1	Reservoir, 5 L, Black	102	DA5025349	2 Ret. Ring
51	★ DC4027167	1	Reservoir Gasket, 2 L	103	DA7939061	1 Hinge Pin
	†★ DC7231037	1	Reservoir Gasket, 5 L (foam)	104	DA8744026	1 Decal
54	DA5938028	12	Hi Lo Screw	105	DA8743026	1 Decal
90	DA8625116	1	Muffer	110	DA4296026	1 Model No. Decal
91	DA7935111	1	Mtg. Bracket Casting Muffer Cover	111	DC2262026	2 Decal, Enerpac Turbo II Blk
				DC2260026	2 Decal, Enerpac Turbo II Wht	
92	DA5938028	4	Hi Lo Screw	120	DA5389111	1 Mtg. Bracket
94	DA7937218	1	Treadle	121	DA5938028	4 Hi Lo Screw

★ Items included in Pump Repair Kit, see Table 2 on page 12.  
† Replaces DC714517 O-ring gasket.

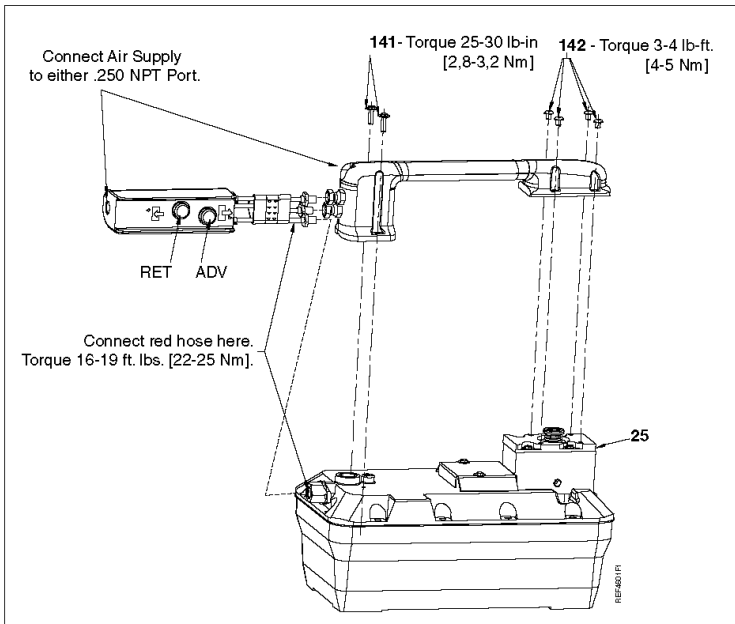


Figure 2a, Remote Pendant Turbo Pump Assembly

Repair Parts List for Figure 2a			
Item	Part Number	Qty.	Description
25	DC2355186	1	Valve Spacer
141	* DA5938028	2	Hi Lo Screw
142	* B1322028	4	10-32 x .50 Screw
* Items included in DD1725070K Handle Retrofit Kit.			

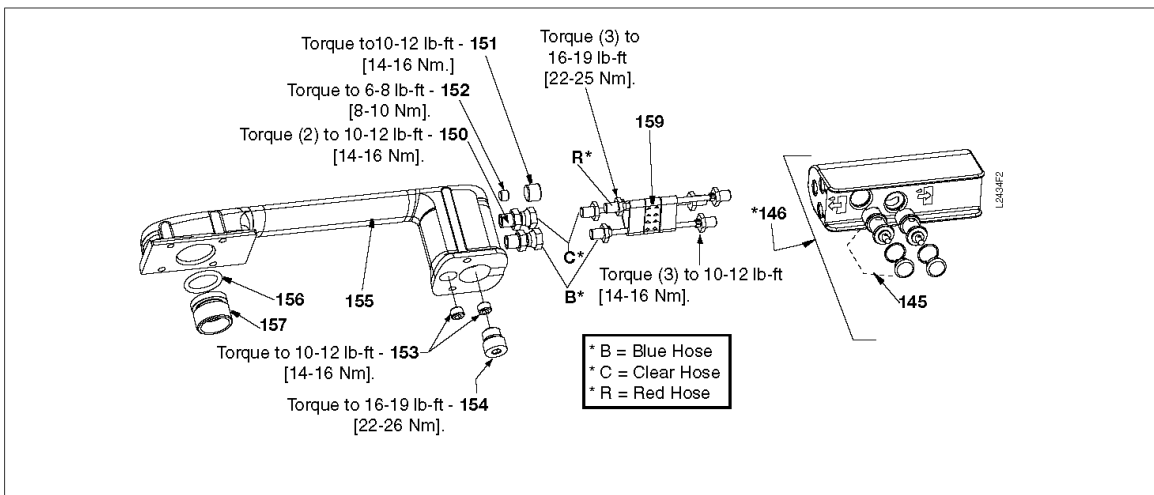


Figure 2b, Pendant Handle Assembly

Repair Parts List for Figure 2b							
Item	Part Number	Qty.	Description	Item	Part Number	Qty.	Description
145	DC2363660SR	2	Air Cartridge Valve	154	* B1005006	1	#6 SAE Hex Plug
146	DC2354840SR	1	Air Pendant Assy. (includes No. 145)	155	◆*★ DC2347070	1	Handle Assembly
150	DC2367006	2	1/8" NPT Swivel Fitting	154	* B1019503	1	O-ring 70 DUPR-213
151	* A1008245	1	Hex Plug	157	◆*★ DC473051	1	Pneumatic Dump Piston
152	* A1006245	1	1/16 Flush Plug w/Sealant	159	DC2365646SR	1	Hose Assembly
153	* A1007245	2	1/8 Flush Plug w/Sealant				

★ Items included in Pump Repair Kit, see Table 2 on page 12.

\* Items included in DD1725070K Handle Retrofit Kit.

◆ Handle (item 155) and piston (item 157) MUST be replaced as a set. Old and new parts are NOT interchangeable.

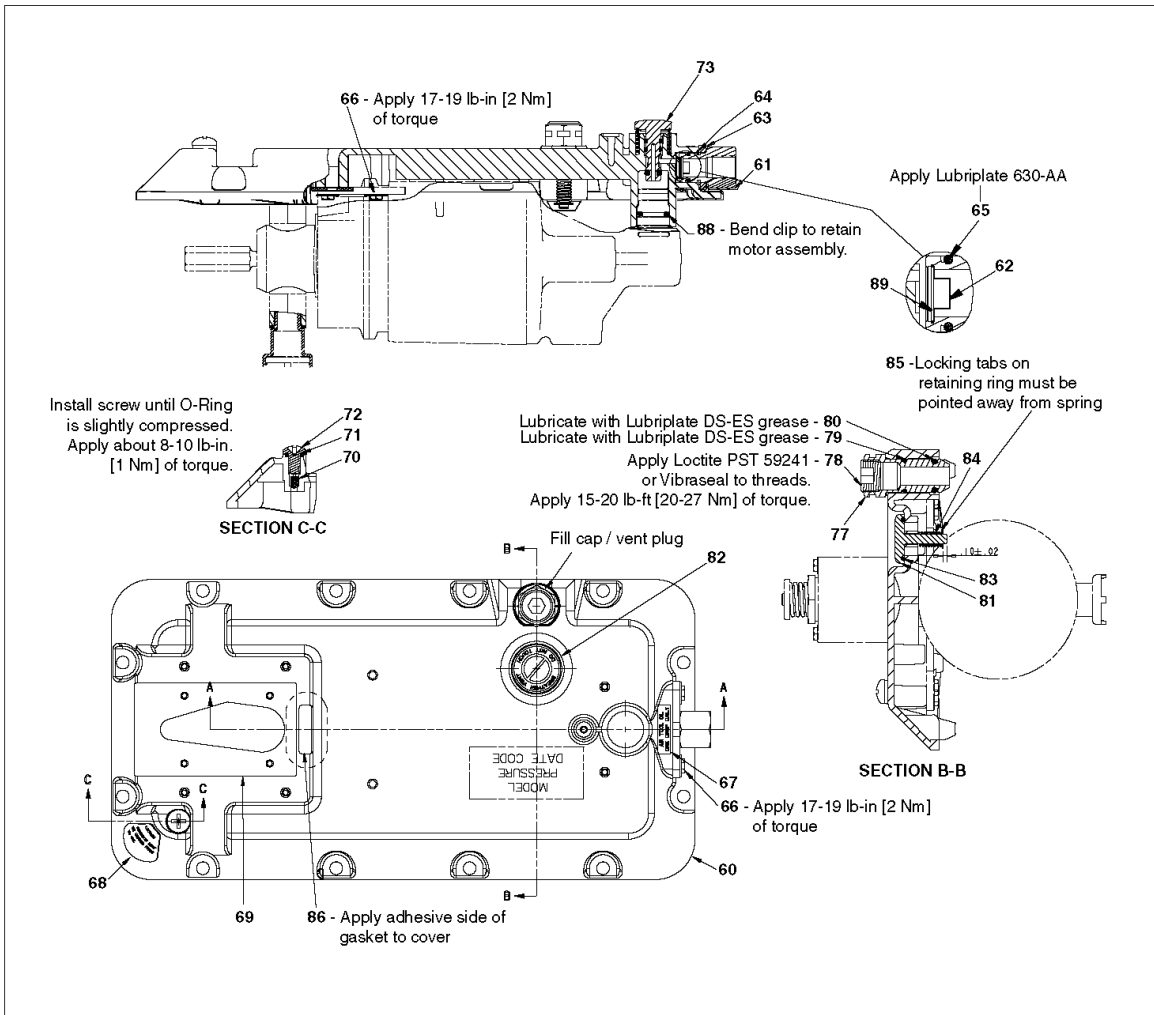


Figure 3, Cover Assembly

Repair Parts List for Figure 3

Item	Part Number	Qty.	Description	Item	Part Number	Qty.	Description
60	DC3913900SR	1	Blk Cover Assy. (incl 61-87)	73	DA4802051SR	1	Air Button
	DC3914900SR	1	Red Cover Assy. (incl 61-87)	77	DA4871118	1	Breather
61	DA5295034	1	Swivel Coupler	78	A1009245	1	3/8 Flush Plug W/Sealant
62	★ A8001018SR	1	Filter	79	★ DA5349503	1	O Ring (Wear Coated)
63	DA4847799	1	Stamped Bracket	80	★ B1010503	1	O Ring
64	DA5026349	1	Ret. Ring	81	DC708440	1	Poppet
65	★ B1220503	1	O Ring Ref B839503	82	U972038026-2	1	Breather Vent Decal
66	DA5938028	6	Hi Lo Screw	83	B1224503	1	O Ring Ref J711041
67	U972038026-3	1	Air Tool Oil Decal	84	DC821110	1	Compression Spring
68	DA7931026	1	Caution Decal	85	DC4077160	1	3/16" Retainer
69	★ DC4997900K	1	Gasket Set	86	†★ DA6956037	1	Gasket
70	★ DA4390118	1	Filter	88	★ DA5521149	1	Retaining Pin
71	★ B1005503	1	O Ring	89	★ DC5217049	1	Retaining Ring
72	★ DC7838028	1	1/4 x 3/8" Hi Lo Screw				

★ Items included in Pump Repair Kit, see Table 2 on page 12.

† Replaces and interchangeable with gasket DC7872037.

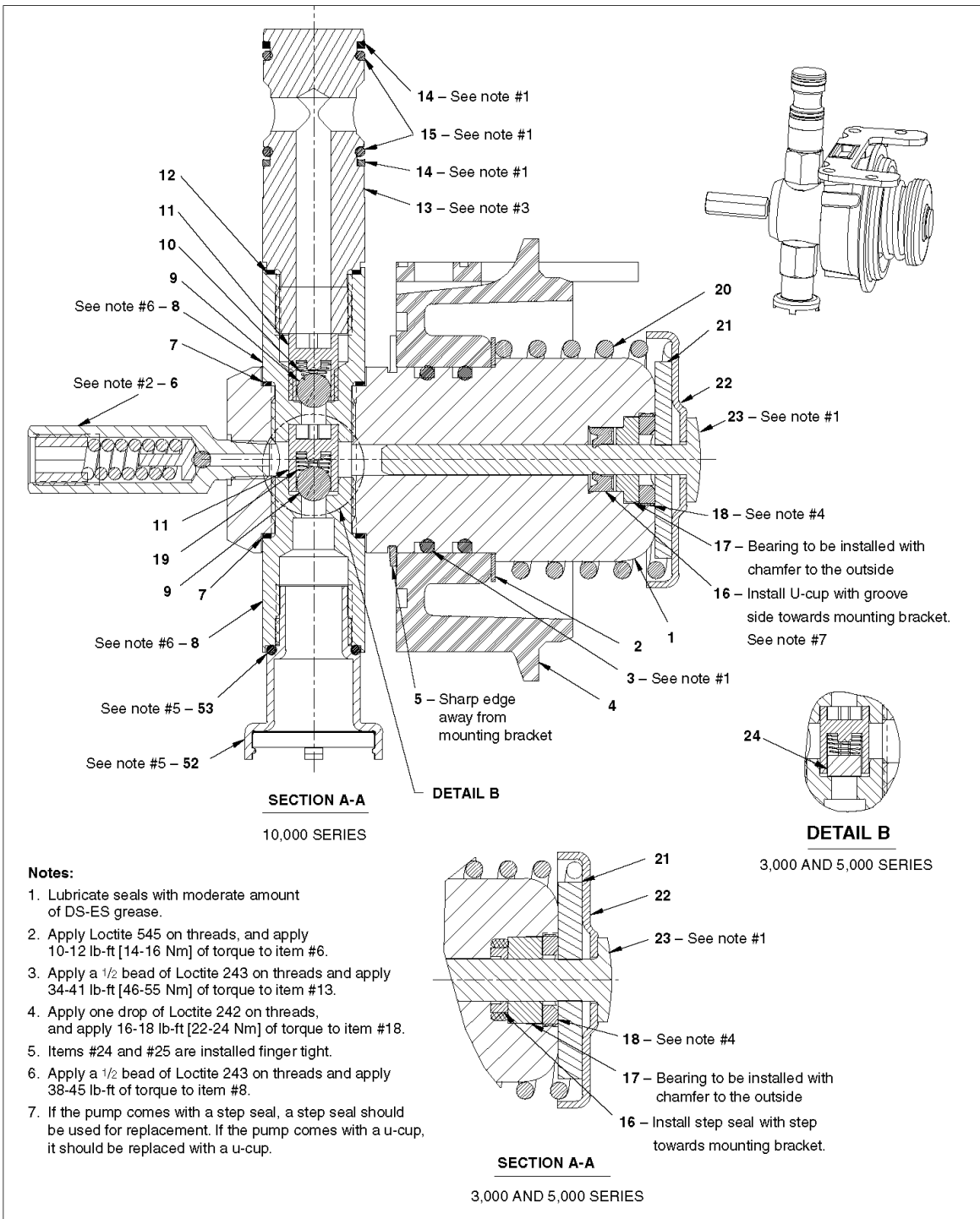


Figure 4, Hydraulic Section Detail

Repair Parts List for Figure 4								
Item	Part Number	Qty.	Description	Item	Part Number	Qty.	Description	
1	DC114030	1	Hydraulic Cylinder, Turbo 10 KSI	17	★ CB624108	1	Bearing 10 KSI	
	DC116030	1	Hydraulic Cylinder, Turbo 3 KSI		★ DA9056108	1	Bearing 3 KSI	
	DC115030	1	Hydraulic Cylinder, Turbo 5 KSI		★ DA5352155	1	Bearing 5 KSI	
2	DA4298108	1	Washer	18	★ DA1204044	1	Bearing Retainer 10 KSI	
3	★ B1258503	2	O-Ring		★ DA7888044	1	Bearing Retainer 3 KSI	
4	DA4287111	1	Mtg. Bracket		★ DA1204044	1	Bearing Retainer 5 KSI	
5	DA4343044	1	Bowed Ret. Ring	19	★ DA6911210	1	Conical Spring	
6	DA8802900SR	1	Relief Valve Assy	20	DA4285110	1	Spring	
7	★ DA3811167	2	Copper Gasket	21	DA6600108	1	Rubber Washer 10 KSI	
8	DC283290SR	2	Seat		DA9280108	1	Rubber Washer 3 KSI	
9	★ B1007016	2	1/4" Dia. Ball		DA5976108	1	Rubber Washer 5 KSI	
10	★ DA4874110	1	Conical Spring	22	DA4284108	1	Spring Washer, Turbo, 10 KSI	
11	★ DA3682013	2	Ball Guide		DA9281108	1	Spring Washer, Turbo, 3 KSI	
12	★ DC170167	1	Copper Gasket		DA4628108	1	Spring Washer, Turbo, 5 KSI	
13	DC5268SR	1	Pressure Tube 10 KSI	23	DC6428040	1	Plunger, 10 KSI	
14	★ DA4974367	2	Backup Ring		DC6406040	1	Plunger, 3 KSI	
15	★ B1016803	2	O-Ring - Global		DC6427040	1	Plunger, 5 KSI	
16	★ CB918041	1	U-Cup 10 KSI	24	★ DC4440	1	Poppet	
	★ DA9269476	1	Step Seal 3 KSI	52	DC442900SR	1	Intake Tube Assy	
	★ DC6446041	1	U-Cup 3 KSI	53	★ B1221503	1	O-Ring Ref. C403503	
	★ DA5351476	1	Step Seal 5 KSI					
	★ DDC6447041	1	U-Cup 5 KSI					

See Note by Balloon 16 on Page 6.

★ Items included as part of Repair Kits: (DC2222900K, 10,000 Series); (DC2220900K, 3,000 series); (DC2221900K, 5,000 series)  
Also included in complete Pump Repair Kit, see Table 2 on page 12.

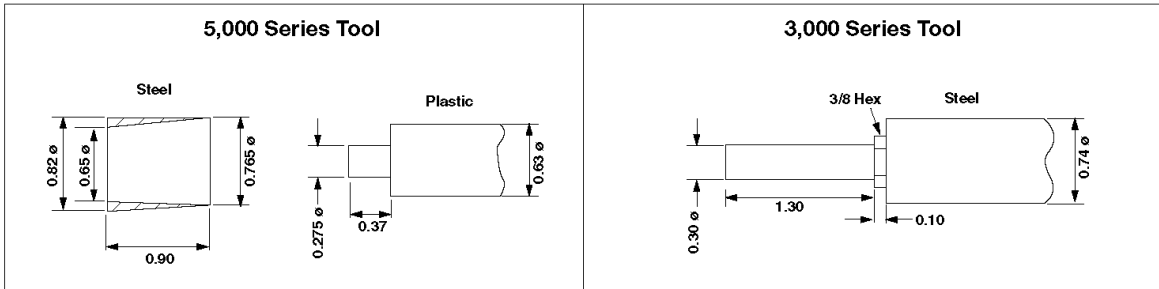


Figure 5, Seal Push Tool

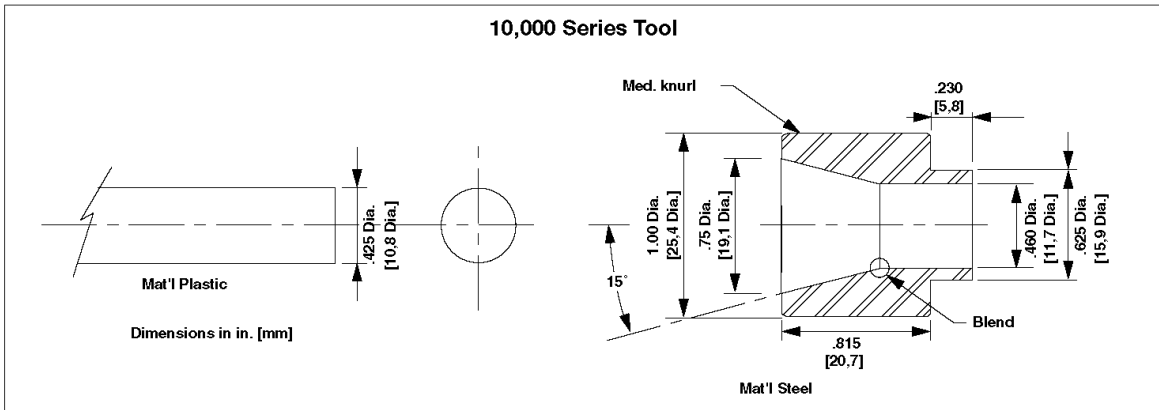


Figure 6, Seal Push Tool

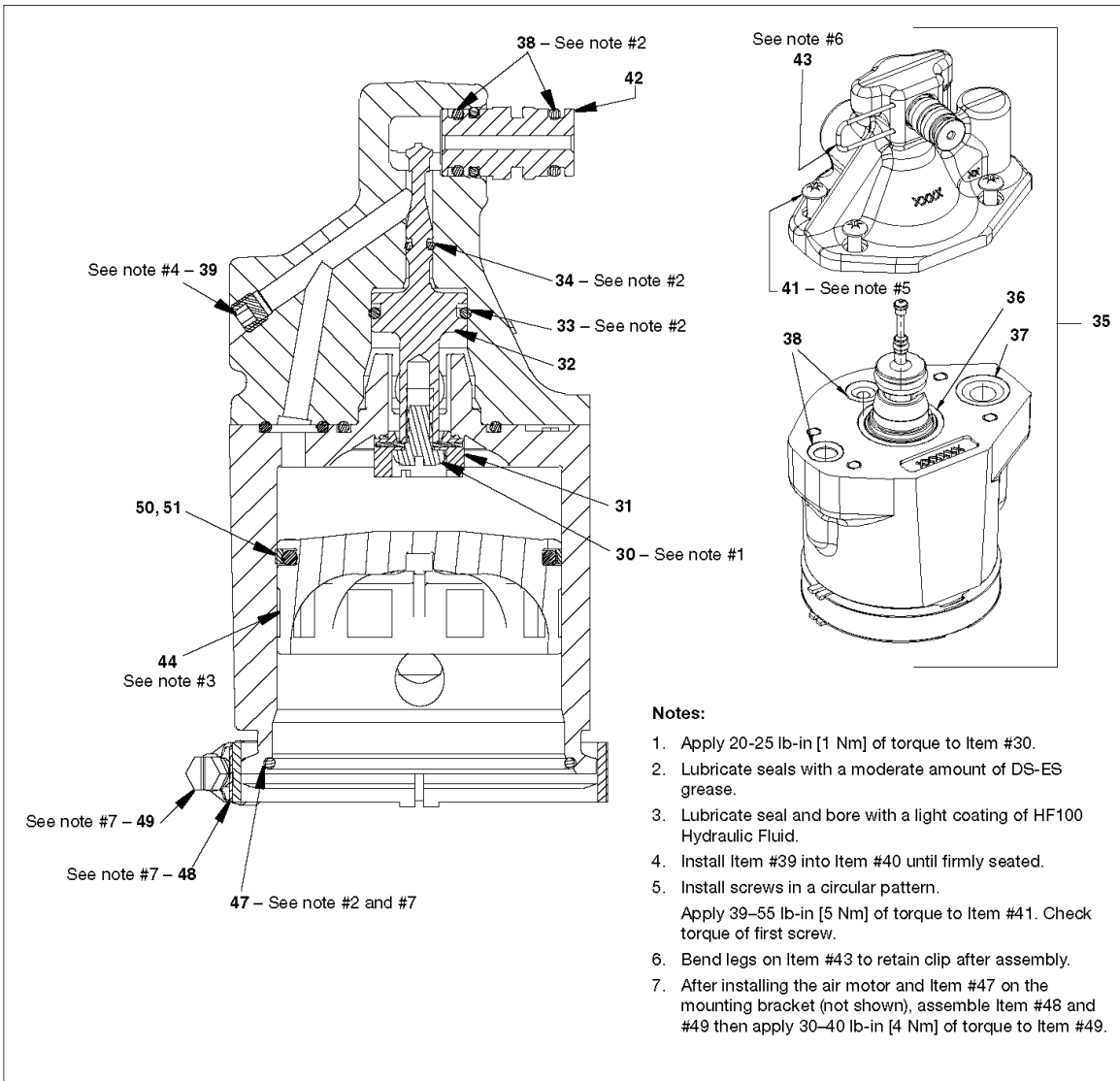


Figure 7, Air Motor Assembly

Repair Parts List for Figure 7

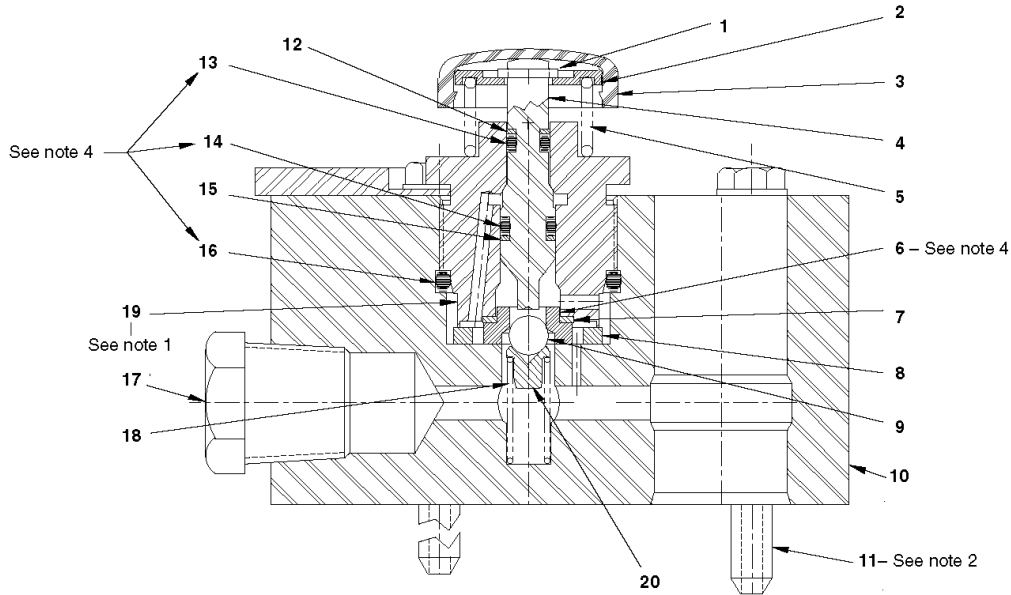
Item	Part Number	Qty.	Description	Item	Part Number	Qty.	Description
30	★ DA7085028	1	Screw – .250-20 Special	41	DC2261628	4	Screw, Torx (.25-20 x .75 lg.)
31	★ DA3706120	1	B/U Washer	42	DC2182099	1	Extension Fitting, Air Motor
32	★ DC2234051	1	Piston	43	★ DA5521149	1	Retaining Pin
33	★ B1013503	1	O-Ring	44	DC4122051SR	1	Air Motor Piston
34	★ B1001503	1	O-Ring (.12 x .25 x .06)	47	★ B1282503	1	O-Ring
35	DC2200900SR	1	Air Motor, Complete	48	DA2687111	2	Clamp Brk.
36	★ B1260503	1	O-Ring	49	DA2686299	1	Hose Clamp
37	★ B1014503	1	O-Ring Ref M760041	50	★ DC4119703	1	O-ring
38	★ B1009503	4	O-Ring Ref K1041	51	★ DC4120141	1	Glyde Ring
39	A1006245	1	1/16 Flush Plug w/Sealant				

★ Items included in and available only as part of Repair Kit DC2234900SR.  
Also included in complete Pump Repair Kit, see Table 2 on page 12.



**Notes:**

1. Torque Item #19 to 72–78 lb-ft [98-105 Nm] with threads lubricated.
2. Torque Item #11 to 17–19 lb-in [2 Nm].
3. Lubricate all seals and mating surfaces w/DS-ES Grease prior to assembly unless otherwise noted.
4. Prior to assembling Item #6 seat, coin seat with a  $\phi$  .219 ball to a force of 95–105 lbs. [444 N].



**Figure 8, Release Valve**

**Repair Parts List for Figure 8**

Item	Part Number	Qty.	Description	Item	Part Number	Qty.	Description
1	★ DA5025349	1	Ret. Ring	11	DA4294028	4	Thd. Form Screw
2	DA4848108	1	Spring Washer	12	★ B1006564	1	B/U Washer
3	★ DA4831020	1	Cap	13	★ B1001503	1	O-Ring (.12 x .25 x .06)
4	DA4832040	1	Release Plunger	14	★ B1003503	1	O-Ring (.19 x .31 x .06) BUNA
5	★ DA6971110	1	Spring	15	★ B1008564	1	Back-up Washer
6	★ CB581290	1	Ball Seat	16	★ B1118903	1	O-Ring
7	★ P20037	1	Gasket	17	R515245-2	1	Plug
8	★ CL344167	1	Gasket	18	★ CJ656110	1	Spring
9	★ B1006016	1	7/32" Dia. Ball	19	DA4872013	1	Release Guide
10	DA4833190	1	Manifold	20	★ DA7572013	1	Ball Guide

★ Items included in and available only as part of Repair Kit DA4836900K1.  
Also included in complete Pump Repair Kit, see Table 2 on page 12.

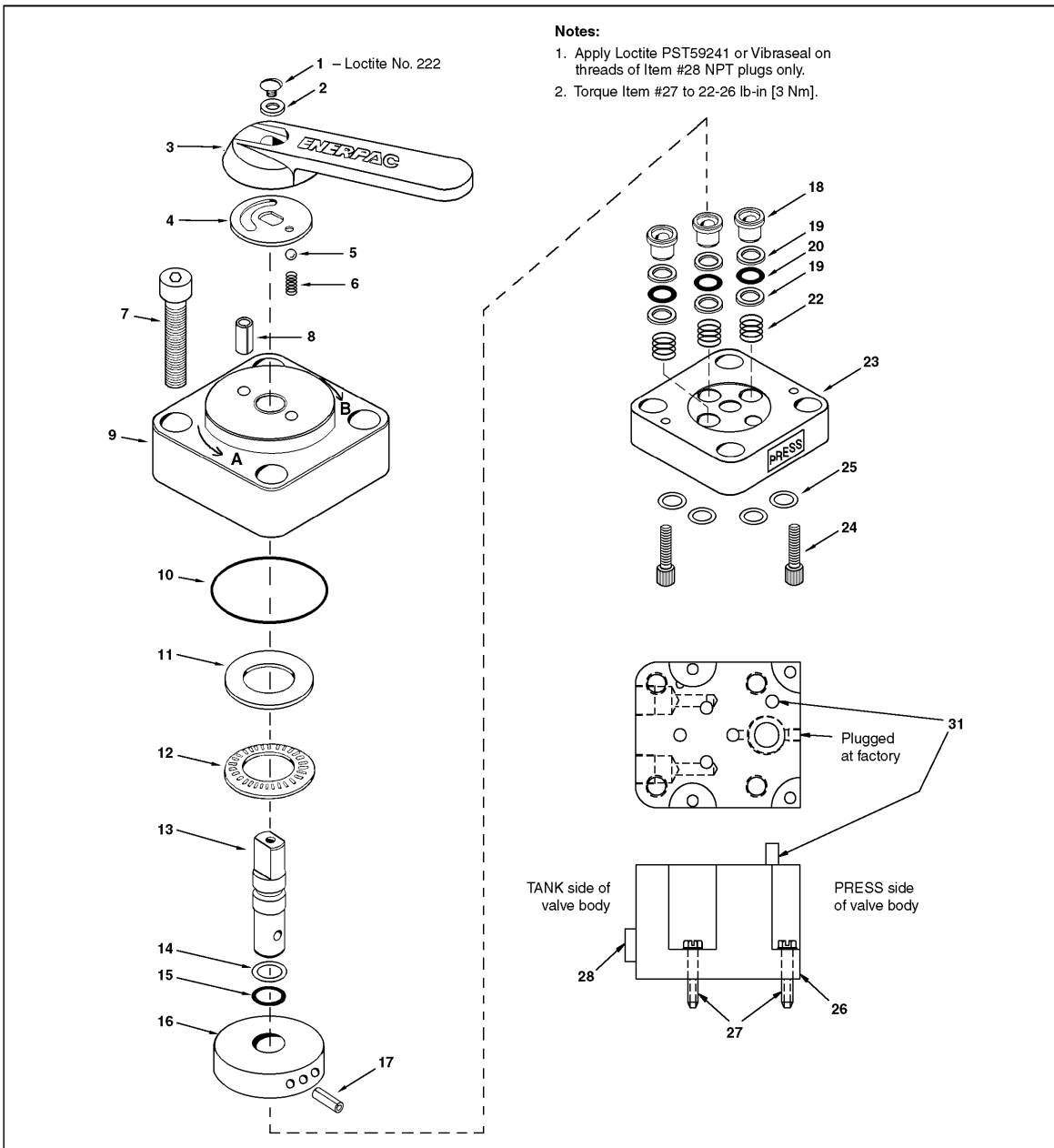


Figure 9, Manual Valve

**IMPORTANT**

Do not attempt to repair the pump by substituting another valve. The 4-way manual valve used on Turbo II pumps is not interchangeable with a standard Enerpac VM-4 valve. Using a valve that is not designed for this mounting configuration may result in the reservoir becoming pressurized during operation.

**For complete replacement valve, order:**

DA5118900SR for NPT Ports  
 DA9744900SR for BSPP Ports

Repair Parts List for Figure 9							
Item	Part Number	Qty.	Description	Item	Part Number	Qty.	Description
1	A8076048	1	Screw	17	B1109057	1	Roll Pin
2	B1086108	1	Washer	18	DA9560041	3	Seal
3	Y325070	1	Handle	19	★ B1011564	6	Back-Up Washer
4	A8005071	1	Disc	20	★ B1006503	3	O-Ring
5	★ B1006016	1	7/32" Ball	22	★ CB28110	3	Spring
6	★ A8039110	1	Spring	23	CH539190	1	Body
7	B1389028	4	Bolt	24	B1326028	2	Bolt
8	B1126057	1	Roll Pin	25	★ B1111803	4	O-Ring
9	CB324001	1	Valve Cap	26	DA5132840SR	1	Manifold - NPT Ports
10	★ B1269503	1	O-Ring		DA9745840SR	1	Manifold - BSPP Ports
11	CB327101	1	Bearing Plate	27	DC1523028	4	Screw
12	CB328281	1	Bearing	28	CS235006	2	Plug - BSPP Ports
13	CH536104	1	Shaft		R515245-2	2	Plug - NPT Ports
14	★ B1012564	1	Back-Up Washer	30	DA5579026	1	Decal VM4 (not shown)
15	★ B1007503	1	O-Ring	31	B1051057	1	Pin
16	CH542950SR	1	Disc Assembly				

★ Indicates parts included in complete Pump Repair Kit, see Table 2 on page 12.

### Pump Manifolds

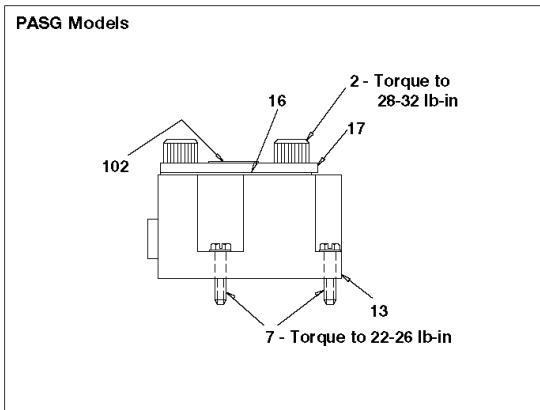


Figure 10, Pump Manifolds, PAS Version

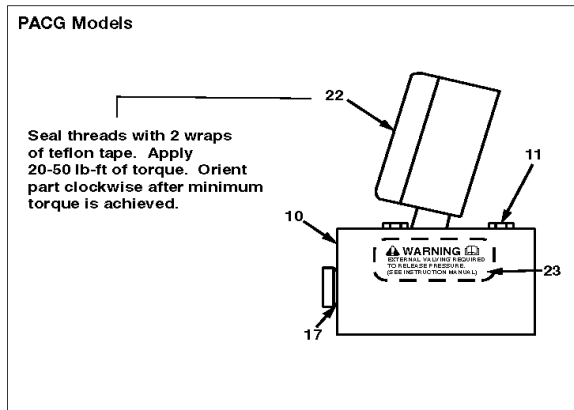


Figure 11, Pump Manifold, PAC Version

Repair Parts List for Figure 10							
Item	Part Number	Qty.	Description	Item	Part Number	Qty.	Description
2	B1323028	4	SCHS SAE Manifolds	13	DA9259840SR	1	Manifold BSPP
	CBA515028-1A	4	SHCS BSPP Manifolds	16	★ DA9787037	1	Gasket
7	DC1523028	4	Screw	17	DA9788098	1	Cover
13	DC94840SR	1	Manifold SAE	102	DA9884026	1	Warning Decal

Repair Parts List for Figure 11							
Item	Part Number	Qty.	Description	Item	Part Number	Qty.	Description
10	DA5307190	1	Valve Body - SAE Ports	22	G2517L	1	2.5" Gauge 0-6000 psi
	DA9747190	1	Valve Body - BSPP Ports		A1008245	1	Hex Plug (BSPP only)
11	DA4294028	4	Thread Forming Screw	23	DA9554026	1	Warning Decal
17	B1007503	1	O-Ring (SAE Only)				

★ Indicates parts included in and available only as part of Repair Kit. See Table 2 on page 12 for Repair Kit ordering information.

Table 1 - Relief Valve Settings		
Pump Model	Pressure Rating	Relief Valve Pressure Setting
PA_G1 _____	10,000 psi	10,400 to 11,000 psi
PA_G5 _____	5,000 psi	5,200 to 5,700 psi
PA_G3 _____	5,000 psi	5,200 to 5,700 psi

**For standard models with special pressure settings,**  
the model number will have a "dash" followed by 4 more digits to indicate the pressure setting.

To determine the pressure settings locate the model number stamp. The model number will be in the format PAYYYYY-XXXX, where XXXX is the maximum pressure rating. The relief valve should be set from (XXXX + 250 psi to (XXXX) + 750 psi).

Table 2 - Repair Kit Application	
Pump Model	Recommended Repair Kit
PATG1 _____ PARG1 _____	PATG1100K
PATG5 _____ PARG5 _____	PATG5100K
PATG3 _____ PARG3 _____	PATG3100K
PAMG1 _____	PAMG1400K
PAMG5 _____ PACG5 _____ PASG5 _____	PAMG5400K
PAMG3 _____ PACG3 _____ PASG3 _____	PAMG3400K

### Enerpac Worldwide Locations

✦ e-mail: [info@enerpac.com](mailto:info@enerpac.com)

✦ internet: [www.enerpac.com](http://www.enerpac.com)

**Africa**  
ENERPAC Middle East FZE  
Office 423, JAFZA 15  
P.O. Box 18004  
Jebel Ali, Dubai  
United Arab Emirates  
Tel: +971 (0)4 8872686  
Fax: +971 (0)4 8872687

**Australia, New Zealand**  
Actuant Australia Ltd.  
Block V Unit 3  
Regents Park Estate  
391 Park Road  
Regents Park NSW 2143  
(P.O. Box 261) Australia  
Tel: +61 297 438 988  
Fax: +61 297 438 648

**Brazil**  
Power Packer do Brasil Ltda.  
Rua dos Inocentes, 587  
04764-050 - Sao Paulo (SP)  
Tel: +55 11 5687 2211  
Fax: +55 11 5686 5583  
Toll Free in Brazil:  
Tel: 0800 891 5770  
[vendasbrasil@enerpac.com](mailto:vendasbrasil@enerpac.com)

**Canada**  
Actuant Canada Corporation  
6615 Ordan Drive, Unit 14-15  
Mississauga, Ontario L5T 1X2  
Tel: +1 905 564 5749  
Fax: +1 905 564 0305  
Toll Free:  
Tel: +1 800 268 4987  
Fax: +1 800 461 2456  
Technical Inquiries:  
[techservices@enerpac.com](mailto:techservices@enerpac.com)

**China**  
Actuant Industries Co. Ltd.  
No. 6 Nanjing Road  
Taicang Economic Dep Zone  
Jiangsu, China  
Tel: +86 0512 5328 7529  
+86 0512 5328 7500 7529  
Fax: +86 0512 5335 9690

**Actuant China Ltd. (Peking)**  
709B Diyang Building  
Xin No. 2  
Dong San Huan North Rd.  
Beijing City  
100028 China  
Tel: +86 10 845 36166  
Fax: +86 10 845 36220

**France, Switzerland**  
francophone  
ACTUANT - ENERPAC  
France S.A., ZA de Courtaboeuf  
32, avenue de la Baltique  
91140 Villebon / Yvette  
France  
Tel: +33 1 60 13 68 68  
Fax: +33 1 69 20 37 50

**Germany, Austria, Switzerland,**  
**Greece, Baltic States, Central**  
**and Eastern Europe**  
ENERPAC GmbH  
P.O. Box 300113  
D-40401 Düsseldorf  
Willstätterstrasse13  
D-40549 Düsseldorf  
Germany  
Tel: +49 211 471 490  
Fax: +49 211 471 49 28

**India**  
ENERPAC Hydraulics  
(India) Pvt. Ltd.  
No. 1A,  
Peenya Industrial Area,  
IInd Phase  
Bangalore, 560 058 India  
Tel: +91 80 40 792 777  
Fax: +91 80 40 792 792

**Italy**  
ENERPAC S.p.A.  
Via Canova 4  
20094 Corsico (Milano)  
Tel: +39 02 4861 111  
Fax: +39 02 4860 1288

**Japan**  
Applied Power Japan LTD KK  
Besshochou 85-7  
Kita-ku,  
Saitama-shi 331-0821  
Japan  
Tel: +81 48 662 4911  
Fax: +81 48 662 4955

**Middle East, Turkey and**  
**Caspian Sea**  
ENERPAC Middle East FZE  
Office 423, JAFZA 15  
P.O. Box 18004  
Jebel Ali, Dubai  
United Arab Emirates  
Tel: +971 (0)4 8872686  
Fax: +971 (0)4 8872687

**Russia and CIS**  
**(excl. Caspian Sea Countries)**  
Actuant LLC  
Admiral Makarov Street 8  
125212 Moscow, Russia  
Tel: +7-495-9809091  
Fax: +7-495-9809092

**Sweden, Denmark, Norway,**  
**Finland and Iceland**  
ENERPAC Scandinavia AB  
Fabriksgatan 7  
412 50 Gothenburg  
Sweden  
Tel: +46 31 7990281  
Fax: +46 31 7990010  
[scandinavianinquiries@enerpac.com](mailto:scandinavianinquiries@enerpac.com)

**Singapore**  
Actuant Asia Pte. Ltd.  
37C, Benoi Road Pioneer Lot,  
Singapore 627796  
Tel: +65 68 63 0611  
Fax: +65 64 84 5689  
Toll Free: +1800 363 7722  
Technical Inquiries:  
[tech.service-sg@enerpac.com](mailto:tech.service-sg@enerpac.com)

**South Korea**  
Actuant Korea Ltd.  
3Ba 717,  
Shihwa Industrial Complex  
Jungwang-Dong, Shihung-Shi,  
Kyunggi-Do  
Republic of Korea 429-450  
Tel: +82 31 434 4506  
Fax: +82 31 434 4507

**Spain and Portugal**  
ENERPAC SPAIN, S.L.  
Avda. Los Frailes, 40 - Nave C  
& D  
Pol. Ind. Los Frailes  
28814 DAGANZO DE ARRIBA  
(Madrid)  
Spain  
Tel: +34 91 684 86 06  
Fax: +34 91 684 86 11

**Sweden, Denmark, Norway,**  
**Finland and Iceland**  
Enerpac Scandinavia AB  
Fabriksgatan 7  
412 50 Gothenburg  
Sweden  
Tel: +46 (0) 31 7990281  
Fax: +46 (0) 31 7990010  
Inquiries:  
[Scandinavianinquiries@enerpac.com](mailto:Scandinavianinquiries@enerpac.com)

**The Netherlands, Belgium,**  
**Luxembourg**  
ENERPAC B.V.  
Galvanistraat 115, 6716 AE Ede  
P.O. Box 8097, 6710 AB Ede  
The Netherlands  
Tel: +31 318 535 800  
Fax: +31 318 525 613  
+31 318 535 848  
[beneluxinquiries@enerpac.com](mailto:beneluxinquiries@enerpac.com)  
Technical Inquiries Europe:  
[techsupport.europe@enerpac.com](mailto:techsupport.europe@enerpac.com)

**United Kingdom, Ireland**  
Enerpac Ltd  
Bentley Road South  
Darlaston, West Midlands  
WS10 8LQ, United Kingdom  
Tel: +44 (0)121 50 50 787  
Fax: +44 (0)121 50 50 799

**USA, Latin America**  
**and Caribbean**  
ENERPAC  
P.O. Box 3241  
6100 N. Baker Road  
Milwaukee, WI 53209 USA  
Tel: +1 262 781 6600  
Fax: +1 262 783 9562

User inquiries: +1 800 433 2766  
Inquiries/orders: +1 800 558 0530  
Technical Inquiries:  
[techservices@enerpac.com](mailto:techservices@enerpac.com)

**ENERPAC**  
704 W. Simonds  
Dallas, TX 75159 USA  
Tel: +1 972 287 2390  
Fax: +1 972 287 4469

09/30/09

All Enerpac products are guaranteed against defects in workmanship and materials for as long as you own them. For your nearest authorized Enerpac Service Center, visit us at [www.enerpac.com](http://www.enerpac.com)



**APPENDIX III**

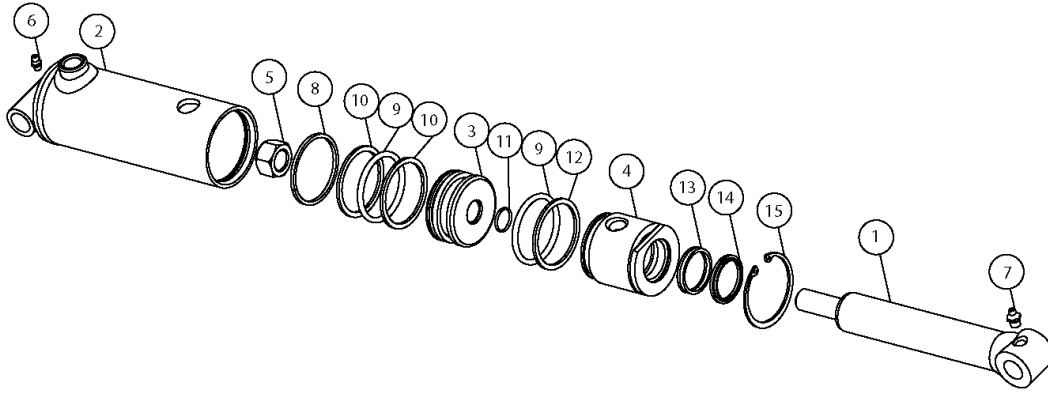
**Royal Line  
2500 psi Cylinder**





# ROYAL LINE

2500 PSI



## PMC-5400 SERIES 2 1/2" BORE 1 3/8" ROD

MODEL	ITEM	QTY	PART NO.	DESCRIPTION	NOTES
PMC-5408	1	1	020700166	PISTON ROD	
PMC-5412	1	1	020700168	PISTON ROD	
PMC-5414	1	1	020700169	PISTON ROD	
PMC-5416	1	1	020700170	PISTON ROD	
PMC-5420	1	1	020700172	PISTON ROD	
PMC-5424	1	1	020700174	PISTON ROD	
PMC-5430	1	1	020700178	PISTON ROD	
PMC-5432	1	1	020700179	PISTON ROD	
PMC-5436	1	1	020700180	PISTON ROD	
PMC-5442	1	1	020700181	PISTON ROD	
PMC-5408	2	1	061300043	BUTT & TUBE ASSEMBLY	
PMC-5412	2	1	061300045	BUTT & TUBE ASSEMBLY	
PMC-5414	2	1	061300084	BUTT & TUBE ASSEMBLY	
PMC-5416	2	1	061300046	BUTT & TUBE ASSEMBLY	
PMC-5420	2	1	061300048	BUTT & TUBE ASSEMBLY	
PMC-5424	2	1	061300049	BUTT & TUBE ASSEMBLY	
PMC-5430	2	1	061300050	BUTT & TUBE ASSEMBLY	
PMC-5432	2	1	061300051	BUTT & TUBE ASSEMBLY	
PMC-5436	2	1	061300052	BUTT & TUBE ASSEMBLY	
PMC-5442	2	1	061300053	BUTT & TUBE ASSEMBLY	
PMC-5400	3	1	071300016	PISTON	
PMC-5400	4	1	081300356	GLAND	
PMC-5400	5	1	220000208	LOCKNUT	
PMC-5400	6	1	270010020	GREASE ZERK	
PMC-5400	7	1	270010002	GREASE ZERK	
PMC-5400	8	1	240004004	PISTON RING	KIT
PMC-5400	9	2	240000330	O-RING	KIT
PMC-5400	10	2	240034330	LEATHER BU-WASHER	KIT
PMC-5400	11	1	240000018	O-RING	KIT
PMC-5400	12	1	240061330	BU-WASHER	KIT
PMC-5400	13	1	240037106	U-CUP	KIT
PMC-5400	14	1	250001220	WIPER	KIT
PMC-5400	15	1	230001250	SNAP RING	KIT
PMC-5400	*	1	240005220	BU-WASHER	KIT
PMC-5400	*	1	240010220	QUAD RING	KIT
PMC-5400			PMCK5400	PACKING KIT	

\* INCLUDED IN PACKING KIT AS REPLACEMENT SEALS FOR OLDER CYLINDERS

PRINCE MANUFACTURING CORPORATION • P.O. BOX 7000 • 612 NORTH DERBY LANE • NORTH SIOUX CITY, SD 57049-7000  
 PH: 605-235-1220 • OEM SALES FAX: 605-235-1082 • DISTRIBUTOR SALES FAX: 605-217-6300 • URL: www.princehyd.com