

Malabar

MODEL

832R

**aircraft
jack**

SERIAL NO. 203 1/2 UP

SERVICE MANUAL

WITH PARTS BREAKDOWN



MALABAR

INTERNATIONAL

220 W. Los Angeles Avenue
Post Office Box 367
Simi Valley, California 93062 U.S.A.
Phone: 805/581-0116
 Fax: 805/584-1624

**OPERATION AND SERVICE INSTRUCTIONS
MALABAR MODEL 832R AXLE JACK**

CAUTION: AIRCRAFT MANUFACTURER'S SPECIFICATIONS AND INSTRUCTIONS MUST BE FOLLOWED. IN THE EVENT OF CONTRADICTION BETWEEN AIRCRAFT MANUFACTURER'S SPECIFICATION AND MALABAR'S, AIRCRAFT MANUFACTURER'S SPECIFICATION WILL PREVAIL.

SPECIFICATIONS

Rated Capacity	35 Tons	31.8 M.T.
Low Height	7 Inches	178 mm
Hydraulic Lift (3 stages)	12 Inches	304.8 mm
Extension Screw	3 Inches	76.2 mm
Extended Height	22 Inches	558.8 mm
Oil Pressure at rated capacity	6770 PSI	476 kg/cm ²
Safety By-Pass Valve set at	38 Tons	34.5 M.T.
Hydraulic Fluid	MIL-H-5606	-
Reservoir Capacity	2 U.S. Gallons	7.6 Liters

GENERAL DESCRIPTION

The Malabar Hydraulic Axle Jack is designed primarily for use in aircraft landing gear maintenance. It consists of a multi-stage cylinder assembly attached to one end of a frame. The pump unit and oil reservoir are mounted on the other end. A high pressure hose, an oil return line and a release shaft assembly connects the cylinder assembly to the operating or front end of the jack. The unit is supported by two swivel casters under the oil reservoir and a spring loaded wheel inside the frame next to the cylinder assembly. The cylinder assembly is raised off the ground by the spring loaded wheel when not under a load. The wheel retracts and the base of the cylinder assembly rests on the ground when load is applied to the plungers. A tow bar is attached to the frame. The jack unit, therefore, may be towed about and easily positioned under the jacking pad.

PREPARATION FOR USE

1. The jack is shipped fully assembled except for the tow bar. As a safety and spillage precaution, the jack is shipped without hydraulic fluid. Before placing jack in use, remove oil filler cap on top of the reservoir and fill with MIL-H-5606 Hydraulic Fluid or approved alternate. The oil level should only be checked with the jack plungers in the lowered position.
2. Bleed air which may be trapped under the jack plungers and the hand pump by opening the jack release valve and operating the hand pumps a few strokes.

Malabar

OPERATION

1. Position Jack Cylinder, with extension screw raised, directly under jacking pad of the aircraft. Make sure that the jack base will rest on a hard level surface when load is applied.
2. To raise the load:
 - a. Close the release valve knob.
 - b. The jack is equipped with two pumps (Fig. 3). One with a 3/4 inch diameter pump plunger for rapid raising of jack plungers under low pressure and a 7/16 inch diameter pump plunger for high pressure operation. Place the pump handle over the end of the pump fulcrum and operate the pump. Do not raise jack plungers beyond the rated hydraulic lift or lift a load greater than the rated capacity. Avoid lifting with excessive side load on the jack.
3. To lower the load:
 - a. Open the release valve knob not more than one and one-half turns counter-clockwise. The speed of lowering is controlled by the amount the release valve is opened.

SERVICING

Servicing the jack consists mainly of the following:

1. When in use, the reservoir should be kept full with hydraulic fluid. Check with jack fully retracted.
2. Lubricate casters and wheel bearings.
3. Lubricate pump link pins and tow bar pivot.

INSPECTION

Prior to use of jack:

1. Check operation of hand pumps.
2. Check for excessive oil around pump plungers.
3. Check for oil leakage at valve block, reservoir, cylinder plungers and base.
4. Check hydraulic hose and return line connections for leaks. Tighten as required.
5. Check for loose nuts. Tighten as required.

REPAIR AND REPLACEMENT SCHEDULE:

1. No definite time schedule has been established for the overhaul of the jack or for the replacement of various moving parts. The usage of the jack and the amount of load raised each time materially affect the life of the working parts.
2. When necessary to disassemble jack:
 - a. Drain hydraulic fluid from reservoir thru plug at the bottom.
3. Each time the jack is disassembled, inspect for the following:
 - a. Interior walls of all plungers and cylinder for rust, pits, scratches and/or excessive wear.
 - b. Exterior of plungers for excessive rust and/or excessive wear.
 - c. Upper bearings for excessive rust and/or excessive wear of interior walls.
 - d. Packings, seals, gaskets for distortion, wear, deterioration or dirt.
 - e. Oil Screen located in the valve block for cleanliness.
 - f. Valves and valve seats in the hand pump base block for scratches, dents and proper seating of the ball.
 - g. All pivot pins for wear, cracks, pits or evidence of damage or pending damage.
 - h. All areas for excessive dirt, oil, dust and chips.
 - i. Check all threads for condition and cleanliness.
 - j. Hose for cuts and distortions.
 - k. Replace all defective parts.
 - l. Clean all metal parts with clean solvent and dry with compressed air.
4. Lubricate all threads. Use teflon tape carefully on all pipe threads. Remove excess tape - it can clog valves and orifices. If ball valves do not seat properly, they may be reseated by tapping the ball into the valve seat with a brass rod.

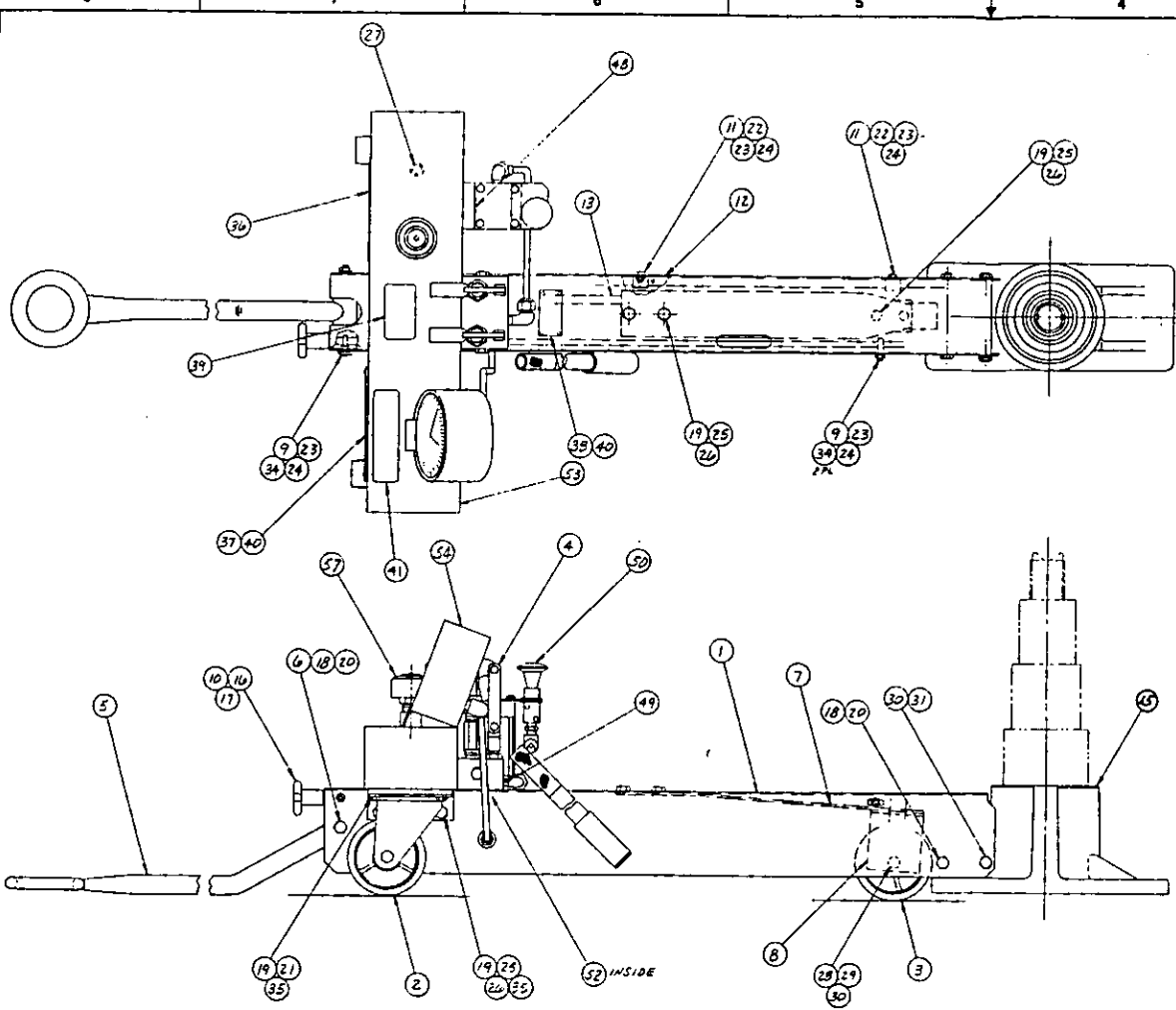
NOTE: The Safety by-pass valve, located in the pump block (Fig. 3), should not be removed unless absolutely necessary. This valve is set to by-pass oil back to the reservoir at 5% over rated capacity.

If the lead seal is removed from safety bypass valve plug be sure to reseal before placing into service. Rated capacity is 35 tons, Safety valve setting is 38 tons approx.

TESTING

Place the jack in a test fixture and load test with lower plunger fully extended and upper plunger partially extended. If the jack fails to operate properly, check for trouble as indicated in Trouble Shooting Chart. With plungers extended, and supporting the capacity load, allow the jack to stand for 10 minutes. Any excess settling indicates leakage in the pump, check valve, packing seals or gaskets. Check for oil leaks and replace defective parts.

DATE	BY	DESCRIPTION	DATE	APPROVED
	D	ECN 2910, REDRAWN	10-28-87	94
	E	ECN 3410 ADDED: ITEM 41	5-24-90	DLR/H
	F	ECN 3510, CHANGED TO MAIN STEERING	3-17-91	94/H
	G	SEE ECN 3725	3-23-92	WPT/JH
	H	ECN 3894, ADDED B3200R-E	11-20-91	WPT/JH

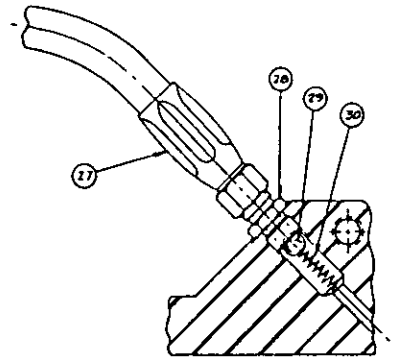
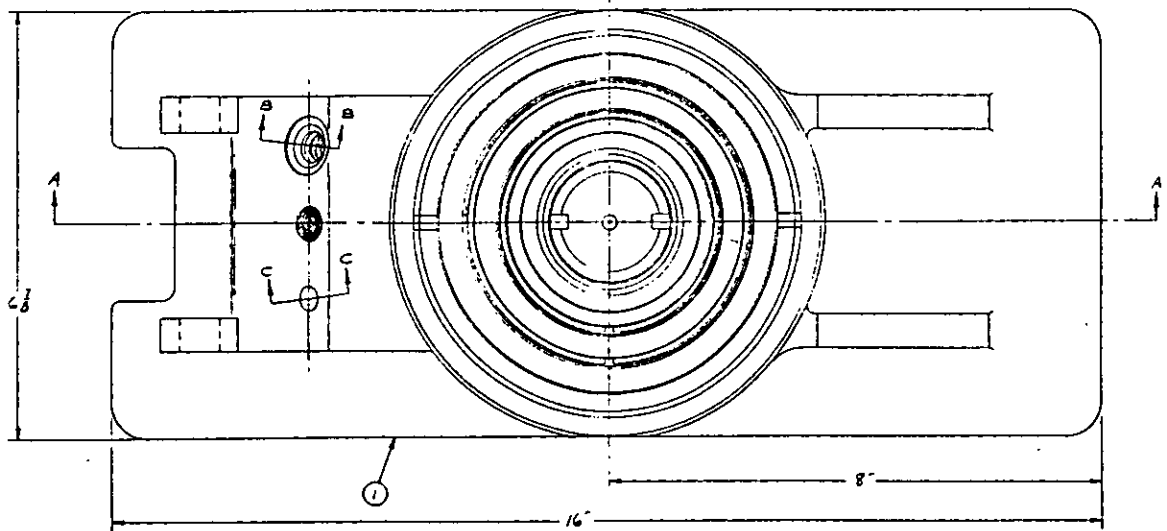


MODEL B32R REF

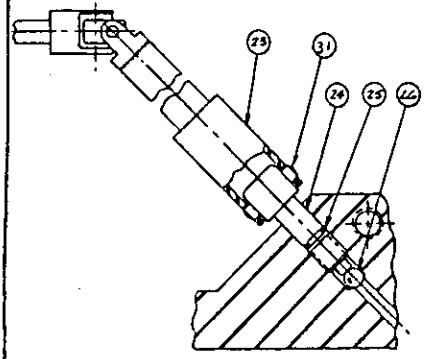
RATED CAPACITY _____ 35 TONS
 LOW HEIGHT _____ 7 INCHES
 HYDRAULIC LIFT _____ 12 INCHES
 SCREEN EXTENSION _____ 3 INCHES
 EXTENDED HEIGHT _____ 22 INCHES
 OIL PRESSURE AT RATED CAPACITY _____ 6770 P.S.I.
 SAFETY POP-OFF VALVE SET AT _____ 38 TONS
 TEST LOAD _____ 52.5 TONS
 RESERVOIR CAPACITY _____ 2 GAL

QTY	UNIT	DESCRIPTION	REMARKS
1	-	B3260	AIR OPER. VACUUM RETRACT KIT
1	1	B6339	BEARING 1 INSTEAD ASST
2	2	321-D42	NUTS, 3/8-16 x 3/4 LG
1	1	B3219	LOAD GAUGE KIT
1	1	B2210	ALUMINUM NEEDMENT
1	1	122-007	ELBOW, 45°
1	1	B0218	AIR PUMP KIT
1	1	717-055	PIPE NUG
1	1	717-006	PIPE NUG
1	1	75740	STICKER
8	8	397-008	SELF TAPPING SCREW
1	1	55994	DECAL, FLUID
1	1	55997-2	PLACARD, NAMEPLATE
1	1	55991-B	PLACARD, TONNAGE
1	1	55998	PLACARD, LOAD
12	12	302-003	FLAT WASHER 3/8
3	3	362-001	FLAT WASHER 1/4
2	2	321-012	HEX HD CAP SCR 1/2-10x1" LG
2	2	363-004	LOCKWASHER 1/4
1	1	351-003	HEX NUT 1/2-13
1	1	321-029	HEX HD CAP SCR 1/2-13x3" LG
1	1	317-007	PIPE NUG 3/8 MPF
1	1	317-002	HEX NUT 3/8-16
1	1	321-011	HEX HD CAP SCR 3/8-16x1" LG
1	1	351-001	HEX NUT 1/4-20
1	1	363-001	LOCKWASHER 1/4 MED
2	2	321-036	HEX HD CAP SCR 1/2-20x3 1/2 LG
1	1	321-042	HEX HD CAP SCR 3/8-16 x 3/4 LG
2	2	355-009	NUT THIN SELF LOC 5/8-11
10	10	363-005	LOCKWASHER 3/8
2	2	321-021	HEX HD CAP SCR 1/2-11x5 1/2 LG
1	1	331-011	SET SCREW 1/4-20 x 1/2 LG
1	1	B3596	SMART ASSY
1	1	B3298	CYLINDER ASSY
1	1	B3294-R	OIL RETURN LINE
1	1	B3295-R	NOSE ASSY
2	2	394-003	CLIP, PIPE
1	1	B3597	KNOB
2	2	B0206	SMART GUIDE
1	1	B0207	BRACKET, KNEEL
1	1	B0208	SPRING, LEAF
1	1	B0205	SPACER, TONBAR
1	1	B0204	TONBAR
1	1	B6399B	VALVE BLOCK AND HAND PUMP ASSY
1	1	B3565	WHEEL
2	2	B3282R	SWIVEL CASTER
1	1	B0215	FRAME WELDMENT

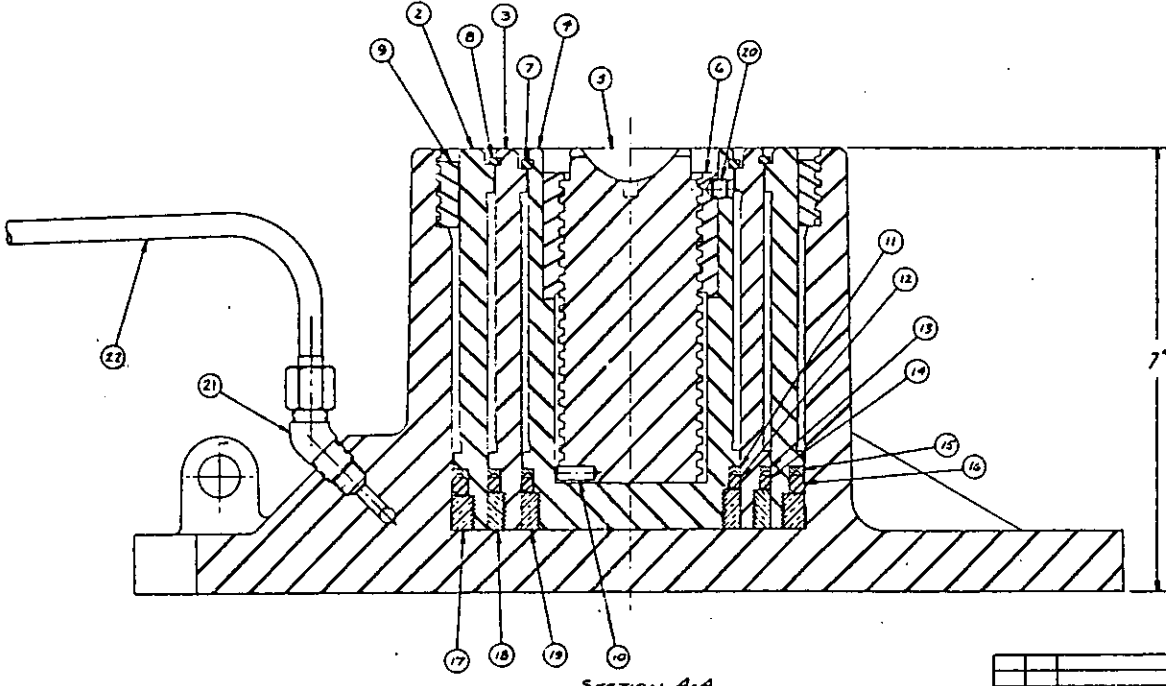
MATERIAL		CONTRACT NO.		MALABAR	
332R		APPROVALS		NO. VALLEY ENGINEERS	
DATE		DATE		MODEL B32R, 35 TON	
10-9-87		10-9-87		AXLE JACK	
10 N BT		SCALE 1/4"		PARTS LIST	
APPLICATION		DO NOT SCALE DRAWING		D 94861	
				B3200R H	



SECTION B-B



SECTION C-C



SECTION A-A

RATED CAPACITY 35 TONS
 LOW HEIGHT 7 IN.
 HYDRAULIC LIFT (3 STAGE) 12 IN.
 EXTENSION SCREW 3 IN.
 EXTENDED HEIGHT 22 IN.
 OIL PRESSURE AT RATED CAP. 6770 P.S.I.
 SAFETY BY-PASS VALVE SET AT 36 TONS

31	390-001	1	DRIVE PIN
30	#35/3	1	SPRING
29	412-001	1	3/8 DIA. BALL
28	B3514	1	FITTING
27	B3295-R	1	HOSE TO VALVE BLOCK (REF)
26	412-002	1	1/2 DIA. BALL
25	55925-011	1	O' RING
24	101	1	STEM
23	B359C	1	RELEASE VALVE SHUNT (REF)
22	B3294-R	1	RETURN LINE TO RES. (REF)

21	722-008	1	45° ELBOW
20	331-004	1	5/8" DIA X 1/2" DIA SET SCREW
19	B3217-R	1	INNER BEARING
18	B3225-R	1	CENTER BEARING
17	B3212-R	1	OUTER BEARING
16	55925-431	1	O' RING (55907-38)
15	55903-58	1	BACK-UP RING
14	55925-347	1	O' RING (55907-20)
13	55902-50	1	BACK-UP RING
12	55925-359	1	O' RING (55907-42)
11	55902-42	1	BACK-UP RING
10	377-014	1	ROLL PIN
9	B3217-R	1	STOP RING
8	B3234-R	1	LARGE SNAP RING
7	B3214-R	1	SMALL SNAP RING
6	B3209-R	1	EXTENSION SCREW NUT
5	B3208-R	1	EXTENSION SCREW
4	B3250-R	1	INNER PLUNGER
3	B3230-R	1	CENTER PLUNGER
2	B3210-R	1	OUTER PLUNGER
1	B3207-R	1	BASE/CYLINDER

REV	NO	DATE	DESCRIPTION	BY	CHKD	APP'D
A	1		REV. PREL. NOS.			
B	1		REV. PREL. NOS. ADDED ITEM 31			

REV	NO	DATE	DESCRIPTION	BY	CHKD	APP'D

REV	NO	DATE	DESCRIPTION	BY	CHKD	APP'D

HALABAR MFG. CO.
 CYLINDER ASSEMBLY 83298

REV NO	863998	REV	1
REVISION			
ZONE	REV	DESCRIPTION	DATE
		ECN 2909, NEW RELEASE	10-2-87
			APPROVED
			V.N.

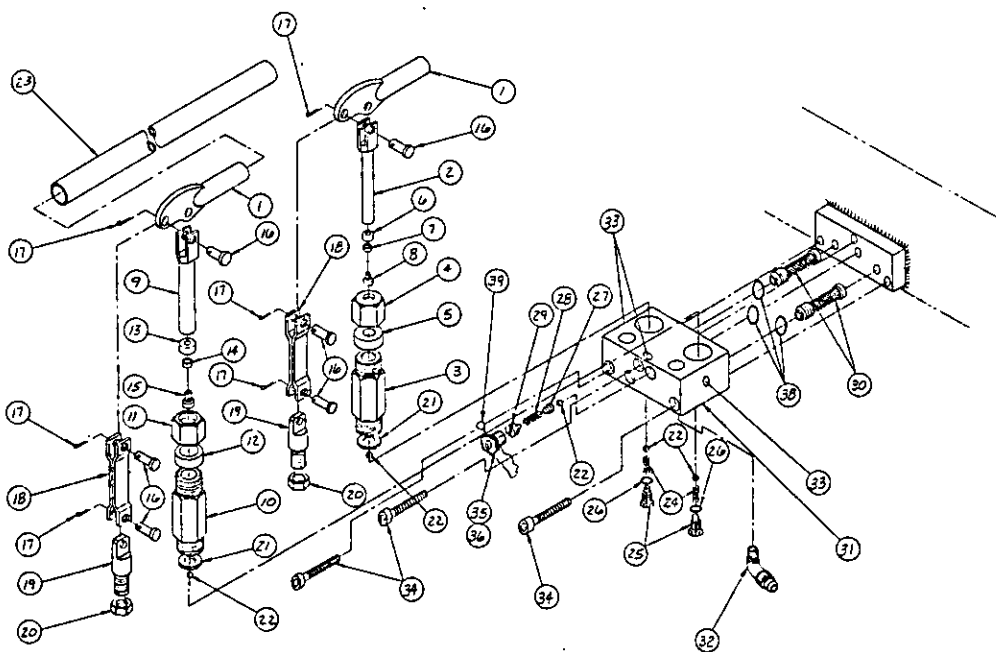
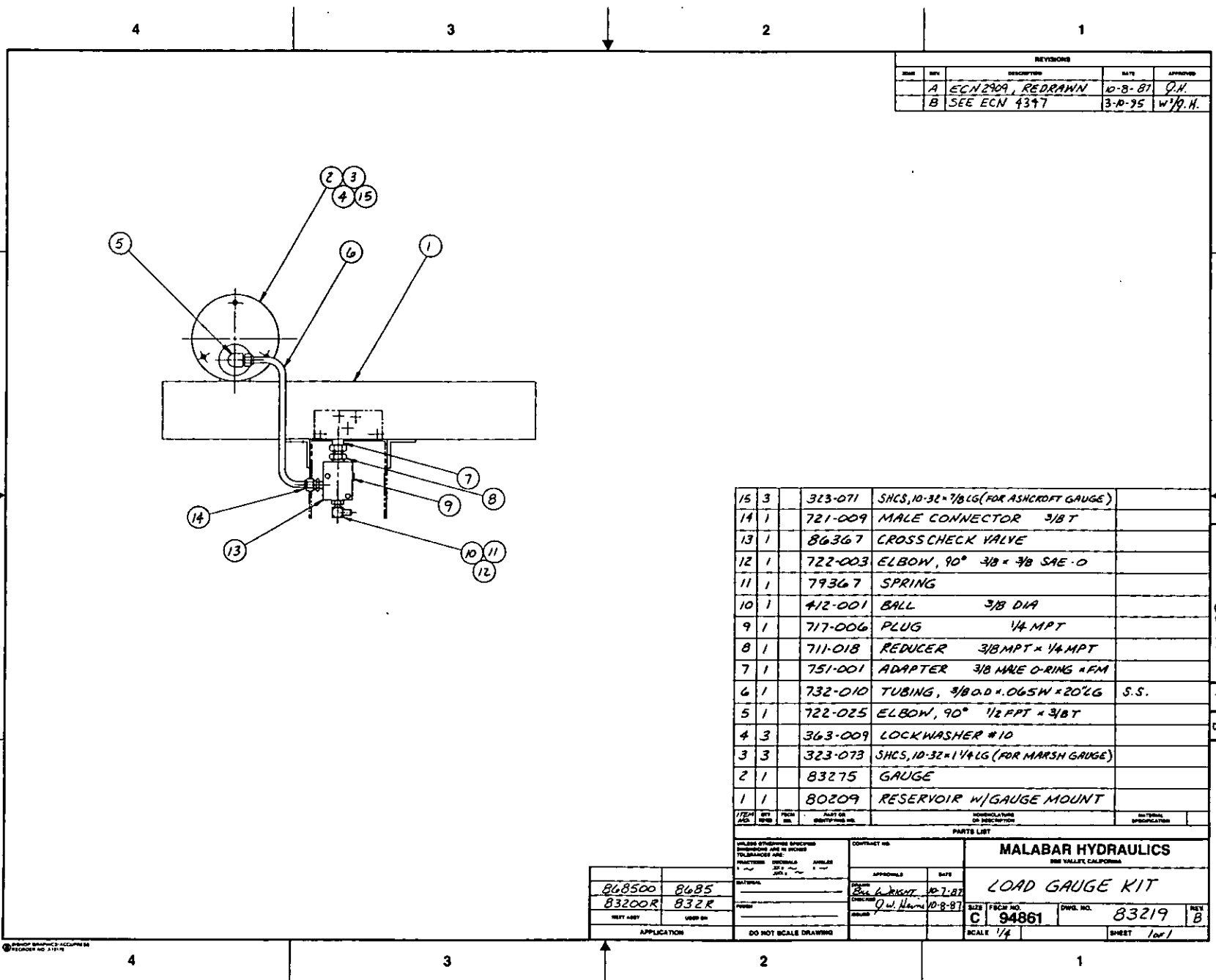


FIGURE 3.

QTY	PART NO	DESCRIPTION	UNIT
39	1	390-022	LEAD AND WIRE SEAL
38	3	55925-113	O-RING
37			
36	1	55925-904	O-RING
35	1	717-046	PLUG
34	3	323-009	SCREEN, SOC. HD CAP 3/8" DIA X 3" LG
33	3	717-D10	PLUG, HEX SOC 1/4" NPT
32	1	722-009	ELBOW, 45° 1/4" NPT - 3/8" FLARE
31	1	85425	VALVE BLOCK
30	2	55568	OIL SCREEN
29	1	55148	SET SCREW
28	1	55144H	SPRING
27	1	55153	GUIDE
26	2	55925-903	O-RING
25	2	55620	PLUG
24	2	55621	SPRING
23	1	86376	PUMP HANDLE
22	5	412-004	BALL 1/4" DIA
21	2	55024	GASKET
20	2	552-004	NUT, JAM 5/16"-18 UNF
19	2	55011	ANCHOR
18	2	55615	LINK
17	6	372-001	PIN, COTTER 3/32" X 3/4"
16	6	55002	PIN, FLAT HD
15	1	323-056	SCREEN 1/4" DIA X 1/2" LG
14	1	55049	CUP 3/4" DIA
13	1	55048	CUP 3/4" DIA
12	1	55044	PACKING 3/4" DIA
11	1	55045	GLAND 3/4" DIA
10	1	55046	BODY 3/4" DIA
9	1	55047	PLUNGER 3/4" DIA
8	1	323-055	SCREEN 8-32 X 1/2" LG
7	1	55033	CUP RETAINER 1/4" DIA
6	1	55031	CUP 7/16" DIA
5	1	55004	PACKING 7/16" DIA
4	1	55005	GLAND 7/16" DIA
3	1	55006	BODY 7/16" DIA
2	1	55007	PLUNGER 7/16" DIA
1	2	55001	FULCRUM

UNLESS OTHERWISE SPECIFIED DIMENSIONS ARE IN INCHES TOLERANCES ARE FRACTIONS DECIMALS MILLIMETERS		CONTRACT NO		MALABAR	
DRAWN BY		APPROVED		DATE	
CHECKED BY		DATE		VALVE BLOCK ASSEMBLY	
PART NO		REV		863998	
DATE		10-7-87		D 84861	
SCALE		1" = 1"		PAGE 6	



REVISIONS				
REV	DESCRIPTION	DATE	APPROVED	
A	ECN 2409, REDRAWN	10-8-87	J.H.	
B	SEE ECN 4347	3-10-75	W/J.H.	

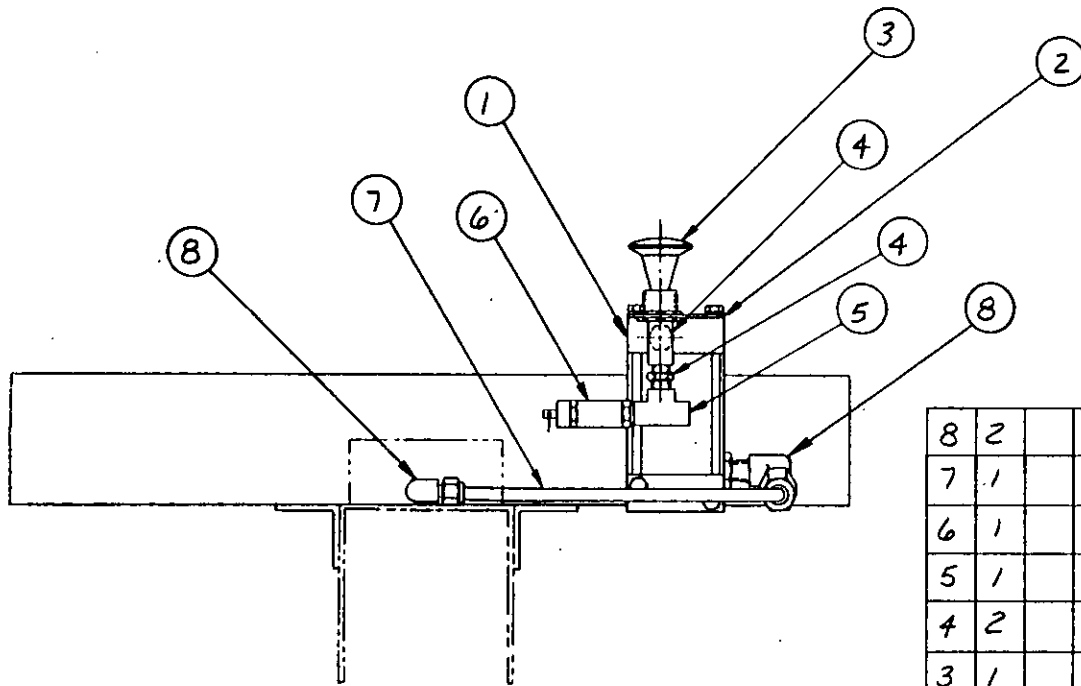
ITEM NO.	QTY	PART OR IDENTIFYING NO.	DESCRIPTION	QUANTITY
15	3	323-071	SHCS, 10-32 x 7/8 LG (FOR ASHCROFT GAUGE)	
14	1	721-009	MALE CONNECTOR 3/8 T	
13	1	86367	CROSS CHECK VALVE	
12	1	722-003	ELBOW, 90° 3/8 x 3/8 SAE O	
11	1	79367	SPRING	
10	1	412-001	BALL 3/8 DIA	
9	1	717-006	PLUG 1/4 MPT	
8	1	711-018	REDUCER 3/8 MPT x 1/4 MPT	
7	1	751-001	ADAPTER 3/8 MALE O-RING x FM	
6	1	732-010	TUBING, 3/8 O.D. x .065 W x 20 LG S.S.	
5	1	722-025	ELBOW, 90° 1/2 FPT x 3/8 T	
4	3	363-009	LOCK WASHER #10	
3	3	323-073	SHCS, 10-32 x 1 1/4 LG (FOR MARSH GAUGE)	
2	1	83275	GAUGE	
1	1	80209	RESERVOIR W/GAUGE MOUNT	

PART NO. 83219

MALABAR HYDRAULICS 888 VALLEY CALIFORNIA		CONTRACT NO.	
MALABAR HYDRAULICS SPECIFIED DIMENSIONS ARE IN INCHES UNLESS OTHERWISE SPECIFIED		APPROVALS	
PRACTICES: DECIMALS 2 PLACES FRACTIONS 1/16"		DATE 10-7-87	
DRAWN BY: B3200R B32R		CHECKED BY: J.W. HARRIS 10-8-87	
NEXT ASST:		SIZE: C 94861	
USED ON:		DWG. NO. 83219	
APPLICATION:		SCALE: 1/4"	
DO NOT SCALE DRAWING		SHEET 1 of 1	

DWG. NO. 80218 SH, REV. A

REVISIONS			
REV	DESCRIPTION	DATE	APPROVED
A	ECN 2909, REDRAWN	10-8-87	J.H.



8	2	722-014	ELBOW 3/8 T x 1/4 MPT		
7	1	732-010	TUBING, 3/8 O.D. x .065 W x 12" LG	S.S.	
6	1	425-001	AIR RELIEF VALVE		
5	1	713-013	TEE 1/4 NPT		
4	2	711-024	NIPPLE, REDUCING 1/4 x 1/8		
3	1	421-006	VALVE		
2	1	72585	PLATE, MOUNT		
1	1	441-018	AIR PUMP		
ITEM NO.	QTY REQD	FSCM NO	PART OR IDENTIFYING NO.	NOMENCLATURE OR DESCRIPTION	MATERIAL SPECIFICATION

PARTS LIST

UNLESS OTHERWISE SPECIFIED
DIMENSIONS ARE IN INCHES
TOLERANCES ARE:
FRACTIONS DECIMALS ANGLES
± ~ .XX ± ~ ± ~
XXX ± ~

CONTRACT NO.
APPROVALS
DATE
DRAWN *Bill Wright* 10-8-87
CHECKED *Q.W. Heim* 10-8-87
ISSUED

MALABAR HYDRAULICS
SDB VALLEY, CALIFORNIA

AIR PUMP KIT

SIZE	FSCM NO.	DWG. NO.	REV.
B	94861	80218	A
SCALE 1/4		SHEET / OF /	

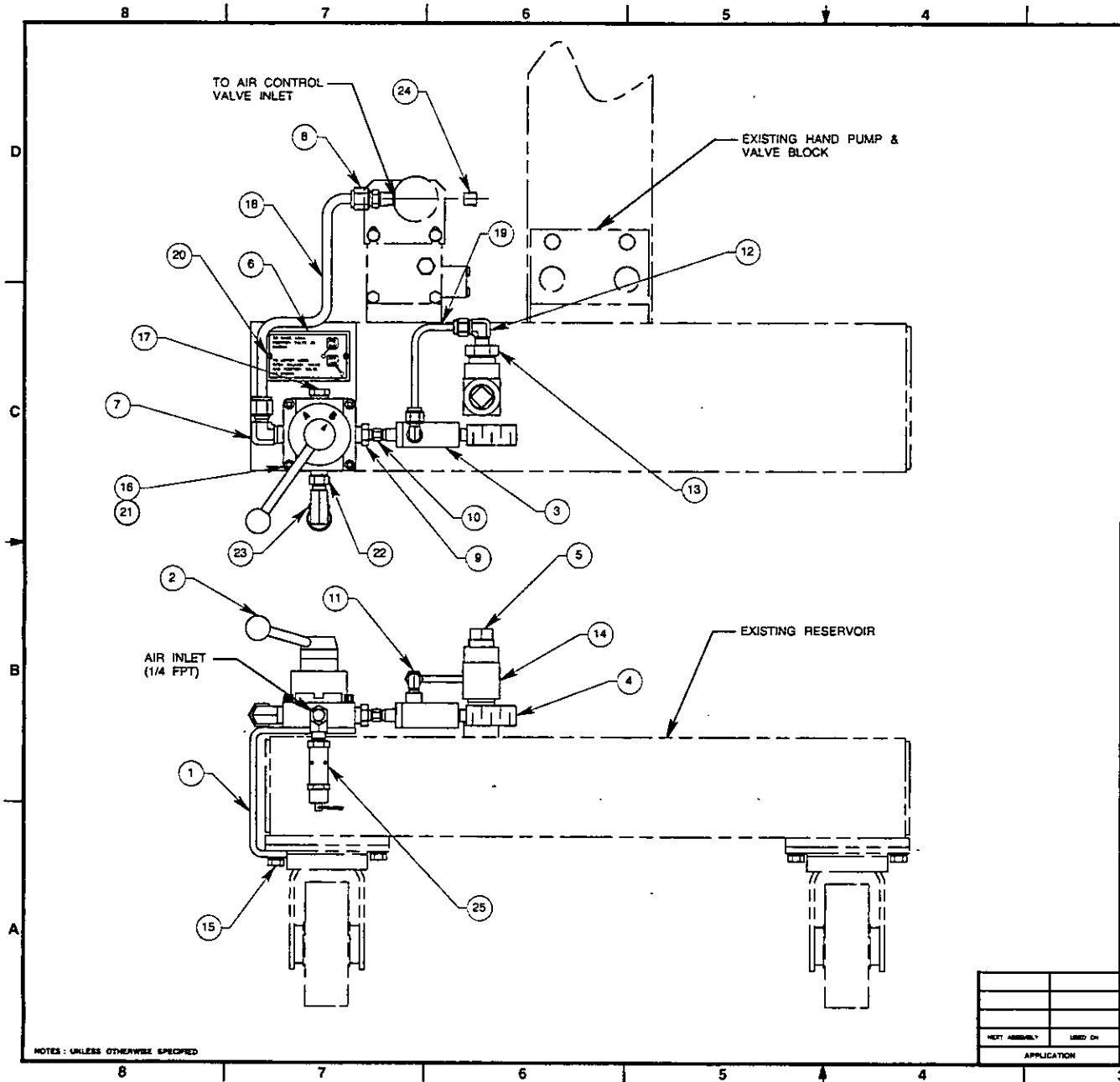
MATERIAL	
FINISH	
NEXT ASSY	USED ON
APPLICATION	

DO NOT SCALE DRAWING

TROUBLE SHOOTING CHART

TROUBLE	PROBABLE CAUSE	REMEDY
Jack will not raise.	Release valve open. (Oil passing back into reservoir.)	Close valve firmly.
	Intake valve open. (Oil passing back into reservoir.)	Pump rapidly to flush dirt off.
	Discharge valve open. (Oil passing back into pump chamber.)	Pump rapidly to flush dirt off.
	Sticking intake valve.	Remove pump from jack base. Un-screw valve block. Clean or replace valve.
	Clogged screen.	Remove and clean.
	Lack of oil. Air under plunger.	Refill. Check for leaks. Bleed air out by opening release valve. Pump rapidly a few times and close release valve.
Jack will not raise to full height.	Lack of oil.	Refill, check for leaks.
	Sticking intake valve.	Remove pump from jack base. Un-screw valve block. Clean or replace ball valves. Re-tighten or repair.
Jack will not raise capacity load.	High pressure leaks. (At pump or release valve.)	Reseat valve.
	Leaky release valve.	Reseat valve and clean valve block.
Jack raises and falls during each stroke	Leaky discharge valve.	Tighten or replace ball valve or packing.
Jack will not hold up load.	Leaky release valve.	Reseat valve.
	Defective "O" Ring and Back-Up Ring.	Remove plunger and replace "O" Ring and Back-Up Ring.
Jack will not lower the load.	Damaged release valve.	Remove and replace parts as needed.
	Bent plunger.	Replace.
Jack will not close completely.	Air under plunger.	Bleed air out. Open release valve and pump rapidly several times. Close valve.
Handle stroke only partly effective.	Air in pump chamber.	Open release valve and pump rapidly several times. Close valve.
	Sticking intake valve.	Remove pump and clean valve block.
	Clogged screen.	Remove and clean.
Handle raises without effort.	Leaky intake valve.	Remove pump and clean valve block.
Handle snaps back.	Sticking intake valve.	Open release valve. Pump rapidly several times. Close valve.
	Clogged screen.	Remove and clean.

DRW NO	83260	REV	1
DATE	10/30/92	BY	HL
APPROVED	BW		



REF	QTY	FROM NO	PART OR IDENTIFYING NO	MANUFACTURE OR DESCRIPTION	MATERIAL SPECIFICATION
25	1		425-001	AIR RELIEF VALVE, 1/4 MPT	
24	1		717-006	PLUG, 1/4 MPT	
23	1		713-013	TEE, BRASS, 1/4 FPT	
22	1		711-030	NIPPLE, BRASS, 3/8 MPT X 1/4 MPT	
21	4		383-014	SPLIT LOCKWASHER, HI-COLLAR, 1/4	
20	2		397-010	SELF TAPPING SCREW, #6-32 X 3/16 LG	
19	A/R		732-003	TUBE, 1/4 O. D. X .035 WALL X 8" LG	
18	A/R		732-002	TUBE, 3/8 O. D. X .049 WALL X 16" LG	
17	1		483-004	BREATHER, 3/8 MPT	
16	4		323-048	SHCS, 1/4-20 X 1 1/2 LG	
15	2		321-011	HMCS, 3/8-16 X 1" LG	
14	1		713-030	STREET TEE, 3/4 NPT	
13	1		714-007	REDUCER BUSHING, 3/4 MPT X 1/4 FPT	
12	1		722-021	ELBOW, 1/4" TUBE X 1/4 MPT	
11	1		722-011	ELBOW, 1/4 TUBE X 1/8 MPT	
10	1		711-089	NIPPLE, BRASS, 1/8 MPT	
9	1		714-016	REDUCER, BRASS, 3/8 MPT X 1/8 FPT	
8	1		721-009	CONNECTOR, 3/8 TUBE X 1/4 MPT	
7	1		722-010	ELBOW, 3/8 TUBE X 3/8 MPT	
6	1		86562	PLACARD, INSTRUCTION	
5	1		86564	DIPSTICK WELDMENT	
4	1		472-003	MUFFLER, 1/4 FPT	
3	1		490-021	AIR OPERATED VACUUM PUMP	
2	1		86563	HAND VALVE	
1	1		83261	MOUNTING PLATE	

UNLESS OTHERWISE SPECIFIED DIMENSIONS ARE IN INCHES TOLERANCES ARE: FRACTIONS DECIMALS ANGLES		CONTRACT NO		MALABAR INTERNATIONAL BIRMINGHAM, CALIFORNIA	
1/32 .001 .01		APPROVAL		DATE	
SEE PARTS LIST		DESIGN H. LAM		10/92	
		CHECKED BILL W.		10/92	
NEXT ASSEMBLY USED ON		SCALE		SIZE FROM INCH DWG NO. 83260	
APPLICATION		DO NOT SCALE DRAWING		SCALE 1/2 SHEET 1 OF 1	

NOTES: UNLESS OTHERWISE SPECIFIED