

# **MALABAR**

**INTERNATIONAL**

***AIRCRAFT MAINTENANCE & SUPPORT EQUIPMENT***

***OWNER'S MANUAL FOR MALABAR MODEL***

## **PF53361-99P**

***2 GALLON FLUID DISPENSER***

***READ  
AND  
SAVE***

**THIS  
INSTRUCTION  
MANUAL**

- \* GENERAL DESCRIPTION
- \* OPERATION
- \* SERVICE
- \* PARTS BREAKDOWN

For Service & Spare  
Parts, Please Contact:

Malabar International  
220 W. Los Angeles Avenue  
Simi Valley, California 93065  
Phone: (805) 581-0116  
Fax: (805) 584-1624  
E-mail: [sales@malabar.com](mailto:sales@malabar.com)  
Web site: <http://www.malabar.com>

***OVER 65 YEARS OF SERVICE & EXPERIENCE***

## GENERAL DESCRIPTION, OPERATION, SERVICE AND PARTS BREAKDOWN

### ***MALABAR MODEL PF53361-99P 2 GALLON FLUID DISPENSER***

**CAUTION:** AIRCRAFT MANUFACTURER'S SPECIFICATIONS AND INSTRUCTIONS MUST BE FOLLOWED. IN THE EVENT OF CONTRADICTION BETWEEN AIRCRAFT MANUFACTURER'S SPECIFICATIONS AND MALABAR'S, AIRCRAFT MANUFACTURER'S WILL PREVAIL.

#### **SPECIFICATIONS:**

Fluid -----	TURBO OIL 2380	
Reservoir capacity -----	2 U.S. gal	7.6 liters
Pump outlet pressure -----	100 psig	689 kPa
Volume per stroke-----	2.5 cubic in	41 cc
Hose length -----	120 in	3048 mm
Net weight (empty)-----	12 lbs	5.4 kg
Filter rating -----	3 micron nominal	
Fluid tank color-----	yellow	

#### **GENERAL DESCRIPTION:**

The Malabar Model PF53361-99P is a 2 gallon fluid dispenser used to service various commercial aircraft. The hand pump dispenser consists of a reservoir, pump assembly, filter assembly, desiccant dryer, pressure gauge, fluid meter, gravity fill adapter, and a fluid delivery hose with a coupling.

#### **PREPARATION FOR USE:**

The unit is shipped fully assembled. Fill reservoir at fillport with approved fluid. Operate hand pump assembly a few strokes to bleed all air out of the system. The unit is now ready for use.

## **OPERATION:**

1. Remove the dust plug from the hose coupling and connect the hose coupling to the aircraft service point or connect the coupling to the gravity fill adapter assembly.
2. Use full steady pumping strokes when operating pump assembly during replenishing.
3. Disconnect the hose coupling or gravity fill adapter assembly from the aircraft service point, replace the dust plug and store the unit in a dry, dust free location.

## **ILLUSTRATED PARTS LIST:**

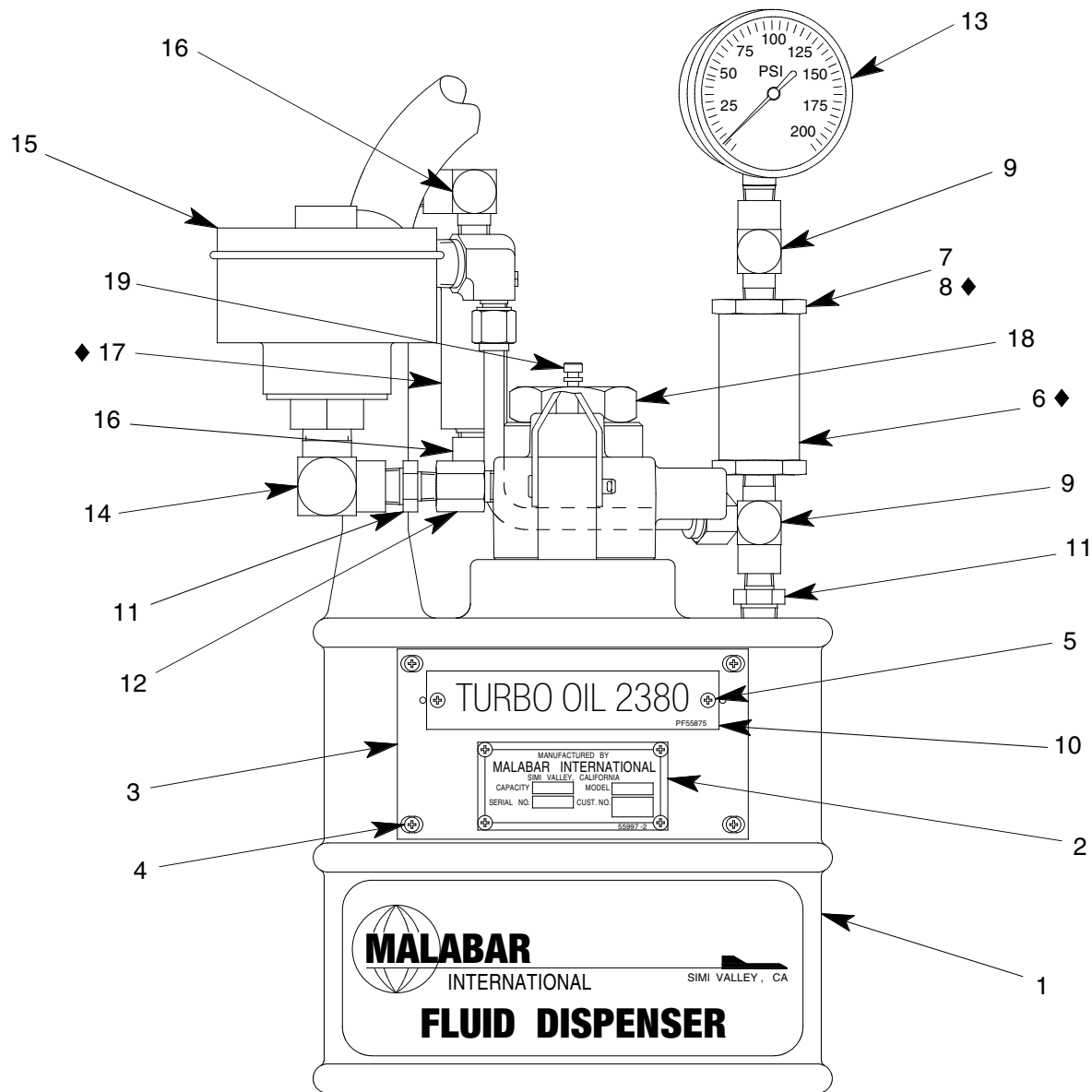
Refer to figure 1A & 1B for unit assembly (see sheets 3 & 4) or figure 2 for pump assembly (see sheet 5).

## **SERVICING:**

1. The frequency of filter change depends on operating conditions. Generally, changes should be made every 3-4 months or sooner if more than normal resistance is felt on the pumping stroke at low pressure. Refer to item 6 in figure 1A (see sheet 3) to change element.

## **REPAIR AND REPLACEMENT:**

No definite time schedule can be established for the overhaul of the pump assembly for the replacement of the various moving parts. The number of times the pump assembly is operated materially affect the life of the working parts. The moving piston seal (item 4) and rod seal (item 14) are normally the first to wear (see sheet 5). This is usually indicated by leakage of fluid past the piston or rod. It is advisable to change piston seal (item 4), rod seal (item 14) and gasket (item 13) immediately if leakage is discovered. A repair parts kit (P/N PF2-75PK) is available and recommended to keep on hand at your facility. Refer to sheet 6 for the complete list of parts contained in the repair parts kit.

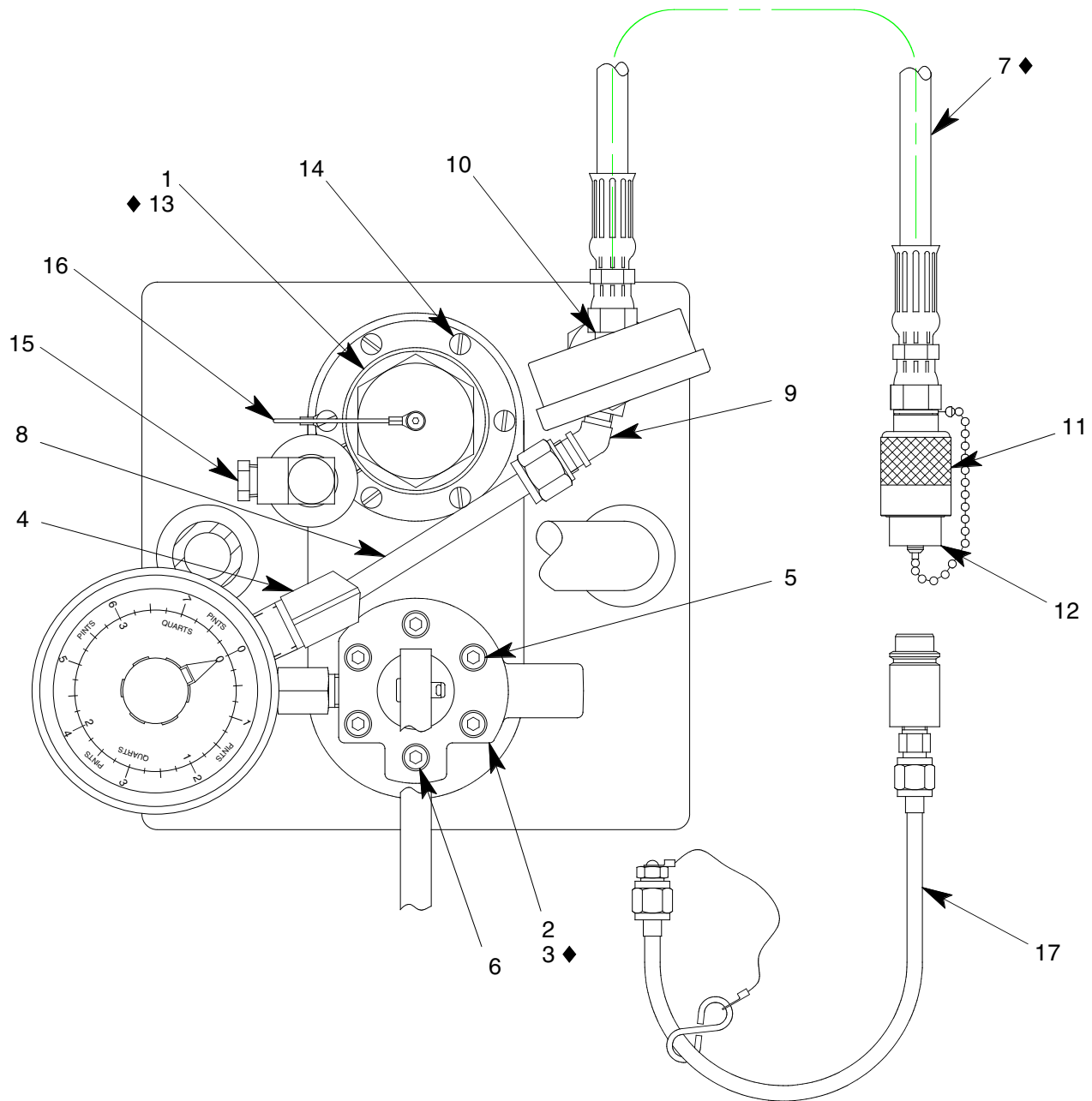


◆ PART OF REPAIR PARTS KIT

FIGURE 1A

**PF53361-99P UNIT ASSEMBLY**

NO.	QTY	PART NO.	PART NAME	NO.	QTY	PART NO.	PART NAME
1	1	PF55838-7	FLUID TANK	11	2	711-018	NIPPLE, 3/8 NPT x 1/4 NPT
2	1	55997-2	NAMEPLATE	12	1	714-017	BUSHING, 1/4 NPT
3	1	PF55859	PLACARD PLATE	13	1	482-050	GAUGE, 0-200 PSIG
4	4	344-011	FHCS, 6-32 x 7/16 LG	14	1	712-032	ELBOW, 1/2 NPT x 3/8 NPT
5	6	397-010	SELF TAPPING SCREW, 6-32	15	1	486-024	FLUID METER
6	1	481-005	FILTER ELEMENT	16	2	712-008	ELBOW, STREET, 1/4 NPT
7	1	PF71272	FILTER ASSEMBLY	17	1	483-013	DESICCANT DRYER
8	1	55925-120	O-RING	18	1	PF56073	FILL CAP
9	2	713-048	TEE, RUN, 1/4 NPT	19	1	330-016	SHSS, 3/16 DIA x 1/4 LG 8-32
10	1	PF55875	PLACARD				



◆ PART OF REPAIR PARTS KIT

FIGURE 1B

**PF53361-99P UNIT ASSEMBLY**

NO.	QTY	PART NO.	PART NAME	NO.	QTY	PART NO.	PART NAME
1	1	PF56136	RISER	10	1	721-004	CONN, 3/8 37° x 1/4 NPT
2	1	PF53415A-1	PUMP ASSEMBLY	11	1	736-013	COUPLING
3	1	PF55672	GASKET	12	1	PF55987	DUST PLUG & CHAIN
4	1	722-015	ELBOW, 3/8 TUBE x 1/2 NPT	13	1	483-016	GASKET, FLANGE
5	5	323-038	SHCS, 1/4-28 x 1 3/4 LG	14	6	341-009	RHCS, 10-32 x 1/2 LG
6	1	323-063	SHCS, 1/4-28 x 1" LG	15	1	483-005	BREATHER, 1/4 MPT
7	1	PF55456	HOSE ASSEMBLY	16	1	370-049	LANYARD, 6" LG
8	1	732-010	TUBING, 3/8 OD x .065 WALL	17	1	PF55759	GRAVITY FILL ADPTR ASSY
9	1	722-022	ELBOW, 45°, 3/8 T x 1/4 NPT				

◆ PART OF REPAIR PARTS KIT

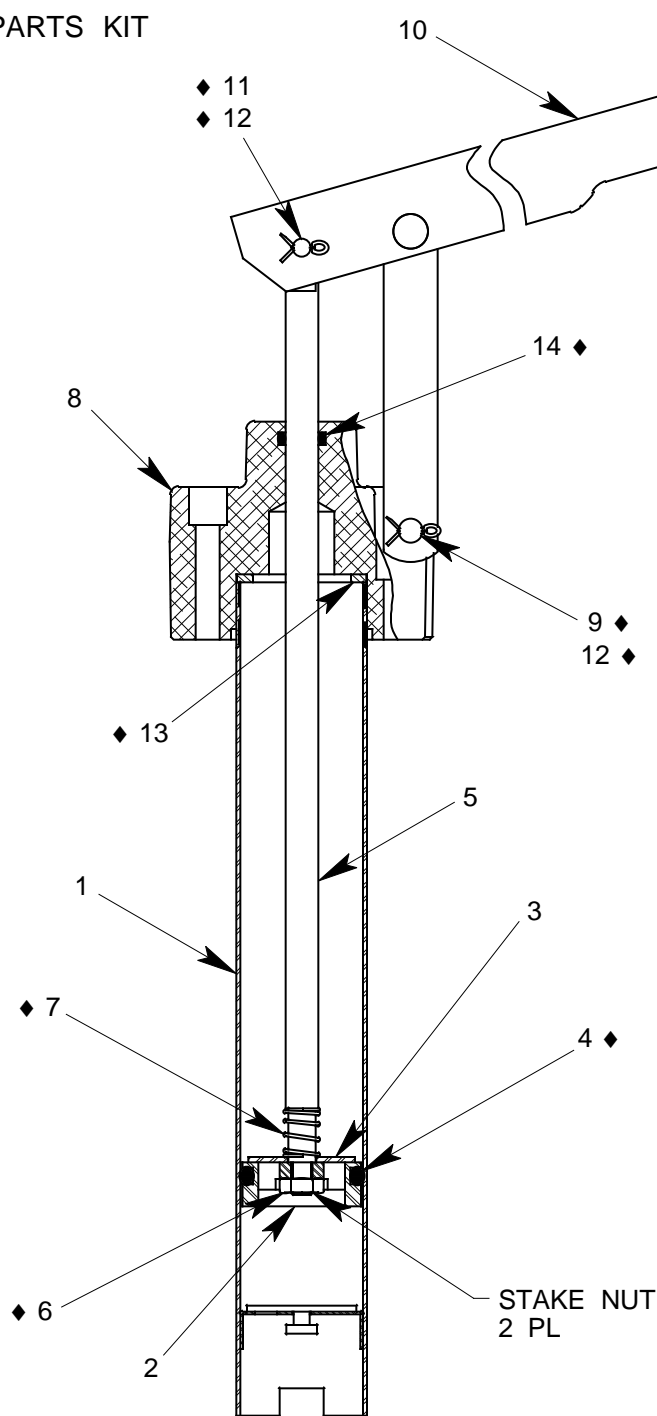


FIGURE 2

**PF53415A-1 PUMP ASSEMBLY**

NO.	QTY	PART NO.	PART NAME	NO.	QTY	PART NO.	PART NAME
1	1	PF53376	TUBE ASSEMBLY	8	1	PF55685	PUMP OUTLET
2	1	PF53379	PISTON	9	1	373-006	FH PIN, 1/4 DIA x 1 9/32 LG
3	1	PF53380	PISTON CHECK DISC	10	1	494-017	HANDLE ASSEMBLY
4	1	55925-216	O-RING	11	1	AN393-17	FH PIN, 3/16 DIA x 17/32 LG
5	1	PF53378	PUMP PISTON ROD	12	2	372-011	COTTER PIN, 1/16 x 1/2 LG
6	1	352-011	HEX JAM NUT, 1/4-28	13	1	PF54063	GASKET
7	1	PF53406	SPRING	14	1	55925-110	O-RING

**PF2-75PK REPAIR PARTS KIT**

QTY	PART NO.	PART NAME
1	PF55456	HOSE ASSEMBLY
1	481-005	FILTER ELEMENT
1	55925-120	O-RING
1	PF55672	GASKET
1	PF53406	SPRING
1	AN393-17	FLAT HEAD PIN, 3/16 DIA x 17/32 LG
1	352-011	HEX JAM NUT, 1/4-28
2	372-011	COTTER PIN, 1/16 DIA x 1/2 LG
1	373-006	FLAT HEAD PIN, 1/4 DIA x 1 9/32 LG
1	55925-216	O-RING
1	55925-110	O-RING
1	PF54063	GASKET
1	483-016	GASKET, FLANGE
1	483-013	DESICCANT DRYER
1	PF2-75PKDOC	REPAIR PARTS KIT LIST